

## 2015 TABLES & FIGURES

Table 14. Average quality ratings for *Dianella caerulea* ‘King Alfred’ in 2015 on 4 ET<sub>0</sub>-based irrigation levels.

	Apr-15	May-15	Jun-15	Jul-15	Aug-15	Sep-15	Oct-15	
<b>Foliage</b>								
80%	4.2	4.0	3.8	3.3	3.8	3.6	3.5	3.8
60%	4.0	4.0	3.9	4.1	3.8	3.7	3.5	3.9
40%	4.3	4.1	3.6	2.8	2.8	3.2	3.0	3.4
20%	4.0	4.0	3.8	3.3	3.5	3.3	3.7	3.7
<b>Flowering</b>								
80%	1.2	0.7	1.4	1.0	1.0	1.0	1.0	1.0
60%	1.4	1.0	1.7	1.0		1.0	1.0	1.2
40%	1.3	1.2	1.3	1.0		1.0		1.1
20%	1.2	1.0	1.3	1.0		1.0	1.0	1.1
<b>Pest Tolerance</b>								
80%	5.0	5.0	5.0	4.0	5.0	4.0	3.8	4.5
60%	5.0	5.0	5.0	4.7	4.5	4.3	4.3	4.7
40%	5.0	5.0	4.5	3.4	5.0	3.6	3.2	4.2
20%	5.0	5.0	4.8	4.2	5.0	4.0	4.0	4.6
<b>Disease Resistance</b>								
80%	5.0	5.0	5.0	5.0	4.7	5.0	4.5	4.9
60%	5.0	5.0	5.0	5.0	5.0	5.0	5.0	5.0
40%	5.0	5.0	5.0	5.0	5.0	5.0	5.0	5.0
20%	5.0	5.0	5.0	5.0	4.5	5.0	5.0	4.9
<b>Vigor</b>								
80%	4.4	4.1	4.3	3.8	4.0	4.8	4.3	4.3
60%	4.5	4.3	4.4	4.1	4.2	4.2	4.3	4.3
40%	4.8	3.8	4.4	3.8	3.6	3.6	4.0	4.0
20%	4.7	4.3	4.5	3.8	4.2	4.5	4.3	4.3
<b>Overall Appearance</b>								
80%	4.6	4.1	4.2	3.3	3.5	3.3	3.4	3.8 <sup>ab</sup>
60%	4.5	4.0	4.3	3.8	3.6	3.9	4.2	<b>4.0</b> <sup>a</sup>
40%	4.5	4.0	3.7	3.2	2.8	3.2	2.9	3.5 <sup>b</sup>
20%	4.8	4.4	4.2	3.3	3.3	3.8	3.3	3.9 <sup>ab</sup>

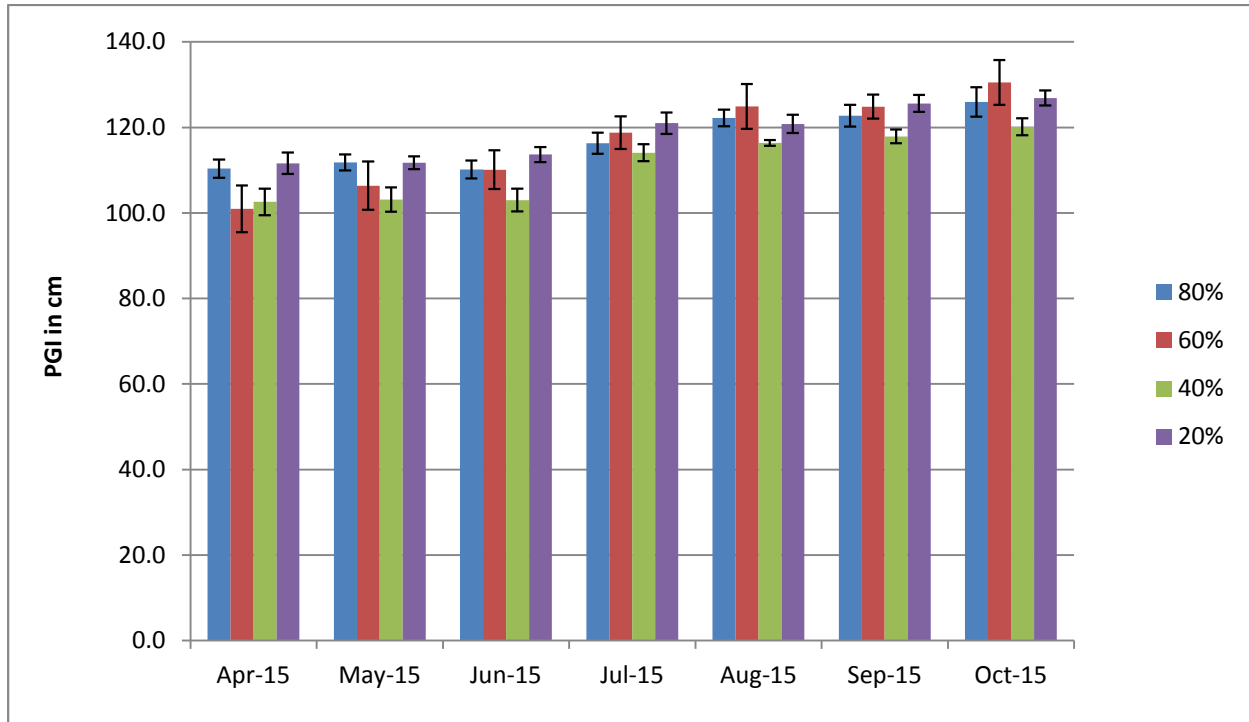


Figure 22a. Average monthly plant growth index for *Dianella caerulea* ‘King Alfred’ in 2015 on 4 ET<sub>0</sub>-based irrigation levels. Bars represent ±1 SE. No significant differences using ANOVA and Tukey’s HSD.

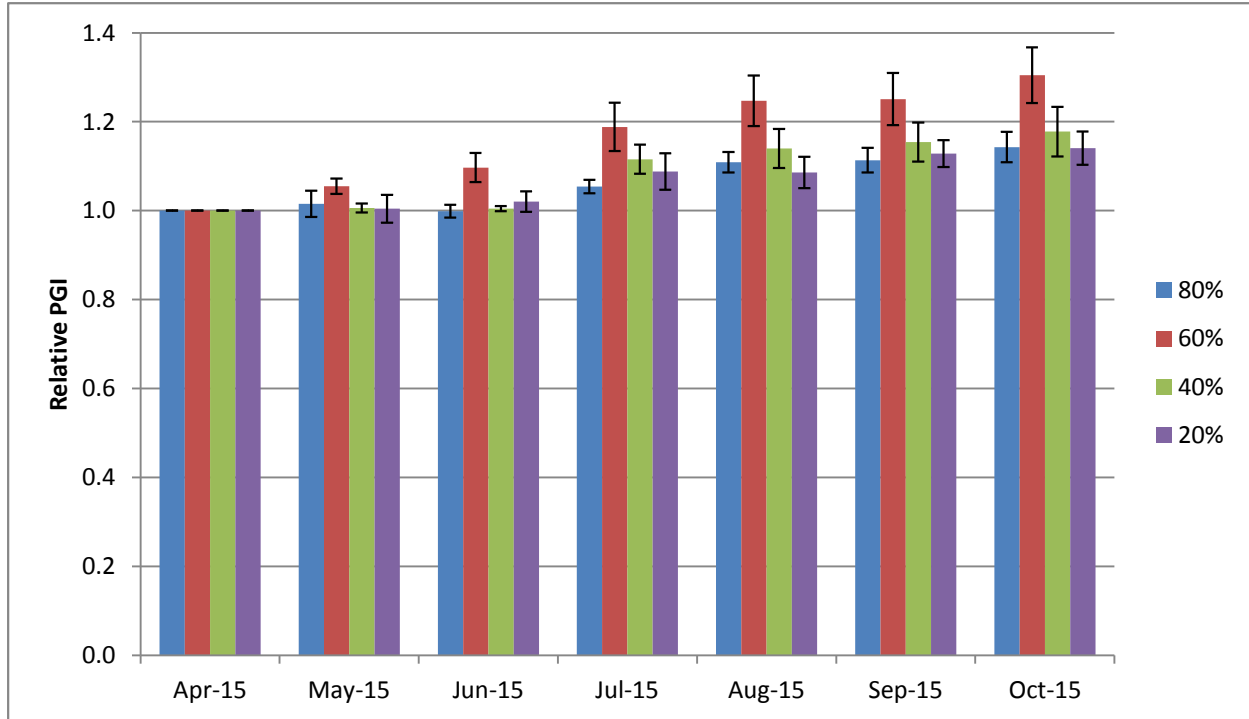


Figure 22b. Average monthly relative plant growth index for *Dianella caerulea* ‘King Alfred’ in 2015 on 4 ET<sub>0</sub>-based irrigation levels. Bars represent ±1 SE. No significant differences using ANOVA and Tukey’s HSD.