

2015 TABLES & FIGURES

Table 15. Average monthly quality ratings for *Lomandra* ‘Lomlon’ in 2015 on 4 ET₀-based irrigation levels.

	Apr-15	May-15	Jun-15	Jul-15	Aug-15	Sep-15	Oct-15	AVG
Foliage								
80%	4.1	4.1	4.0	4.2	4.0	4.0	4.0	4.0
60%	4.2	4.0	4.0	4.0	4.0	4.3	4.0	4.1
40%	4.1	4.0	4.0	4.3	4.2	4.0	4.0	4.1
20%	4.3	4.0	4.2	4.2	4.3	4.3	4.2	4.2
Flowering								
80%	1.5	1.0	1.0	1.0	1.0	1.0	1.0	1.1
60%	1.5	1.0	1.0	2.0	1.0	1.0	1.0	1.2
40%	1.4	1.3	1.0	1.0		1.0	1.0	1.1
20%	1.5	1.3	1.0	1.7	1.0	1.0	1.0	1.2
Pest Tolerance								
80%	5.0	5.0	5.0	5.0	4.5	5.0	5.0	4.9
60%	5.0	5.0	5.0	5.0	5.0	5.0	5.0	5.0
40%	5.0	5.0	5.0	5.0	5.0	5.0	5.0	5.0
20%	5.0	5.0	5.0	5.0	5.0	5.0	5.0	5.0
Disease Resistance								
80%	5.0	5.0	5.0	5.0	5.0	5.0	5.0	5.0
60%	5.0	5.0	5.0	5.0	4.9	5.0	5.0	5.0
40%	5.0	5.0	5.0	5.0	5.0	5.0	5.0	5.0
20%	5.0	5.0	5.0	5.0	5.0	5.0	5.0	5.0
Vigor								
80%	4.3	4.0	4.6	4.2	4.6	4.6	4.2	4.3
60%	4.1	4.0	4.2	4.3	4.2	4.3	4.5	4.2
40%	4.4	4.0	4.6	4.5	4.3	4.6	4.5	4.4
20%	4.5	4.2	4.7	4.7	4.3	4.5	4.5	4.5
Overall Appearance								
80%	4.4	4.2	4.8	4.2	4.3	4.8	4.3	4.4
60%	4.5	4.2	4.3	4.1	4.2	4.0	4.6	4.3
40%	4.3	4.3	4.4	4.0	4.2	4.7	4.7	4.4
20%	4.7	4.5	4.8	4.4	4.3	4.4	4.7	4.5

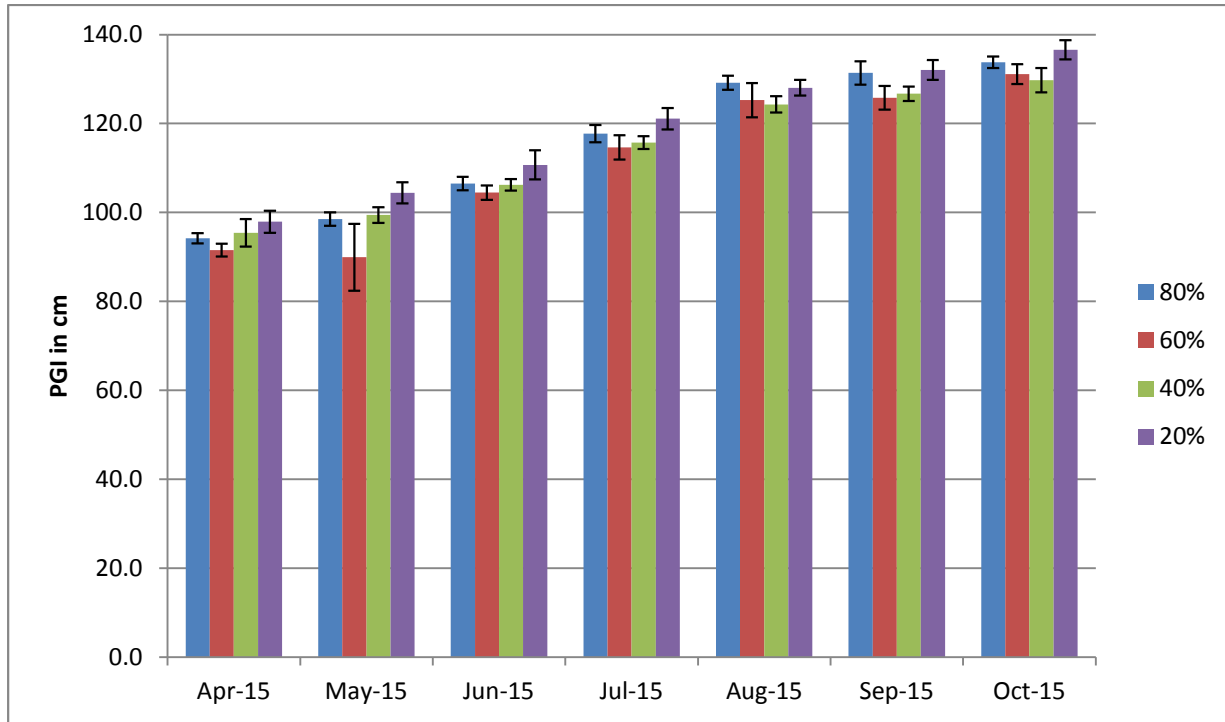


Figure 23a. Average monthly plant growth index for *Lomandra* ‘Lomlon’ in 2015 on 4 ET_0 -based irrigation levels. Bars represent ± 1 SE. No significant differences using ANOVA and Tukey’s HSD.

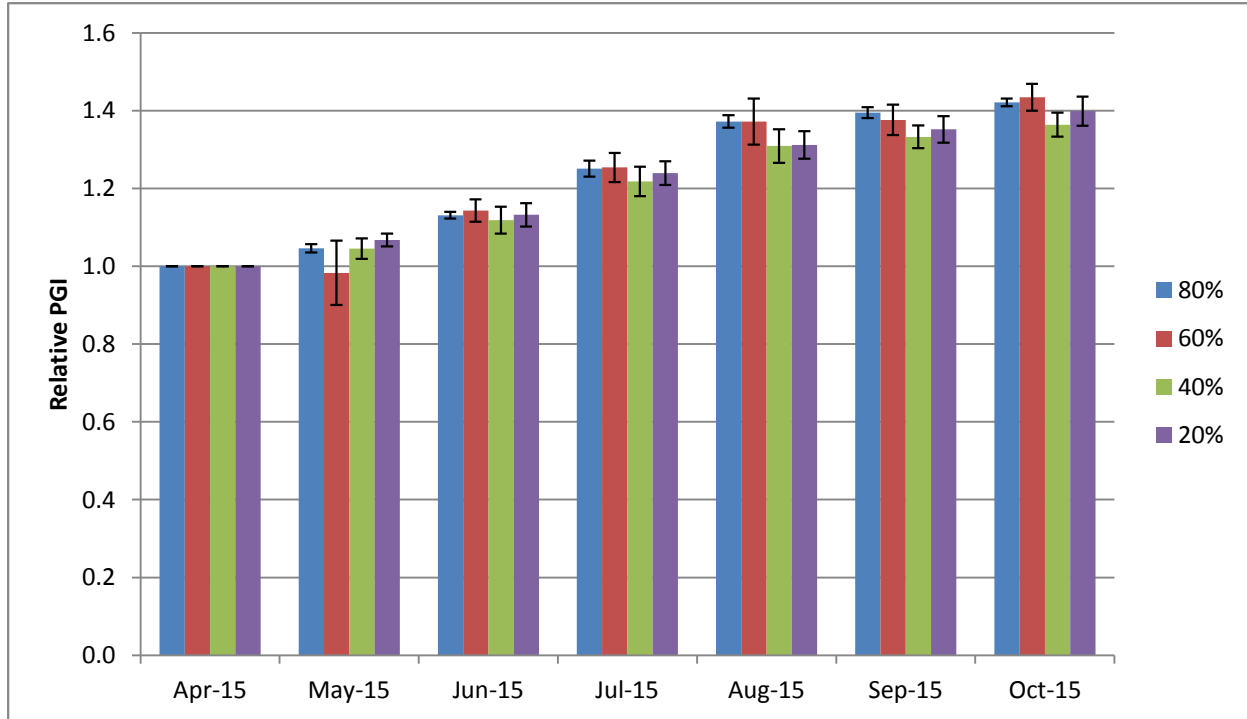


Figure 23b. Average monthly relative plant growth index for *Lomandra* ‘Lomlon’ in 2015 on 4 ET_0 -based irrigation levels. Bars represent ± 1 SE. No significant differences using ANOVA and Tukey’s HSD.