

2015 TABLES & FIGURES

Table 16. Average monthly quality ratings for *Ribes viburnifolium* ‘Spooner’s Mesa’ in 2015 on 4 ET₀-based irrigation treatments.

	Apr-15	May-15	Jun-15	Jul-15	Aug-15	Sep-15	Oct-15	AVG
Foliage								
80%	4.9	5.0	5.0	5.0	5.0	4.3	4.5	4.8
60%	4.9	5.0	5.0	4.8	5.0	4.8	5.0	4.9
40%	5.0	4.8	4.8	4.8	5.0	5.0	4.8	4.9
20%	4.8	4.9	4.9	5.0	5.0	5.0	5.0	5.0
Pest Tolerance								
80%	5.0	5.0	5.0	5.0	5.0	4.5	5.0	4.9
60%	5.0	5.0	4.7	5.0	5.0	5.0	5.0	5.0
40%	5.0	5.0	5.0	5.0	5.0	5.0	5.0	5.0
20%	5.0	5.0	5.0	5.0	5.0	5.0	4.8	5.0
Disease Resistance								
80%	5.0	5.0	5.0	5.0	5.0	5.0	5.0	5.0
60%	5.0	5.0	5.0	5.0	5.0	5.0	5.0	5.0
40%	5.0	5.0	5.0	5.0	5.0	5.0	5.0	5.0
20%	5.0	5.0	5.0	5.0	5.0	5.0	5.0	5.0
Vigor								
80%	4.3	4.3	4.5	4.5	4.2	4.3	4.7	4.4
60%	4.3	4.4	4.4	4.6	4.3	4.5	4.8	4.5
40%	4.7	4.4	4.5	4.6	4.7	4.2	5.0	4.6
20%	4.3	3.8	4.7	4.5	4.3	4.3	4.0	4.3
Overall Appearance								
80%	4.3	4.2	4.0	3.7	3.5	3.7	4.4	4.0
60%	4.3	4.3	4.2	4.3	3.7	4.4	4.5	4.2
40%	4.3	4.0	4.2	4.0	3.8	4.0	4.2	4.1
20%	4.6	4.2	4.3	4.0	4.2	4.0	4.0	4.2

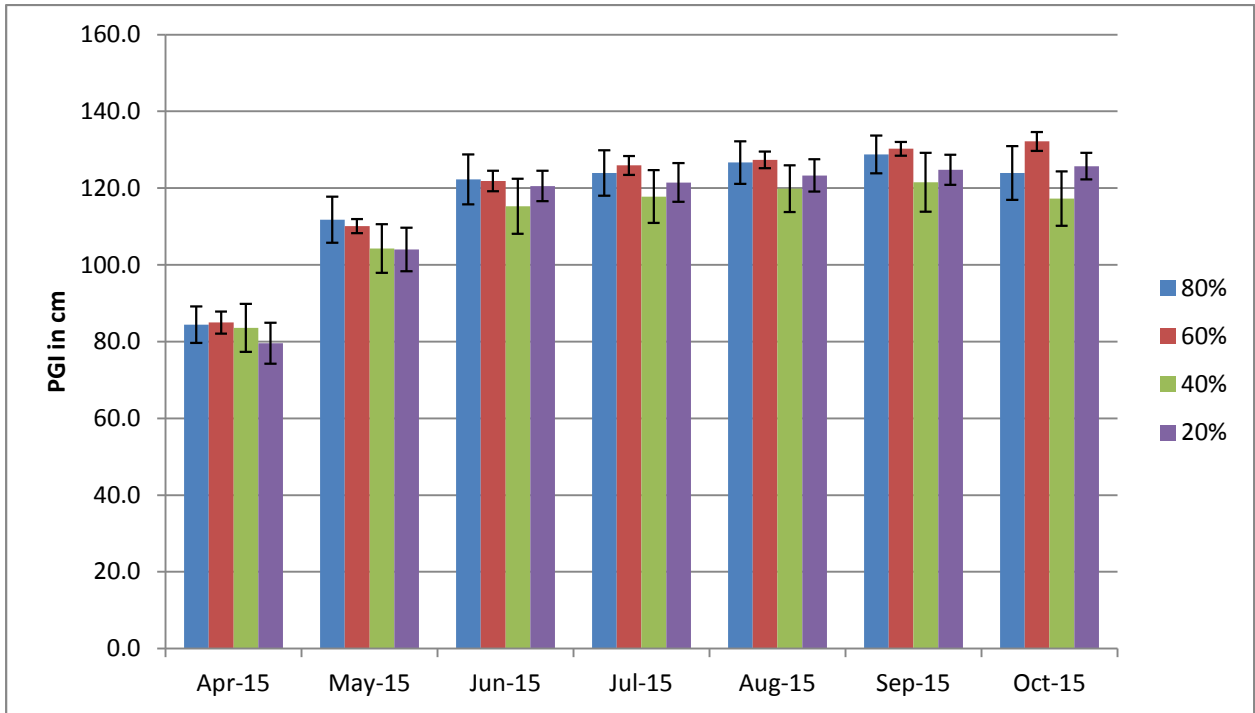


Figure 24a. Average monthly plant growth index for *Ribes viburnifolium* 'Spooner's Mesa' in 2015 on 4 ET₀-based irrigation levels.

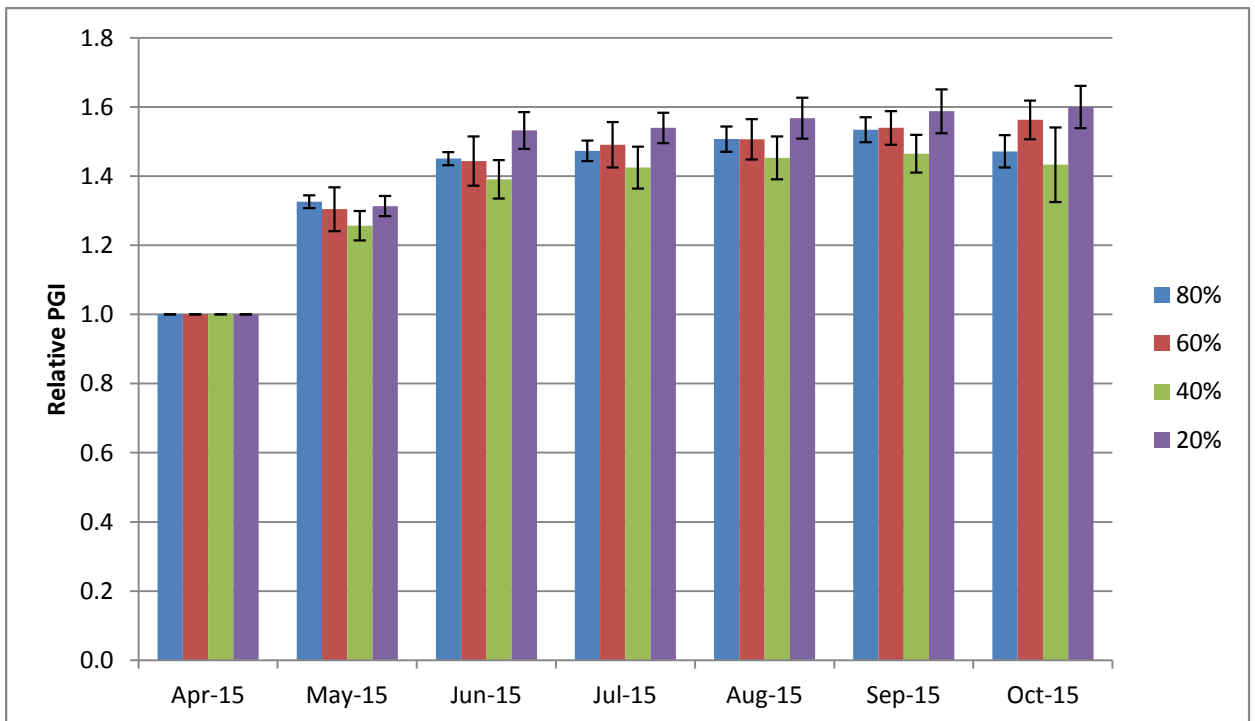


Figure 24b. Average monthly relative plant growth index for *Ribes viburnifolium* 'Spooner's Mesa' in 2015 on 4 ET₀-based irrigation levels.