

## TABLES AND FIGURES

Table 5. Average monthly quality ratings for *Buddleia* ‘Purple Splendor’ on 4 ET<sub>0</sub>-based irrigation levels in 2014.

|                           | March | April | May | June | July | Aug | Sept | Oct | AVG        |
|---------------------------|-------|-------|-----|------|------|-----|------|-----|------------|
| <b>Foliage</b>            |       |       |     |      |      |     |      |     |            |
| 80%                       | 4.3   | 4.7   | 4.5 | 3.8  | 3.5  | 3.5 | 3.2  | 3.2 | <b>3.8</b> |
| 60%                       | 4.3   | 4.4   | 4.3 | 4.0  | 3.8  | 3.3 | 3.3  | 3.2 | <b>3.8</b> |
| 40%                       | 4.3   | 4.8   | 4.5 | 4.0  | 3.8  | 3.3 | 3.2  | 3.0 | <b>3.9</b> |
| 20%                       | 4.7   | 4.7   | 4.8 | 4.0  | 3.7  | 3.5 | 3.7  | 3.2 | <b>4.0</b> |
| <b>Flowering</b>          |       |       |     |      |      |     |      |     |            |
| 80%                       |       | 1.0   | 5.0 | 3.7  | 4.3  | 3.8 | 2.8  | 2.7 | <b>3.3</b> |
| 60%                       |       | 1.0   | 5.0 | 3.5  | 4.5  | 3.7 | 2.8  | 2.8 | <b>3.3</b> |
| 40%                       |       | 1.0   | 5.0 | 4.2  | 4.8  | 3.7 | 3.7  | 2.7 | <b>3.6</b> |
| 20%                       |       | 1.0   | 5.0 | 3.8  | 4.0  | 3.2 | 3.7  | 2.7 | <b>3.3</b> |
| <b>Pest Tolerance</b>     |       |       |     |      |      |     |      |     |            |
| 80%                       | 5.0   | 5.0   | 4.8 | 4.5  | 4.4  | 5.0 | 5.0  | 5.0 | <b>4.8</b> |
| 60%                       | 5.0   | 5.0   | 4.7 | 4.5  | 4.7  | 5.0 | 5.0  | 5.0 | <b>4.9</b> |
| 40%                       | 5.0   | 5.0   | 4.7 | 4.8  | 4.7  | 5.0 | 5.0  | 5.0 | <b>4.9</b> |
| 20%                       | 5.0   | 5.0   | 4.8 | 4.3  | 4.3  | 5.0 | 5.0  | 5.0 | <b>4.8</b> |
| <b>Disease Resistance</b> |       |       |     |      |      |     |      |     |            |
| 80%                       | 5.0   | 5.0   | 5.0 | 4.7  | 4.3  | 3.7 | 5.0  | 5.0 | <b>4.7</b> |
| 60%                       | 5.0   | 4.8   | 5.0 | 4.7  | 4.0  | 3.5 | 5.0  | 5.0 | <b>4.6</b> |
| 40%                       | 5.0   | 5.0   | 5.0 | 4.8  | 4.7  | 3.5 | 5.0  | 5.0 | <b>4.8</b> |
| 20%                       | 5.0   | 5.0   | 5.0 | 4.8  | 4.5  | 3.7 | 5.0  | 5.0 | <b>4.8</b> |
| <b>Vigor</b>              |       |       |     |      |      |     |      |     |            |
| 80%                       | 4.8   | 4.8   | 4.8 | 4.7  | 4.5  | 4.5 | 4.3  | 4.7 | <b>4.6</b> |
| 60%                       | 4.8   | 5.0   | 5.0 | 4.8  | 4.8  | 3.8 | 4.3  | 4.3 | <b>4.6</b> |
| 40%                       | 5.0   | 4.8   | 4.8 | 4.7  | 5.0  | 3.8 | 4.5  | 4.0 | <b>4.6</b> |
| 20%                       | 4.8   | 4.7   | 4.8 | 4.8  | 4.8  | 4.7 | 4.8  | 4.7 | <b>4.8</b> |
| <b>Overall Appearance</b> |       |       |     |      |      |     |      |     |            |
| 80%                       | 4.0   | 4.0   | 5.0 | 4.3  | 4.2  | 4.1 | 3.3  | 3.3 | <b>4.0</b> |
| 60%                       | 3.8   | 4.2   | 5.0 | 4.5  | 4.8  | 3.8 | 3.7  | 3.4 | <b>4.1</b> |
| 40%                       | 3.8   | 4.0   | 5.0 | 4.7  | 4.8  | 3.8 | 3.7  | 3.1 | <b>4.1</b> |
| 20%                       | 4.0   | 4.1   | 5.0 | 4.7  | 4.6  | 4.2 | 4.0  | 3.7 | <b>4.3</b> |

## PHOTOS, TABLES, AND FIGURES

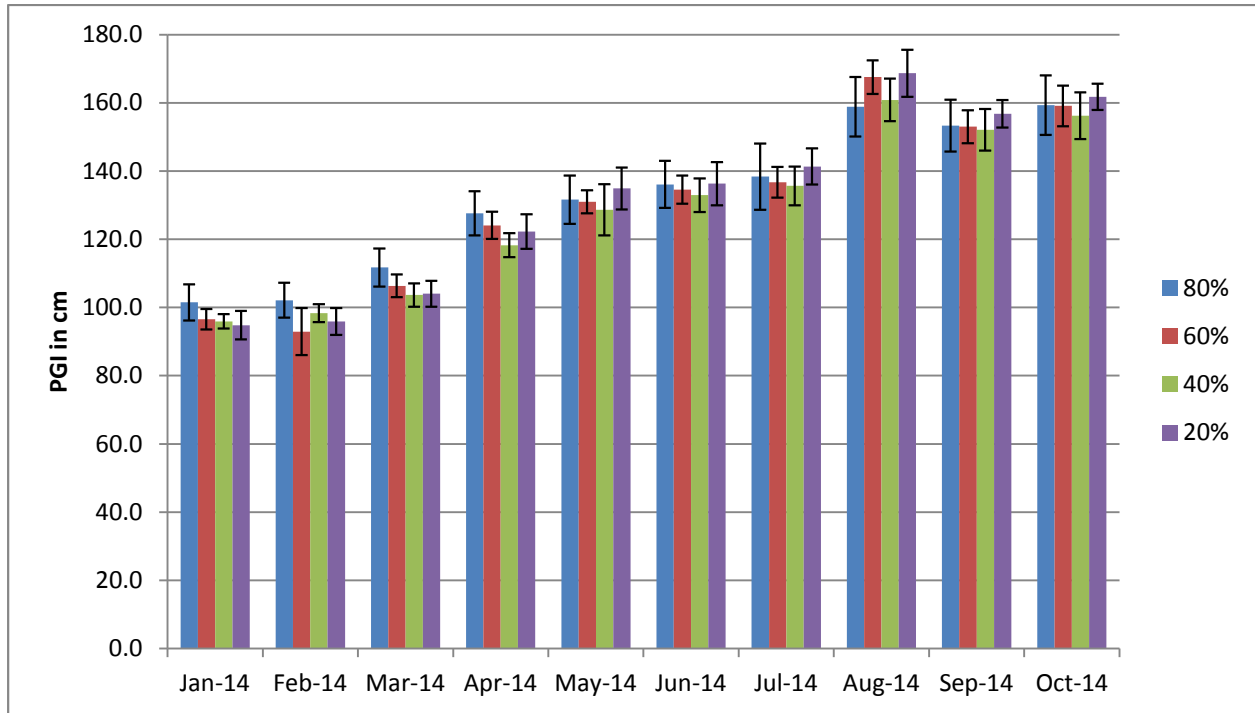


Figure 15a. Average monthly plant growth index of *Buddleia* ‘Purple Splendor’ in 2014 on 4  $ET_o$ -based irrigation levels. Bars represent  $\pm 1$  SE. There were no significant differences using ANOVA and Tukey’s HSD at  $p < 0.05$ .

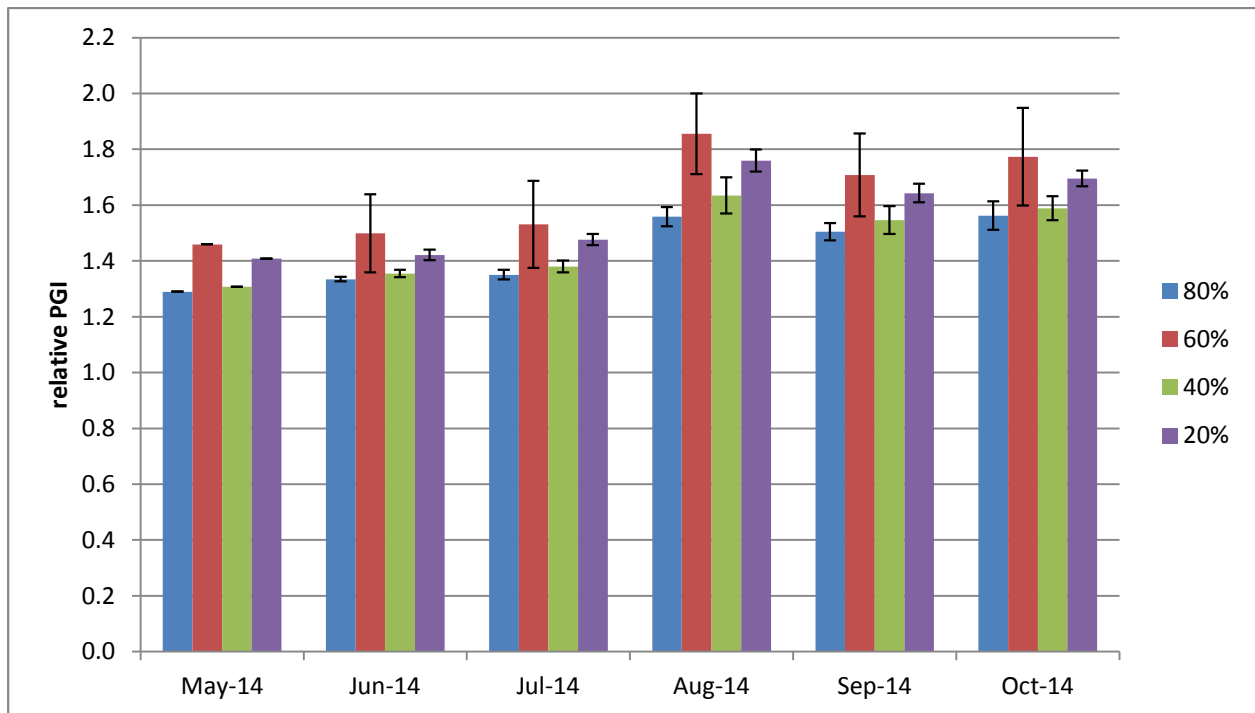


Figure 15b. Average monthly relative plant growth index of *Buddleia* ‘Purple Splendor’ in 2014 on 4  $ET_o$ -based irrigation levels. Bars represent  $\pm 1$  SE. There were no significant differences using ANOVA and Tukey’s HSD at  $p < 0.05$ .