

PHOTOS, TABLES, AND FIGURES

Table 11. Average monthly quality ratings for *Epilobium* ‘Sierra Salmon’ on 4 ET₀-based irrigation levels in 2014.

	March	April	May	June	July	Aug	Sept	Oct	AVG
Foliage									
80%	4.8	4.6	4.8	4.4	4.8	4.2	4.0	3.4	4.4
60%	5.0	4.8	5.0	4.8	5.0	4.3	3.8	3.0	4.4
40%	5.0	4.8	4.5	4.5	4.3	3.8	3.2	3.0	4.1
20%	5.0	4.8	4.5	4.7	4.8	4.3	4.7	3.7	4.6
Flowering									
80%					5.0		2.3	1.6	3.0
60%							1.0	2.0	1.5
40%							2.4	2.0	2.2
20%							1.3	1.7	1.5
Pest Tolerance									
80%	5.0	5.0	5.0	5.0	5.0	5.0	5.0	5.0	5.0
60%	5.0	5.0	5.0	5.0	5.0	5.0	5.0	5.0	5.0
40%	5.0	5.0	5.0	5.0	5.0	5.0	5.0	5.0	5.0
20%	5.0	5.0	5.0	5.0	5.0	5.0	5.0	5.0	5.0
Disease Resistance									
80%	5.0	5.0	5.0	5.0	5.0	5.0	5.0	5.0	5.0
60%	5.0	5.0	5.0	5.0	5.0	5.0	5.0	5.0	5.0
40%	5.0	5.0	5.0	5.0	5.0	4.3	5.0	5.0	4.9
20%	5.0	5.0	5.0	5.0	5.0	5.0	5.0	5.0	5.0
Vigor									
80%	4.0	4.0	4.0	4.2	4.4	4.0	4.4	4.0	4.1
60%	3.8	3.8	4.3	4.3	4.3	4.5	4.0	3.5	4.0
40%	4.5	4.3	4.0	4.0	4.2	4.0	3.8	3.8	4.1
20%	4.0	4.2	4.2	4.7	4.3	4.3	4.7	4.0	4.3
Overall Appearance									
80%	3.6	3.6	3.6	4.0	4.2	3.4	3.6	3.2	3.7
60%	3.5	3.8	3.8	4.0	4.3	3.8	3.3	3.0	3.7
40%	3.9	3.7	3.5	3.8	3.8	3.2	3.3	3.2	3.5
20%	3.7	3.7	3.7	3.8	4.0	3.5	3.8	3.6	3.7

PHOTOS, TABLES, AND FIGURES

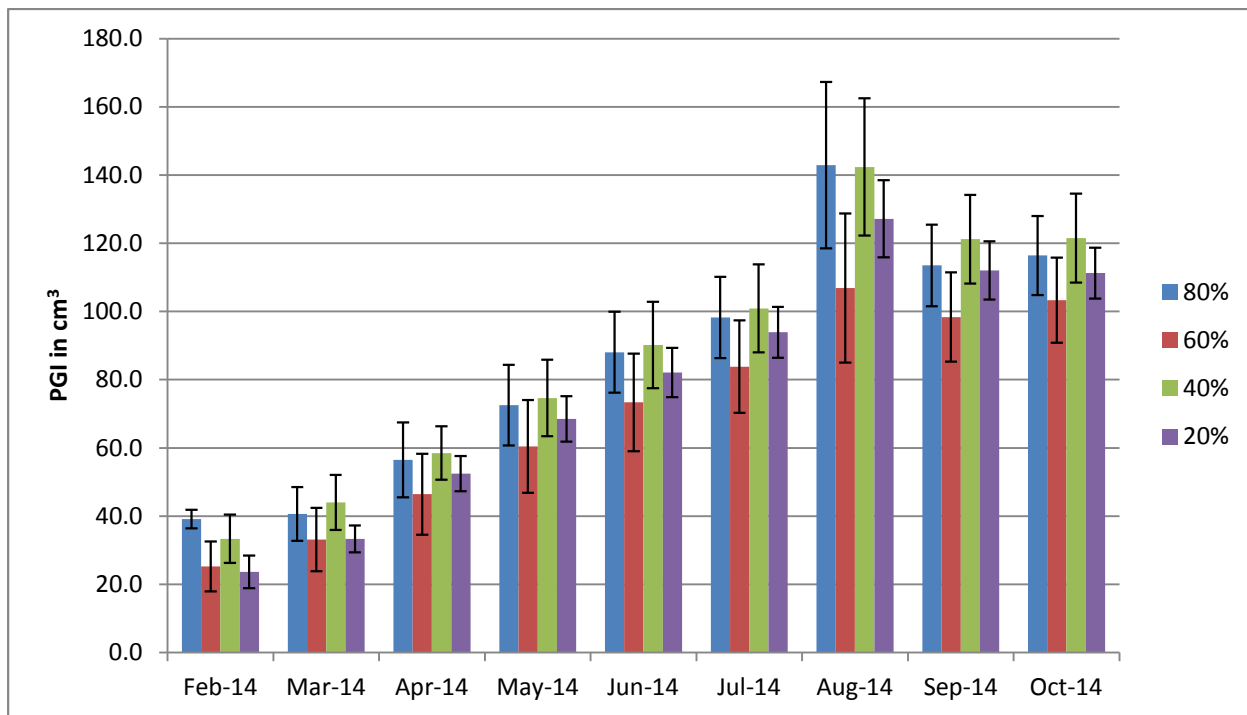


Figure 19a. Average monthly plant growth index of *Epilobium* 'Sierra Salmon' in 2014 on 4 ET_o-based irrigation levels. Bars represent ± 1 SE. There were no significant differences using ANOVA and Tukey's HSD at $p < 0.05$.

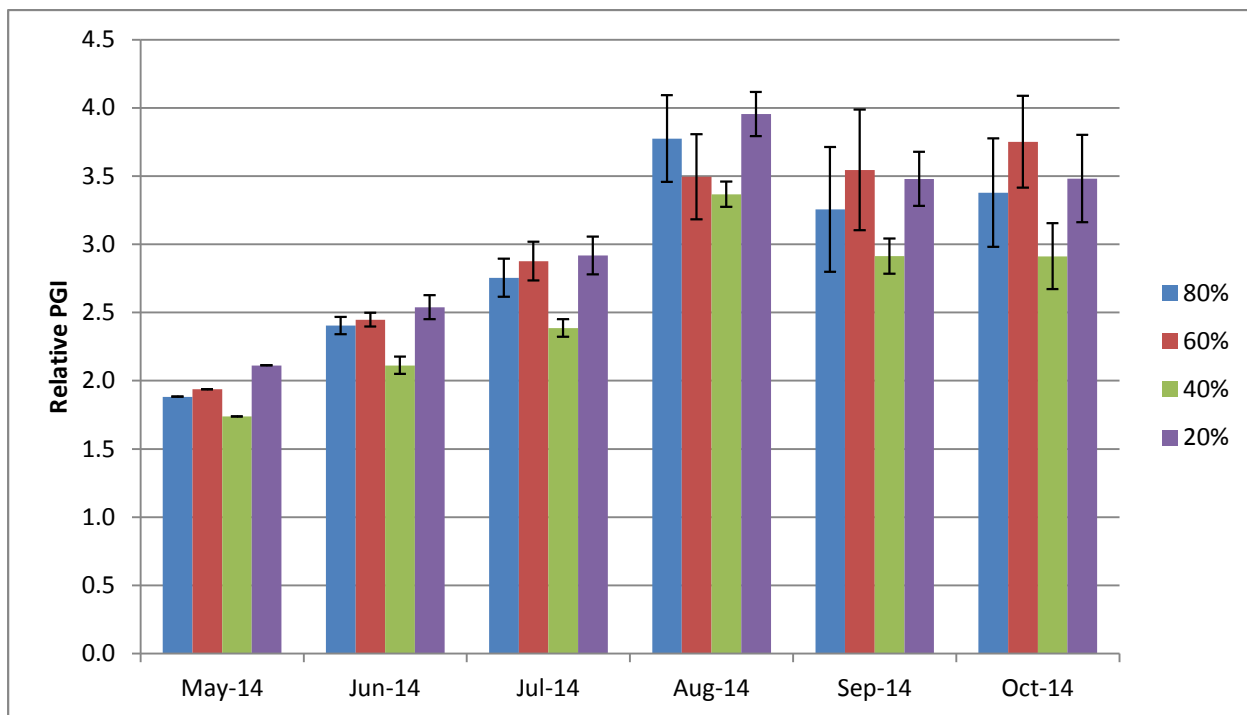


Figure 19b. Average monthly relative plant growth index of *Epilobium* 'Sidewinder' in 2014 on 4 ET_o-based irrigation levels. Bars represent ± 1 SE. There were no significant differences using ANOVA and Tukey's HSD at $p < 0.05$.