

PHOTOS, TABLES, AND FIGURES

Table 13. Average monthly quality ratings for *Helichrysum* ‘Ruby Clusters’ on 4 ET₀-based irrigation levels in 2014.

	March	April	May	June	July	Aug	Sept	Oct	AVG
Foliage									
80%	5.0	5.0	5.0	5.0	4.0	2.3	3.0	4.3	4.2
60%	5.0	5.0	5.0	4.5	3.7	2.5	2.3	2.4	3.8
40%	4.8	5.0	5.0	5.0	4.2	3.0	2.3	2.8	4.0
20%	5.0	5.0	4.8	4.6	4.2	3.5	2.0	3.3	4.0
Flowering									
80%	5.0	4.8	5.0	5.0	1.3				4.2
60%	4.3	4.6	4.8	4.7	1.0		1.0		3.4
40%	4.7	4.3	4.8	5.0	1.8				4.1
20%	4.2	3.8	4.7	4.4	1.5				3.7
Pest Tolerance									
80%	5.0	5.0	5.0	5.0	4.5	5.0	3.0	4.3	4.6
60%	5.0	5.0	5.0	5.0	4.7	4.7	2.7	2.4	4.3
40%	4.8	5.0	5.0	5.0	4.8	5.0	3.3	3.0	4.5
20%	5.0	5.0	4.8	4.6	4.2	4.8	2.3	3.3	4.2
Disease Resistance									
80%	5.0	5.0	5.0	5.0	4.5	5.0	5.0	5.0	4.9
60%	5.0	5.0	5.0	5.0	5.0	5.0	5.0	4.7	5.0
40%	5.0	5.0	5.0	5.0	4.7	5.0	4.3	4.3	4.8
20%	5.0	5.0	5.0	5.0	4.8	5.0	5.0	5.0	5.0
Vigor									
80%	5.0	5.0	5.0	4.8	4.5	3.0	3.7	4.3	4.4
60%	4.7	4.8	4.8	4.3	3.8	2.5	2.8	2.5	3.8
40%	4.7	4.7	4.7	4.8	4.3	3.0	2.7	3.5	4.0
20%	3.8	4.5	4.5	4.0	4.0	3.5	2.5	3.8	3.8
Overall Appearance									
80%	5.0	5.0	5.0	4.6	4.0	2.3	2.2	3.2	3.9
60%	4.7	4.6	4.8	3.9	3.3	2.3	2.0	2.1	3.5
40%	4.7	4.6	4.8	4.8	3.7	2.7	1.7	2.1	3.6
20%	4.8	4.3	4.7	3.7	3.8	2.9	2.0	2.8	3.6

PHOTOS, TABLES, AND FIGURES

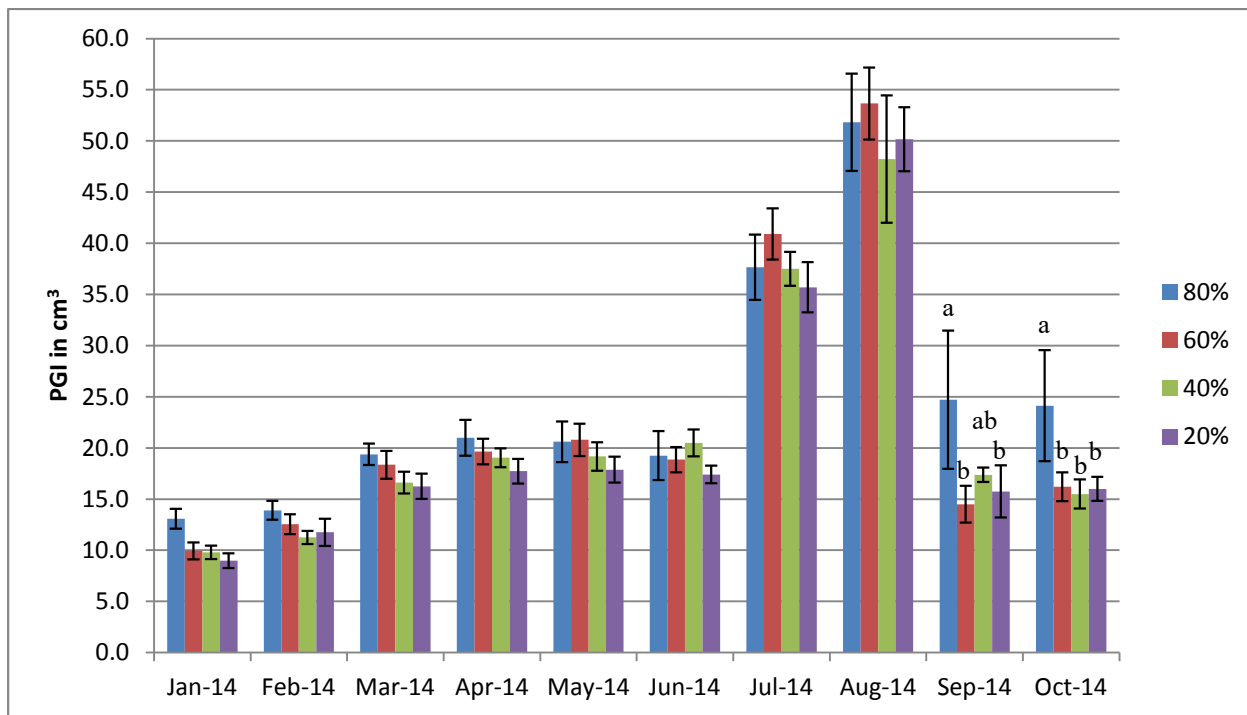


Figure 21a. Average monthly plant growth index of *Helichrysum* ‘Ruby Clusters’ in 2014 on 4 ET_0 -based irrigation levels. Bars represent ± 1 SE. No significant differences January through August. Bars with the same letters were not significantly different using ANOVA and Tukey’s HSD at $p < 0.05$.

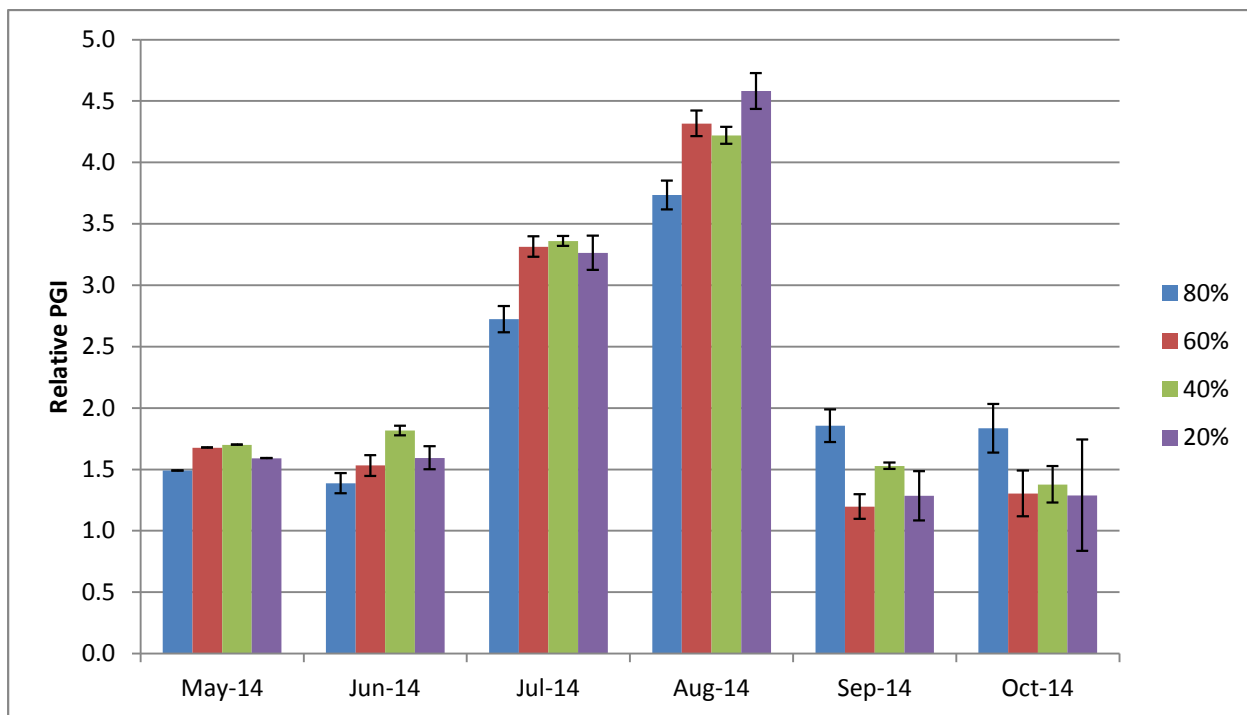


Figure 21b. Average monthly relative plant growth index of *Helichrysum* ‘Ruby Clusters’ in 2014 on 4 ET_0 -based irrigation levels. Bars represent ± 1 SE. There were no significant differences using ANOVA and Tukey’s HSD at $p < 0.05$.