

PHOTOS, TABLES, AND FIGURES

Table 14. Average monthly quality ratings for *Kniphofia* ‘Elvira’ on 4 ET₀-based irrigation levels in 2014.

	March	April	May	June	July	Aug	Sept	Oct	AVG
Foliage									
80%	2.8	3.7	4.2	3.2	3.2	3.3	2.8	2.9	3.3
60%	3.2	3.5	3.8	3.3	2.3	3.0	3.2	2.9	3.1
40%	2.6	2.6	3.8	3.2	3.2	3.4	3.0	3.0	3.1
20%	3.0	3.8	3.7	3.3	2.8	3.0	3.2	2.3	3.1
Flowering									
80%		2.3	4.3	4.2	1.7	1.0			2.7
60%		1.0	4.2	3.5	1.5				2.5
40%		1.5	3.7	3.7	2.0				2.7
20%			3.8	4.0	1.5	1.0			2.6
Pest Tolerance									
80%	4.7	4.5	5.0	3.8	4.5	5.0	5.0	3.3	4.5
60%	4.8	5.0	4.7	3.9	4.0	5.0	5.0	3.8	4.5
40%	4.4	3.0	4.3	3.8	4.4	5.0	5.0	3.4	4.2
20%	4.8	5.0	4.8	4.5	4.7	5.0	5.0	3.3	4.6
Disease Resistance									
80%	4.8	4.0	4.7	5.0	5.0	5.0	5.0	5.0	4.8
60%	4.8	4.5	4.7	5.0	5.0	5.0	5.0	5.0	4.9
40%	4.0	3.4	5.0	4.6	5.0	5.0	5.0	5.0	4.6
20%	4.8	5.0	4.6	4.8	5.0	5.0	5.0	5.0	4.9
Vigor									
80%	4.3	4.0	4.2	4.0	3.8	4.0	4.0	4.0	4.0
60%	4.5	4.2	4.2	4.5	3.3	4.2	4.3	4.7	4.2
40%	3.4	3.0	3.5	3.4	3.6	3.8	3.6	3.8	3.5
20%	4.4	4.0	3.8	4.0	3.5	3.2	3.5	3.3	3.7
Overall Appearance									
80%	2.8	3.4	4.8	3.7	3.2	3.2	2.7	2.9	3.3
60%	2.8	3.3	4.3	3.7	2.4	3.1	3.0	2.9	3.2
40%	2.2	2.6	3.5	2.9	3.0	3.3	2.8	2.9	2.9
20%	2.2	3.0	3.9	3.4	2.7	3.0	2.7	2.3	2.9

PHOTOS, TABLES, AND FIGURES

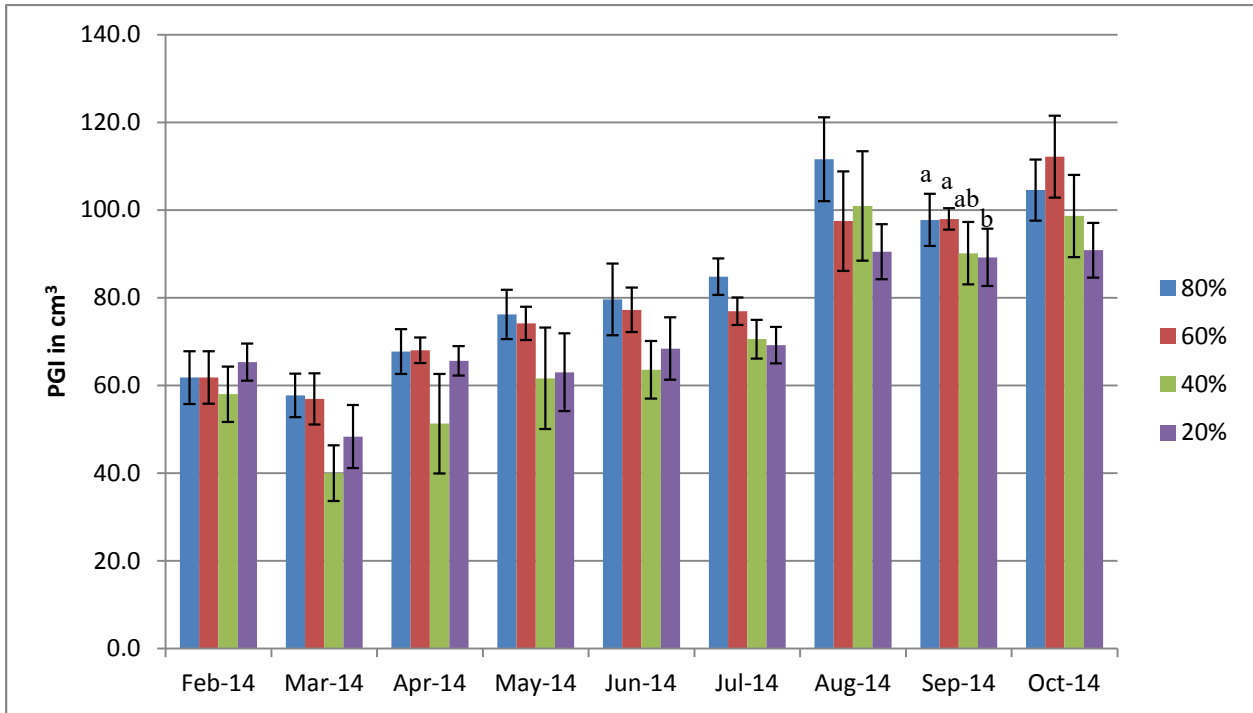


Figure 22a. Average monthly plant growth index of *Kniphofia* ‘Elvira’ in 2014 on 4 ET_0 -based irrigation levels. Bars represent ± 1 SE. No significant differences except in September. Bars with the same letters were not significantly different using ANOVA and Tukey’s HSD at $p < 0.05$.

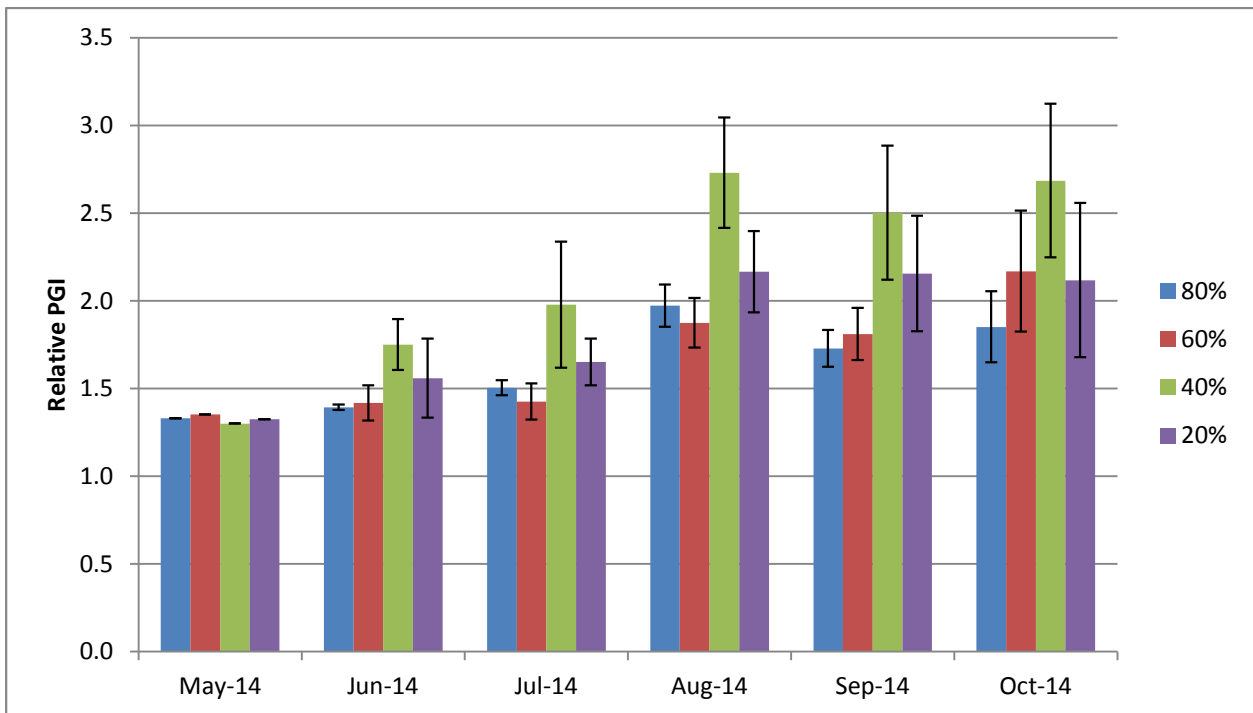


Figure 22b. Average monthly relative plant growth index of *Kniphofia* ‘Elvira’ in 2014 on 4 ET_0 -based irrigation levels. Bars represent ± 1 SE. No significant differences using ANOVA and Tukey’s HSD at $p < 0.05$.