

## PHOTOS, TABLES, AND FIGURES

Table 15. Average monthly quality ratings for Kurapia on 4 ET<sub>0</sub>-based irrigation levels in 2014.

	March	April	May	June	July	Aug	Sept	Oct	AVG
<b>Foliage</b>									
80%	4.7	4.8	5.0	5.0	5.0	5.0	5.0	4.8	<b>4.9</b>
60%	4.8	5.0	5.0	5.0	5.0	5.0	5.0	4.8	<b>5.0</b>
40%	4.7	5.0	5.0	5.0	5.0	5.0	5.0	5.0	<b>5.0</b>
20%	4.5	5.0	5.0	5.0	5.0	5.0	5.0	4.8	<b>4.9</b>
<b>Flowering</b>									
80%		1.0	4.3	5.0	5.0	5.0	5.0	3.7	<b>4.1</b>
60%		1.0	5.0	5.0	5.0	5.0	5.0	3.0	<b>4.1</b>
40%		1.0	5.0	5.0	5.0	5.0	5.0	3.1	<b>4.2</b>
20%		1.0	5.0	5.0	5.0	5.0	5.0	3.2	<b>4.2</b>
<b>Pest Tolerance</b>									
80%	5.0	5.0	5.0	5.0	5.0	5.0	5.0	5.0	<b>5.0</b>
60%	5.0	5.0	5.0	5.0	5.0	5.0	5.0	5.0	<b>5.0</b>
40%	5.0	5.0	5.0	5.0	5.0	5.0	5.0	5.0	<b>5.0</b>
20%	5.0	5.0	5.0	5.0	5.0	5.0	5.0	5.0	<b>5.0</b>
<b>Disease Resistance</b>									
80%	5.0	5.0	5.0	5.0	5.0	5.0	5.0	5.0	<b>5.0</b>
60%	5.0	5.0	5.0	5.0	5.0	5.0	5.0	5.0	<b>5.0</b>
40%	5.0	5.0	5.0	5.0	5.0	5.0	5.0	5.0	<b>5.0</b>
20%	5.0	5.0	5.0	5.0	5.0	5.0	5.0	5.0	<b>5.0</b>
<b>Vigor</b>									
80%	4.7	4.5	4.8	5.0	5.0	5.0	5.0	5.0	<b>4.9</b>
60%	4.2	4.2	4.6	5.0	5.0	5.0	5.0	4.8	<b>4.7</b>
40%	3.9	4.3	5.0	5.0	5.0	5.0	5.0	5.0	<b>4.8</b>
20%	4.5	4.5	5.0	5.0	5.0	5.0	5.0	5.0	<b>4.9</b>
<b>Overall Appearance</b>									
80%	2.3	3.7	4.0	4.8	5.0	5.0	5.0	4.2	<b>4.2</b>
60%	2.2	3.4	4.0	4.4	5.0	5.0	5.0	3.8	<b>4.1</b>
40%	2.2	3.3	4.0	4.6	5.0	5.0	5.0	4.0	<b>4.1</b>
20%	2.3	3.2	4.0	4.9	5.0	5.0	5.0	3.9	<b>4.2</b>

## PHOTOS, TABLES, AND FIGURES

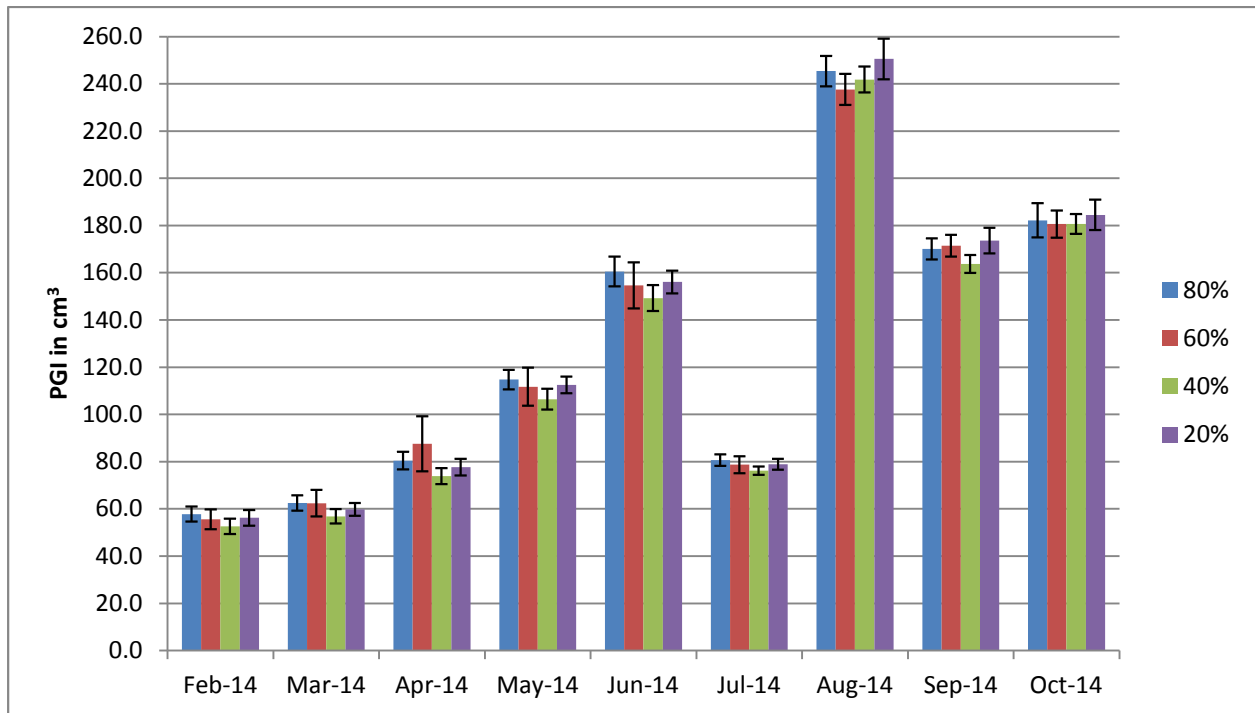


Figure 23a. Average monthly plant growth index of Kurapia in 2014 on 4  $ET_o$ -based irrigation levels. Bars represent  $\pm 1$  SE. No significant differences using ANOVA and Tukey's HSD at  $p < 0.05$ . Drop in July reflects pruning to 1m-diameter circle.

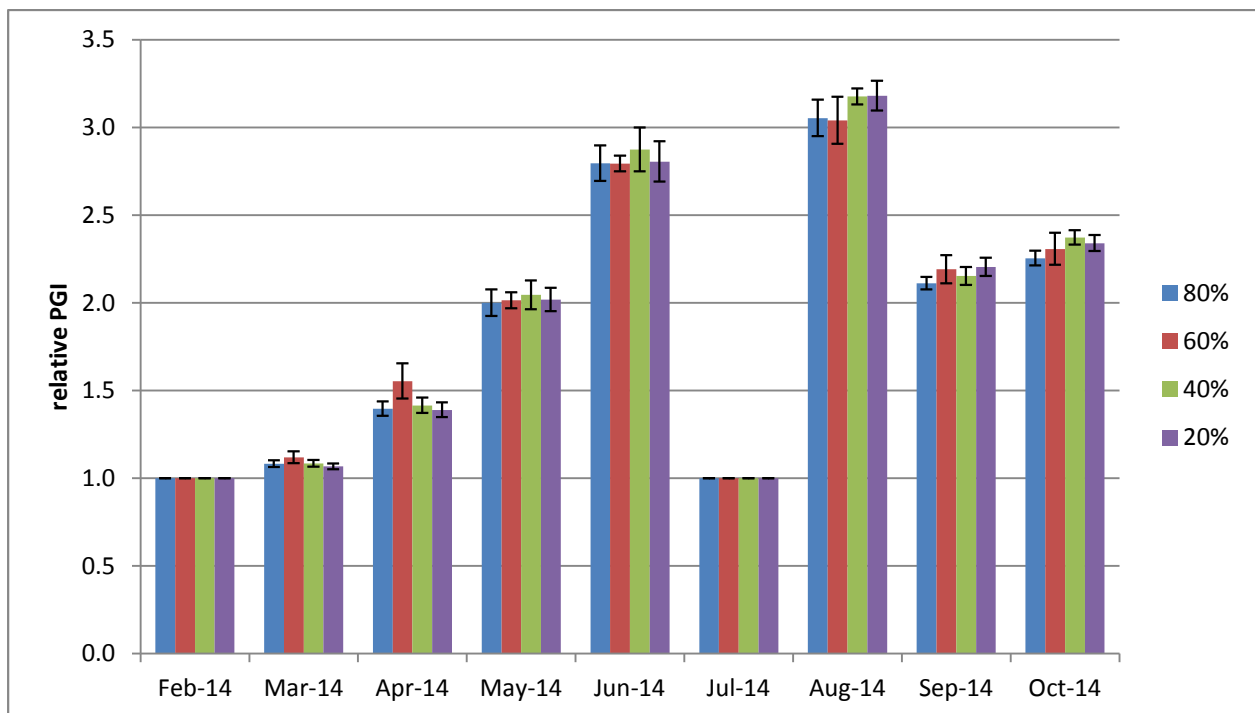


Figure 23b. Average monthly relative plant growth index of Kurapia in 2014 on 4  $ET_o$ -based irrigation levels. Bars represent  $\pm 1$  SE. No significant differences using ANOVA and Tukey's HSD at  $p < 0.05$ . Drop in July reflects pruning to 1m-diameter circle.