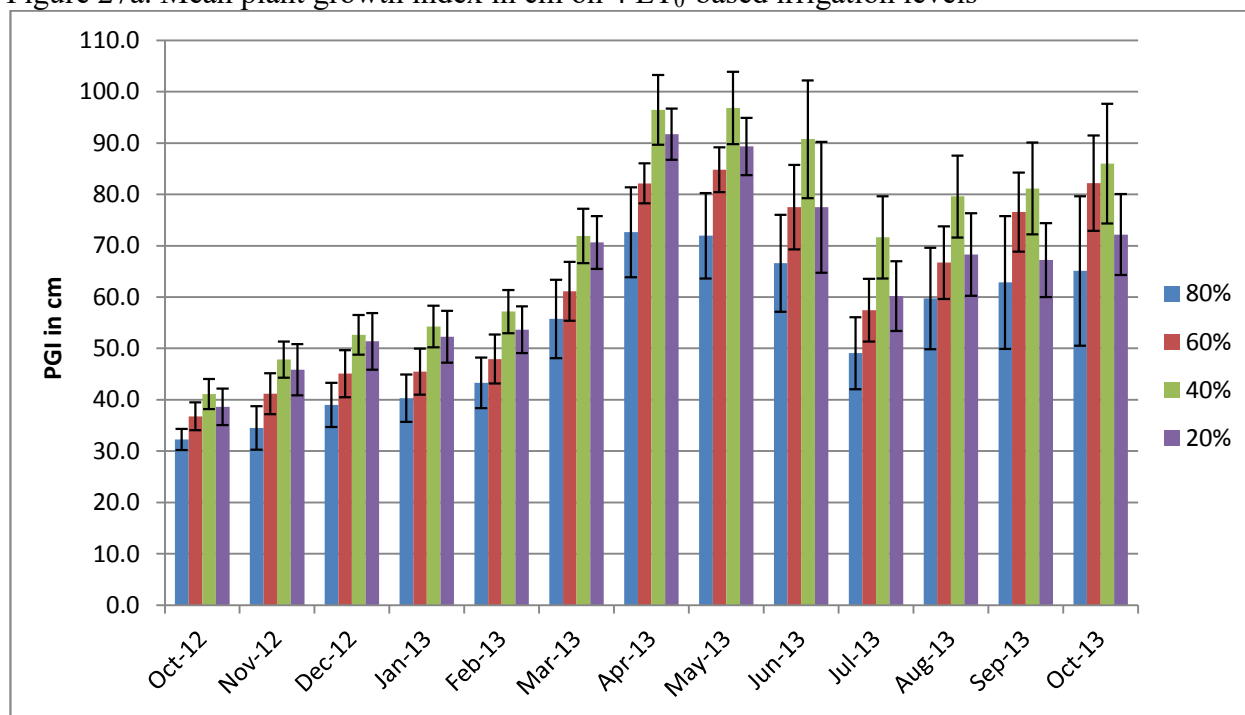


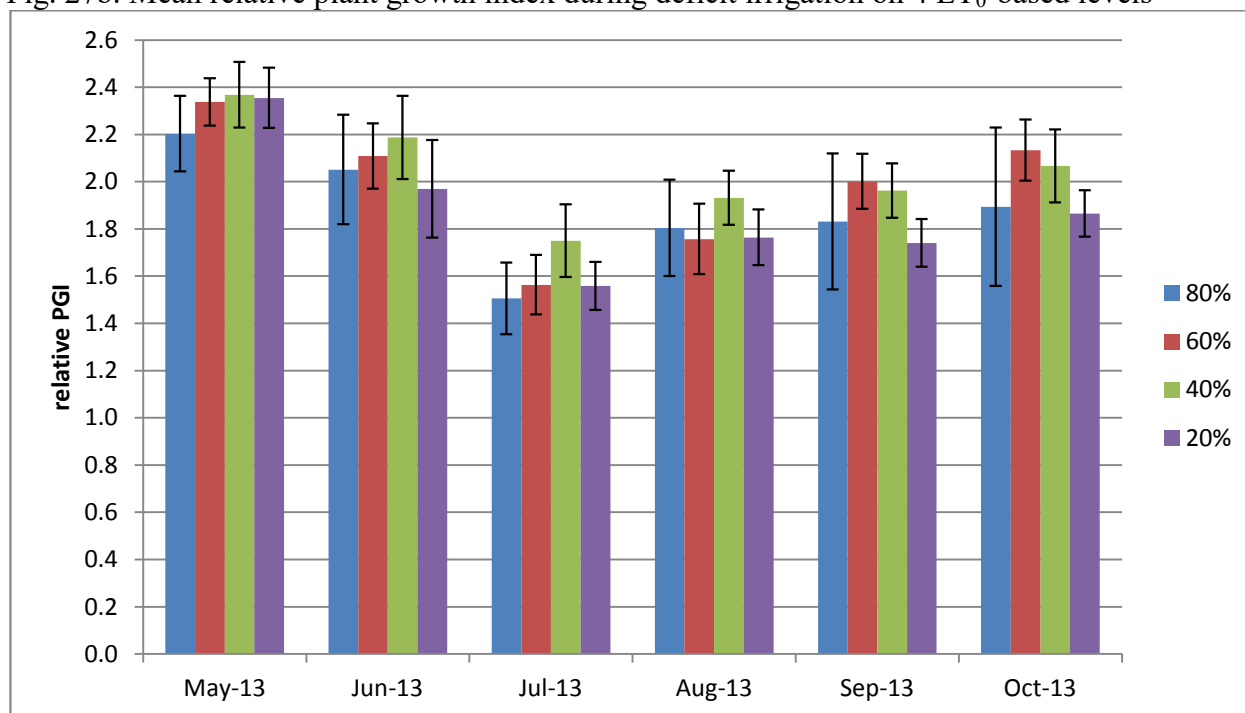
Phlomis purpurea

Figure 27a. Mean plant growth index in cm on 4 ET₀-based irrigation levels



Error bars represent ± 1 SE

Fig. 27b. Mean relative plant growth index during deficit irrigation on 4 ET₀-based levels



Error bars represent ± 1 SE

Table 20. Mean quality ratings in 6 categories on 4 ET₀-based irrigation levels

<i>Phlomis purpurea</i>														
foliage		OCT	DEC	JAN	FEB	MAR	APR	MAY	JUN	JUL	AUG	SEP	OCT	AVG
	80%	3.8	4.8	4.3	4.2	4.7	4.8	4.7	3.5	3.7	3.3	3.6	3.6	4.1
	60%	4.0	5.0	4.3	4.5	5.0	5.0	4.3	3.2	4.0	4.8	4.0	4.8	4.4
	40%	4.4	5.0	4.6	4.8	5.0	5.0	5.0	4.2	4.2	4.2	4.4	4.8	4.6
	20%	4.8	4.8	4.3	4.9	5.0	5.0	4.8	4.2	4.2	4.2	4.0	4.7	4.6
flowering														
	80%					1.0	4.8	1.0	1.3	1.0	2.0	1.0		1.7
	60%					1.0	5.0	1.0	1.4	1.0	1.0	1.3	1.0	1.6
	40%		1.0			2.0	5.0	1.0	1.2	1.0	1.0	1.0		1.7
	20%	1.0				1.0	5.0	1.0	1.3	1.3	1.3	1.0	1.0	1.6
pest tolerance														
	80%	5.0	5.0	5.0	5.0	5.0	5.0	5.0	5.0	5.0	4.3	5.0	5.0	4.9
	60%	5.0	5.0	5.0	5.0	5.0	5.0	5.0	5.0	5.0	5.0	5.0	5.0	5.0
	40%	5.0	5.0	5.0	5.0	5.0	5.0	5.0	5.0	5.0	5.0	5.0	5.0	5.0
	20%	5.0	5.0	5.0	5.0	5.0	5.0	5.0	5.0	5.0	5.0	5.0	5.0	5.0
disease resistance														
	80%	4.2	4.8	5.0	5.0	5.0	5.0	5.0	4.7	4.8	3.8	5.0	4.6	4.7
	60%	5.0	5.0	5.0	4.9	5.0	5.0	5.0	5.0	5.0	5.0	5.0	5.0	5.0
	40%	4.8	5.0	5.0	5.0	5.0	5.0	5.0	5.0	4.8	4.6	4.8	5.0	4.9
	20%	4.8	5.0	5.0	5.0	5.0	5.0	5.0	5.0	4.8	4.5	4.5	4.8	4.9
vigor														
	80%	3.2	3.8	3.0	3.5	3.8	3.5	3.2	3.2	3.3	3.2	3.4	3.2	3.4
	60%	3.9	4.4	3.4	4.0	4.3	4.7	4.0	3.6	3.4	4.4	4.0	4.2	4.0
	40%	4.0	5.0	4.6	4.5	4.8	4.8	4.8	4.4	4.6	3.6	3.8	4.0	4.4
	20%	4.4	4.8	4.2	4.8	4.6	4.2	4.2	4.0	4.6	4.2	3.8	4.4	4.3
overall appearance														
	80%	3.3	3.8	3.6	3.8	3.5	4.3	3.5	2.8	2.8	2.5	3.0	2.8	3.3
	60%	3.7	4.0	3.6	3.9	4.0	4.6	3.3	2.7	3.3	3.6	3.9	3.8	3.7
	40%	3.6	4.1	4.0	4.0	4.2	5.0	4.0	3.6	3.2	3.2	3.5	3.6	3.8
	20%	3.7	4.1	3.6	4.0	3.8	4.5	3.5	3.1	3.3	3.2	3.6	3.8	3.7