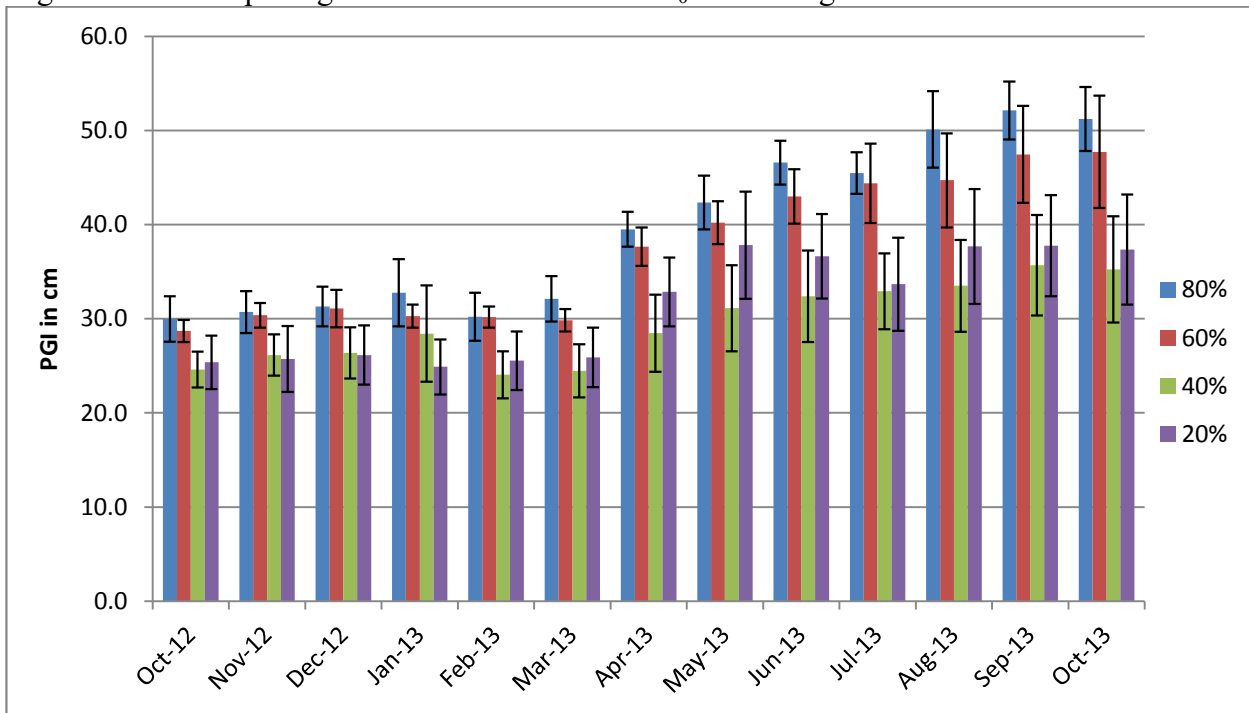


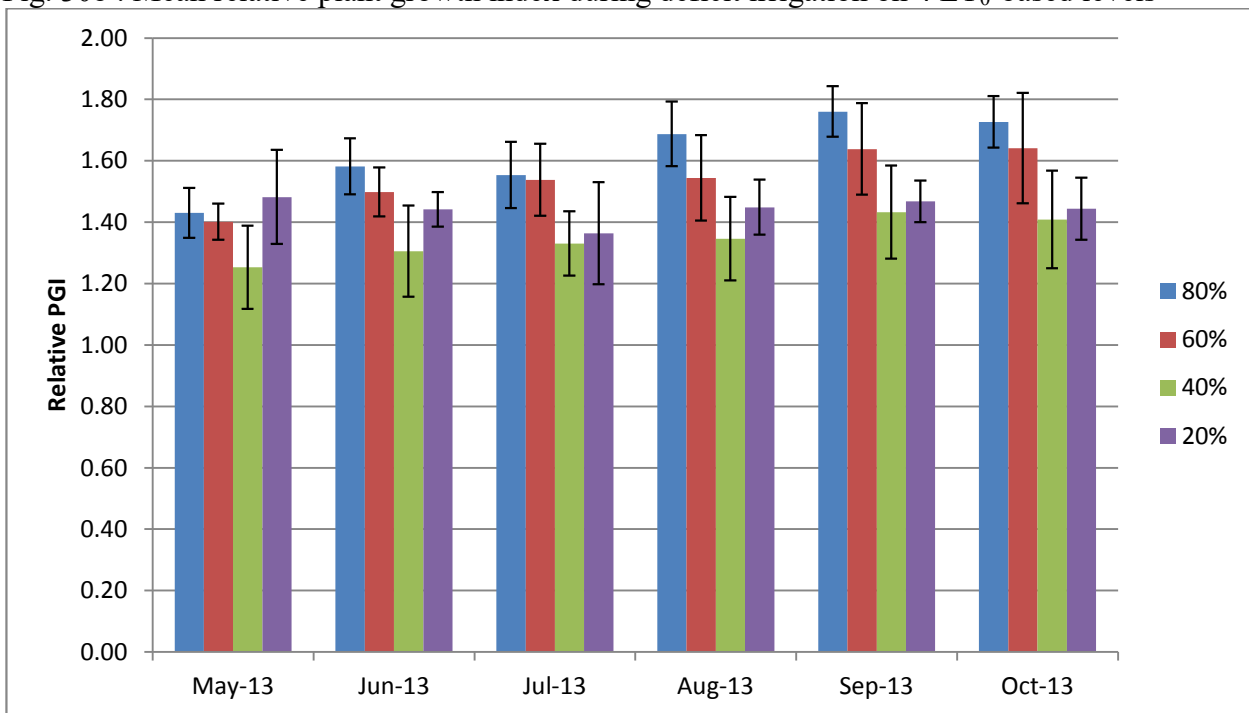
## *Teucrium chamaedrys* 'Prostrata'

Figure 30a. Mean plant growth index in cm on 4 ET<sub>0</sub>-based irrigation levels



Error bars represent  $\pm$  1 SE

Fig. 30b . Mean relative plant growth index during deficit irrigation on 4 ET<sub>0</sub>-based levels



Error bars represent  $\pm$  1 SE

Table 23. Mean quality ratings in 6 categories on 4 ET<sub>0</sub>-based irrigation levels

<i>Teucrium chamaedrys</i> 'Prostrata'														
foliage		OCT	DEC	JAN	FEB	MAR	APR	MAY	JUN	JUL	AUG	SEP	OCT	AVG
	<b>80%</b>	4.8	4.0	3.7	4.3	4.5	4.8	4.7	4.8	5.0	4.7	4.8	4.7	<b>4.6</b>
	<b>60%</b>	4.8	4.0	4.0	4.3	4.3	5.0	5.0	5.0	5.0	5.0	5.0	4.8	<b>4.7</b>
	<b>40%</b>	5.0	4.0	3.8	4.0	4.7	5.0	5.0	4.8	4.5	5.0	4.5	4.2	<b>4.5</b>
	<b>20%</b>	4.8	4.2	3.8	3.3	4.0	4.4	4.5	4.2	4.8	4.8	4.4	4.5	<b>4.3</b>
flowering														
	<b>80%</b>	2.5				1.0		4.8	3.0	2.0	1.7	1.7	1.3	<b>2.3</b>
	<b>60%</b>	2.0				4.0		5.0	4.0	2.5	2.2	2.0	2.0	<b>3.0</b>
	<b>40%</b>	1.5						5.0	3.7	2.6	2.6	2.2	3.0	<b>2.9</b>
	<b>20%</b>	1.3				5.0		4.6	2.4	1.5	2.0	1.5	1.7	<b>2.5</b>
pest tolerance														
	<b>80%</b>	5.0	5.0	5.0	5.0	5.0	5.0	5.0	5.0	5.0	5.0	5.0	5.0	<b>5.0</b>
	<b>60%</b>	5.0	5.0	5.0	5.0	5.0	5.0	5.0	5.0	5.0	5.0	5.0	5.0	<b>5.0</b>
	<b>40%</b>	5.0	5.0	5.0	5.0	5.0	5.0	5.0	5.0	5.0	5.0	5.0	5.0	<b>5.0</b>
	<b>20%</b>	5.0	5.0	5.0	5.0	5.0	5.0	5.0	5.0	5.0	5.0	5.0	5.0	<b>5.0</b>
disease resistance														
	<b>80%</b>	5.0	4.8	5.0	5.0	4.8	5.0	5.0	4.8	5.0	5.0	5.0	5.0	<b>5.0</b>
	<b>60%</b>	5.0	5.0	5.0	5.0	5.0	5.0	5.0	5.0	5.0	5.0	5.0	5.0	<b>5.0</b>
	<b>40%</b>	5.0	4.8	5.0	5.0	5.0	5.0	5.0	4.8	5.0	5.0	5.0	5.0	<b>5.0</b>
	<b>20%</b>	5.0	5.0	5.0	5.0	5.0	5.0	5.0	4.7	5.0	5.0	4.6	5.0	<b>4.9</b>
vigor														
	<b>80%</b>	3.8	4.3	3.7	4.3	4.0	4.2	4.2	4.3	4.3	4.3	4.2	4.0	<b>4.1</b>
	<b>60%</b>	5.0	4.8	4.7	4.8	4.8	5.0	5.0	5.0	5.0	5.0	5.0	5.0	<b>4.9</b>
	<b>40%</b>	4.7	4.7	4.3	4.7	4.5	4.8	5.0	5.0	4.5	4.5	4.3	4.3	<b>4.6</b>
	<b>20%</b>	4.0	3.8	3.8	3.7	4.2	4.0	4.0	3.5	3.8	4.2	4.2	3.5	<b>3.9</b>
overall appearance														
	<b>80%</b>	4.2	3.8	3.5	3.8	3.8	3.8	4.8	4.2	4.0	3.8	3.8	3.7	<b>3.9</b>
	<b>60%</b>	4.2	4.0	3.9	4.0	4.2	4.2	5.0	4.7	4.2	4.3	4.0	3.9	<b>4.2</b>
	<b>40%</b>	4.0	4.0	3.8	4.0	3.9	4.0	5.0	4.7	3.7	3.8	3.8	3.8	<b>4.0</b>
	<b>20%</b>	4.0	4.0	3.5	3.3	3.8	3.6	4.2	3.6	3.7	3.8	3.5	3.0	<b>3.7</b>

Table 24. Master Gardener average annual quality ratings and 2-year growth for *Teucrium chamaedrys* 'Prostrata'

COUNTY	Alameda	Nevada	Orange	SD coast	SD inland	San Joaquin	Shasta	Ventura
<b>Sunset Zone</b>	<b>9</b>	<b>7</b>	<b>23</b>	<b>24</b>	<b>21/23</b>	<b>14</b>	<b>9</b>	<b>21</b>
foliage	4.8	4.2	3.7	4.4	4.4	4.9	2.8	3.7
flower	3.0	3.2	1.8	2.5	2.4	5.0	3.5	1.4
bloom period	Jun-Dec	Jun-Oct	all year <b>(Jun)</b>	Jun-Aug	May-Aug	May-Jun	May-Jun	all year <b>(Jul)</b>
pest tolerance	5.0	5.0	5.0	4.9	4.9	5.0	5.0	5.0
disease resistance	5.0	5.0	5.0	5.0	5.0	5.0	5.0	5.0
vigor	3.5	4.3	3.6	3.7	3.4	4.9	2.8	3.6
overall appearance	<b>4.2</b>	<b>4.0</b>	<b>3.7</b>	<b>3.7</b>	<b>3.1</b>	<b>4.8</b>	<b>2.8</b>	<b>2.7</b>
<b>MSMTS</b>								
relative PGI	3.0	2.9	0.9	2.6	0.4	3.2	1.7	1.7
avg ht (cm)	15	21	12	15	11	15	14	10
avg wd (cm)	74	72	63	69	27	79	38	48
AVG HT (in)	6	8	5	6	4	6	6	4
AVG WD (in)	29	28	25	27	11	31	15	19

For all year bloom, the month of greatest flush is in bold print.