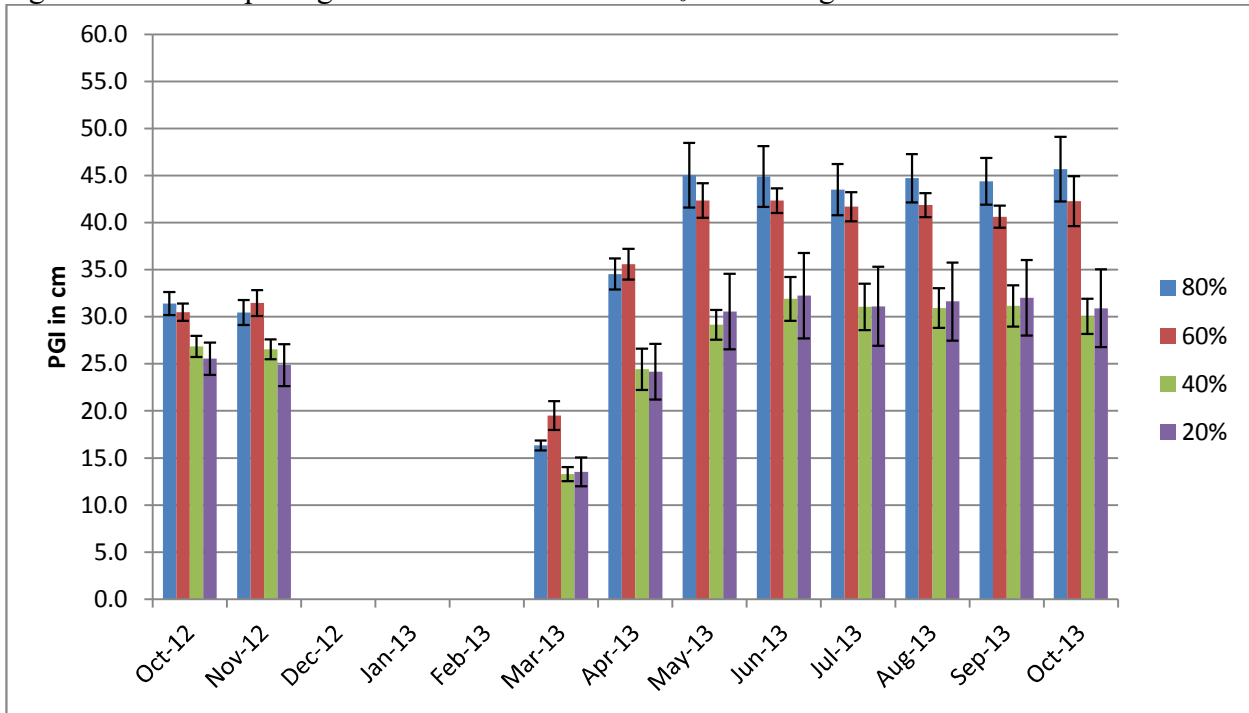


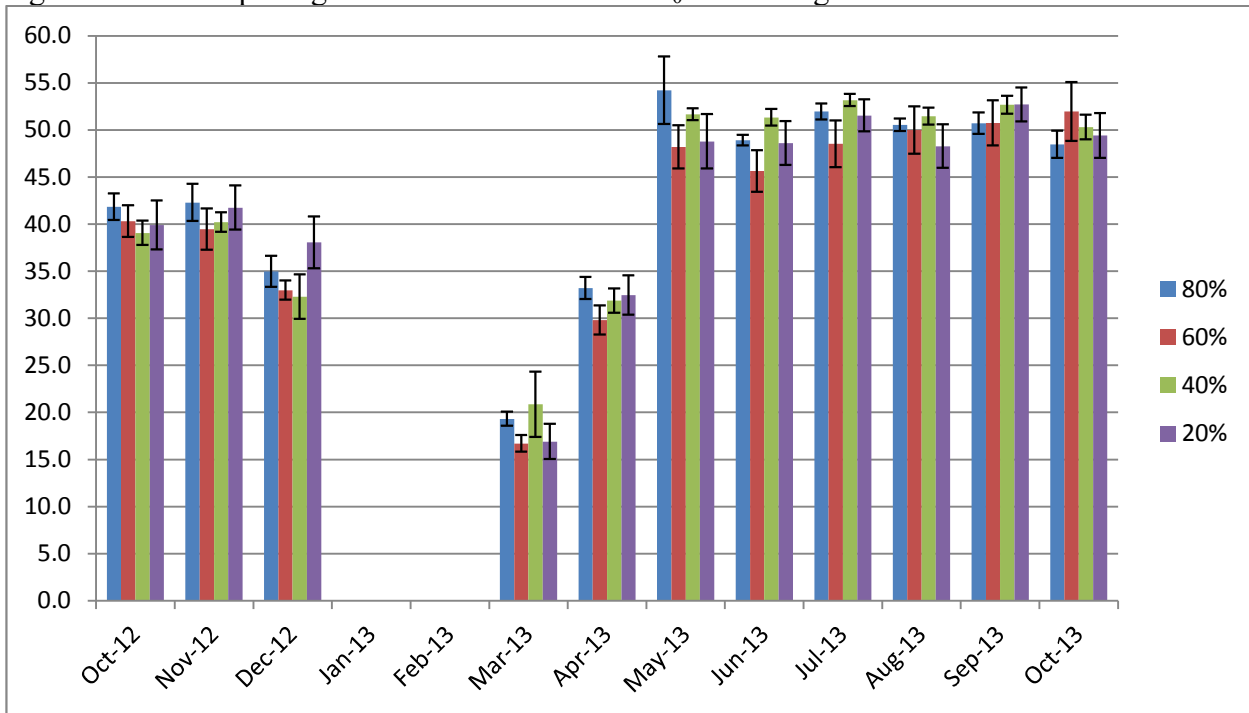
Ceratostigma plumbaginoides- SUN & SHADE

Figure 23a . Mean plant growth index in cm on 4 ET₀-based irrigation levels in **FULL SUN**



Error bars represent ± 1 SE

Figure 23b. Mean plant growth index in cm on 4 ET₀-based irrigation levels in **SHADE**



Error bars represent ± 1 SE

Ceratostigma plumbaginoides- SUN & SHADE

Figure 23c. Mean relative plant growth index during deficit irrigation on 4 ET₀-based levels in **FULL SUN**

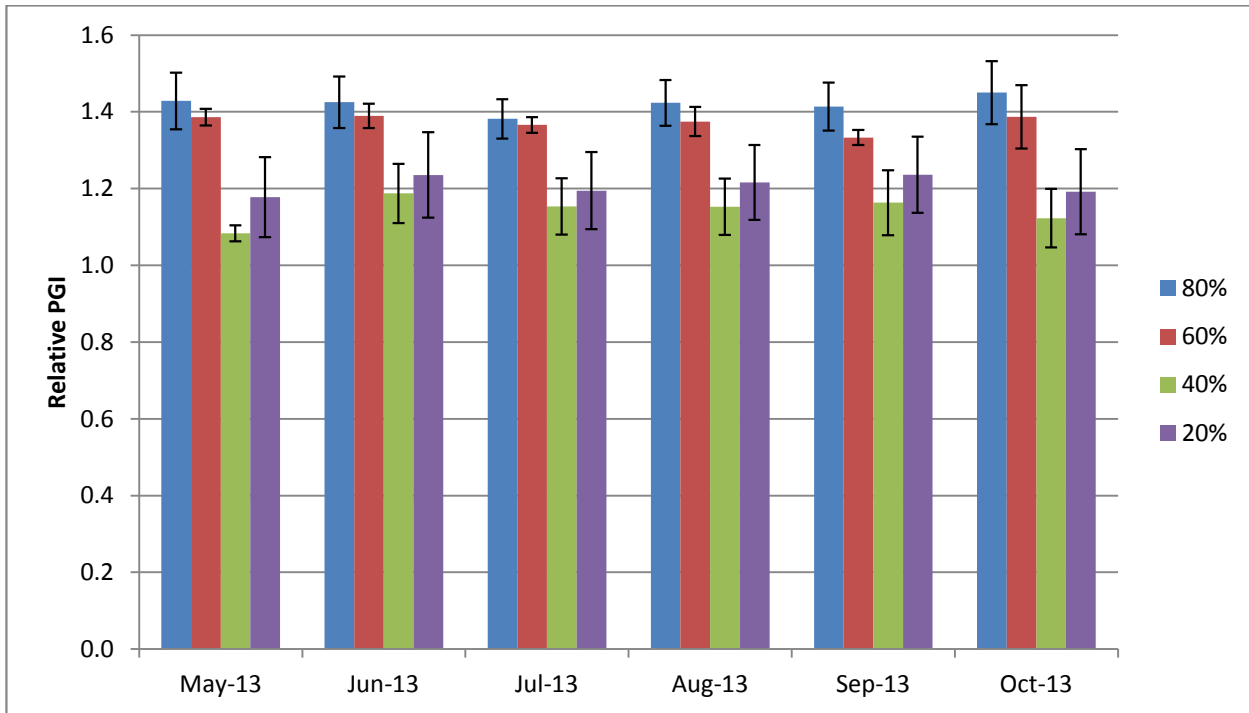


Figure 23d. Mean relative plant growth index during deficit irrigation on 4 ET₀-based levels in **SHADE**

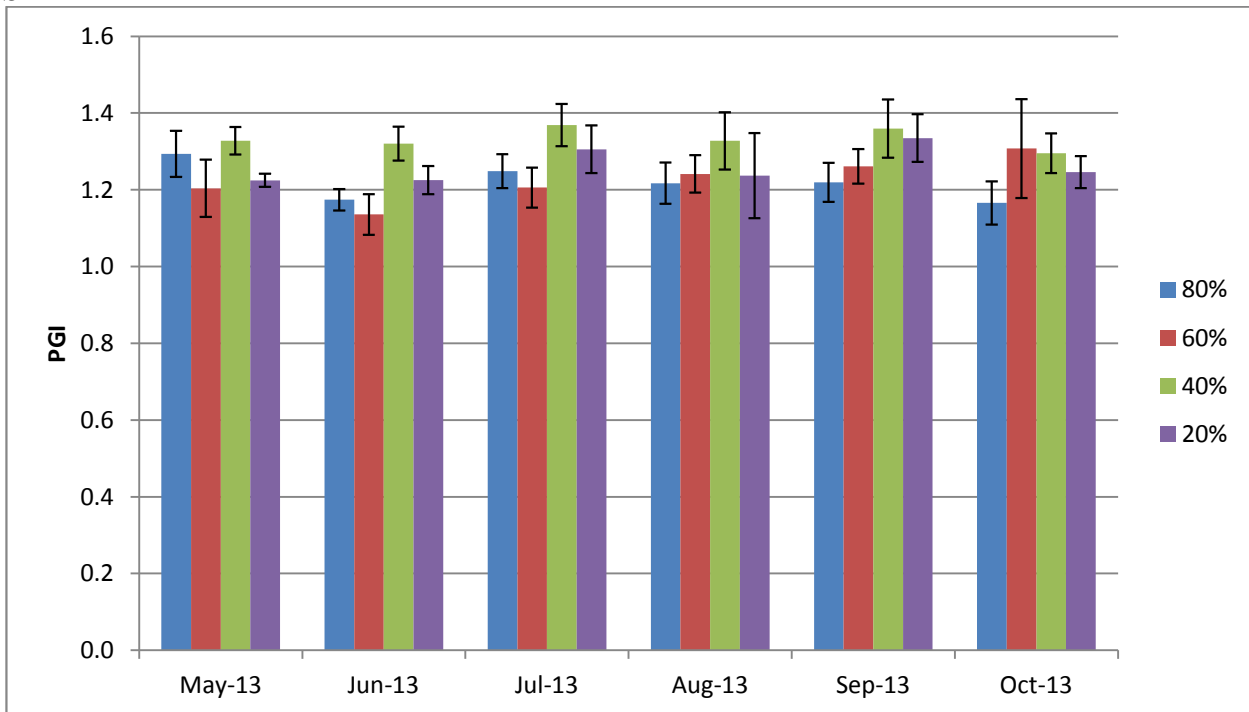


Table 12. Mean quality ratings in 6 categories on 4 ET₀-based irrigation levels in FULL SUN

<i>Ceratostigma plumbaginoides</i>- SUN														
		NOV	DEC	FEB	MAR	APR	MAY	JUN	JUL	AUG	SEP	OCT	AVG SUN	AVG SHD
foliage														
	80%	4.0			5.0	3.7	4.5	4.0	3.7	3.3	3.0	3.2	3.8	3.6
	60%	4.0			5.0	3.7	5.0	3.7	3.7	2.8	2.3	2.5	3.4	3.5
	40%	3.8			4.8	3.7	4.2	3.4	3.4	3.2	3.0	2.8	3.6	3.5
	20%	4.0	3.5		4.8	4.0	4.0	3.3	3.8	3.3	3.0	2.8	3.7	3.6
flowering														
	80%	1.8					2.8	4.8	4.2	2.5	1.8	1.2	2.7	2.0
	60%	1.3					3.5	4.8	3.2	1.8	1.3	1.0	2.4	2.1
	40%	1.7					2.5	4.6	3.2	1.4	1.8	1.0	2.3	2.1
	20%	2.0					3.0	3.6	2.7	2.7	2.3	1.8	2.6	1.9
pest tolerance														
	80%	4.8			5.0	4.5	5.0	4.8	5.0	5.0	5.0	5.0	4.9	5.0
	60%	4.5		5.0	5.0	4.3	5.0	4.8	5.0	5.0	5.0	5.0	4.9	5.0
	40%	4.6			5.0	4.6	4.8	5.0	4.8	5.0	4.6	4.2	4.7	5.0
	20%	4.8	5.0		5.0	4.8	4.8	5.0	5.0	5.0	5.0	4.3	4.9	5.0
disease resistance														
	80%	4.2			5.0	5.0	4.8	4.2	3.7	3.5	3.0	4.0	4.1	5.0
	60%	4.3		5.0	5.0	4.8	5.0	4.0	3.7	2.8	3.0	3.5	4.1	5.0
	40%	4.0			5.0	4.6	4.6	4.4	3.6	3.2	3.2	3.8	4.0	5.0
	20%	4.5	4.0		5.0	5.0	4.8	4.3	4.3	4.7	3.8	4.2	4.5	5.0
vigor														
	80%	4.3			4.3	5.0	5.0	4.8	5.0	4.8	4.8	4.8	4.8	3.7
	60%	4.2		1.0	3.7	5.0	5.0	5.0	5.0	4.8	4.3	3.7	4.2	3.5
	40%	4.2			2.8	4.2	3.8	3.8	4.2	4.0	4.4	3.8	3.9	3.7
	20%	3.2	3.0		3.2	3.8	3.5	3.7	4.0	3.8	3.7	3.3	3.5	3.5
overall appearance														
	80%	3.8			3.7	3.3	4.8	4.7	4.2	3.4	3.7	3.3	3.9	3.4
	60%	3.7		1.0	3.5	3.4	4.8	4.8	3.6	3.0	3.0	2.3	3.3	3.3
	40%	3.6			3.0	3.4	3.8	4.4	3.6	3.2	3.0	2.9	3.4	3.4
	20%	3.5	3.5		3.3	3.2	3.7	3.8	3.8	3.5	3.5	3.2	3.5	3.3

Table 13. Mean quality ratings in 6 categories on 4 ET₀-based irrigation levels in SHADE

<i>Ceratostigma plumbaginoides</i>- SHADE												
foliage	NOV	DEC	JAN	APR	MAY	JUN	JUL	AUG	SEP	OCT	AVG	
80%	3.1	3.0	2.2	4.7	2.8	3.0	5.0	4.9	4.0	3.2	3.6	
60%	3.1	3.0	2.4	4.6	2.6	3.0	4.8	5.0	3.6	3.2	3.5	
40%	3.0	3.0	2.0	5.0	2.3	2.7	4.8	4.7	3.7	3.5	3.5	
20%	3.1	3.3	2.4	4.6	3.0	3.2	5.0	4.9	3.4	3.1	3.6	
flowering												
80%							2.8	1.8	2.4	1.0	2.0	
60%							2.7	1.5	3.0	1.0	2.1	
40%							2.6	1.8	2.7	1.2	2.1	
20%							2.3	1.7	2.7	0.9	1.9	
pest tolerance												
80%	4.9	5.0	5.0	5.0	5.0	5.0	5.0	5.0	5.0	5.0	5.0	
60%	5.0	5.0	5.0	5.0	5.0	5.0	5.0	5.0	5.0	5.0	5.0	
40%	5.0	5.0	5.0	5.0	5.0	5.0	5.0	5.0	5.0	5.0	5.0	
20%	5.0	5.0	5.0	5.0	5.0	5.0	5.0	5.0	5.0	5.0	5.0	
disease resistance												
80%	5.0	5.0	5.0	5.0	5.0	5.0	5.0	5.0	5.0	5.0	5.0	
60%	5.0	5.0	5.0	5.0	5.0	5.0	5.0	5.0	5.0	5.0	5.0	
40%	5.0	5.0	5.0	5.0	5.0	5.0	5.0	5.0	5.0	5.0	5.0	
20%	5.0	5.0	5.0	5.0	5.0	5.0	5.0	5.0	5.0	5.0	5.0	
vigor												
80%	3.3	3.3	3.5	3.2	3.5	3.2	4.3	4.7	4.5	4.1	3.7	
60%	3.1	3.3	3.2	3.1	3.2	3.2	4.2	4.4	3.8	3.9	3.5	
40%	3.2	3.1	3.2	3.4	3.7	3.7	4.0	4.3	4.5	4.2	3.7	
20%	2.9	3.0	3.4	3.2	3.6	3.4	3.9	4.2	3.9	4.0	3.5	
overall appearance												
80%	3.1	3.1	2.0	2.8	3.0	3.1	4.4	4.4	4.3	3.8	3.4	
60%	3.1	3.2	2.0	2.8	2.8	3.1	4.1	4.2	3.6	4.0	3.3	
40%	3.1	3.3	2.0	2.8	3.0	3.2	4.3	4.3	4.3	3.9	3.4	
20%	3.0	3.0	2.0	2.9	3.2	3.3	3.8	4.3	3.7	4.0	3.3	

Table 14. Master Gardener average annual quality ratings and 2-year growth for *Ceratostigma plumbaginoides*

COUNTY	Alameda	Nevada	Orange	San Joaquin	SD inland	SD coastal	Shasta	Ventura
Sunset Zone	9	7	23	14	21/23	24	9	21
foliage	3.7	4.0	2.6	3.6	3.4	3.1	2.2	3.3
flower	4.1	3.8	2.7	2.3	2.7	2.9	3.3	2.0
bloom period	Jun-Oct	Jul-Oct	Jul-Sep	Mar-Dec	May-Oct	Jul-Sep	Jul-Nov	all year
pest tolerance	5.0	4.5	5.0	5.0	4.1	3.7	4.9	5.0
disease resistance	5.0	4.8	5.0	5.0	4.9	5.0	5.0	5.0
vigor	3.6	3.1	2.4	3.8	3.3	2.9	2.1	3.5
overall appearance	3.6	3.1	2.4	3.8	3.3	2.9	2.0	3.5
MSMTS								
relative PGI	1.9	1.8	5.5	1.4	2.8	0.4	1.8	4.3
avg ht (cm)	19	23	16	29	18	13	28	27
avg wd (cm)	90	38	53	61	55	16	48	113
AVG HT (in)	7	9	6	11	7	5	11	11
AVG WD (in)	35	15	21	24	22	6	19	45