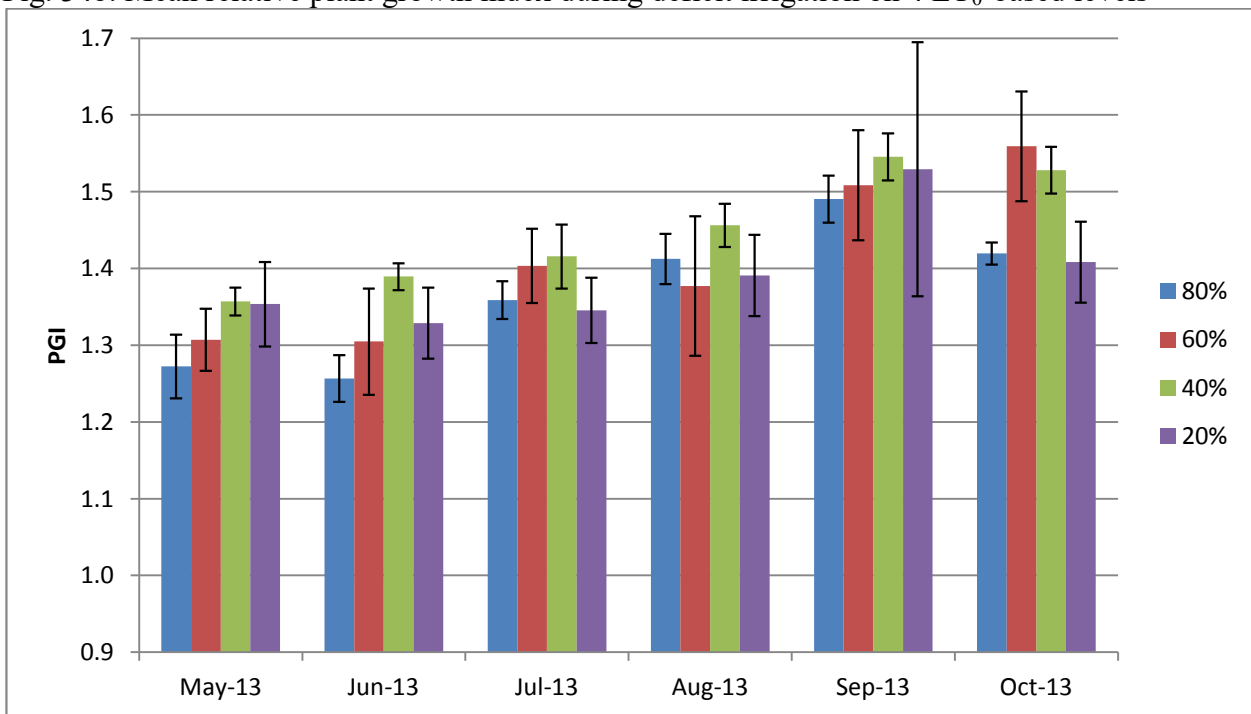


Error bars represent ± 1 SE

Fig. 34b. Mean relative plant growth index during deficit irrigation on 4 ET₀-based levels



Error bars represent ± 1 SE

Table 31. Mean quality ratings in 6 categories on 4 ET₀-based irrigation levels

<i>Daphne odora</i> 'Aureomarginata'													
foliage	NOV	DEC	JAN	FEB	MAR	APR	MAY	JUN	JUL	AUG	SEP	OCT	AVG
80%	2.9	3.5	3.9	3.0	3.0	3.3	2.8	3.0	3.0	3.0	3.3	3.2	3.2
60%	3.2	3.4	4.0	3.4	3.0	3.0	3.2	3.2	3.4	3.6	3.1	3.2	3.3
40%	2.9	3.2	3.9	3.1	3.5	2.9	2.6	2.6	2.9	3.3	3.0	3.0	3.1
20%	3.4	3.7	3.8	3.2	3.0	3.0	3.3	3.1	3.6	3.3	3.3	3.1	3.3
flowering													
80%					1.7								1.7
60%					2.4								2.4
40%					2.0								2.0
20%					1.7	1.0							1.3
pest tolerance													
80%	5.0	3.7	5.0	5.0	5.0	5.0	5.0	5.0	5.0	5.0	5.0	5.0	4.9
60%	5.0	3.7	5.0	5.0	5.0	5.0	5.0	5.0	5.0	5.0	5.0	5.0	4.9
40%	5.0	3.7	5.0	5.0	5.0	5.0	5.0	5.0	5.0	5.0	5.0	5.0	4.9
20%	5.0	3.8	5.0	5.0	5.0	5.0	5.0	5.0	5.0	5.0	5.0	5.0	4.9
disease resistance													
80%	5.0	5.0	5.0	5.0	5.0	3.4	5.0	5.0	5.0	5.0	5.0	5.0	4.9
60%	5.0	5.0	5.0	5.0	5.0	3.5	4.6	4.8	5.0	4.8	5.0	5.0	4.8
40%	5.0	5.0	5.0	4.8	5.0	3.6	5.0	5.0	5.0	5.0	5.0	5.0	4.9
20%	5.0	5.0	4.5	5.0	5.0	3.3	5.0	5.0	5.0	5.0	5.0	5.0	4.8
vigor													
80%	3.3	3.8	3.2	3.2	3.7	3.7	3.5	3.4	3.6	3.7	3.4	3.5	3.5
60%	4.0	3.7	3.8	3.6	4.3	4.2	3.8	3.8	3.8	4.6	3.5	3.9	3.9
40%	3.1	3.1	3.2	3.0	3.4	3.2	3.3	3.3	3.6	3.5	3.2	3.5	3.3
20%	3.3	3.4	3.3	3.3	3.4	3.5	3.5	3.4	3.9	3.8	3.5	3.6	3.5
overall appearance													
80%	3.3	3.5	3.0	3.3	3.3	3.3	3.0	3.1	3.0	3.3	3.3	3.3	3.2
60%	3.5	3.8	3.4	3.4	3.5	3.2	3.3	3.6	3.5	3.7	3.3	3.2	3.5
40%	3.2	3.4	3.2	3.2	3.6	3.3	2.8	3.0	3.1	3.3	2.8	3.3	3.2
20%	3.4	3.4	3.0	3.4	3.1	3.3	3.3	3.3	3.5	3.5	2.9	3.5	3.3

Table 32. Master Gardener average annual quality ratings and 2-year growth for *Daphne odora* 'Aureomarginata'

COUNTY	Orange	San Joaquin	SD inland	SD coastal	Shasta	Ventura
Sunset Zone	23	14	21/23	24	9	21
foliage	4.4	5.0	4.4	3.0	3.9	3.2
flower	2.8	5.0	3.2	2.7	3.7	1.4
bloom period	Jan-Apr	Dec-Mar	Jan-Mar	Jan-Feb	Jan-Mar	Jan-Feb
pest tolerance	4.8	5.0	4.7	3.9	4.9	4.8
disease resistance	5.0	5.0	4.8	5.0	4.9	4.7
vigor	4.3	5.0	4.5	3.2	3.5	3.0
overall appearance	4.3	5.0	4.2	2.8	3.9	2.8
MSMTS						
relative PGI	3.3	2.3	0.8	0.8	2.0	1.6
avg ht (cm)	55	47	39	19	46	36
avg wd (cm)	71	68	51	18	46	34
AVG HT (in)	22	18	15	7	18	14
AVG WD (in)	28	27	20	7	18	13