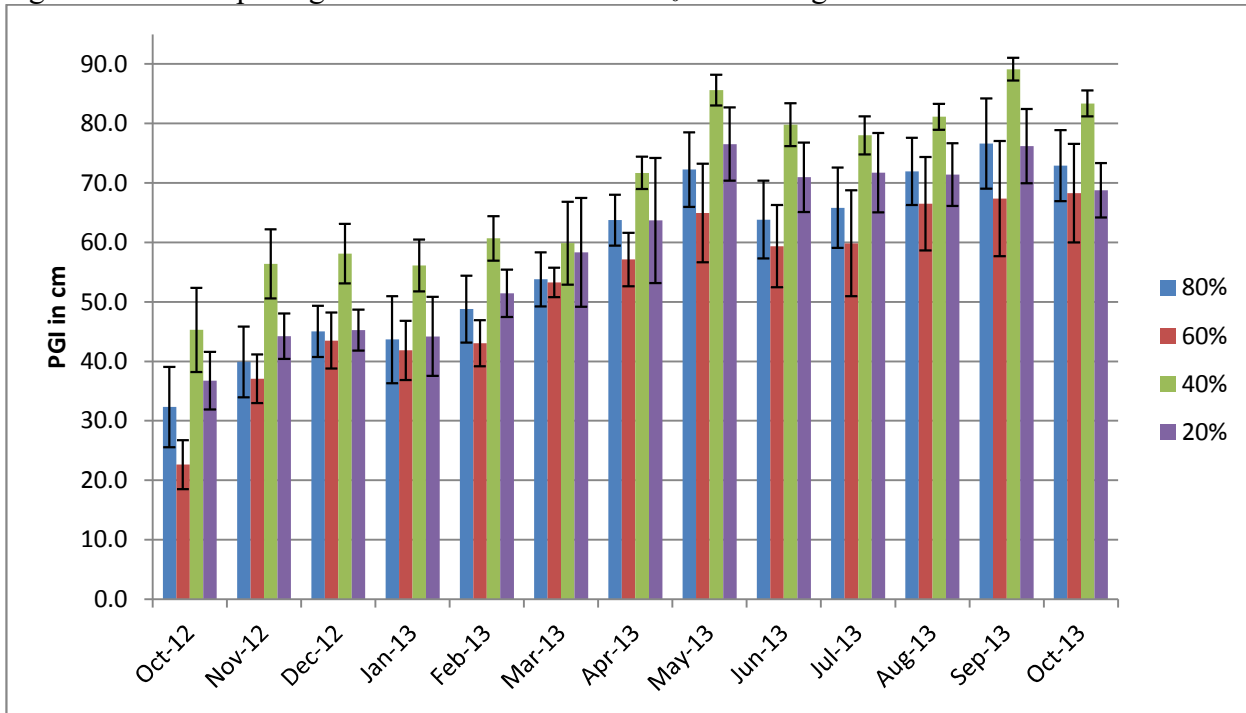


*Festuca californica*

Figure 35a. Mean plant growth index in cm on 4 ET<sub>0</sub>-based irrigation levels



Error bars represent  $\pm$  1 SE

Fig. 35b. Mean relative plant growth index during deficit irrigation on 4 ET<sub>0</sub>-based levels

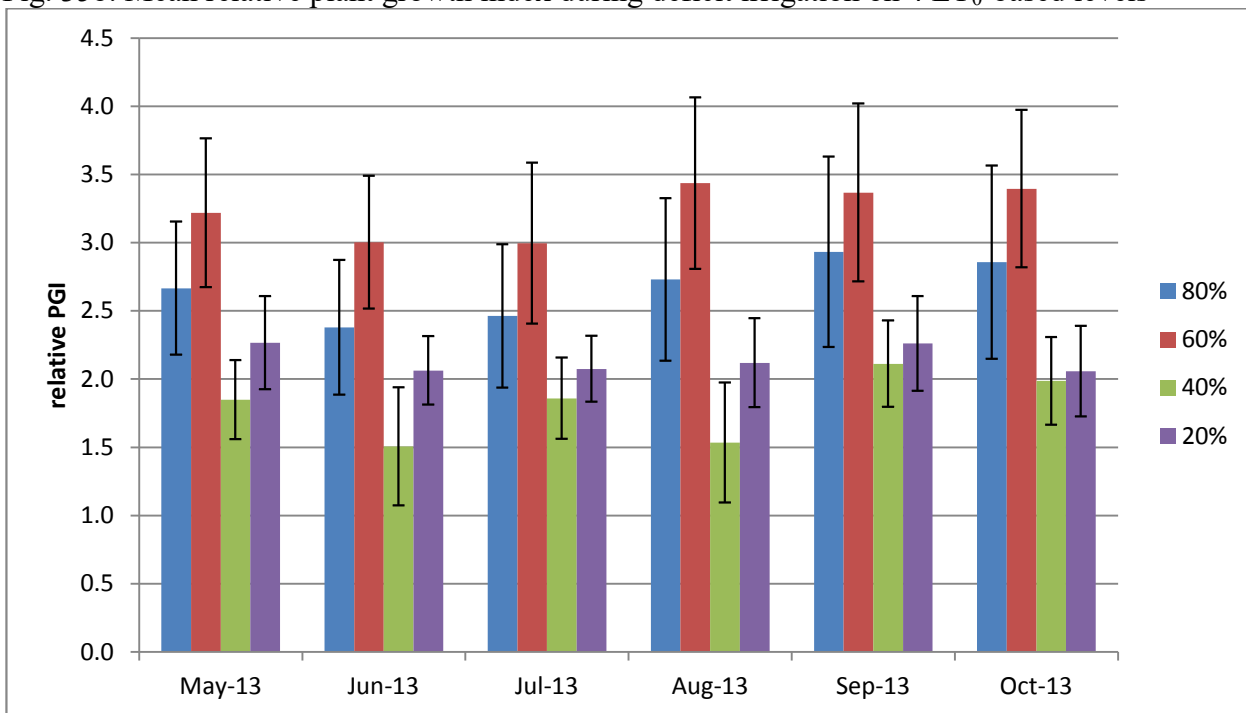


Table 33. Mean quality ratings in 6 categories on 4 ET<sub>0</sub>-based irrigation levels

<i>Festuca californica</i>													
foliage	NOV	DEC	JAN	FEB	MAR	APR	MAY	JUN	JUL	AUG	SEP	OCT	AVG
80%	2.9	3.4	4.5	3.3	3.3	4.3	5.0	5.0	3.8	4.3	4.3	4.4	<b>4.1</b>
60%	2.5	3.3	4.8	3.3	3.4	4.6	4.7	4.7	3.4	4.5	4.3	4.5	<b>4.0</b>
40%	3.1	3.7	5.0	3.8	3.9	4.1	3.7	3.7	4.0	5.0	4.9	4.4	<b>4.1</b>
20%	3.3	3.4	4.7	3.6	4.4	5.0	4.7	4.8	3.9	4.8	4.3	4.3	<b>4.3</b>
<b>flowering</b>													
80%					1.0	2.7	1.7	2.0					<b>1.8</b>
60%					4.0	1.0	2.0	1.0					<b>2.0</b>
40%					4.0	3.3	2.8	2.0					<b>3.0</b>
20%					2.5	2.1	1.8	1.7	3.0	2.0	2.0	1.0	<b>2.0</b>
<b>pest tolerance</b>													
80%	3.0	4.1	5.0	4.3	4.5	5.0	5.0	5.0	5.0	4.3	4.7	4.5	<b>4.5</b>
60%	2.7	3.3	5.0	4.1	4.3	5.0	5.0	5.0	4.7	4.7	4.2	5.0	<b>4.4</b>
40%	3.2	4.0	5.0	4.4	5.0	5.0	5.0	5.0	5.0	5.0	5.0	4.4	<b>4.7</b>
20%	3.7	3.8	5.0	4.7	4.6	5.0	5.0	5.0	5.0	5.0	4.8	5.0	<b>4.7</b>
<b>disease resistance</b>													
80%	5.0	5.0	5.0	5.0	5.0	5.0	5.0	5.0	5.0	5.0	5.0	5.0	<b>5.0</b>
60%	5.0	5.0	5.0	5.0	5.0	5.0	5.0	5.0	5.0	5.0	5.0	5.0	<b>5.0</b>
40%	5.0	5.0	5.0	5.0	5.0	5.0	5.0	5.0	5.0	5.0	5.0	5.0	<b>5.0</b>
20%	5.0	5.0	5.0	5.0	5.0	5.0	5.0	5.0	5.0	5.0	5.0	5.0	<b>5.0</b>
<b>vigor</b>													
80%	3.0	3.4	3.0	3.1	3.5	3.0	3.8	3.8	3.6	4.0	4.1	3.8	<b>3.5</b>
60%	3.0	3.0	2.3	3.0	3.4	3.6	3.4	3.4	3.3	3.6	3.6	3.8	<b>3.3</b>
40%	3.3	3.6	3.8	3.4	3.6	3.8	3.6	3.5	3.9	4.5	4.4	3.7	<b>3.8</b>
20%	3.0	3.4	3.2	3.0	4.0	3.6	4.0	3.9	3.8	4.4	4.1	4.5	<b>3.7</b>
<b>overall appearance</b>													
80%	2.9	3.3	2.8	3.3	3.0	3.4	3.5	3.7	3.5	3.9	4.2	4.3	<b>3.8</b>
60%	2.8	2.9	2.3	3.0	2.9	3.1	3.3	3.1	2.8	3.7	3.9	4.2	<b>3.2</b>
40%	3.1	3.5	3.4	3.6	3.8	4.0	3.8	3.6	3.9	4.8	4.6	4.2	<b>3.8</b>
20%	2.9	3.4	2.8	3.5	3.8	3.5	3.8	3.8	3.5	4.5	4.4	4.6	<b>3.7</b>