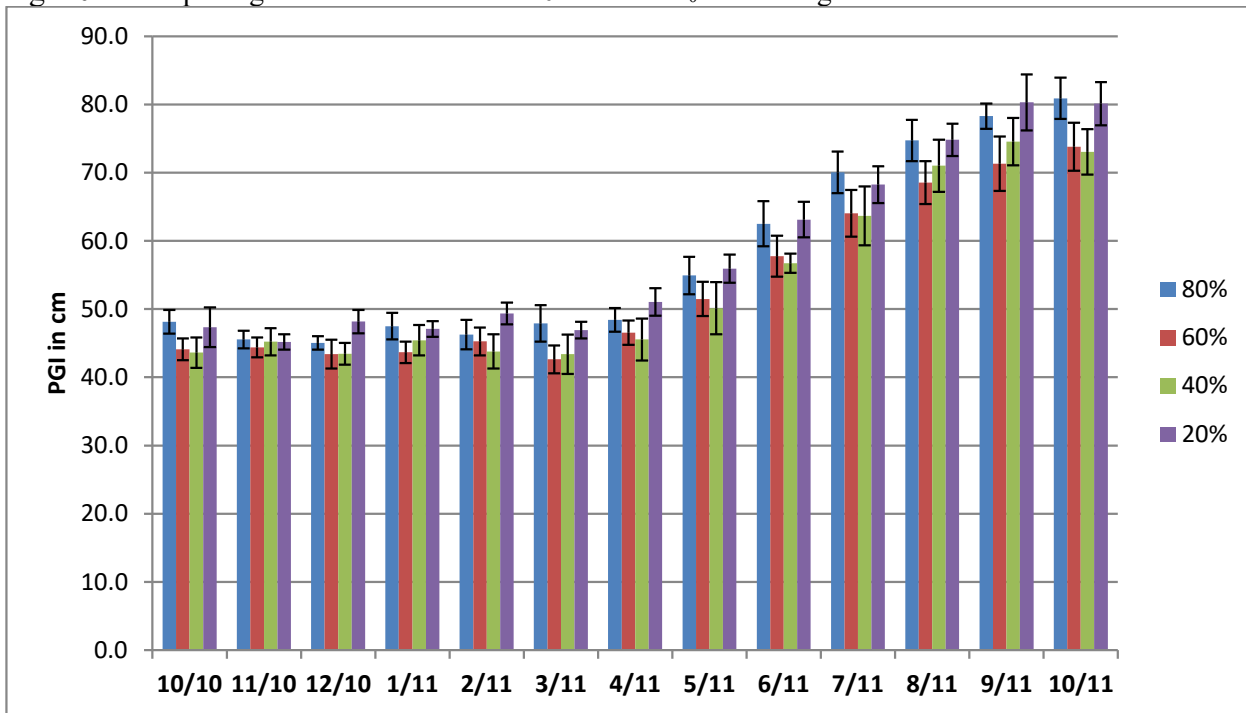


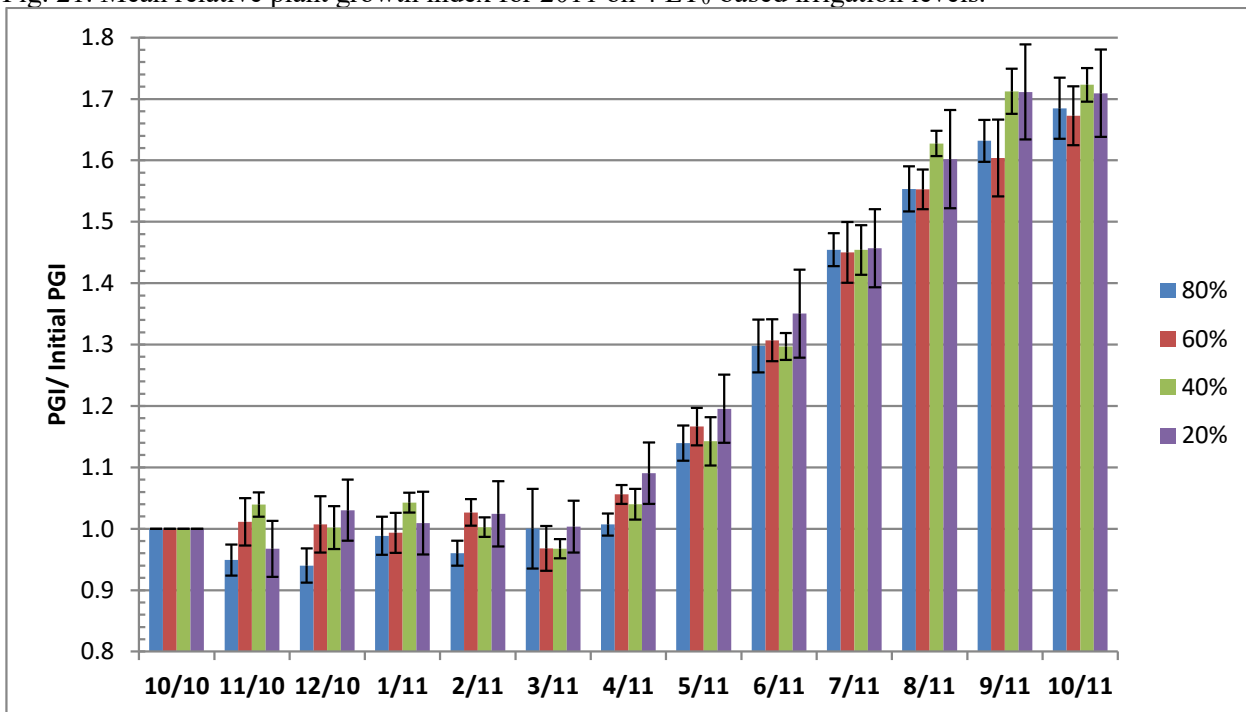
Bulbine ‘Tiny Tangerine’

Fig. 20. Mean plant growth index in cm for 2011 on 4 ET₀-based irrigation levels



Error bars represent ± 1 SE.

Fig. 21. Mean relative plant growth index for 2011 on 4 ET₀-based irrigation levels.



Error bars represent ± 1 SE.

Table 8. Mean quality ratings in 6 categories on 4 ET₀-based irrigation levels Oct. 2010- Oct. 2011

Bulbine 'Tiny Tangerine'													
foliage	OCT	NOV	FEB	MAR	APR	MAY	JUNE	JUL	AUG	SEP	OCT	AVG	
80%	4.4	4.4	3.9	4.0	4.3	4.4	4.0	4.0	4.2	4.2	4.0	4.2	
60%	4.3	4.3	3.9	4.0	4.3	4.1	3.8	3.8	3.7	3.7	3.7	4.0	
40%	4.3	4.4	3.9	3.9	4.3	4.4	4.1	3.9	4.3	4.1	4.0	4.2	
20%	4.6	4.6	3.9	4.0	4.3	4.5	4.0	4.0	4.1	4.0	3.9	4.2	
flowering													
80%	4.5	5.0	1.0	1.3	3.3	4.8	3.9		3.7	4.8	3.6	3.6	
60%	4.0	4.8	1.0	1.0	2.2	4.6	4.0		3.0	3.8	3.0	3.1	
40%	4.8	4.8		1.0	2.5	5.0	3.8		3.7	4.4	3.6	3.7	
20%	4.8	5.0		1.0	2.3	5.0	4.6		3.5	4.9	3.3	3.8	
pest res.													
80%	5.0	5.0	5.0	5.0	5.0	5.0	5.0	5.0	5.0	5.0	5.0	5.0	
60%	5.0	5.0	4.8	5.0	5.0	5.0	5.0	5.0	5.0	5.0	5.0	5.0	
40%	5.0	5.0	5.0	5.0	5.0	5.0	5.0	5.0	5.0	5.0	5.0	5.0	
20%	5.0	5.0	4.8	5.0	5.0	5.0	5.0	5.0	5.0	5.0	4.8	5.0	
disease res.													
80%	5.0	5.0	4.1	4.2	4.1	4.6	4.1	5.0	4.1	4.3	4.0	4.4	
60%	5.0	5.0	3.8	4.0	4.4	4.1	3.9	5.0	3.7	3.8	3.7	4.2	
40%	5.0	5.0	3.8	4.0	4.3	4.6	4.1	5.0	4.5	4.1	4.0	4.4	
20%	5.0	5.0	4.2	4.0	4.3	4.5	4.0	5.0	4.1	4.2	3.9	4.4	
vigor													
80%	4.7	4.8	4.5	4.8	4.7	4.7	4.7	4.2	4.7	4.7	5.0	4.7	
60%	4.4	4.8	4.5	4.7	4.5	4.5	4.3	4.1	4.3	4.3	4.2	4.4	
40%	4.7	4.7	4.3	5.0	4.5	4.8	4.5	3.8	4.5	4.3	4.7	4.5	
20%	4.7	4.8	4.8	5.0	4.8	4.8	5.0	4.4	4.8	5.0	5.0	4.8	
overall app.													
80%	4.7	5.0	4.2	4.2	4.3	4.8	4.5	4.2	4.4	5.0	4.5	4.5	
60%	4.3	4.9	4.0	4.2	4.4	4.3	4.3	4.0	3.8	4.1	3.9	4.2	
40%	4.8	4.8	4.0	4.3	4.4	4.9	4.5	4.0	4.6	4.6	4.8	4.5	
20%	4.8	4.9	4.1	4.3	4.4	4.9	4.9	4.3	4.3	5.0	4.5	4.6	

Table 9. Master Gardener quality average annual quality ratings for *Bulbine* 'Tiny Tangerine'

Bulbine 'Tiny Tangerine' average quality ratings over 2 years in 8 counties								
COUNTY	Alameda	Nevada	Orange	Riverside	Santa Clara	SD-inland	SD-coastal	Shasta
Sunset Zone	14	7	23	18/19	15	22	24	9
Foliage	4.8	4.3	4.3	4.6	3.9	4.7	4.1	3.0
Flowering	3.9	3.6	3.5	4.2	3.5	2.9	2.6	2.0
Insect Tol.	5.0	5.0	5.0	5.0	5.0	5.0	5.0	5.0
Disease Res.	5.0	5.0	5.0	5.0	5.0	5.0	5.0	5.0
Vigor	4.9	4.7	4.4	4.6	4.3	5.0	4.4	3.0
AVERAGE	4.7	4.5	4.4	4.7	4.4	4.5	4.2	3.6
Flowering period/highest rating	all but July/ 5.0	May-Nov/ 5.0	Feb-Nov/ 5.0	all year/ 5.0	all year/ 5.0	all but Feb./ 5.0	all year/ 4.3	Apr - Nov/ 3.0