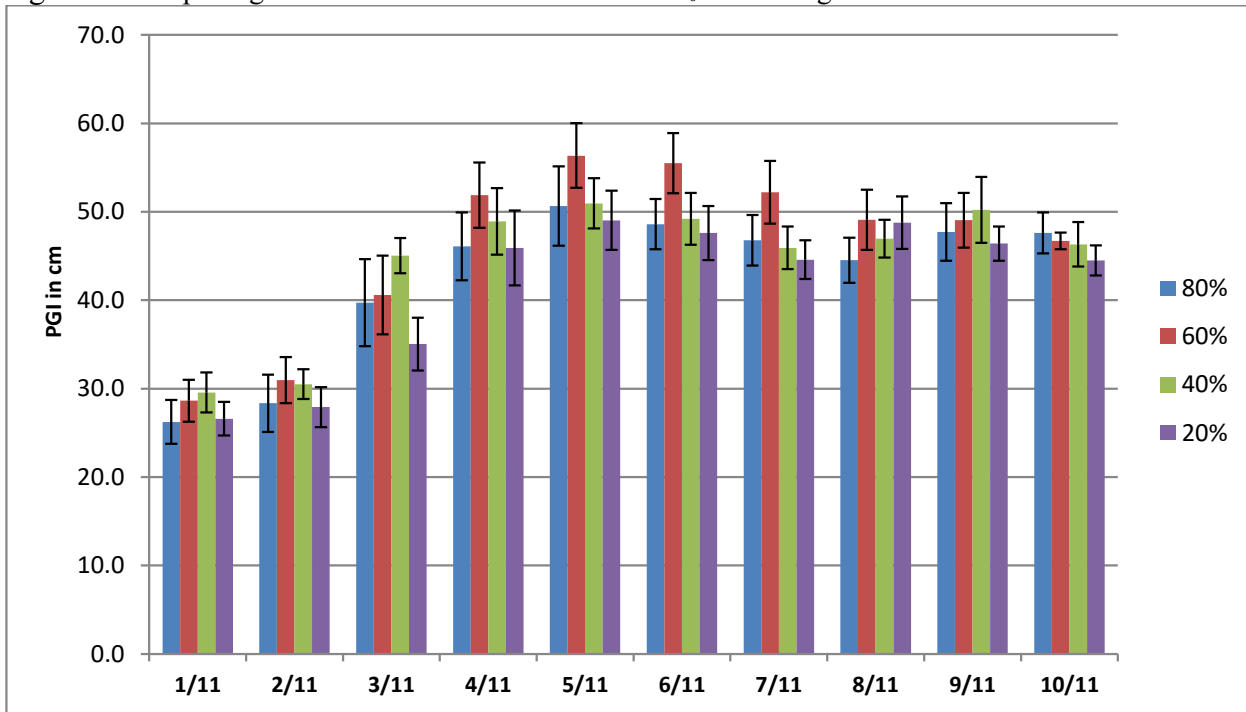


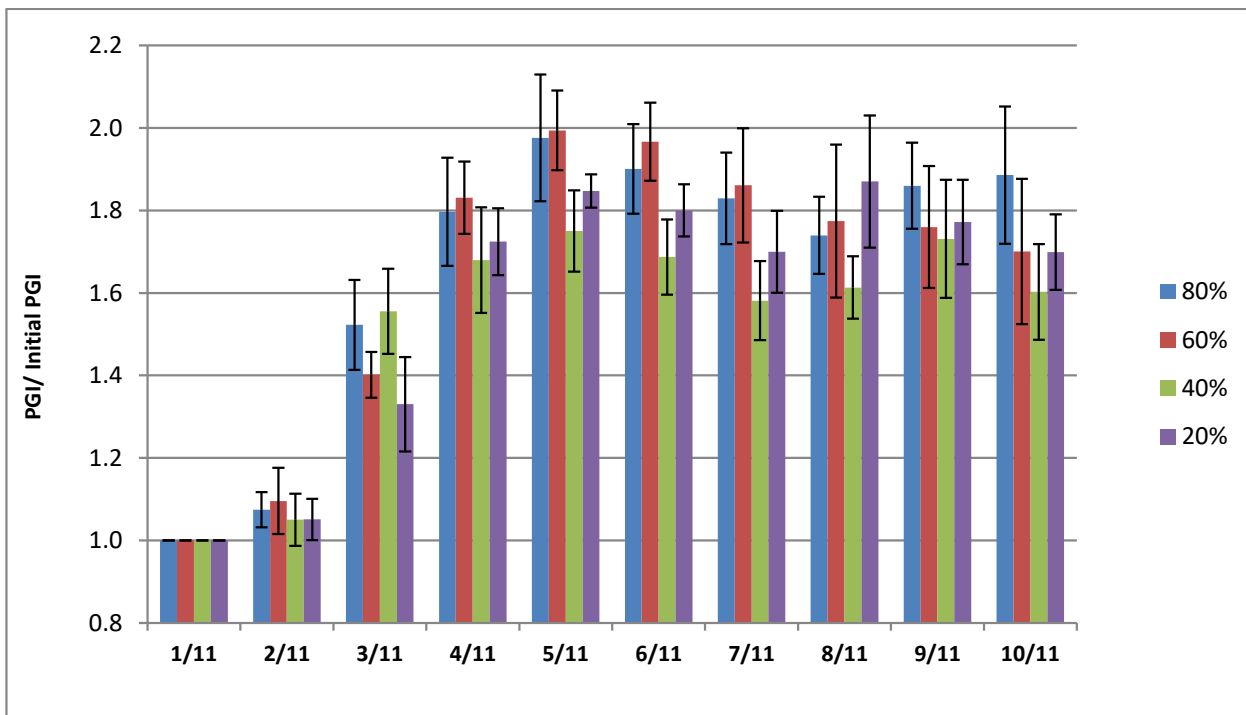
SHADE- Arboretum All Stars
***Helleborus* 'Red Lady'**

Fig. 34. Mean plant growth index in cm for 2011 on 4 ET₀-based irrigation levels



Error bars represent ± 1 SE

Fig. 35. Mean relative plant growth index for 2011 on 4 ET₀-based irrigation levels



Error bars represent ± 1 SE

Table 17. Mean quality ratings in 6 categories on 4 ET₀-based irrigation levels during 2011

Hellebore 'Red Lady'											
foliage	JAN	FEB	MAR	APRIL	MAY	JUNE	JULY	AUG	SEP	OCT	AVG
80%	3.3	2.7	2.9	3.2	3.7	3.5	3.2	3.7	3.7	3.3	3.3
60%	2.4	2.5	2.9	3.3	3.7	3.6	3.2	3.7	3.4	3.6	3.2
40%	2.5	2.2	2.3	3.0	3.5	3.7	3.1	3.8	3.7	3.4	3.1
20%	2.6	2.4	2.6	3.3	3.5	3.5	3.1	3.9	3.6	3.5	3.2
flowering											
80%		2.0	2.7	3.5	1.0						2.3
60%		2.0	3.8	3.7	1.3						2.7
40%		1.8	4.3	3.0	1.0						2.5
20%		2.0	2.8	2.3	1.0						2.0
pest tolerance											
80%	3.0	2.5	2.7	3.2	3.8	4.2		3.7	4.0	3.7	3.4
60%	3.0	2.3	2.7	2.8	4.0	3.9		3.6	3.7	4.0	3.3
40%	2.4	2.2	2.2	2.9	3.4	3.8		3.8	3.9	4.0	3.2
20%	2.7	2.5	3.0	3.0	3.6	3.7		3.8	4.2	3.8	3.4
disease resistance											
80%	3.2	3.0	3.0	3.3	4.0	3.4		4.1	3.7	3.3	3.4
60%	2.5	3.2	3.0	3.8	3.5	3.3		3.8	3.5	3.6	3.4
40%	2.3	2.7	3.1	3.2	3.4	4.1		3.7	3.7	3.3	3.3
20%	2.8	2.3	3.0	3.3	3.6	4.0		4.2	3.5	3.9	3.4
vigor											
80%	3.2	3.1	3.1	3.2	4.6	4.3	3.6	4.0	4.2	3.9	3.7
60%	2.8	2.9	3.2	4.0	4.5	4.6	3.6	4.5	3.8	4.2	3.8
40%	2.8	2.8	3.5	3.5	3.9	4.3	3.8	4.5	3.8	4.2	3.7
20%	2.9	2.8	2.9	3.3	4.4	4.1	3.4	3.8	3.8	4.0	3.5
overall appearance											
80%	2.9	2.8	3.0	3.3	3.8	3.7	3.2	3.9	3.7	3.3	3.4
60%	2.6	2.7	3.2	3.8	3.8	3.8	3.3	3.8	3.3	3.8	3.4
40%	2.4	2.5	3.3	3.4	3.5	3.9	3.3	3.9	3.6	3.6	3.3
20%	2.8	2.6	2.7	3.1	3.6	3.7	3.2	3.8	3.8	3.7	3.3

Table 18. Master Gardener quality average annual quality ratings for *Helleborus* 'Red Lady'

Hellebore 'Red Lady' Average Quality Ratings over 2 years in 6 Counties						
COUNTY	Nevada	Orange	Riverside	Santa Clara	SD- coastal	Shasta
Sunset Zone	7	23	18/19	15	24	9
Foliage	3.8	3.2	2.5	3.3	3.7	3.5
Flowers	4.0	2.5	1.2	2.6	2.5	3.3
Ins. Tol.	4.3	4.5	4.2	3.3	4.5	3.7
Disease Res.	4.9	4.8	4.7	4.9	4.9	4.9
Vigor	4.0	3.3	2.5	3.7	3.8	3.5
Overall avg.	4.2	3.7	3.2	3.5	3.9	3.8
Flowering period/ highest rating	Mar- July/ 4.8	Jan- June/ 4.5	Feb- may/ 2.0	Dec- Aug/ 4.7	Jan- June/ 4.6	Jan- May/ 4.6