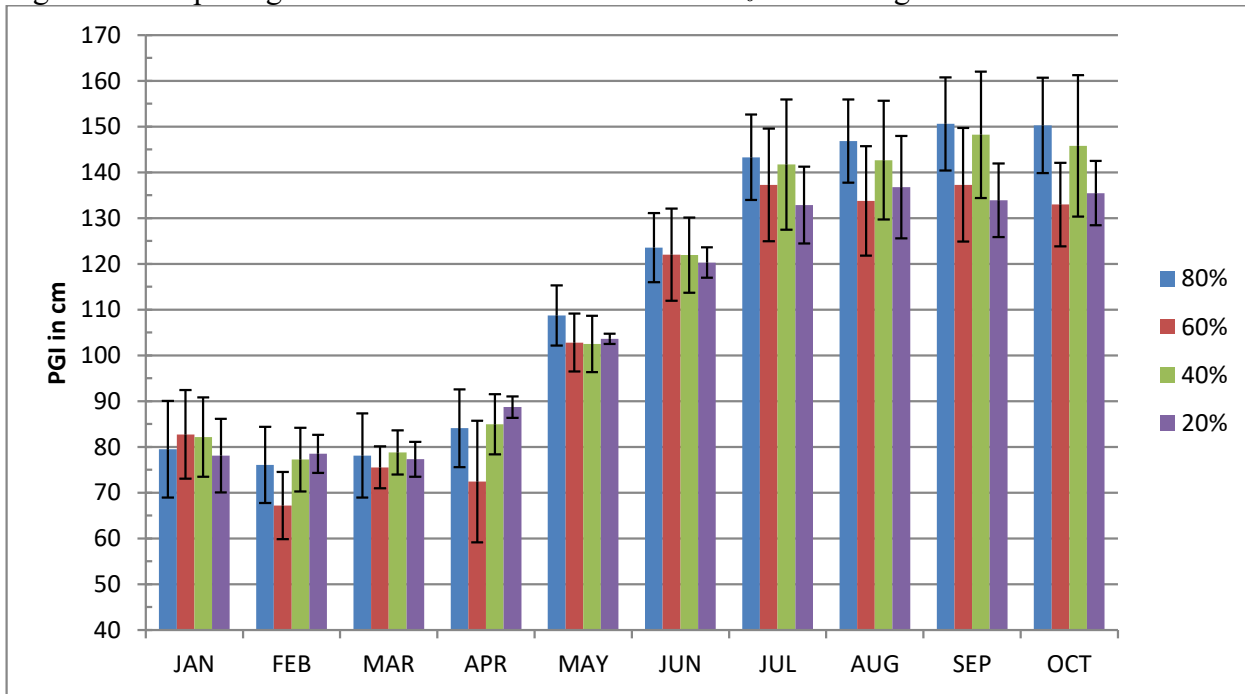


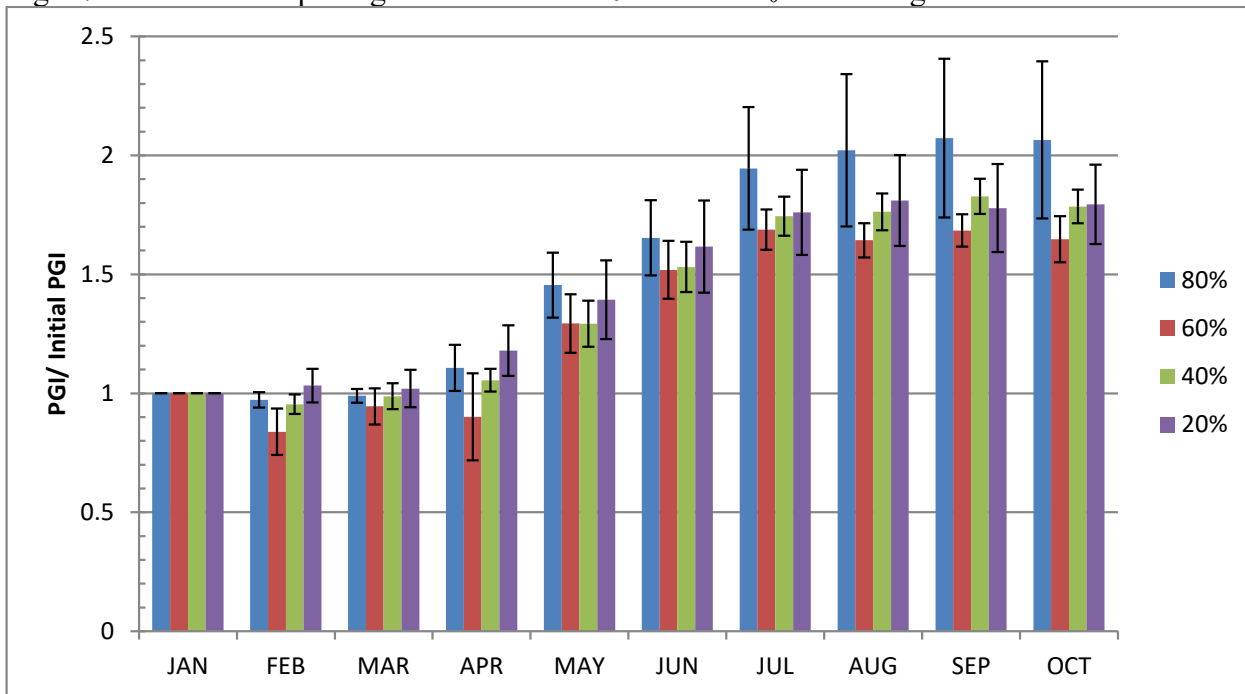
***Hypericum* 'Red Ignite'**

Fig. 46. Mean plant growth index in cm for 2011 on 4 ET₀- based irrigation levels



Error bars represent ± 1 SE.

Fig. 47. Mean relative plant growth index for 2011 on 4 ET₀-based irrigation levels



Error bars represent ± 1 SE.

Table 28. 2010-2011 Mean quality ratings in 6 categories on 4 ET₀-based irrigation levels

<i>Hypericum 'Ignite Red'</i>											
foliage	JAN	FEB	MAR	APR	MAY	JUN	JUL	AUG	SEP	OCT	AVG
80%	4.0	3.7	4.0	4.0	4.2	4.3	3.8	4.3	4.2	4.1	4.1
60%	4.0	3.9	3.6	3.9	4.2	4.5	4.0	4.0	4.8	4.4	4.1
40%	3.8	3.7	3.4	4.0	4.2	4.4	3.9	4.6	4.3	4.2	4.1
20%	4.4	3.8	3.8	4.0	4.4	4.7	3.9	4.8	4.3	4.5	4.3
flowering											
80%	2.5				2.8	2.4	2.9	2.0	2.5	1.5	2.4
60%	2.0				2.9	1.9	2.7	1.6	1.5	1.0	1.9
40%	2.0				2.2	2.6	3.3	2.0	2.0	1.0	2.1
20%	1.3				3.3	2.4	2.9	2.0	1.0	1.0	2.0
pest resistance											
80%	4.7	4.5	3.8	4.8	4.5	4.9		4.5	4.8	4.8	4.6
60%	4.8	4.6	4.2	4.5	4.8	5.0		4.8	5.0	4.8	4.7
40%	4.9	4.5	3.7	4.8	5.0	4.9		5.0	5.0	5.0	4.8
20%	4.7	4.4	4.2	5.0	4.8	4.7		4.8	4.8	5.0	4.7
disease resistance											
80%	3.9	3.7	3.5	4.0	4.0	4.6		4.3	4.2	4.1	4.0
60%	4.2	3.7	3.6	3.6	4.4	4.5		4.0	4.8	4.4	4.1
40%	3.8	3.3	3.3	4.0	3.8	4.4		4.6	4.3	4.2	4.0
20%	4.5	4.0	3.8	3.6	4.4	4.8		4.8	4.3	4.5	4.3
vigor											
80%	4.5	4.5	4.5	4.7	4.7	4.8	4.3	5.0	4.6	4.5	4.6
60%	4.8	4.7	4.6	4.6	4.8	5.0	4.4	4.5	4.6	4.6	4.7
40%	4.6	4.7	4.7	4.7	4.5	4.7	4.7	4.7	4.5	4.6	4.6
20%	4.4	4.7	4.8	4.8	4.9	4.9	4.5	5.0	4.4	4.4	4.7
overall appearance											
80%	4.1	3.8	3.7	4.0	4.3	4.5	3.9	4.5	4.1	3.8	4.1
60%	4.0	4.0	3.8	3.8	4.3	4.5	4.0	4.0	4.1	3.9	4.0
40%	3.9	3.7	3.7	3.6	4.1	4.4	3.9	4.3	4.3	3.8	4.0
20%	4.3	4.0	3.8	3.9	4.4	4.9	4.0	4.7	4.3	3.9	4.2