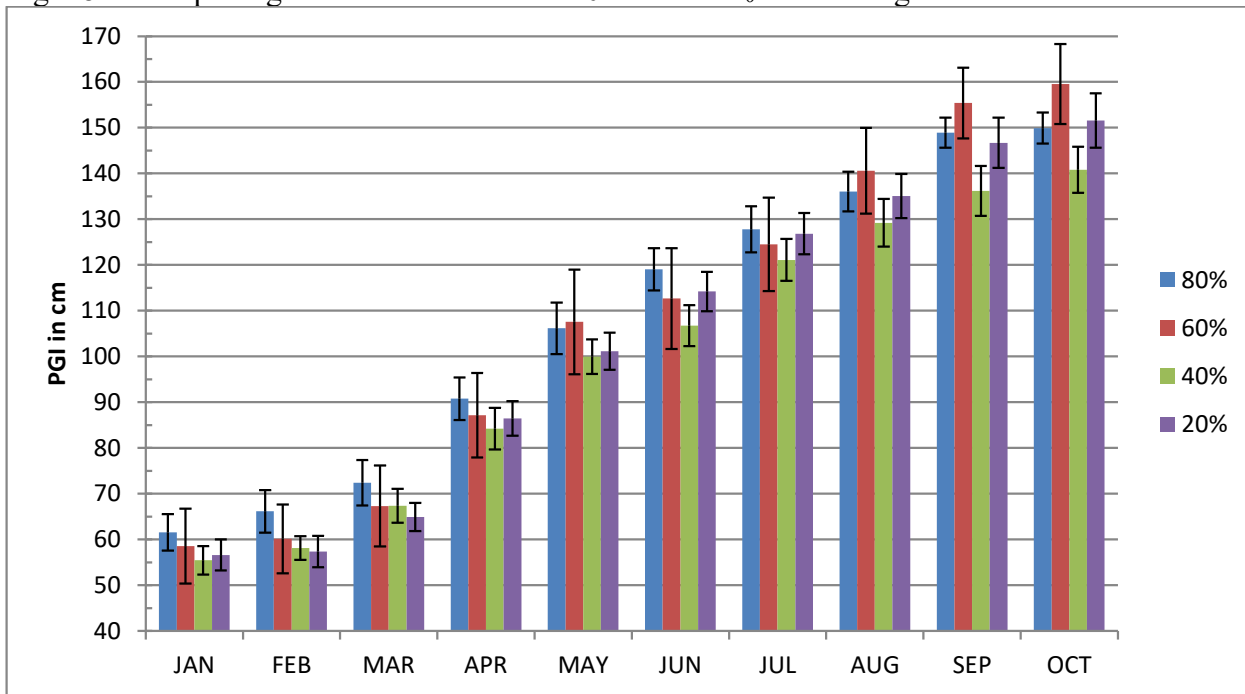


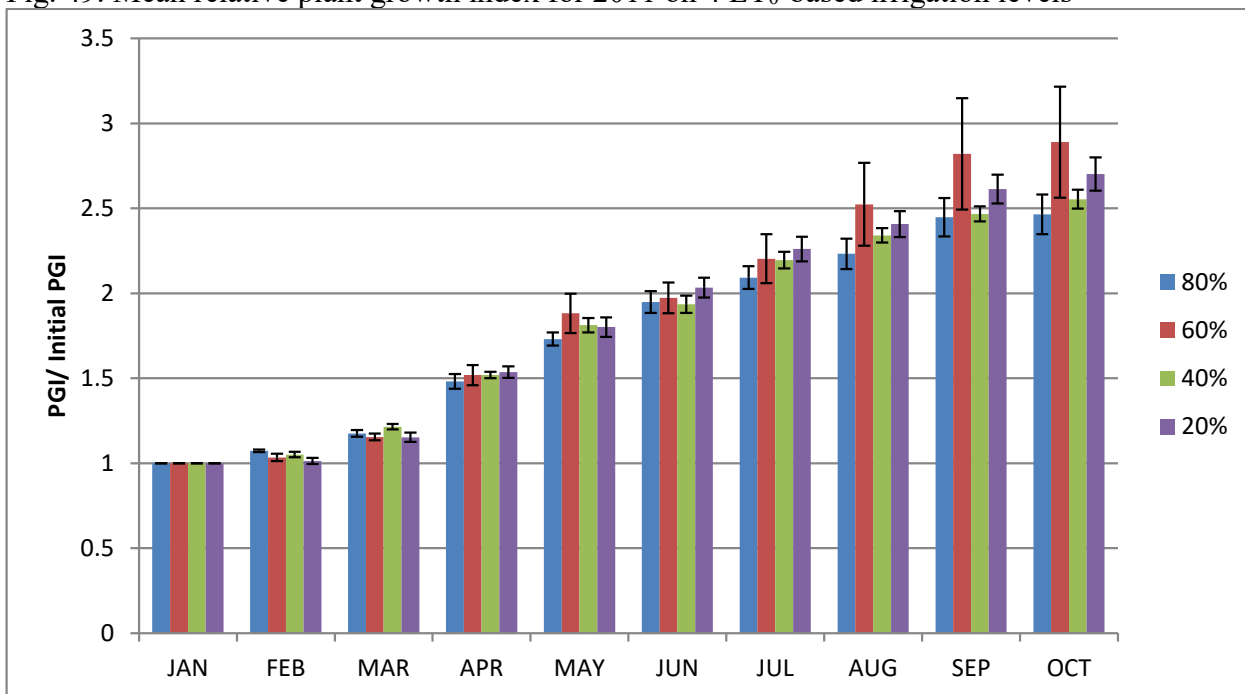
***Ligustrum* 'Sunshine'**

Fig. 48. Mean plant growth index in cm for 2011 on 4 ET₀-based irrigation levels



Error bars represent ± 1 SE.

Fig. 49. Mean relative plant growth index for 2011 on 4 ET₀-based irrigation levels



Error bars represent ± 1 SE.

Table 29. 2010-2011 Mean quality ratings in 6 categories on 4 ET₀-based irrigation levels

<i>Ligustrum sinense</i> 'Sunshine'											
foliage	JAN	FEB	MAR	APR	MAY	JUN	JUL	AUG	SEP	OCT	AVG
80%	5.0	5.0	5.0	5.0	5.0	5.0	4.0	4.9	5.0	5.0	4.9
60%	5.0	5.0	5.0	5.0	4.8	5.0	4.0	5.0	4.9	5.0	4.9
40%	4.7	5.0	5.0	5.0	4.9	5.0	4.1	5.0	4.9	5.0	4.9
20%	4.7	4.8	5.0	5.0	5.0	5.0	4.3	5.0	5.0	5.0	4.9
pest resistance											
80%	5.0	5.0	5.0	5.0	5.0	5.0		5.0	5.0	5.0	5.0
60%	5.0	5.0	5.0	5.0	5.0	5.0		5.0	5.0	5.0	5.0
40%	4.7	5.0	5.0	5.0	5.0	5.0		5.0	5.0	5.0	5.0
20%	5.0	4.8	5.0	5.0	5.0	5.0		5.0	5.0	5.0	5.0
disease resistance											
80%	5.0	5.0	5.0	5.0	5.0	5.0		4.9	5.0	5.0	5.0
60%	5.0	5.0	5.0	5.0	4.8	5.0		5.0	4.9	5.0	5.0
40%	4.7	5.0	5.0	5.0	5.0	5.0		5.0	4.9	5.0	5.0
20%	4.8	5.0	5.0	5.0	5.0	5.0		5.0	5.0	5.0	5.0
vigor											
80%	4.6	4.6	4.6	4.8	4.8	4.5	4.1	4.8	4.8	4.4	4.6
60%	4.3	4.7	4.6	4.8	4.7	4.8	4.3	4.8	4.8	4.9	4.7
40%	4.3	4.2	4.5	4.7	4.5	4.5	4.0	4.3	4.5	3.8	4.3
20%	3.8	4.3	4.3	4.8	4.8	4.3	4.0	4.3	4.7	4.3	4.4
overall appearance											
80%	4.8	5.0	5.0	5.0	5.0	5.0	4.1	5.0	5.0	5.0	4.9
60%	4.7	4.9	4.9	5.0	4.8	5.0	4.2	5.0	5.0	5.0	4.9
40%	4.5	4.7	4.8	5.0	4.9	5.0	3.8	5.0	5.0	5.0	4.8
20%	4.3	4.8	4.8	5.0	5.0	5.0	4.2	5.0	5.0	5.0	4.8