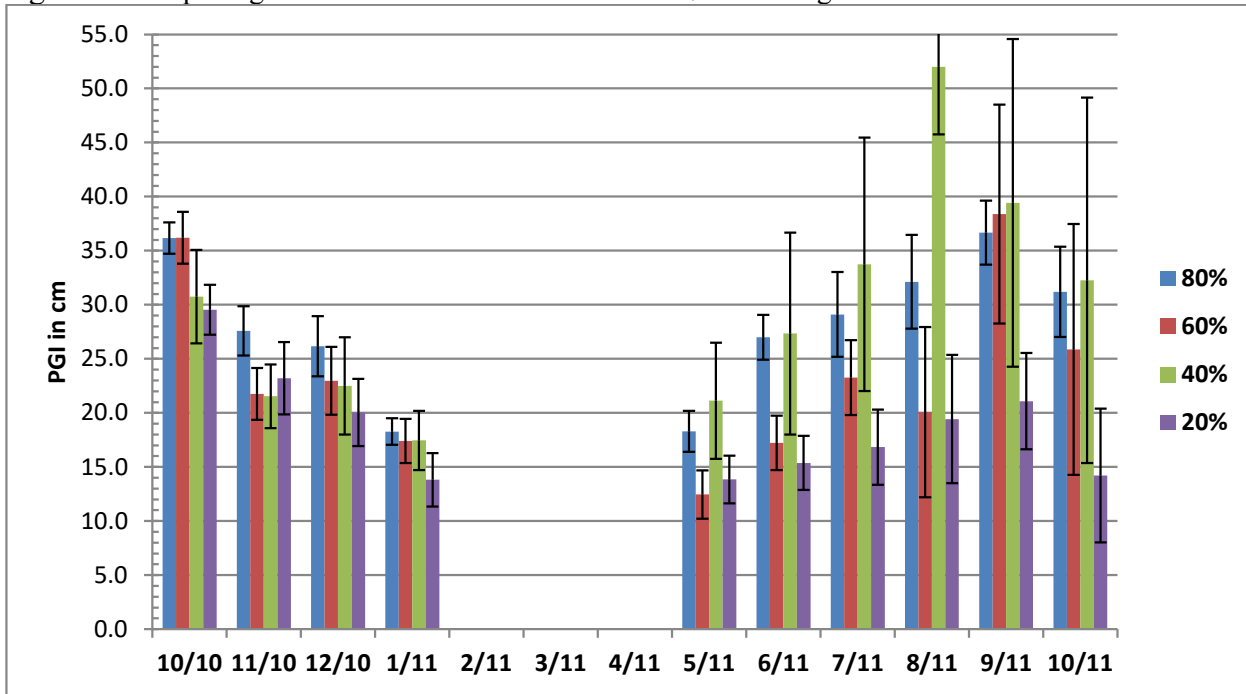


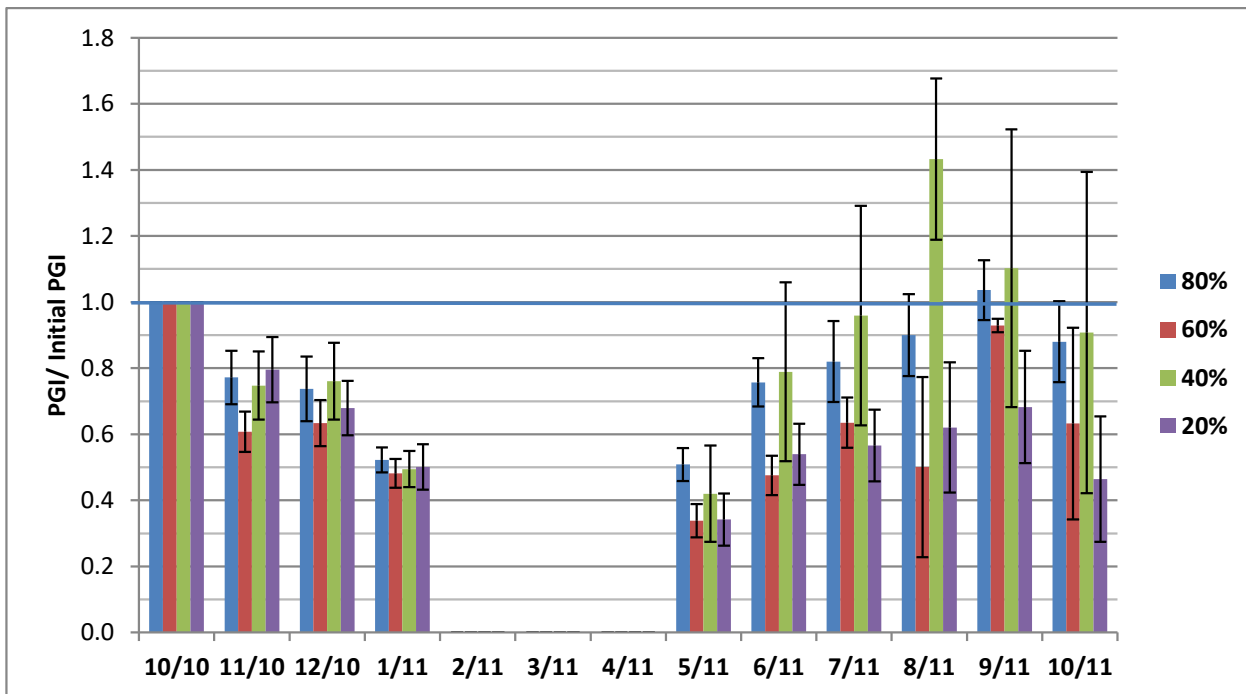
***Lomandra* 'Seascape'**

Fig. 30. Mean plant growth index in cm for 2011 on 4 ET₀-based irrigation levels



Error bars represent ± 1 SE.

Fig. 31. Mean relative plant growth index for 2011 on 4 ET₀-based irrigation levels



Error bars represent ± 1 SE.

Table 15. Mean quality ratings in 6 categories on 4 ET₀-based irrigation levels during 2011

<i>Lomandra 'Seascape'</i>										
foliage	SEPT	OCT	APR	MAY	JUN	JUL	AUG	SEP	OCT	AVG
80%	3.6	4.0	2.4	3.6	3.7	3.6	3.7	4.2	4.3	3.7
60%	3.2	3.9	2.0	2.3	3.2	3.3	2.5	3.0	4.0	3.0
40%	3.2	3.0	2.0	2.2	3.7	4.0	4.0	4.3	4.0	3.4
20%	2.9	3.1	2.3	3.0	3.4	3.5	2.4	3.0	3.0	2.9
flowering										
80%										
60%							1.0	4.0		2.5
40%							1.0		1.0	1.0
20%	3.7				5.0					4.4
pest tolerance										
80%	5.0	4.7	5.0	4.5	5.0	5.0	4.5	5.0	5.0	4.9
60%	4.5	4.8	5.0	5.0	5.0	4.8	2.8	4.5	5.0	4.6
40%	5.0	4.0	5.0	4.4	5.0	5.0	5.0	5.0	5.0	4.8
20%	5.0	4.5	5.0	5.0	4.9	5.0	2.6	5.0	5.0	4.7
disease resistance										
80%	5.0	5.0	5.0	3.6	3.6	5.0	3.7	5.0	4.3	4.5
60%	4.7	5.0	5.0	2.3	3.2	5.0	2.8	4.5	4.0	4.1
40%	5.0	5.0	5.0	2.2	3.7	5.0	4.0	5.0	4.0	4.3
20%	4.6	5.0	5.0	3.3	3.6	5.0	2.4	5.0	4.3	4.2
vigor										
80%	3.3	3.8	2.4	2.8	2.8	3.3	3.7	4.2	3.9	3.4
60%	3.1	3.7	2.0	2.0	2.1	2.9	2.3	3.0	4.0	2.8
40%	2.9	3.2	2.0	2.0	3.3	3.2	4.5	4.0	4.0	3.2
20%	2.6	2.8	2.3	2.3	3.0	3.0	2.0	2.3	2.0	2.5
overall appearance										
80%	3.5	3.8	2.4	3.0	3.1	3.6	3.7	4.2	3.9	3.5
60%	3.2	3.8	2.0	2.2	2.5	3.2	2.4	3.2	4.0	2.9
40%	3.0	2.9	2.0	2.1	3.2	3.3	4.3	4.3	4.0	3.2
20%	2.7	2.8	2.3	2.5	3.3	3.0	2.2	2.5	2.2	2.6