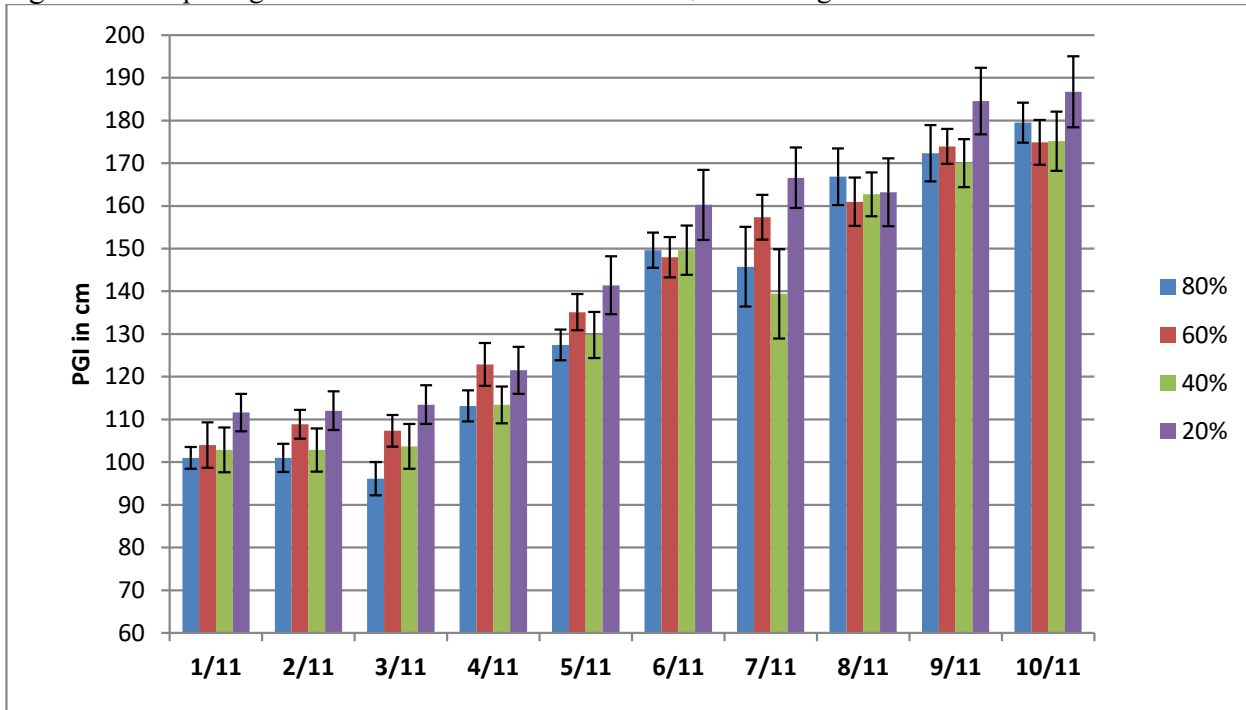


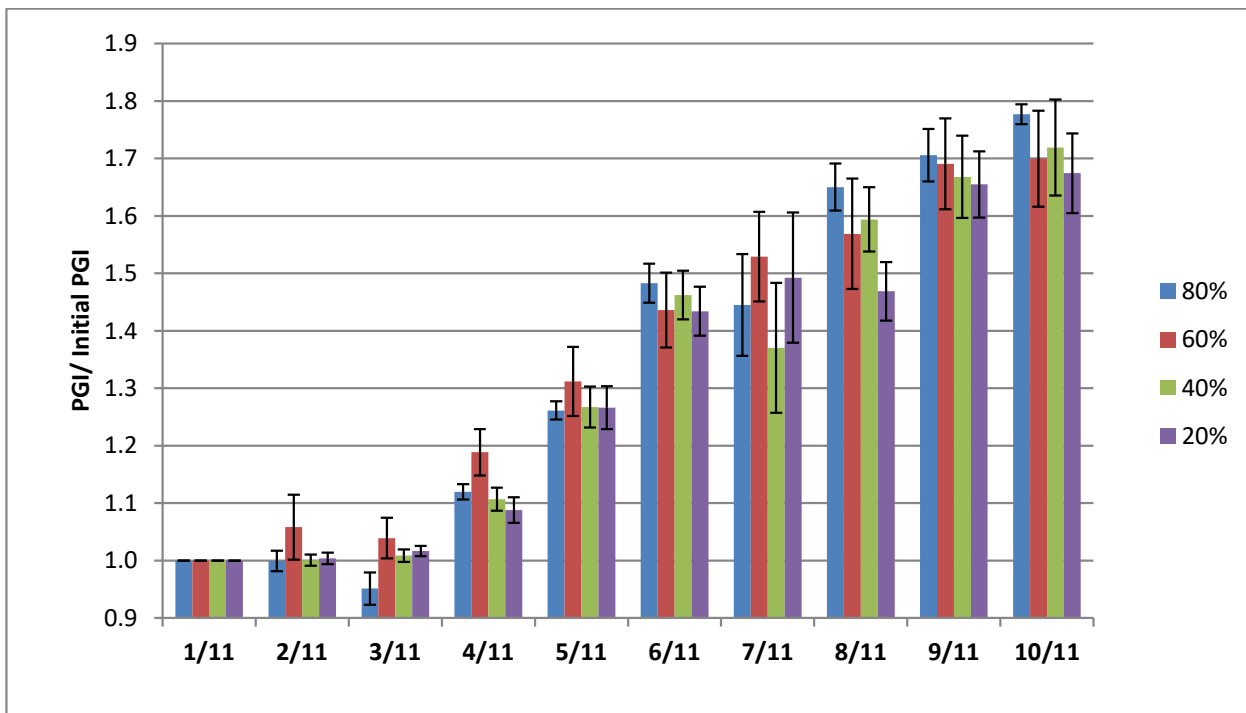
Ribes viburnifolium

Fig. 40. Mean plant growth index in cm for 2011 on 4 ET₀-based irrigation levels



Error bars represent ± 1 SE

Fig. 41. Mean relative plant growth index for 2011 on 4 ET₀-based irrigation levels



Error bars represent ± 1 SE

Table 23. Mean quality ratings in 6 categories on 4 ET₀-based irrigation levels during 2011

Ribes viburnifolium											
foliage	JAN	FEB	MAR	APRIL	MAY	JUNE	JULY	AUG	SEP	OCT	AVG
80%	5.0	5.0	5.0	5.0	4.5	4.4	3.8	4.6	4.8	4.9	4.7
60%	4.7	5.0	5.0	5.0	4.8	4.8	4.2	5.0	4.8	4.8	4.8
40%	4.6	5.0	5.0	5.0	4.8	4.9	4.1	4.7	4.8	4.9	4.8
20%	4.8	5.0	5.0	5.0	4.7	4.9	4.3	4.5	4.8	4.8	4.8
pest tolerance											
80%	5.0	5.0	5.0	5.0	4.8	4.8		5.0	5.0	5.0	5.0
60%	5.0	5.0	5.0	5.0	5.0	5.0		5.0	5.0	5.0	5.0
40%	4.8	5.0	5.0	5.0	5.0	5.0		5.0	5.0	5.0	5.0
20%	5.0	5.0	5.0	5.0	5.0	5.0		5.0	5.0	5.0	5.0
disease resistance											
80%	5.0	5.0	5.0	5.0	4.5	4.4		4.5	4.7	4.9	4.8
60%	4.8	5.0	5.0	5.0	4.8	4.8		5.0	4.8	4.8	4.9
40%	4.8	5.0	5.0	5.0	4.8	4.9		4.7	4.8	4.9	4.9
20%	4.8	5.0	5.0	5.0	4.7	4.9		4.5	4.8	4.8	4.8
vigor											
80%	4.7	4.7	4.8	4.8	5.0	5.0	4.2	5.0	5.0	5.0	4.8
60%	5.0	5.0	4.8	5.0	5.0	5.0	4.3	5.0	5.0	5.0	4.9
40%	4.9	4.3	4.7	4.8	5.0	4.9	4.2	5.0	5.0	5.0	4.8
20%	4.8	4.8	4.7	5.0	4.8	5.0	4.6	5.0	4.8	5.0	4.9
overall appearance											
80%	5.0	5.0	5.0	5.0	4.8	4.8	4.3	4.8	4.9	5.0	4.9
60%	4.7	5.0	4.9	5.0	4.8	4.9	4.4	5.0	4.9	4.8	4.9
40%	4.8	5.0	5.0	5.0	5.0	4.9	4.2	5.0	5.0	5.0	4.9
20%	4.8	4.9	4.9	5.0	4.9	5.0	4.3	4.9	4.9	5.0	4.9

Table 24. Master Gardener average annual ratings for *Ribes viburnifolium*

Ribes viburnifolium Quality Ratings in 10 Counties 2010 - 2011											
COUNTY	Alameda	Fresno	LA	Mariposa	Orange	Riverside	San Joaquin	Santa Clara	SD-coastal	Shasta	
Sunset Zone	9	8	20/21	7	23	18/19	14	15	24	9	
Foliage	4.3	4.3	4.6	3.8	4.6	3.4	4.3	4.0	4.4	3.3	
Flowering	2.0	2.5	3.1		3.5		1.0	1.0	3.0	2.0	
Insect Tol.	5.0	4.5	4.7	5.0	5.0	4.8	5.0	4.1	4.3	4.9	
Disease Res.	5.0	5.0	4.9	5.0	5.0	5.0	5.0	4.9	4.7	4.9	
Vibor	3.8	4.3	4.8	3.9	4.5	3.4	4.1	4.0	4.5	3.3	
Overall avg.	4.5	4.5	4.8	4.4	4.8	4.1	4.6	4.3	4.5	4.1	
Bloom period/highest rating	Feb/ 2.0	Feb-Mar/ 4.0	Jan-Mar/ 4.0	did not bloom	Dec-Mar/ 5.0	did not bloom	April/ 1.0	Mar-Apr/ 1.0	Jan/ 3.0	Feb-Apr/ 2.0	