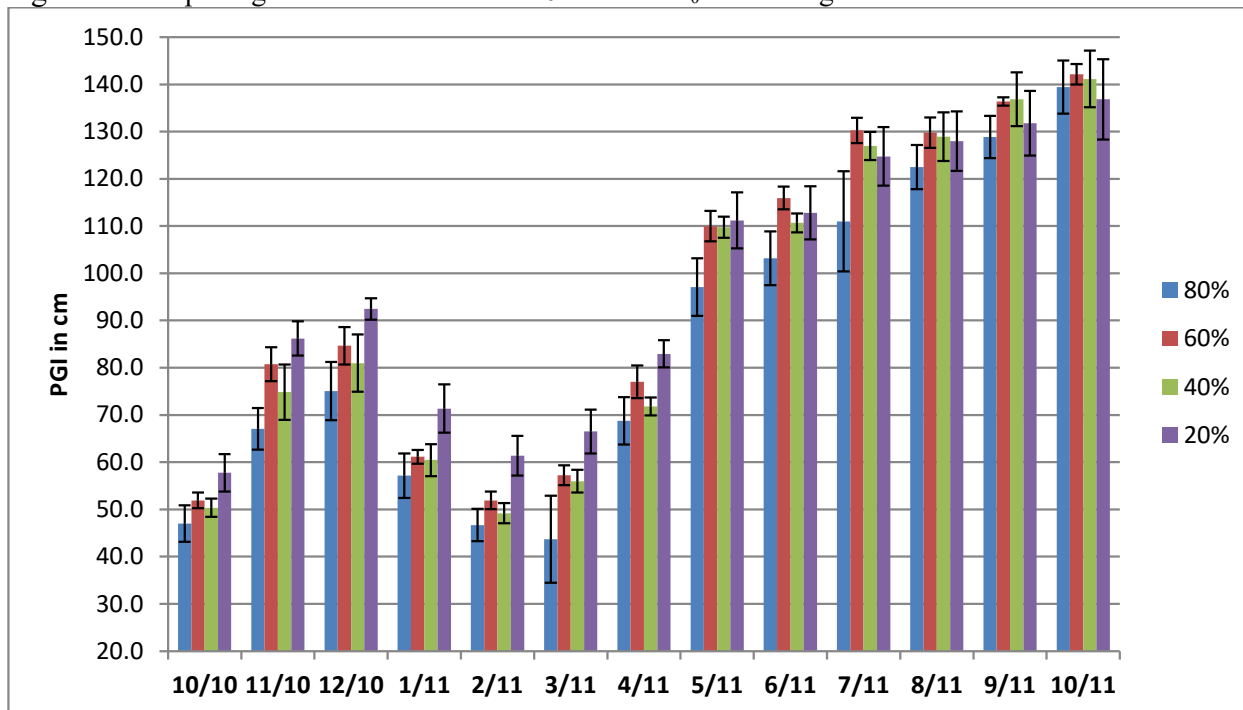


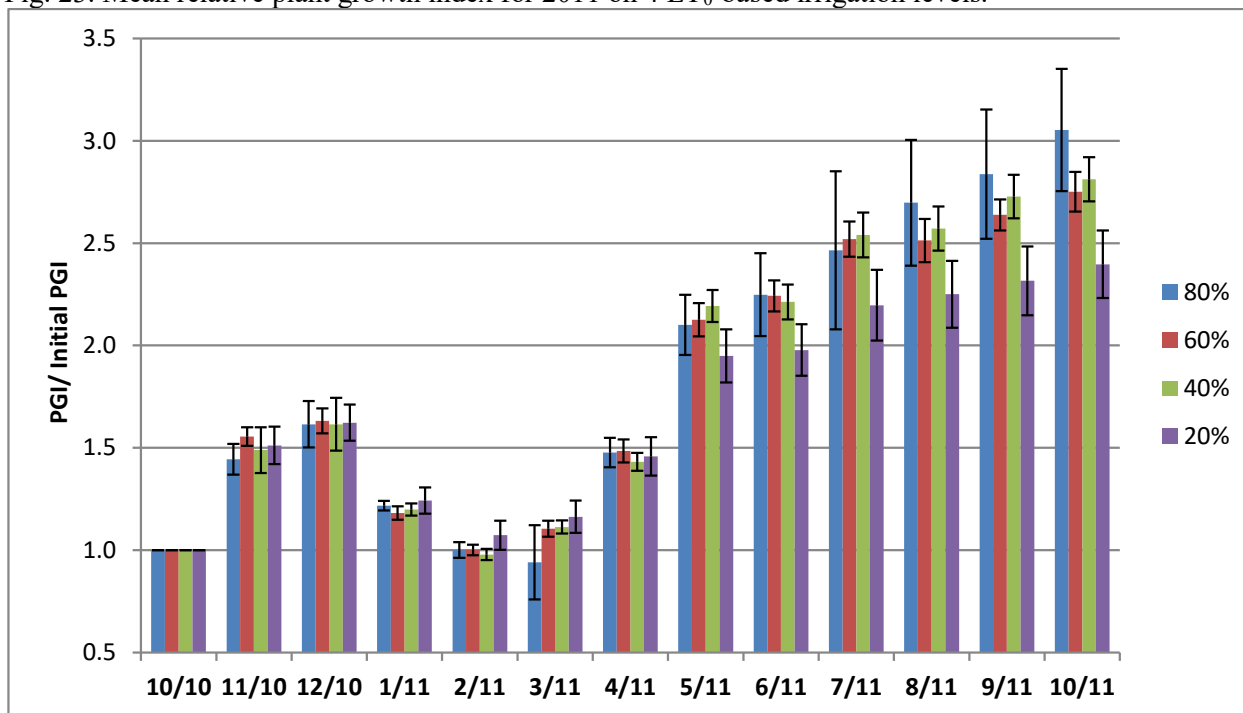
Rosa 'Korbin'

Fig. 22. Mean plant growth index in cm for 2011 on 4 ET₀-based irrigation levels



Error bars represent ± 1 SE.

Fig. 23. Mean relative plant growth index for 2011 on 4 ET₀-based irrigation levels.



Error bars represent ± 1 SE.

Table 10. Mean quality ratings in 6 categories on 4 ET₀-based irrigation levels Oct. 2010- Oct. 2011

Rosa 'Korbin'													
foliage	OCT	NOV		FEB	MAR	APR	MAY	JUNE	JUL	AUG	SEP	OCT	AVG
80%	2.9	3.8		3.2	4.8	4.9	4.3	4.0	3.5	3.5	4.3	4.1	3.9
60%	3.9	4.8		3.8	4.4	5.0	4.6	3.9	3.4	4.3	4.3	4.0	4.2
40%	4.0	4.3		3.5	4.3	5.0	4.4	4.0	3.8	4.1	4.4	4.1	4.2
20%	3.4	4.3		3.4	4.3	5.0	4.2	3.8	3.7	3.8	3.9	3.8	4.0
flowering													
80%	2.9	3.0					3.8	2.7	3.8	2.2	3.5	2.8	3.1
60%	3.2	2.9					3.7	3.4	3.3	2.8	3.8	3.0	3.3
40%	2.2	3.0					4.1	3.6	3.9	3.0	3.8	3.2	3.3
20%	3.7	3.6					4.0	3.3	3.8	2.0	2.3	2.4	3.1
pest tolerance													
80%	4.2	4.6		3.5	5.0	4.8	4.0	4.0	4.8	3.5	4.6	4.6	4.3
60%	3.8	5.0		4.1	5.0	5.0	3.4	3.9	4.8	4.8	4.9	4.8	4.5
40%	3.8	4.8		4.4	5.0	5.0	3.4	4.0	5.0	4.6	4.8	4.3	4.5
20%	3.2	5.0		3.8	4.8	5.0	3.7	4.2	4.8	4.6	4.3	4.4	4.3
disease res.													
80%	3.6	4.0		3.1	4.8	5.0	4.7	4.2	4.5	3.3	4.3	4.1	4.1
60%	3.7	4.7		3.6	4.3	5.0	4.8	3.9	4.3	4.2	4.1	4.0	4.2
40%	3.8	4.3		3.4	4.1	5.0	4.6	4.0	4.4	4.0	4.5	4.1	4.2
20%	3.2	4.8		3.6	4.6	5.0	4.2	3.7	4.3	3.6	3.8	3.6	4.0
vigor													
80%	3.8	3.8		3.0	4.0	4.3	4.2	4.2	4.1	4.2	4.6	4.6	4.1
60%	4.1	4.7		3.7	4.7	4.9	5.0	4.8	4.2	4.8	4.8	4.9	4.6
40%	3.8	4.5		3.4	4.2	4.8	4.8	4.5	3.9	4.9	4.5	4.5	4.4
20%	4.0	4.8		4.0	4.2	4.7	5.0	4.5	4.2	3.8	4.0	3.6	4.2
overall app.													
80%	3.0	4.0		3.1	4.3	4.8	4.3	4.0	4.1	3.5	4.0	4.1	3.9
60%	3.9	4.7		3.7	4.3	5.0	4.3	3.9	3.9	4.0	4.3	4.4	4.2
40%	3.8	4.3		3.3	4.2	5.0	4.2	4.1	3.9	4.1	4.3	4.3	4.1
20%	3.6	4.1		3.4	3.9	4.8	4.3	4.0	3.8	3.7	3.9	3.9	3.9

Table 11. Master Gardener quality average annual quality ratings for *Rosa* 'Korbin'

Rosa 'Korbin' (Iceberg) Average Quality Ratings in 5 Counties 2010-2011					
COUNTY	Alameda	Orange	Riverside	Santa Clara	Shasta
Sunset Zone					
Foliage	3.3	4.3	3.5	4.3	3.8
Flowering	2.3	3.4	2.9	3.4	3.1
Insect Tol.	4.9	4.7	4.4	4.8	4.5
Disease Res.	5.0	4.9	4.9	4.5	3.8
Vigor	2.8	4.1	3.3	4.6	3.8
Overall avg.	4.0	4.5	4.0	4.5	4.0
Bloom period/ highest rating	May-Jun; Oct- Nov/4.0	Mar-Dec/ 5.0	all year/ 5.0	Apr- Dec/ 5.0	Apr-Nov/ 5.0