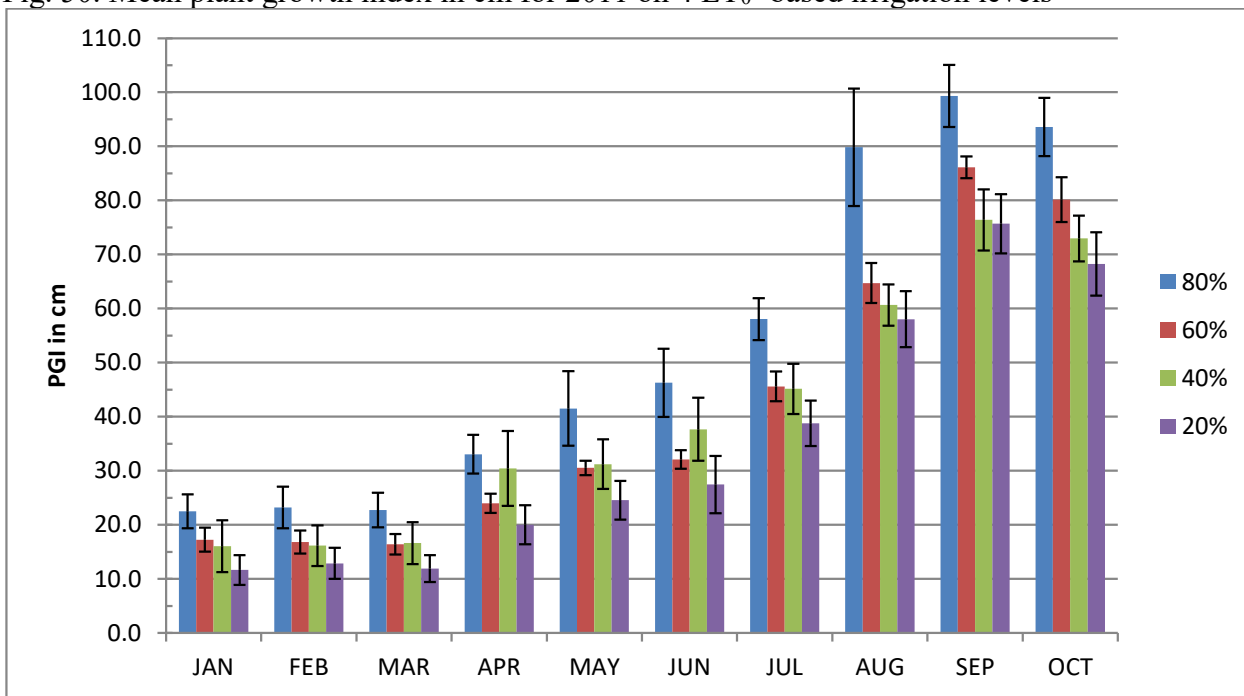


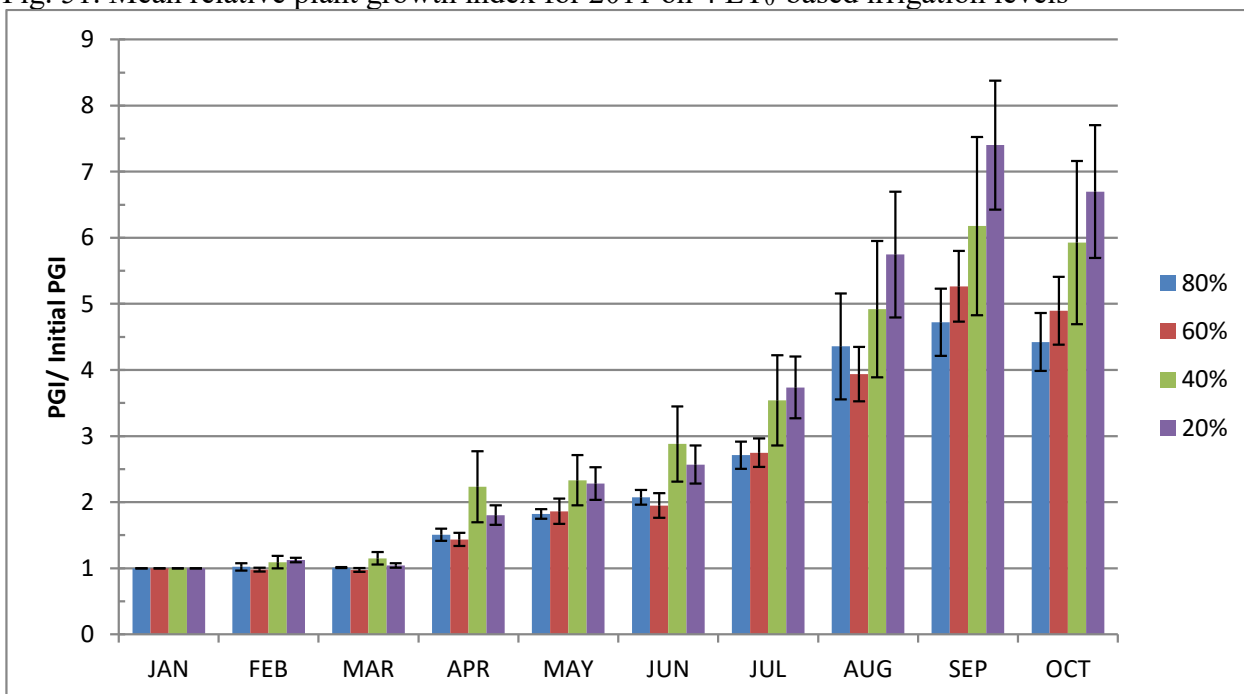
Trachelospermum ‘Star of Toscane’

Fig. 50. Mean plant growth index in cm for 2011 on 4 ET₀-based irrigation levels



Error bars represent ± 1 SE.

Fig. 51. Mean relative plant growth index for 2011 on 4 ET₀-based irrigation levels



Error bars represent ± 1 SE.

Table 30. 2010-2011 Mean quality ratings in 6 categories on 4 ET₀-based irrigation levels

<i>Trachelospermum jasminoides</i> 'Star of Toscane'											
foliage	JAN	FEB	MAR	APR	MAY	JUN	JUL	AUG	SEP	OCT	AVG
80%	2.9	3.1	2.7	2.9	4.4	4.2	4.0	4.8	4.7	5.0	3.9
60%	3.2	2.8	2.8	2.7	4.4	4.0	4.0	5.0	5.0	4.9	3.9
40%	2.8	2.4	3.1	2.6	4.1	4.0	4.0	5.0	4.7	5.0	3.8
20%	2.8	2.2	2.1	2.4	4.6	4.0	4.0	5.0	5.0	5.0	3.7
flowering											
80%					1.0	1.5	2.0	1.0	1.0		1.3
60%					1.0	1.0		1.2	1.5	1.0	1.1
40%					2.0	1.5	3.4	1.0	1.0	1.0	1.7
20%					1.0		2.0	1.0	1.0	1.0	1.2
pest resistance											
80%	2.8	3.3	2.8	2.8	4.8	4.3		5.0	4.9	5.0	4.0
60%	3.2	2.8	2.8	2.7	4.8	4.0		5.0	5.0	4.9	3.9
40%	3.1	2.6	3.1	2.8	4.8	4.0		5.0	5.0	5.0	3.9
20%	3.0	2.6	2.2	2.4	5.0	4.0		5.0	5.0	5.0	3.8
disease resistance											
80%	3.6	3.3	2.9	3.0	4.8	4.5		4.8	4.9	5.0	4.1
60%	3.4	3.4	2.8	3.2	4.6	4.4		5.0	5.0	5.0	4.1
40%	3.2	2.4	3.2	2.8	4.2	4.2		5.0	4.7	5.0	3.9
20%	3.0	2.4	2.2	2.6	4.6	4.4		5.0	5.0	5.0	3.8
vigor											
80%	3.1	2.7	2.9	2.8	4.7	4.5	4.2	5.0	4.9	4.8	4.0
60%	2.2	2.4	2.4	2.6	3.8	3.5	3.9	4.6	4.4	3.8	3.4
40%	2.0	2.6	2.6	2.4	4.0	4.0	3.6	4.5	4.1	4.1	3.4
20%	1.6	1.7	2.0	2.0	3.3	3.1	3.5	4.0	3.5	3.4	2.8
overall appearance											
80%	2.9	2.8	2.7	2.8	4.6	4.2	4.1	5.0	4.7	5.0	3.7
60%	2.9	2.6	2.6	2.6	4.1	3.7	3.5	4.6	4.7	4.2	3.6
40%	2.5	2.4	2.6	2.5	4.0	3.8	3.4	4.6	4.4	4.1	3.6
20%	2.2	2.0	2.0	2.1	3.9	3.5	3.3	4.4	4.2	3.6	3.5