

Cercocarpus betuloides var. blanchaeae

Island Mountain Mahogany

Chart 3a (on all graphs, error bars represent +/- 1SE)

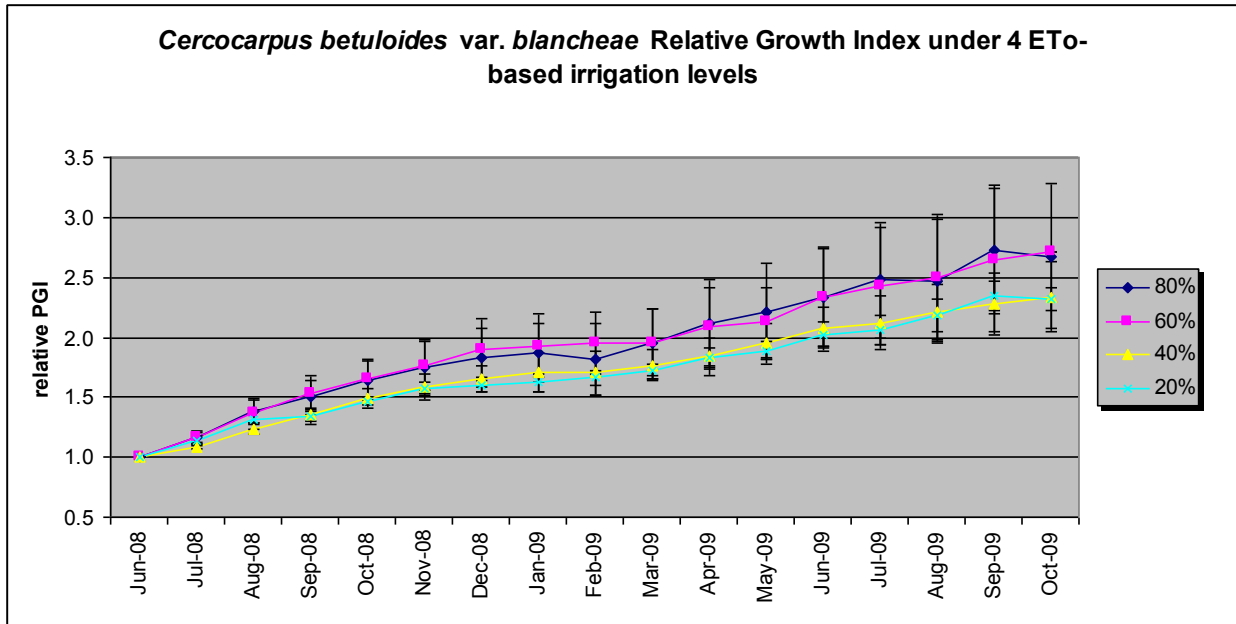
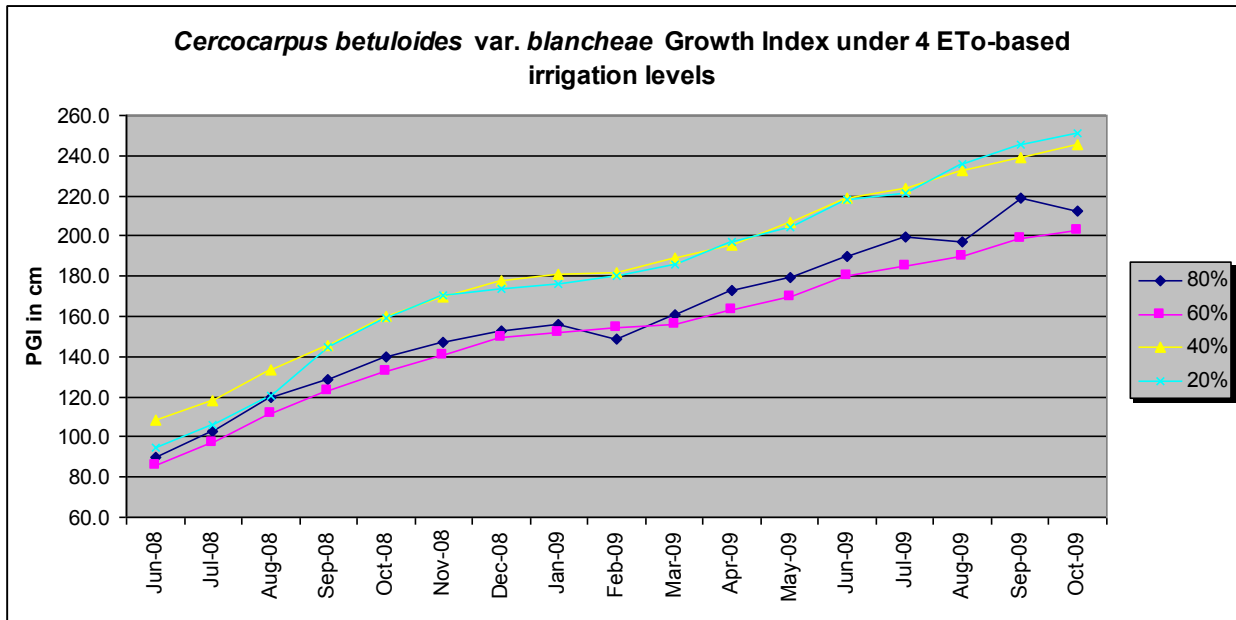


Chart 3b



There were no significant differences in relative plant growth indexes between any two irrigation treatments.

At the end of 2 years, average height and width grew from 39.5" X 35" to 8' X 7'.

QUALITY RATINGS DURING DEFICIT IRRIGATION

Table 3a (all ratings are based on a 1-5 scale)

<i>Cercocarpus betuloides var. blanchae</i>				
foliage	JUNE	JULY	AUG	SEPT
80%	3.6	3.5	3.9	3.6
60%	3.6	3.4	3.1	3.0
40%	3.7	4.0	3.5	3.7
20%	4.0	4.0	4.0	3.6
vigor				
80%	4.4	4.2	4.8	4.0
60%	3.8	3.9	3.6	3.4
40%	4.4	4.9	4.1	4.4
20%	4.8	5.0	5.0	4.5
average				
80%	4.0	3.9	4.3	3.8
60%	3.7	3.7	3.4	3.2
40%	4.1	4.5	3.8	4.1
20%	4.4	4.5	4.5	4.1

Highest values within 0.1 are bolded

IRRIGATION TRIALS QUALITY COMMENT SUMMARY

1. Overall these produced a really handsome, dense, tall shrub in 2 years. They would fit the niche of a tall, narrow shrub quite well.
2. Though the flowers were mostly inconspicuous, the seed heads gave the appearance of a general hairiness for weeks on the plants that flowered heavily. We found it interesting, but others might not like it. All treatments had a couple of plants that flowered and had seed heads.
3. Some plants did not flower at all, and those that did seemed to suffer temporary yellowing, and some scattered branch dieback immediately following seed set, possibly due to using up reserves. *Plants might benefit qualitatively from a nice shearing before seed set.*
4. Though high water certainly didn't harm this species, it performed so well on the lower levels, it should definitely be recommended to provide no more than monthly deep watering during the summer once established.

This plant was not placed in demonstration gardens because it was not available in sufficient numbers from the Arboretum, and was not commercially available.