

Chart 6a (on all graphs, error bars represent +/- 1SE)

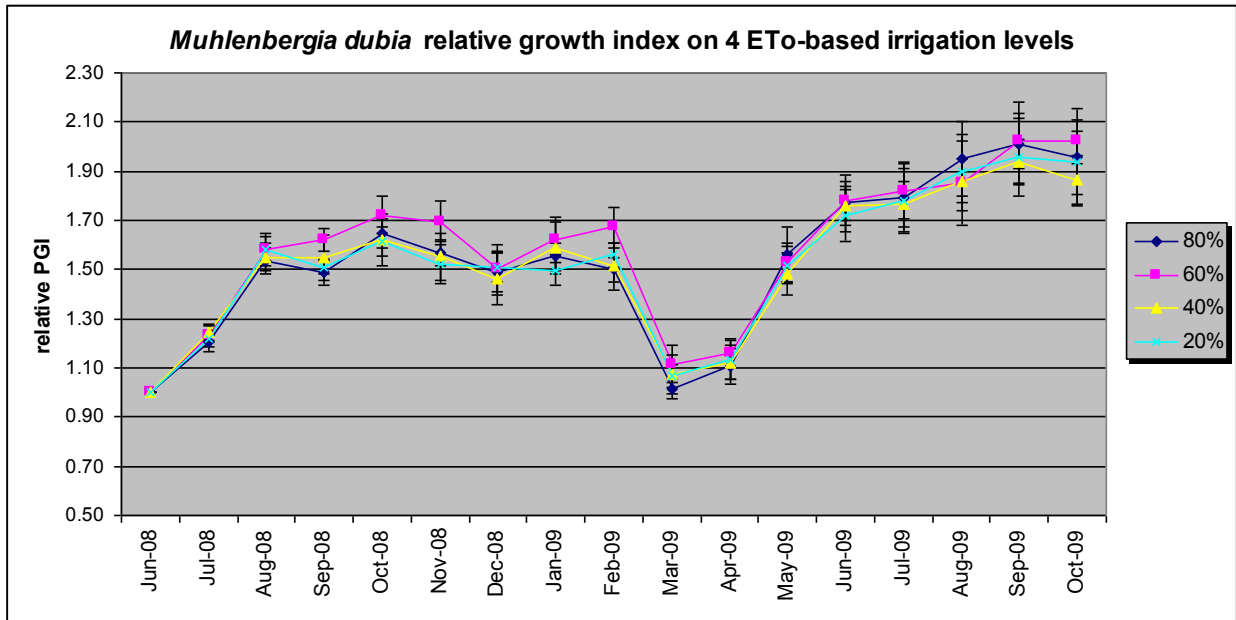
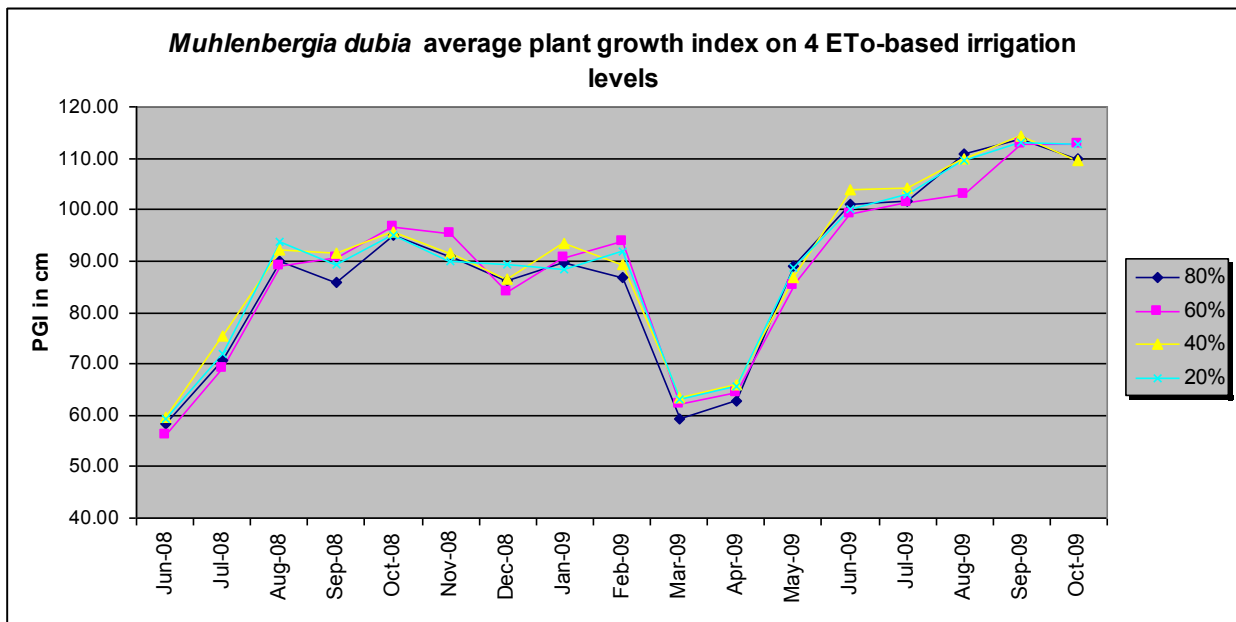


Chart 6b



There were no significant differences between irrigation treatments. The drop in March is reflective of shearing following the February measurements. If this plant can be grown on 20% ETo as successfully as on regular water, then it is extremely versatile in the landscape.

At the end of 2 years, average height and width grew from 18" X 28 to 30" x 58".

QUALITY RATINGS DURING DEFICIT IRRIGATION

Table 6a (all ratings are based on a 1-5 scale)

<i>Muhlenbergia dubia</i>				
foliage	JUNE	JULY	AUG	SEPT
80%	3.8	3.8	4.0	3.8
60%	4.2	3.9	4.0	4.0
40%	3.8	3.9	4.0	3.8
20%	3.8	4.1	3.7	4.1
flower				
80%			3.3	4.8
60%		1.0	2.3	4.5
40%		1.0	3.4	4.5
20%			2.0	4.8
vigor				
80%	4.7	4.6	4.7	4.7
60%	4.7	4.5	4.5	4.7
40%	4.5	4.8	4.5	4.7
20%	4.7	4.7	4.5	4.5
average				
80%	4.2	4.2	4.3	4.3
60%	4.4	4.2	4.3	4.3
40%	4.1	4.4	4.3	4.3
20%	4.3	4.4	4.1	4.3

Highest values within 0.1 are bolded

IRRIGATION TRIALS QUALITY COMMENT SUMMARY

1. This plant was much preferred by rabbits
2. Overall, this was attractive year round. Plants were pruned to 4" in February.

MASTER GARDENERS' DATA- YEAR 1

Table 6b (all ratings are based on a 1-5 scale)

<i>Muhlenbergia dubia</i> average annual ratings 2008								
Sunset zone	14	8	7-central	7-north	23	21	17	
County	Alameda	Fresno	Mariposa	Nevada/ Placer	SD-Pt. Loma	SD- El Cajon	Santa Clara	Average
Foliage	4.2	4.4	4.8	4.0	4.9	4.2	4.8	4.5
Flowering		4.3	5.0	4.7	4.9		2.4	4.2
Pest resistance	4.9	5.0	5.0	4.9	5.0	5.0	5.0	5.0
Disease resistance	5.0	5.0	5.0	5.0	5.0	5.0	5.0	5.0
Overall vigor	3.7	4.1	4.9	4.1	4.8	4.4	4.7	4.4
Overall AVG	4.4	4.5	4.9	4.5	4.9	4.6	4.4	4.6

Table 6c (all ratings are based on a 1-5 scale)

<i>M. dubia</i> average annual ratings YR 1 for Newest Counties (2009)					
Sunset zone	22/23	18/19	14	9	
County	Orange	Riverside	San Joaq.	Shasta	Average
Foliage	4.1	4.4	4.0	4.8	4.3
Flowering	5.0	4.6			4.8
Pest resistance	5.0	5.0	5.0	5.0	5.0
Disease resistance	5.0	5.0	5.0	5.0	5.0
Vigor	4.0	4.4	4.1	4.8	4.4
Average	4.4	4.7	4.5	4.9	4.6

Table 6d

<i>Muhlenbergia dubia</i> average annual ratings YEAR 2 (2009)						
Sunset zone	14	8	7-north	23	21	
County	Alameda	Fresno	Nevada/ Placer	SD- Pt. Loma	SD- El Cajon	Average
Foliage	4.3	4.8	4.5	3.5	4.1	4.2
Flowering		4.0	4.8	3.2		4.0
Pest resistance	5.0	5.0	5.0	5.0	5.0	5.0
Disease resistance	5.0	5.0	5.0	5.0	5.0	5.0
Vigor	4.1	4.3	4.6	3.8	4.3	4.2
Overall AVG	4.6	4.7	4.8	4.3	4.6	4.6

MASTER GARDENER COMMENT SUMMARY

1. Some rabbit damage in some gardens.
2. Universally popular with MGs.
3. No pest or disease issues; once-a-year maintenance (shearing) is a benefit.

Chart 6c

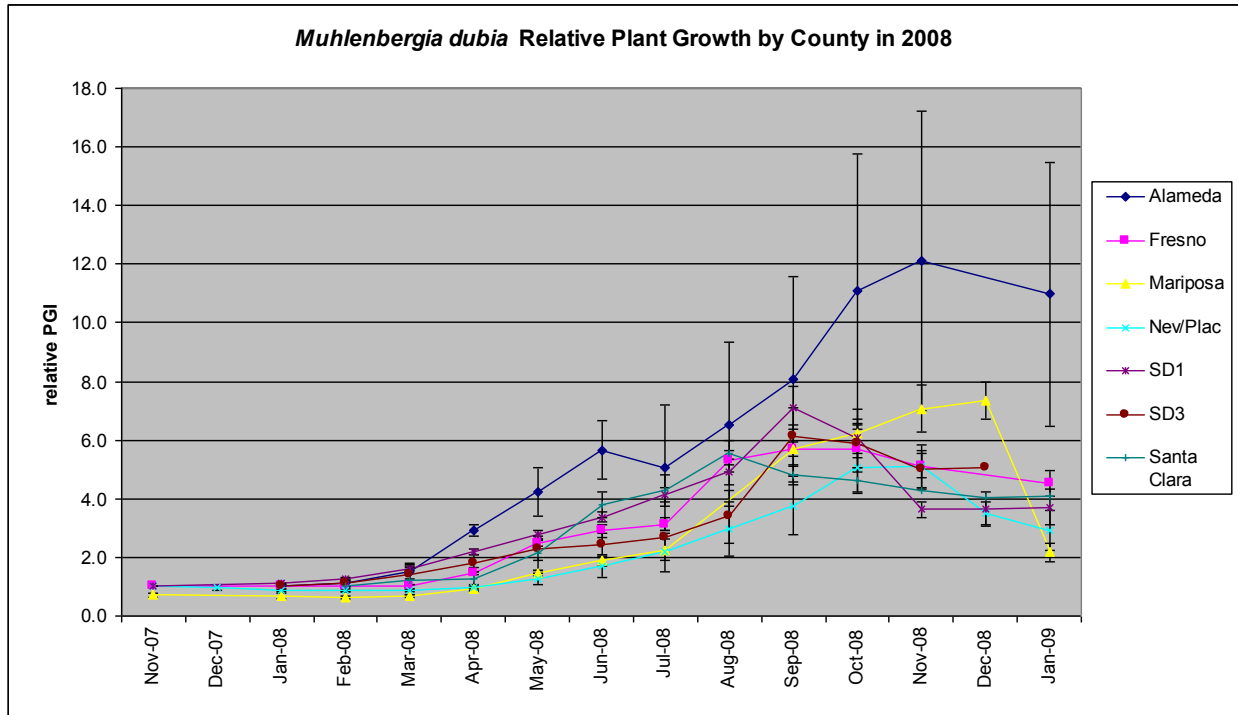


Chart 6d

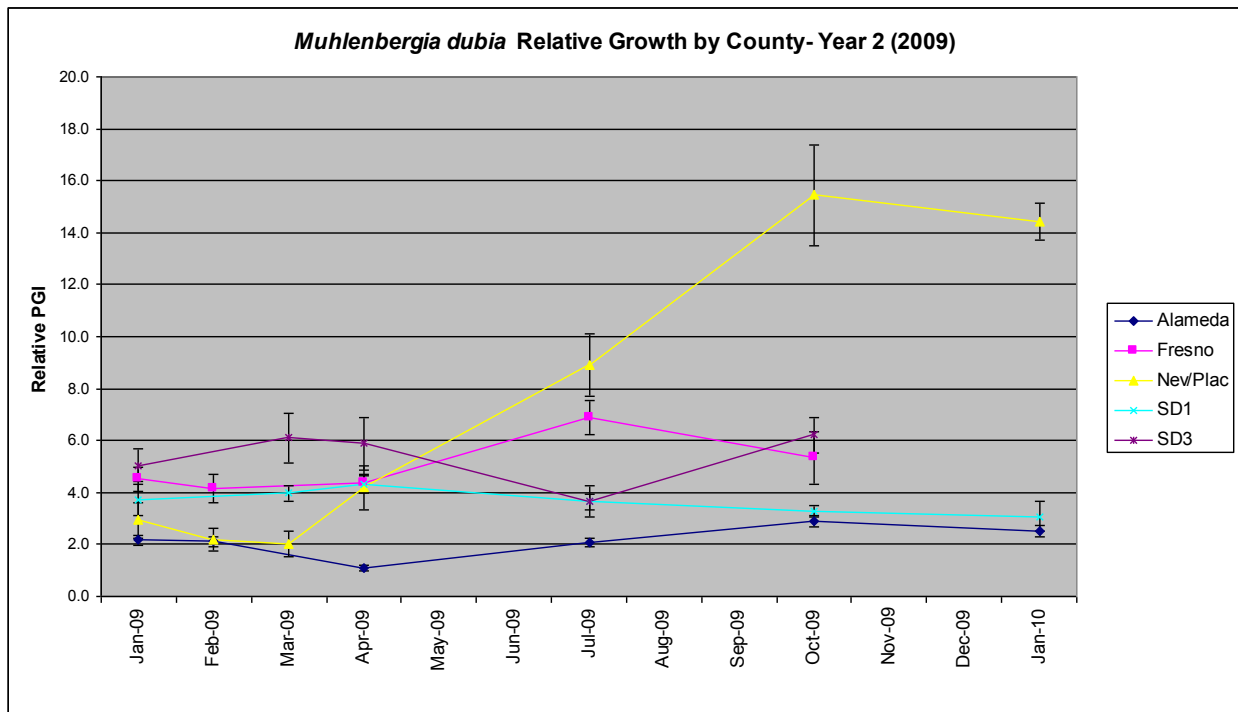


Chart 6e

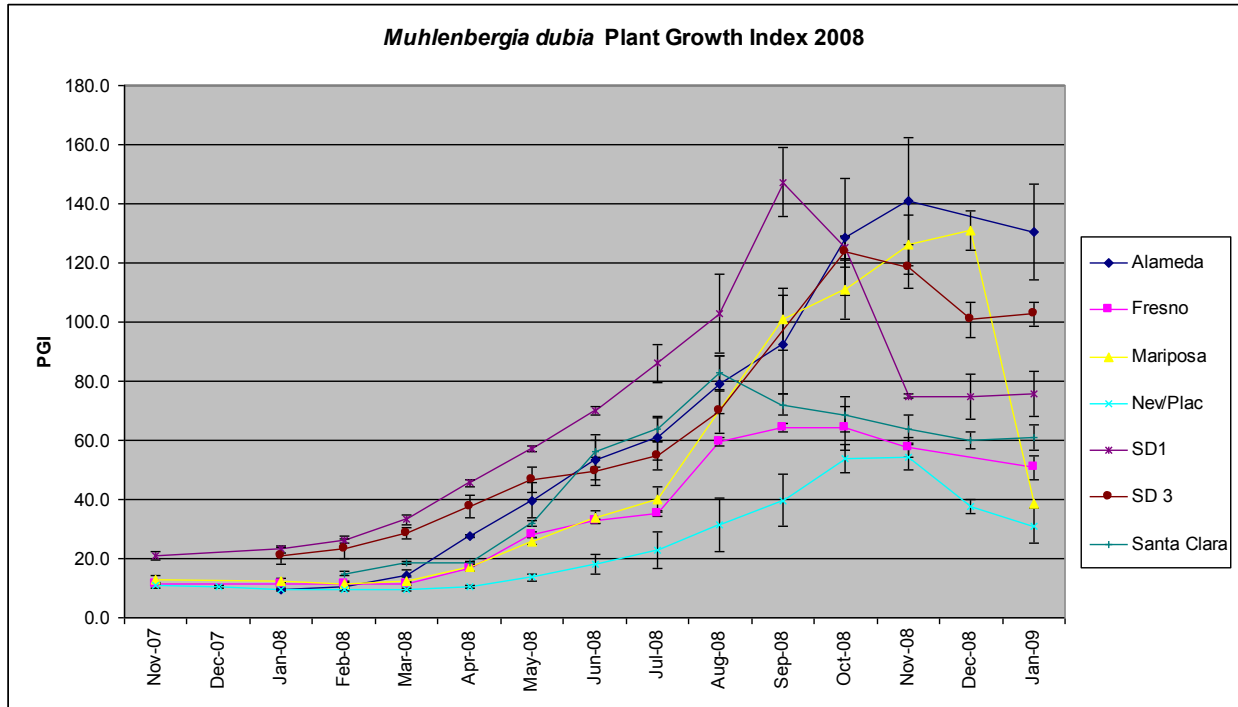
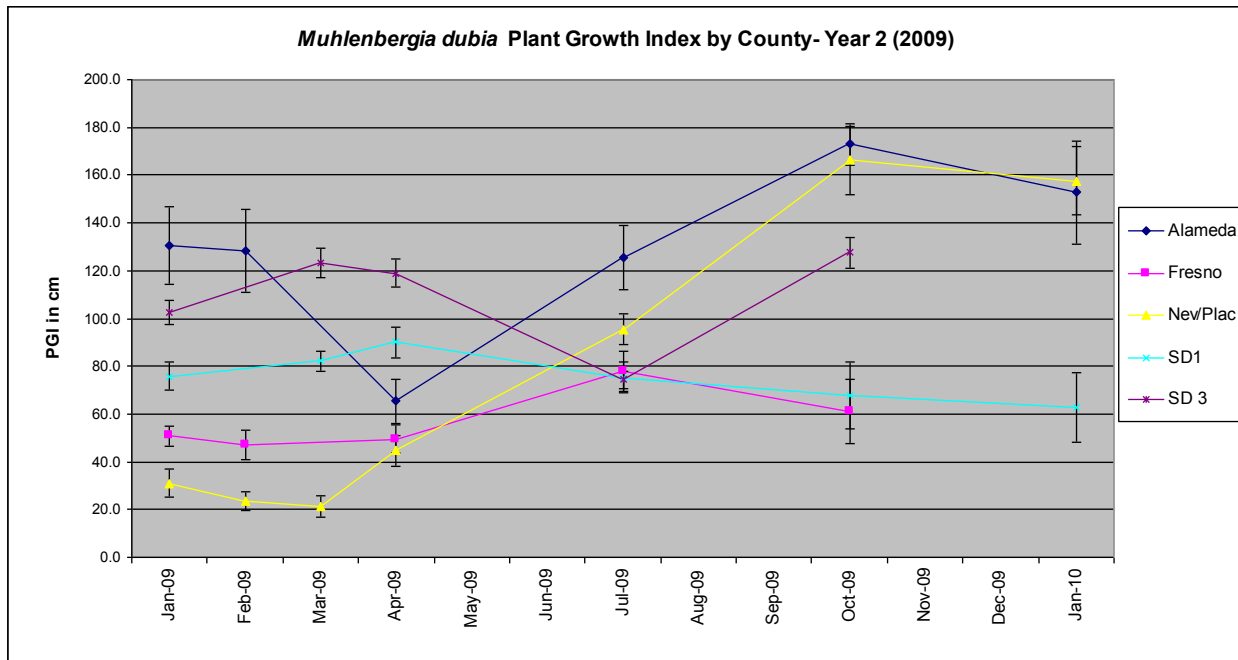


Chart 6f



Santa Clara and Mariposa inexplicably discontinued taking data after Year 1.