

Table 11a. *Hamelia patens* Sierra Red™ average monthly quality ratings (scale 1-5, 1= lowest, 5 = highest) at UC Davis on 3 ETo based irrigation levels in 2020.

Category	ET _o %	Jul	Aug	Sep	Oct	AVG
Overall Appearance	80	3.8	4.2	3.9	3.3	3.8
	50	3.8	4.2	3.8	3.4	3.8
	20	3.7	4.2	3.5	3.0	3.6
Foliage	80	4.3	4.5	3.9	3.9	4.1
	50	4.2	4.2	4.0	4.0	4.1
	20	4.0	4.7	4.0	3.8	4.1
Flower	80	0.0	0.0	1.8	2.3	1.0
	50	0.0	0.0	1.8	1.8	0.9
	20	0.0	0.0	0.3	1.2	0.4
Pest Resistance	80	4.9	4.8	5.0	5.0	4.9
	50	5.0	5.0	5.0	5.0	5.0
	20	5.0	4.8	5.0	4.7	4.9
Disease Resistance	80	5.0	4.8	5.0	5.0	4.9
	50	5.0	4.2	5.0	5.0	4.8
	20	5.0	4.7	5.0	4.7	4.8
Vigor	80	4.8	4.9	4.4	4.4	4.6 ^a
	50	4.8	5.0	4.2	3.8	4.5 ^{ab}
	20	4.5	5.0	4.0	2.8	4.1 ^b

Table 11b. *Hamelia patens* Sierra Red™ average monthly quality ratings (scale 1-5, 1= lowest, 5 = highest) at South Coast REC on 3 ETo-based irrigation levels in 2020.

Category	ET _o %	Apr	May	Jun	Jul	Aug	Sep	Oct	AVG
Overall Appearance	80	3.8	3.3	3.5	3.8	3.3	2.8	2.8	3.3
	50	2.9	2.7	2.9	2.9	2.9	3.0	2.9	2.9
	20	3.0	3.5	3.3	3.2	3.0	2.9	2.8	3.1
Foliage	80	4.3	3.8	4.8	4.3	3.3	2.8	3.0	3.7
	50	3.0	2.7	3.4	3.1	3.4	3.1	3.1	3.1
	20	3.4	3.5	3.9	3.7	3.2	2.9	2.9	3.4
Flower	80	0.0	0.0	0.0	2.0	3.5	3.5	3.3	1.8
	50	0.0	0.0	0.0	1.6	2.6	1.9	1.9	1.2
	20	0.0	0.0	0.0	1.4	2.7	1.9	2.2	1.2
Pest Resistance	80	5.0	5.0	4.8	4.8	4.0	3.3	3.3	4.3
	50	4.9	5.0	5.0	4.1	4.1	3.6	3.3	4.3
	20	4.8	5.0	5.0	4.7	3.7	2.9	2.5	4.1
Disease Resistance	80	5.0	5.0	5.0	5.0	2.8	2.8	2.8	4.0
	50	4.7	5.0	5.0	4.3	4.1	4.1	4.1	4.5
	20	4.8	5.0	4.9	4.7	3.2	3.2	3.2	4.1
Vigor	80	4.3	4.5	5.0	5.0	5.0	5.0	5.0	4.8
	50	3.4	3.9	3.9	3.7	4.3	4.1	4.1	3.9
	20	4.3	3.9	4.7	4.7	4.7	4.7	4.7	4.5

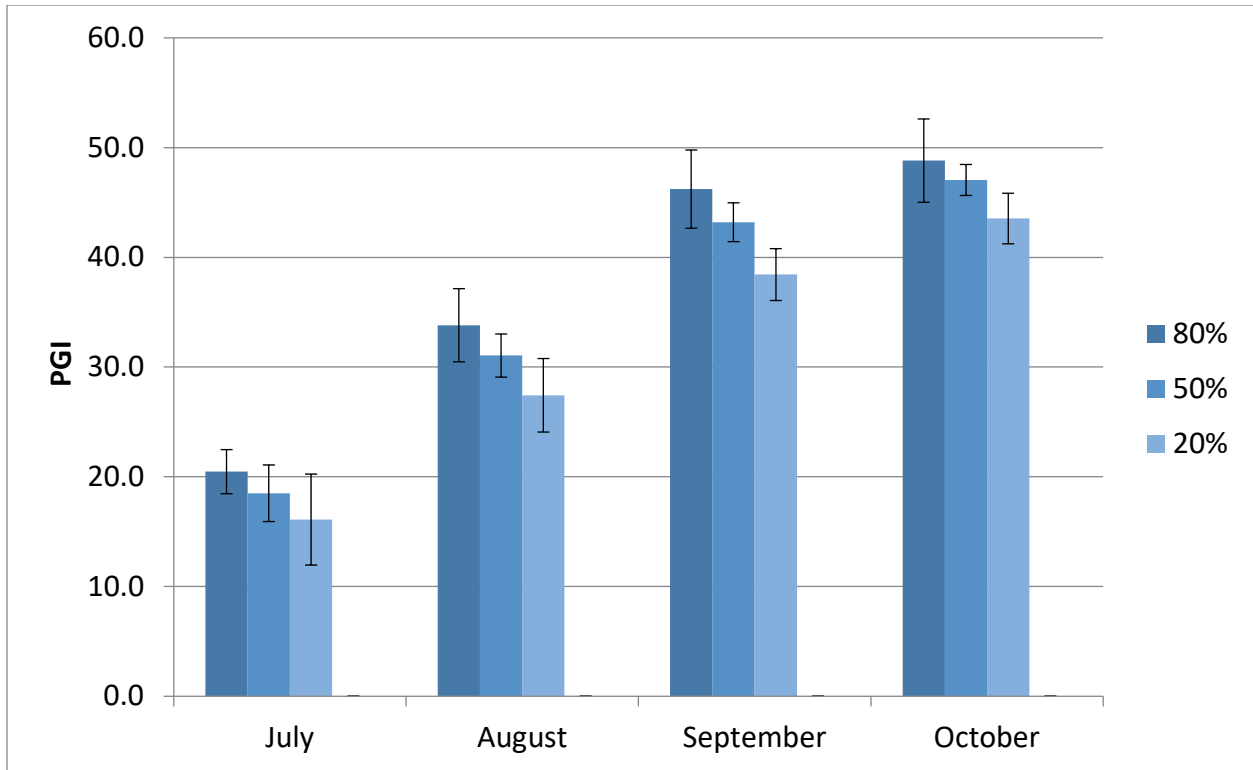


Figure 4a. *Hamelia patens* Sierra Red™ average monthly plant growth index (PGI) at UC Davis on 3 ETo-based irrigation levels in 2020.

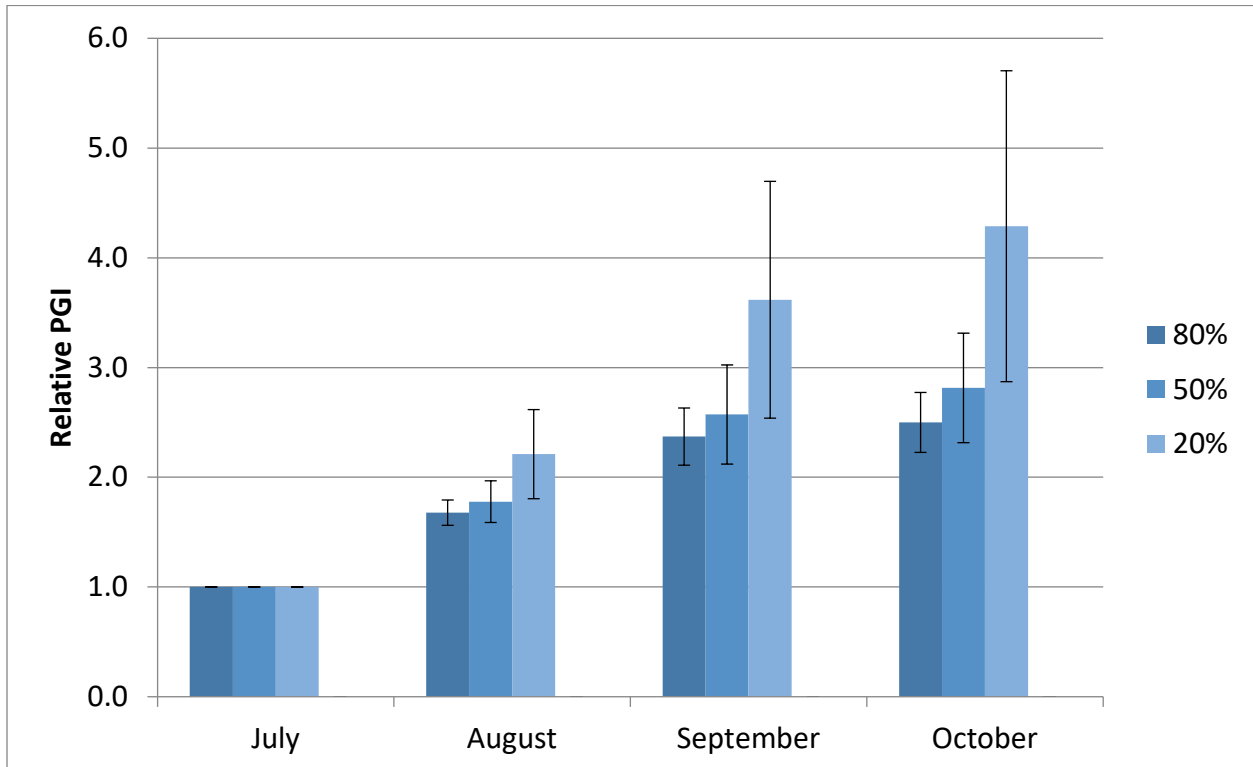


Figure 4b. *Hamelia patens* Sierra Red™ average monthly relative plant growth index (RPGI) at UC Davis on 3 ETo-based irrigation levels in 2020.

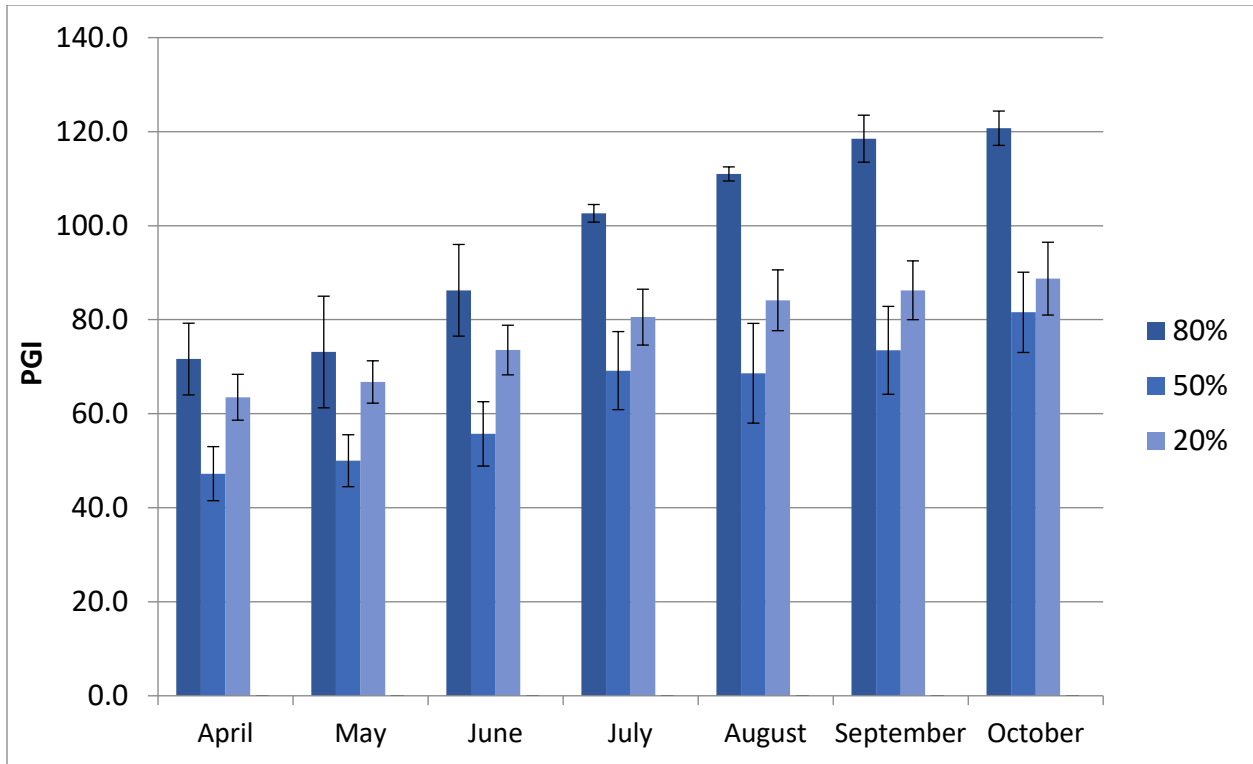


Figure 4c. *Hamelia patens* Sierra Red™ average monthly plant growth index (PGI) at South Coast REC on 3 ETo-based irrigation levels in 2020.

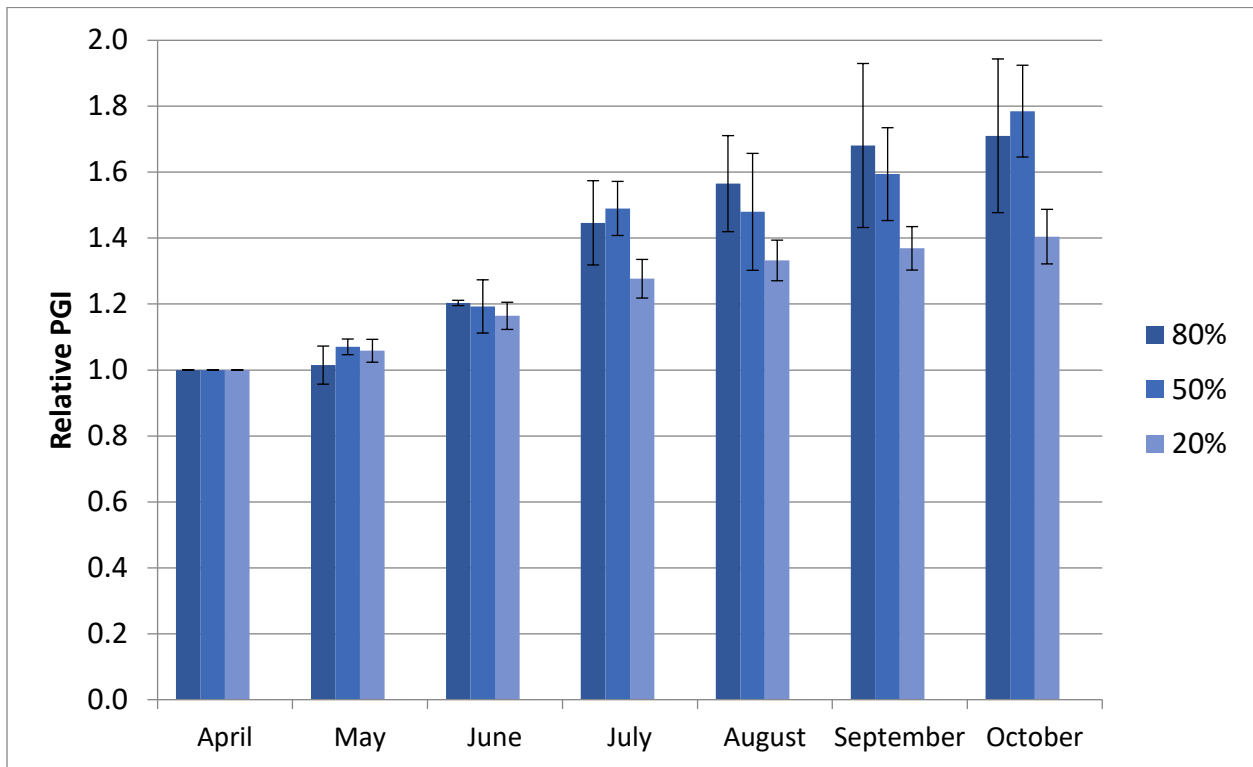


Figure 4d. *Hamelia patens* Sierra Red™ average monthly relative plant growth index (RPGI) at South Coast REC on 3 ETo-based irrigation levels in 2020.