

Table 26a. *Ruschia lineolata* 'Nana' average monthly quality ratings (scale 1-5, 1= lowest, 5 = highest) at UC Davis on 3 ETo-based irrigation levels in 2020.

Category	ET <sub>o</sub> %	Apr	May	Jun	Jul	Aug	Sep	Oct	AVG
Overall Appearance	80	3.8	3.8	3.4	3.4	3.6	4.0	3.2	3.6
	50	3.9	3.7	3.8	3.9	3.9	4.1	3.9	3.9
	20	3.9	3.7	3.3	3.0	3.4	3.6	3.3	3.4
Foliage	80	4.0	4.5	3.9	3.9	4.1	4.0	3.1	3.9
	50	4.3	4.1	4.3	4.3	4.4	4.1	4.3	4.2
	20	4.4	4.1	3.3	3.0	3.6	3.6	3.7	3.7
Flower	80	0.0	0.0	0.0	0.3	0.1	0.0	0.8	0.2
	50	0.0	0.0	0.0	0.4	0.0	0.0	0.6	0.1
	20	0.1	0.0	0.0	0.3	0.0	0.0	0.3	0.1
Pest Resistance	80	5.0	5.0	5.0	4.9	5.0	5.0	4.8	4.9
	50	5.0	5.0	4.9	5.0	5.0	5.0	5.0	5.0
	20	5.0	5.0	5.0	5.0	5.0	5.0	5.0	5.0
Disease Resistance	80	5.0	5.0	4.8	4.9	4.8	5.0	4.8	4.9
	50	5.0	5.0	5.0	5.0	5.0	5.0	5.0	5.0
	20	5.0	5.0	4.7	4.9	4.7	5.0	5.0	4.9
Vigor	80	4.9	4.6	4.3	4.1	4.5	4.1	3.8	4.3
	50	4.9	4.9	4.9	4.8	4.8	4.0	4.0	4.6
	20	5.0	4.7	4.1	4.4	4.4	3.4	3.7	4.3

Table 26b. *Ruschia lineolata* 'Nana' average monthly quality ratings (scale 1-5, 1= lowest, 5 = highest) at South Coast REC on 3 ETo-based irrigation levels in 2020.

Category	ET <sub>o</sub> %	Apr	May	Jun	Jul	Aug	Sep	Oct	AVG
Overall Appearance	80	3.7	3.6	3.4	3.2	3.3	3.0	3.1	3.3
	50	3.9	3.8	3.3	3.4	3.1	3.1	3.0	3.4
	20	3.6	3.6	3.1	3.1	3.1	2.8	2.7	3.2
Foliage	80	4.1	3.7	3.9	3.4	3.4	3.0	3.1	3.5
	50	4.5	4.3	3.8	3.9	3.6	3.3	3.3	3.8
	20	4.0	3.6	3.4	3.4	3.3	2.9	2.7	3.3
Flower	80	0.0	0.0	0.0	0.3	0.9	1.1	1.3	0.5
	50	0.0	0.0	0.0	0.1	0.4	0.9	1.1	0.3
	20	0.0	0.0	0.0	0.3	0.3	0.4	1.1	0.3
Pest Resistance	80	5.0	5.0	5.0	5.0	5.0	5.0	5.0	5.0
	50	5.0	5.0	5.0	5.0	5.0	5.0	5.0	5.0
	20	5.0	5.0	5.0	5.0	5.0	5.0	5.0	5.0
Disease Resistance	80	5.0	5.0	5.0	5.0	5.0	5.0	5.0	5.0
	50	5.0	5.0	5.0	5.0	5.0	5.0	5.0	5.0
	20	5.0	5.0	5.0	5.0	5.0	5.0	5.0	5.0
Vigor	80	4.7	4.8	5.0	5.0	5.0	4.9	4.9	4.9
	50	4.9	4.8	4.8	4.8	4.8	4.8	4.8	4.8
	20	4.9	4.8	4.4	4.4	4.4	4.4	4.4	4.5

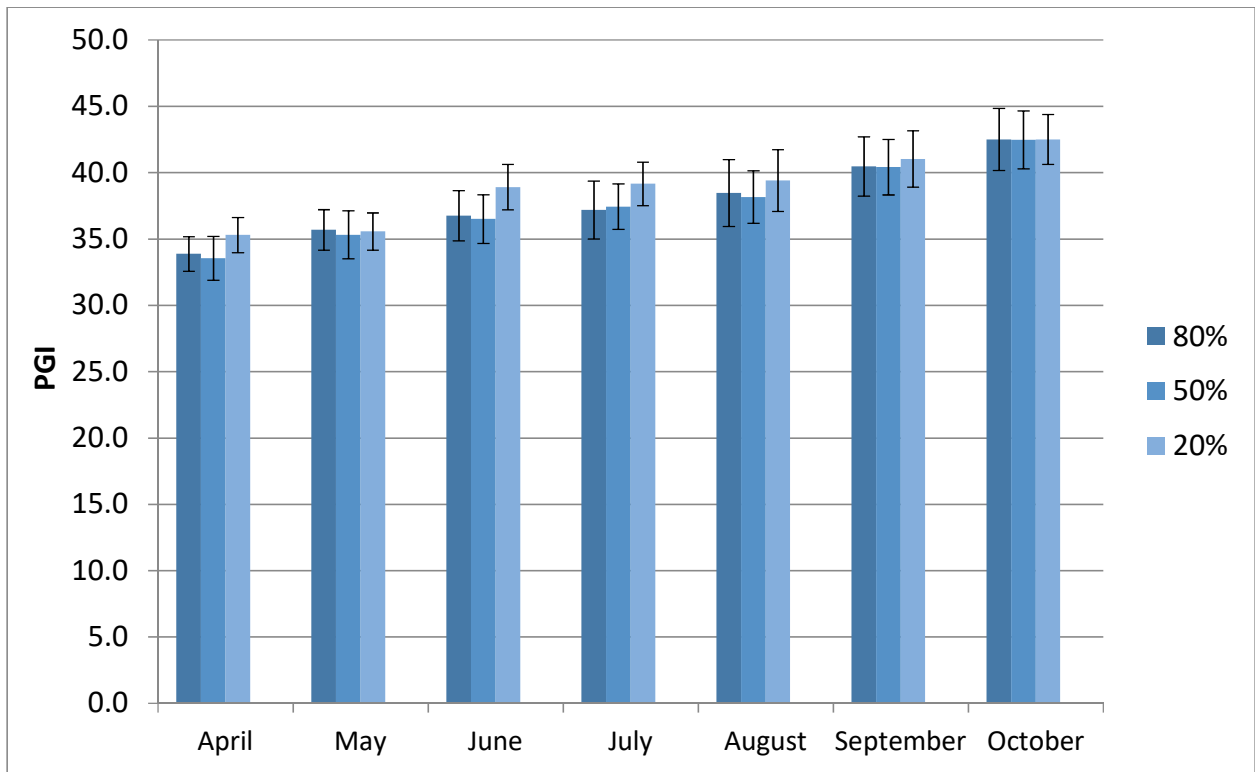


Figure 19a. *Ruschia lineolata* 'Nana' average monthly plant growth index (PGI) at UC Davis on 3 ET<sub>0</sub>-based irrigation levels in 2020.

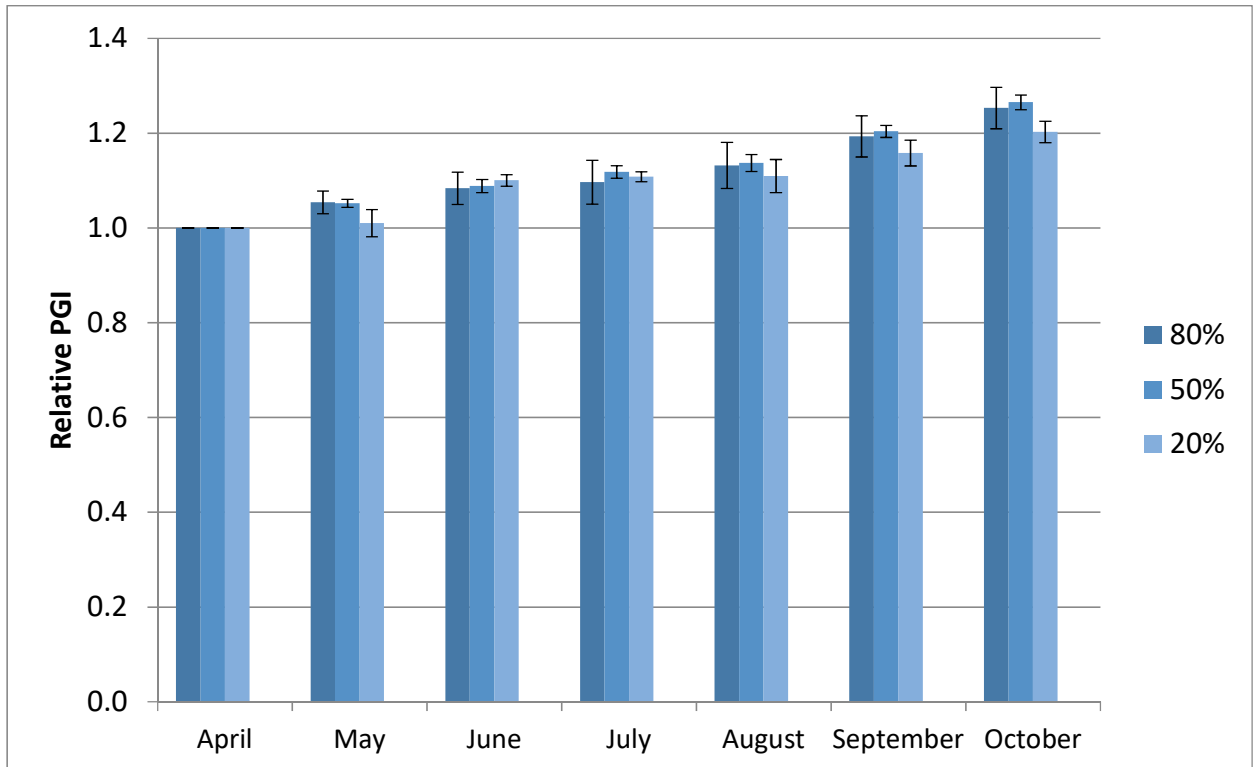


Figure 19b. *Ruschia lineolata* 'Nana' average monthly relative plant growth index (RPGI) at UC Davis on 3 ET<sub>0</sub>-based irrigation levels in 2020.

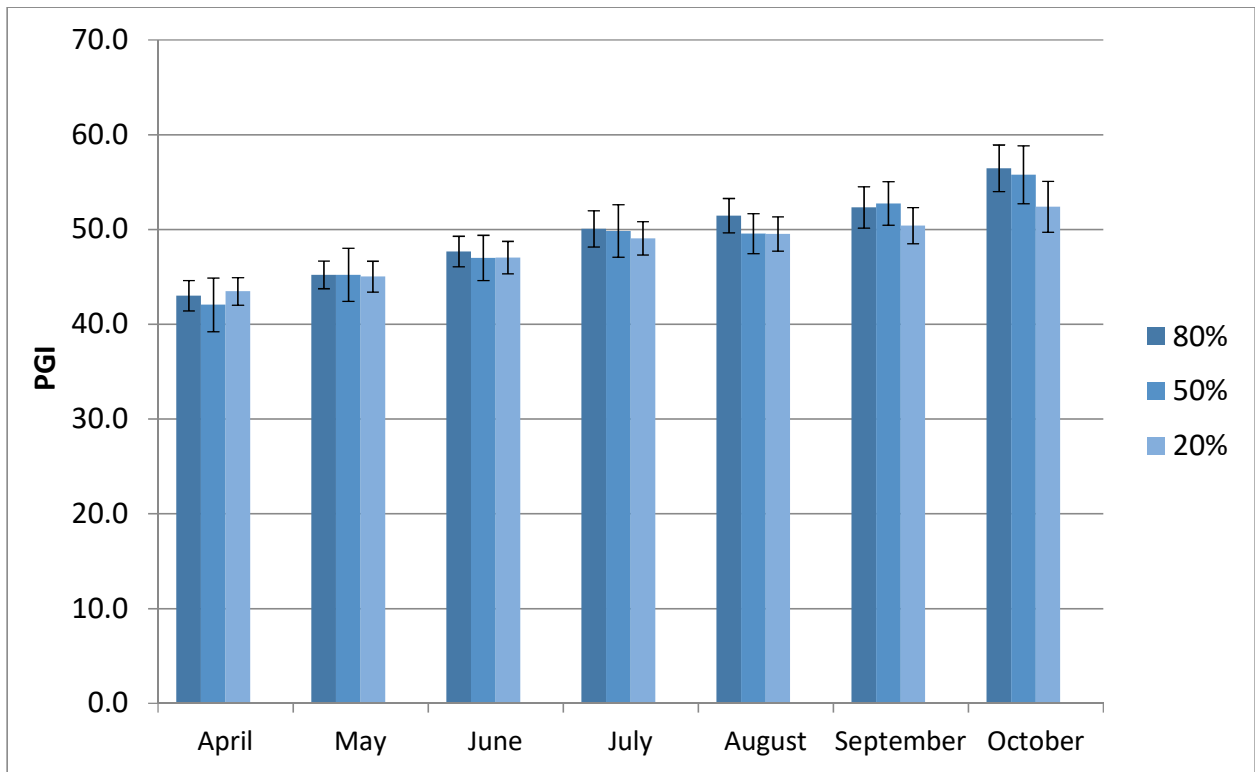


Figure 19c. *Ruschia lineolata* 'Nana' average monthly plant growth index (PGI) at South Coast REC on 3 ETo-based irrigation levels in 2020.

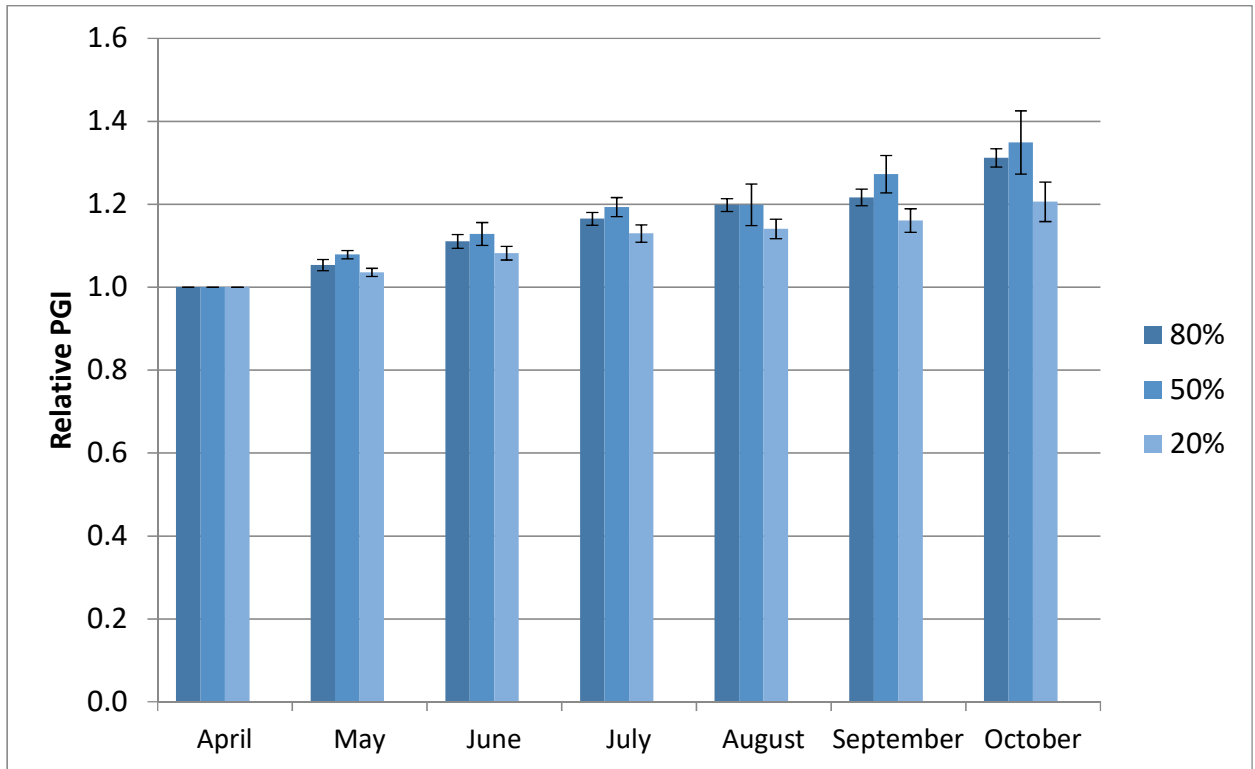


Figure 19d. *Ruschia lineolata* 'Nana' average monthly relative plant growth index (RPGI) at South Coast REC on 3 ETo-based irrigation levels in 2020.