

University of California President's Advisory Commission on Agriculture and Natural Resources

CHUCK AHLEM

Owner and Operator, Charles Ahlem Ranch



Chuck is the owner/operator of Charles Ahlem Ranch in Turlock with 4,000 Jersey milking cows and farming 1,100 acres. In addition, he is a founding partner of Hilmar Cheese Company, which annually produces more cheese from its Hilmar, California site than any other facility in the world. He serves as member on the USDA

Trade Policy Committee (APAC), the California Milk Advisory Board and the UC Davis Western Institute for Food Safety and Security. Ahlem has served as Undersecretary of the California Department of Food and Agriculture in the Schwarzenegger administration. Other positions of leadership have included serving as dairy industry representative on the State Board of Food and Agriculture and membership on the Central Valley Regional Water Quality Control Board. A lifetime resident of the Central Valley, Charles graduated with a degree in dairy science from California State University, Fresno.

ASHLEY BOREN

Chief Executive Officer, Sustainable Conservation



Ashley has directed the strategy, growth and operations of Sustainable Conservation since 1997. She received a 2007 James Irvine Foundation Leadership Award for her commitment to solving a variety of critical environmental problems facing California. She began her career at

The Nature Conservancy in program development and fundraising. Ashley serves on the CA State Board of Food and Agriculture. Ashley served on the Board of the Robert and Patricia Switzer Foundation from 2002 to 2011, the last two years as Chair, and on Stanford Business School's Alumni Consulting Team Board from 1995 to 2002, the last three years as Chair. She is a graduate of the Marlborough School in Los Angeles, which awarded her their 2008 Woman of the Year Award and has a BA in human biology, an MA in applied economics and an MBA from Stanford University.

DON BRANSFORD

Owner and Operator, Bransford Farms

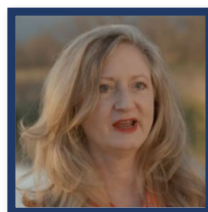


Don was appointed to the State Board of Food and Agriculture in 2006 by Governor Arnold Schwarzenegger and reappointed in 2011. He served as Chair of the USA Rice Federation Rice Producers' Group, the California Rice Commission, the Northern California Water Association and is President of the Glenn-Colusa Irrigation

District. He served on the board of Farmers' Rice Cooperative and California Rice Industry Association. Bransford Farms is a diversified farming operation growing rice, prunes and almonds in the Sacramento Valley. He was appointed to the Bay Delta Advisory Council of CALFED by Governor Pete Wilson in 1995 and was appointed to the Governor's Advisory Drought Planning Panel in 2000 by Governor Davis. He was named the USA Rice Federation's Rice Farmer of the Year for 1999 and awarded a Lifetime Achievement Award in the US rice industry in 2005.

CELESTE CANTÚ

Chair, San Diego Water Quality Control Board



Previously, Celeste led the Santa Ana Watershed Project Authority (SAWPA) and has been working on the crest-to-coast, corner-to-corner Integrated Regional Watershed Management Plan that addresses all water-related issues and joins entities and hundreds of stakeholders seeking to create a new

vision of sustainability for the Santa Ana River Watershed. Celeste served as the Executive Director for the California State Water Resources Control Board and as CEO of Water Education for Latino Leaders (WELL). She joined the PPIC Water Policy Center Advisory Council in 2015 and became chair in 2017. During the Clinton Administration, Celeste served as the USDA Rural Development State Director for California. Celeste was born and raised in the Imperial Valley to a pioneer family. There she served first as Planning Director for her hometown, Calexico, and later as Executive Director for the Imperial Valley Housing Authority. Celeste has a BA from Yale in Urban

Planning and Policy and a Master's in Public Administration from Harvard's Kennedy School of Government.

PATRICIA CARRILLO

Executive Director, Agriculture & Land-Based Training Association (ALBA)



Patricia has over a decade of experience working in the non-profit sector, including working as ALBA's Business Education Program from 2006 to 2013. In that role, she developed tools and curricula for beginning farm entrepreneurs, increased alternative financing opportunities for farmers, and advocated for socially disadvantaged beginning farmers. Patricia's skills include grant management and reporting, budgeting for small businesses, small business development consulting, program monitoring and evaluation. Prior to ALBA, she was Finance & Operations Director at the YWCA Monterey County and later the Program Director at the Housing Resource Center of Monterey County, where she was responsible for homeless prevention, rapid rehousing, Veteran assistance, security deposit guarantee, financial literacy and home ownership programs. Patricia is a Salinas native and holds a BS in Business Administration from San Jose State University, with a specialization in Business Management.

CAROL CHANDLER

Partner, Chandler Farms, L.P.



Carol is a past state president of California Women for Agriculture, a member of the CSU Fresno Water Task Force and served on the California State University Board of Trustees. She was a member of the University of California Board of Regents and belongs to La Feliz Guild of Valley Children's Hospital and the Common Threads Committee, which honors philanthropic women in Valley communities. The California State Legislature named Carol as Woman of the Year in 1992 and 2002. Carol was elected to the board of Western Growers in 2004 and currently serves as Treasurer. She received her bachelor's degree from University of California at Davis and a master's degree from California State University in Fresno. Before joining the family farm, growing grapes, peaches, plums, citrus and almonds, Carol taught at Fresno City College.

PAULA DANIELS

Co-Founder and Chair, Center for Good Food Purchasing



Previously Paula was Executive Director of California Central, a USC Villaraigosa Initiative, from April of 2015 to June 2016. She is a public policy leader in environmental food and water policy; awards include the 2012-2013 Stanton Fellowship (awarded by the Durfee Foundation); the 2015 Pritzker Education Fellow at the UCLA Institute of the Environment and Sustainability; the 2013 Lee Chair in Real Estate Law and Urban Planning. She has taught at USC, and Vermont Law School. After a long career as an attorney in civil litigation, she served as a Los Angeles Public Works Commissioner (a full-time position overseeing the Department of Public Works) and then Senior Advisor to Mayor Villaraigosa of Los Angeles. She has been a commissioner with the California Coastal Commission, and a gubernatorial appointee on the board of the California Bay-Delta Authority. She is an appointee of Governor Brown to the California Water Commission and served in his Office of Planning and Research as Senior Fellow for Food Systems, Water and Climate.

GRANT DAVIS

General Manager, Sonoma County Water Agency



Grant is responsible for providing drinking water to over 600,000 residents in portions of Sonoma and Marin counties, wastewater management for 60,000 customers, maintaining nearly 100 miles of streams and detention basins for flood protection, and restoring habitat for three federally listed fish species in the Russian River. His team also maintains a renewable energy portfolio that has resulted in a carbon free water supply and distribution system. Prior to joining Sonoma Water, Mr. Davis was Executive Director of The Bay Institute. Mr. Davis also worked for Congresswoman Woolsey, State Senator Marks, and Assemblywoman Killea. Mr. Davis currently serves as a board member of the California Utility Executives and Managers Association, WateReuse California, and the Bay Planning Coalition. Mr. Davis received his BA in political science from the University of California at Berkeley.

JOHN DE LUCA*Senior Advisor to UC President*

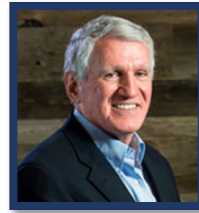
John, who received his PhD in International Relations at UCLA has served as Senior Advisor to University of California (UC) President Janet Napolitano for Agriculture, Business and Public Policy, following similar positions with UC Presidents Atkinson, Dynes, and Yudof. He also served as a member of the UC Davis Chancellor's

Advisory Board and is currently Emeritus at UC Berkeley's Goldman School. He is the Past Chairman of the Board for the Ernest Gallo Clinic and Research Center at UCSF and its affiliate, the Institute for Molecular Neuroscience. John served as President and CEO of the Wine Institute from 1975 to 2003, where he directed the industry's legal and governmental activities in the U.S. and overseas, representing the California wine industry's hundreds of wineries and thousands of winegrowers. Prior to that, he served eight years as Deputy Mayor of San Francisco to Mayor Joseph Alioto (1968-1976). John was a Fulbright Scholar and was selected for the first class of the White House Fellows program, where he served on the National Security Council and with the Vietnam Coordinating Committee overseeing President Lyndon Johnson's Vietnam policy. Currently, De Luca is a member of the Board of Directors of the Bay Area Council.

LUCAS FRERICHS*Associate Director of State Policy, The Nature Conservancy*

Lucas Frerichs has served on the Davis City Council since 2012, and currently serves as Vice Mayor. Lucas is a leading regional voice for smart growth, multi-modal transportation, public safety, economic development and environmental sustainability. He currently serves as Board Chair of the Sacramento Area

Council of Governments (SACOG), and serves on the boards of the following agencies: Capitol Corridor JPA (Amtrak California), Yolo County Transportation District (Yolobus), the Yolo Habitat Conservancy, and Valley Clean Energy (VCE)—Yolo County's local clean power provider. Lucas' life of public service began as a long-time staffer in the California State Assembly working for four separate Assemblymembers. With nearly fifteen years of experience working in the halls of the State Capitol, Lucas currently works as Associate Director of State Policy for The Nature Conservancy, where he is responsible for advocating on behalf of the environment before the California State Legislature and numerous state agencies. He received a BA in government from California State University, Sacramento, and earned a certificate in land use and environmental planning from UC Davis.

BILL FROST*UC Cooperative Extension Advisor Emeritus and former Associate Vice President, UC ANR*

Bill is a rangeland management consultant, University of California Cooperative Extension (UCCE) Natural Resource Advisor Emeritus and former Associate Vice President of University of California Agriculture and Natural Resources (ANR). Frost joined ANR in 1994 as a UCCE Advisor in natural

resources working a regional assignment in the central Sierra, following time with University of Arizona Cooperative Extension. He held various positions with ANR including Natural Resource & Animal Agriculture Program Leader and Director of the ANR Research and Extension Center System. Earlier he worked for the California Agricultural Technology Institute at CSU Fresno as a rangeland specialist and director of the San Joaquin Experimental Range. Bill holds a doctorate in range management from the University of Arizona and degrees in range science from UC Davis.

LUAWANNA HALLSTROM*Principal, Collaborative Communications™*

Hallstrom previously served as Chief Operating Officer for Harry Singh & Sons, a family owned vine-ripe tomato producer in the US and General Manager of Oceanside Produce Inc, receiving her Bachelor of Science in Nutrition & Food Science at California Polytechnic, San Luis Obispo. She has served as a member of

several agricultural organizations including California Farm Bureau, Western Growers Association, Roots of Change Council, Cal Poly College of Agriculture, Food and Environmental Sciences Presidents Advisory Council. She serves as President of the National Council for Agricultural Employers, Co-chair of the National Agricultural Coalition for Immigration Reform, and as board member with California Department of Food and Ag Co-chairing the California Ag Vision 2030. Ms. Hallstrom promotes legislation and policy that promotes sustaining agriculture, immigration reform, food safety and a secure domestic food supply for our nation. Her work has been recognized internationally. Over the last 25 plus years she has listened, learned and taken action to the voices of Agriculture focusing on issues through meaningful and original stories, providing insights into the industry of Agriculture, building bridges and developing relationships.

JACK HANSON*President and Owner, Willow Creek Ranch*

Hanson, his wife Darcy, and their two sons, own and operate a family cattle ranch near Susanville, where they run about 500 mother cows on owned and leased private lands along with BLM and California state lands. Hanson began his agriculture career in Siskiyou County in 1975, before moving his cattle

operation to his family's current ranch in 1985. He served as a Lassen County Supervisor from 2003 until 2013. Currently, he serves as the California Cattlemen's Association Treasurer, the California Animal Health and Food Safety Laboratory System Chairman, and the Tri State Livestock Credit Corporation Chair. Jack graduated from University of California, Berkeley, with a bachelor's degree in economics.

LON HATAMIYA*President and Chief Executive Officer, The Hatamiya Group*

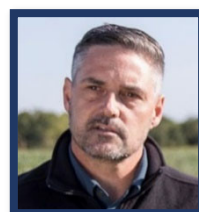
Consultant for ag tech and high companies, Former Secretary of CA Trade and Commerce (Gov Davis), Former Administrator of AMS and FAS (President Clinton). Hatamiya specializes in retail, banking and financial institutions, international, national, and regional economic analysis, food and agriculture,

intellectual property valuation, government and public policy, and litigation support. Currently, Hatamiya serves on the Board of Directors of Quiks, an online payments company; and Expanesthetics, a preclinical-stage, pharmaceutical company. He also serves on the Advisory Boards of U.S. Bank and the Central Valley Fund and served as the Vice Chairman of the Board of Directors for SunTherm Energy. He previously served on the Board of Directors for thope Environmental Power Corporation, an alternative energy, renewable biogas company. Hatamiya graduated from Harvard University with a BA in Economics. In addition, he earned his MBA. from the Anderson Graduate School of Management at UCLA, and his JD from the UCLA School of Law.

ISMAEL (ISH) HERRERA*Director, Regional Stewardship, CA Forward*

Herrera coordinates member activities of the California Stewardship Network (CSN) to advance the policy initiatives of CA Fwd and the California Economic Summit. Herrera spent 10 years at the Office of Community and Economic Development at California State University, Fresno, most recently as its

Executive Director, and as Lead Executive for the California Partnership for the San Joaquin Valley. In 2010, he helped launch the nationally-recognized San Joaquin Valley Rural Development Center, a "one-stop hub" for entrepreneurs, small businesses, local government, school districts, and nonprofits to access a range of technical assistance and resources. Herrera was one of twenty-five people nationally chosen to participate in the 2018-2019 Business Alliance for Local Living Economies Fellowship. Herrera has served on the Mendota Unified School District Board of Trustees, the Fresno County Board of Education, and currently serves on Kerman's City Council and the Recreation & Community Services Commission. Herrera earned two bachelor's degrees in Sociology and Chicano/Latino Studies from the University of California, Irvine and a Master's degree in Education Policy and Management at the Harvard Graduate School of Education.

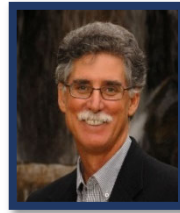
ERIC HOLST*Associate Vice President, Ecosystems Program, Environmental Defense Fund*

A fourth-generation Californian, Eric is an ecologist with expertise in developing strategies for wildlife conservation and habitat restoration on working forests, farms and ranches. As a child, Eric was surrounded by national parks and working lands, which inspired his work on forests, farms and the

ecosystems that surrounded them both. Eric works to establish productive partnerships with farmers and ranchers, putting EDF at the forefront of collaborative conservation efforts. He was principal at Holst Conservation Consulting from 2004 to 2006 and served as executive director of the Resources Legacy Fund in 2004. Holst was program officer at the Doris Duke Charitable Foundation from 1999 to 2003 and was a manager at Conservation Agriculture Program at the Rainforest Alliance from 1996 to 1999. He earned a MS degree in environmental management from Duke University.

JERRY LOHR*Founder, J. Lohr Vineyards and Wines*

Jerry graduated from South Dakota State University in 1958, received an M.S. from Stanford in 1959, and completed all coursework for a Ph.D. in civil engineering by 1961 before joining the Air Force. As an Air Force captain, he was posted as a research scientist at the NASA Ames Research Center, Moffett Field, from 1961-1964. Returning to civilian life, Jerry opened a land development and custom home building business. But his passion for farming and an appreciation of wine soon led him to take on a new challenge: winegrowing. Jerry has been producing wine for over 40 years. He has been active in many industry organizations and philanthropy at SD State, UC Davis and California Poly Tech at San Luis Obispo. His three children are now active co-owners of the vineyard and wine business.

MIKE MELLANO*Chairman of the Board and Vice President of Farming, Mellano & Company*

Mike farms cut flowers and cut foliage on 400 acres in two locations in north San Diego County including overseeing farming activities at "The Flower Fields" an agritourism site in Carlsbad, CA. He is past President for the San Diego County Farm Bureau, chairman for the California Cut Flower Commission (CCFC) as well as the chair of their Grower, Research and Economic Development Committee, USDA Floriculture Research Initiative Task Force, a Director for the Kee Kitayama Research Foundation. Mellano is a board member for the American Floral Endowment and represents UC on the Council for Agricultural Research, Extension and Teaching (CARET). He received a Ph.D. in Plant Pathology from UC Riverside in 1988.

CORINNE MARTINEZ*Partner, Martinez Family Limited Partnership and Berryessa Gap Vineyards*

Corinne is President and Chief Operating Office of Berryessa Gap Vineyards, a small boutique family owned and operated winery in Winters, CA. Corinne grew up in Winters where she worked for family farming operations from an early age. She is also a limited partner in the Martinez Family Limited Partnership which owns several hundred acres of walnuts and prunes in Yolo and Solano Counties. Corinne's initial career was in technology and business solutions working for over 20 years at Microsoft. Prior to joining Microsoft, Corinne was Co-founder and Director of Evolve Software, a start-up pioneering the Professional Services Automation industry. Corinne earned a BA Degree in English from the University of California, Berkeley and a MBA Degree from the University of Chicago, Booth School of Business.

DINA MOORE*Partner, Lone Star Ranch*

Dina partners with her husband Mark to operate Lone Star Ranch, a commercial cattle ranch and non-industrial timber business in central Humboldt County. They have built a sustainable business enterprise that allows for the 6th generation to make a living ranching. Dina has been actively involved in restoration efforts in the Van Duzen watershed, as a founding member of YES (Yager/Van Duzen Environmental Stewards), a ranching landowner-led watershed group. From 2001-2004 she served on the North Coast Regional Water Quality Control Board. She is a graduate of the California Agricultural Leadership Program and was recognized in 2001 by the Agricultural Education Foundation for her leadership in environmental and natural resources stewardship. In 2008 Mark and Dina received the Humboldt/Del Norte Cattleman of the year award and in 2008 the Buckeye Stewardship award. Dina attended UC Davis, has studied environmental dispute resolution at Humboldt State University.

SOAPY MULHOLLAND

Principal, Sopac & Associates LLC



Soapy is the former President of Sequoia Riverlands Trust, a regional nonprofit land trust dedicated to strengthening California's heartland and the natural and agricultural legacy of the southern Sierra Nevada and San Joaquin Valley. During her nearly 20 years at its helm, Mulholland guided

the organization from inception to its current status as a nationally recognized and accredited Land Trust. Her love of agriculture and the Sierra foothills motivated her to relocate from San Diego to Springville in 1993, where she has owned and managed ranches and a small citrus operation since 1989. She has been a real estate developer and has served on numerous boards and councils up and down the state of California, including the Board of Directors for the Tejon Ranch Conservancy, California Agricultural Leadership Program, Leavens' Ranches and the Pacific Lands Stewardship Council. She previously served on the Central Valley Regional Water Quality Board and remains active in water policy throughout the state. She holds an undergraduate degree from UC Berkeley and a graduate credential from UCLA and is a graduate of the California Agricultural Leadership Program.

SHARON NANCE

Assistant State Conservationist, USDA Natural Resources Conservation Service (retired)



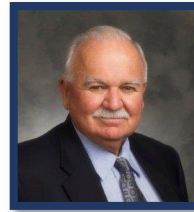
Sharon Nance retired in fall from her position as Assistant State Conservationist for Field Operations in Fresno, California. Her experiences in USDA and NRCS include working with the Civil Rights Division, Legislative Affairs Office, Programs, the Outreach Division and was the USDA StrikeForce

Coordinator for eight western states. She began her career with USDA as California's Rural Sociologist working with the Central Valley's Southeast Asian fruit & vegetable producers. She has aided Tribal Nations with their "Seven Generation Plan" and was invited to conduct sociological observations in the Micronesian Islands. While serving as the California NRCS Environmental Justice Coordinator, she assisted EPA/EJ conduct Public Participation Stakeholder sessions throughout California. Over the last 15 years she has continued her work in Outreach, training NRCS staff to develop and lead Cadres on Extending Outreach to All Communities. Sharon is Past President of National Association of Black Natural Resource Conservation Service employees (ORG), and a life member and the American Indian & Alaskan Native Association of NRCS employees and Equality USDA. She has a bachelor's degree in Psychology and earned a master's degree in Education and her

PhD in Rural Sociology & Agricultural Economics from The Ohio State University. Sharon and her partner, Carolyn Agrifoglio, will be relocating to Oregon to live near their son and his wife.

FRED RUIZ

Chairman Emeritus and Co-Founder, Ruiz Food Products, Inc.



In 1964, Fred and his father, Louis, cofounded Ruiz Food Products, Inc., selling authentic frozen Mexican foods—burritos, enchiladas and tamales—to local grocery stores. Today, their El Monterey brand is the #1 frozen Mexican food in the nation, and Ruiz Foods has grown to employ more than

2,500 employees. In 1983, Fred and Louis received the U.S. Small Business Persons of the Year Award from President Ronald Reagan in the Rose Garden of the White House. Fred serves on the Board of Directors of Ruiz Foods and is an active member of the California business community. He served 12 years as a Regent for the University of California and also the Board of Directors for McClatchy News. He currently serves on the Board of The California Chamber of Commerce and the Campaign for College Opportunity. In 2008, Ruiz received the American Association of Community Colleges' Outstanding Alumni Award.

ALEJANDRA SANCHEZ

Corporate Social Responsibility Marketing Manager, Driscoll's

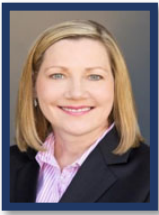


Alejandra has spent the past nine years identifying opportunities to leverage the private sector's scale to form strategic partnerships and sourcing strategies as mechanisms to build a more sustainable and equitable food system. She has worked with global commodity supply chains, major food retailers, and

conducted research on food policies and food systems infrastructure. Her experience has also encompassed corporate sustainability policies, crop management, agricultural sustainability, risk management, corporate communications, advocacy, and community outreach. Ms. Sanchez has a master's degree from UC Davis in International Agricultural development with a specialization in Agricultural and Resource Economics and received a Research and Innovation Fellowship for Agriculture from the UC system. She served with International Center for Tropical Agriculture (CIAT) in Vietnam as a graduate student researcher and most recently served as the Sustainability Manager at Taylor Farms. Alejandra has served on various sustainability boards and coalitions including Sustainable Conservation, McDonalds, and United Fresh. She currently sits on the Board of Directors for the Monterey County Food Bank.

KATHIE SOWA

*Senior Vice President, Commercial Banking Executive
Bank of America*



Kathie Sowa leads commercial banking teams serving clients >\$50 million in sales revenue in the Central Valley and Central Coast of California for Bank of America Merrill Lynch. This includes clients from Redding to Bakersfield and Salinas/Monterey. Kathie is active in the banking industry and the Sacramento community. She was the 2017/18 board chair for the Western Bankers Association and continues to serve on the board. Kathie serves on the Board of Advisors for the University of California, Davis. Kathie has also served on the site board of City Year Sacramento for 7 years serving as the site board chair for 2 years. City Year deploys more than 60 skilled AmeriCorps members in seven schools working to increase student success and graduation rates. She previously served nine years on the board of the United Way California Capital Region. Kathie graduated with a BBA in Real Estate Finance from Eastern Michigan University and an MBA from Loyola Marymount University. She is a graduate of the Pacific Coast Banking School and is a certified Six Sigma Greenbelt.

CONNIE STEWART

*Executive Director of Initiatives, Humboldt State
University*



Connie Stewart is a former Mayor and City Councilwoman of Arcata, California. She is also the former Executive Director at the California Center for Rural Policy (CCRP) a research center committed to informing policy, building community, and promoting the health and well-being of rural people and environments. She now serves as Chief Policy Advisor for CCRP. The Center works on policy for health and human services; broadband deployment; wealth creation and economic development; food systems and food security; and data and evaluation services for community programs. Connie received the 2017 Rural County Representatives of California President's Award, for her work to bring broadband to rural California communities. She also was honored with the 2014 "Nonprofit Leader Achievement Award" from the Northern California Association of Nonprofits and the 2014 "Innovations in Networking Award for Gigabit/Broadband Applications" from the Corporation for Education Network Initiatives in California (CENIC). She is a member of Aspen Institute Community Strategies Group's Rural Development Innovation Group and serves on the Board of Directors of Redwood Acres Fairground and the Open Door Community Health Center's Board of Directors.

KERRY TUCKER

Chief Strategic Counsel, Nuffer, Smith, Tucker, Inc.



Kerry created one of the country's first issue anticipation system followed by the first behavioral framework for the public relations field, both captured in a textbook adopted by hundreds of colleges and universities all over the world. He co-founded Food Foresight, a trends intelligence system for the agri-food chain and serves on several university boards. He spends most of his professional life helping companies decide what they want to be when they grow up. His coast-to-coast North American agri-food clientele includes companies, cooperatives, trade groups and promotion boards. Kerry offers expertise in the design and execution of strategies for the future, cultivating supportive stakeholder relationships and fueling the quid pro quo exchange. We are a partner firm in the WORLDCOM network, a consortium of 104 strategically selected independent public relations firms located in 91 cities, 5 continents worldwide.

MARY-ANN WARMERDAM

*Sr. Vice President/Government Affairs, Rural County
Representatives of California (RCRC); Deputy
Controller, Environmental Policy, California Controller's
Office; and Managing Director, Milkshed Partners, LLC*



Mary-Ann has worked on agricultural, natural resource and rural policy issues, representing both public and private sector entities. She recently re-joined RCRC to lead their Government Affairs Team. Prior to that, she was with the Office of State Controller Betty Yee as Deputy, Environmental Policy. Before joining the Controller's Office, she served as Senior Advocate, Natural Resources and Water, for RCRC. She also spent several years as U.S. Regulatory Lead with the Clorox Company working with key state and federal agencies on chemical management, pesticide, water quality and related environmental issues. In addition to serving two Governors as the Director of California Department of Pesticide Regulation in the early 2000's, Mary-Ann was General Manager of Yolo County's Flood Control and Water Conservation District; Director of California Farm Bureau Federation's Public Affairs; and PG&E's State Affairs Office. Mary-Ann is a partner in the family farm and real estate investment firm and farms with her husband in Yolo County. She has a MBA and a BS, summa cum laude, from CSU Fresno; completed the California Agricultural Leadership Program and the Kennedy School of Government's Executive Certification Program. She serves on the Yolo Land Trust.

RODGER WASSON*Owner and President, Wasson & Associates*

Roger formed this Northern California-based consulting firm in 2005 to offer consultancy to the agri-food industry. Using the latest scientific research results and emerging trends in health and nutrition, Wasson provides clients with transformation counsel covering all aspects of producing and marketing superior products. The company manages the Tomato Products Wellness Council on behalf of growers, processors, and brand companies. The host of the Farm To Table Talk podcast, Rodger and his partner and son, Alec Wasson, focus on the interface between farmers and consumers. Rodger has successfully managed marketing programs for almonds, strawberries, tomatoes, beef, pork, lamb and wool across the US and globally. Their Illinois family farming heritage led them to launch the podcast as a bridge to better understanding of farm to table perspectives.

PAUL WENGER*Owner, Wenger Ranch*

A third-generation farmer, Paul farms almonds and walnuts on the family farm, which includes property purchased by his grandfather in 1910. His farming operations also include sharecropping, custom farm work and walnut hulling. Paul was elected president of the California Farm Bureau Federation in December 2009 and was elected to a fourth term in 2015. He is a former president of the Stanislaus County Farm Bureau. In January 2011, he was elected to the American Farm Bureau Federation board of directors and was re-elected in 2013 and 2015. Wenger attended Modesto Junior College before transferring to Cal Poly, San Luis Obispo, where he earned a degree in animal science. Wenger has been active in community affairs, serving on the Salida Volunteer Fire Department, the Hart-Ransom School Board of Trustees, and the Stanislaus Land Trust and Agricultural Pavilion boards.

CHER WATTE ANGULO*Executive Director, Buy California Marketing Agreement*

Cher is Executive Director of the Buy California Marketing Agreement (BCMA) which manages the California Grown marketing campaign. Before becoming executive director of BCMA, Cher was executive director of the California Asparagus Commission and director of international trade policy at the California Department of Food and Agriculture. She was also appointed manager of the department's agricultural export program by then-Gov. Pete Wilson. Prior to her CDFA appointment, Watte was the director of national affairs and research for the California Farm Bureau Federation and legislative assistant to congressman Tony Coelho on the U.S. House of Representatives committee on agriculture. She is a former member of the Council for Agricultural Research, Extension, and Teaching (CARET) and the US Department of Agriculture's agricultural trade advisory committee on fruits and vegetables.

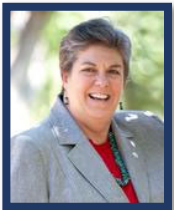
STUART WOOLF*President and Chief Executive Officer, Woolf Enterprises, Inc.*

Stuart operates a family-owned operation that was named the 2004 Agribusiness of the Year in Fresno County, and the Family Business of the Year by the Family Business Institute at Fresno State University. He serves as the managing partner for two related entities; Harris Woolf California Almonds – a processor and handler of raw almonds - and Los Gatos Tomato Products which manufactures bulk tomato paste for industrial users. He also owns Coastal Green Vegetable Company in Oxnard, California. Stuart received a bachelor's degree in liberal arts from the University of California at Berkeley and an MBA at Boston College and has served as chairman of the California League of Food Processors and the Almond Board of California. He is past member of the Young Presidents Organization's Golden Gate Chapter and currently serves on the board of Ruiz Food Products. Stuart married his wife Lisa in 1984 and they have five children.

EX-OFFICIO MEMBERS

WADE CROWFOOT*Secretary, California Natural Resources Agency*

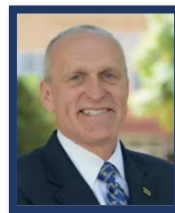
Wade Crowfoot was appointed California Secretary for Natural Resources by Governor Gavin Newsom in January 2019 where he oversees an agency of 19,000 employees charged with protecting and managing California's diverse resources. As a member of the Governor's cabinet, he advises the Governor on natural resources and environmental issues. Crowfoot brings over two decades of public policy and environmental leadership to the office, with expertise in water, fisheries, climate and sustainability issues. He most recently served as chief executive officer of the Water Foundation, a nonprofit philanthropy that builds shared water solutions for communities, economy, and the environment across the American West. Crowfoot received a bachelor's degree in political science from the University of Wisconsin-Madison in 1996 and earned a master's degree in public policy from the London School of Economics in 2004, where he graduated with honors.

GLENDA HUMISTON*Vice President, UC ANR*

As Vice President of University of California Agriculture and Natural Resources (UC ANR), Dr. Glenda Humiston brings over 25 years of policy development and program implementation supporting sustainability, including time as a Peace Corps volunteer in Tunisia and as a consultant on environmental and agricultural issues throughout the western states. She served President Obama 2009-2015 as the California State Director for USDA Rural Development. From 1998-2001 she served President Clinton as Deputy Under Secretary for Natural Resources and Environment at USDA. Glenda managed the Sustainable Development Institute at the 2002 World Summit for Sustainable Development in South Africa and the 2006 World Water Forum in Mexico City. She earned her PhD in Environmental Science, Policy and Management from UC Berkeley; a Master's in International Agricultural Development from UC Davis and a Bachelor's degree in Animal Science from Colorado State University.

KAREN ROSS*Secretary, California Department of Food and Agriculture*

Karen Ross was appointed Secretary of CDFA by Governor Jerry Brown in 2011 and reappointed by Governor Gavin Newsom in 2019. She has extensive leadership experience on diverse agricultural issues nationally, internationally and California. Prior to CDFA, Secretary Ross served as chief of staff for USDA Secretary Tom Vilsack. She served as President of the California Association of Winegrape Growers from 1996-2009, and as Vice-President of the Agricultural Council of California from 1989-1996. Among Karen's many achievements at CAWG was the development of the nationally-recognized Sustainable Winegrowing Program, which assists wine grape growers in maintaining the long-term viability of agricultural lands and encourages them to provide leadership in protecting the environment, conserving natural resources, and enhancing their local communities. Karen grew up as a 4-H kid on a farm in western Nebraska. She and her husband, Barry, own 800 acres of the family farm where her younger brother, a fourth-generation farmer, grows no-till wheat, feed grains, and raises beef cattle. The Secretary has a Bachelor of Arts degree from the University of Nebraska-Lincoln and is a graduate of the Nebraska Ag Leadership Program.

KIM WILCOX*Chair, UC ANR Governing Council and Chancellor, UC Riverside*

Kim Wilcox was appointed as the ninth chancellor of UC Riverside in 2013. Under his leadership, UC Riverside became a charter member of the University Innovation Alliance, a collaboration of major public research universities in America seeking to improve student graduation rates and outcomes across all socio-economic and ethnic backgrounds. He served as provost of Michigan State from 2005 to July 2013, dean of the College of Liberal Arts and Sciences at the University of Kansas, from 2002 to 2005, and president and chief executive officer of the Kansas Board of Regents from 1999 to 2002. A first-generation college graduate, Kim earned his BA in Audiology and Speech Sciences from Michigan State University. He holds MS and PhD degrees in Speech and Hearing Sciences from Purdue University.

ACADEMIC ADVISORS

DAVID ACKERLY

*Dean, Rausser College of Natural Resources,
UC Berkeley*



David Ackerly became Dean of UC Berkeley's Rausser College of Natural Resources in 2018. He joined the UCB Department of Integrative Biology from Stanford in 2005, held the Gill Chair in Natural History from 2010 to 2015, and served as associate dean of the College of Letters and Science's Biological Sciences Division. As a plant ecologist and evolutionary biologist, David brings together multidisciplinary teams for research in climate change, biodiversity, and ecology. He is a senior fellow at UCB's Institute for Data Science and a recipient of the Graduate Division's Distinguished Faculty Mentor Award. David received his BA in Biology from Yale in 1984 and his doctorate from Harvard in 1993. He is a fellow of the California Academy of Sciences and the Ecological Society of America.

HELENE DILLARD

*Dean, College of Agricultural and Environmental
Sciences, UC Davis*



Helene Dillard became Dean of the College of Agricultural and Environmental Sciences at UC Davis in 2014. Her international leadership included consultations, presentations and scientific exchanges in China, Central America, South America, the European Union and Zimbabwe. Prior to her appointment at UC Davis, Dillard was on the faculty at Cornell University from 1984 to 2014 as a professor of plant pathology and served as Director of Cornell Cooperative Extension from 2002 to 2014. She received the New York Farmers Medal and the Outstanding Faculty Award from CALS in 2013. Helene Dillard was born and raised in San Francisco, California. She completed her BS in biology of natural resources at UC Berkeley, an MS in soil science at UC Davis, and a PhD in plant pathology at UC Davis.

MARK D. STETTER

Dean, Veterinary Medicine, UC Davis



Mark Stetter became dean of the UC Davis School of Veterinary Medicine (SVM) in October 2021. His areas of research and treatment expertise are diverse within his primary emphasis on wildlife and zoo animals. From 2012 to 2021, Stetter was dean and professor in the College of Veterinary Medicine and Biomedical Sciences at Colorado State University. His significant contributions there were numerous and transformative. He helped drive the creation of a new medical education program in partnership with the University of Colorado School of Medicine and helped launch numerous Diversity, Equity and Inclusion (DEI) initiatives. In addition, he was instrumental in the college raising over \$370 million for new buildings, student scholarships, endowed positions, and research programs, among other uses. Stetter earned both his Bachelor of Science degree in biochemistry and his Doctor of Veterinary Medicine degree from the University of Illinois at Urbana-Champaign.

KATHRYN UHRICH

*Dean, College of Natural & Agricultural Sciences,
UC Riverside*



Kathryn Uhrich became Dean of the College of Natural & Agricultural Sciences at UC Riverside in 2016. Previously, she was Dean of Mathematical and Physical Sciences at Rutgers. Her research links chemistry with the life sciences and engineering disciplines to create bioactive, biodegradable polymers and devices for use in drug delivery, food safety and personal care. She holds over 50 patents, and her work has spawned several start-up companies. She is a Fellow of the American Chemical Society, the American Institute of Medical and Biological Engineering, and the National Academy of Inventors. As a first-generation college graduate, Dr. Uhrich earned her PhD in organic chemistry from Cornell University, and her BS in chemistry from the University of North Dakota. She received postdoctoral training at Bell Laboratories and Massachusetts Institute of Technology.