

1 FLOOR PLAN
1/8" = 1'-0"

2 ENLARGED CONDENSER UNIT PLAN
1/2" = 1'-0"

FLOOR PLAN SHEET NOTES

- THESE NOTES REFER TO THIS SHEETS ONLY
- A TYPICAL DIMENSIONS ARE TO C ONLY
- B REFER TO 3/A731 FOR BACKING PLATE REQUIREMENTS AND FRAMING OPENINGS
- C REFER TO A801 FOR PARTITION TYPES
- D REFER TO A601 FOR DOOR & WINDOW SCHEDULES
- E REFER TO A611 FOR FINISH SCHEDULE
- F REFER TO 4/A741 FOR TYPICAL DETAILS FOR FIRE EXTINGUISHER CABINET
- G NOT USED
- H WHERE DOOR IS NOT LOCATED IN DIMENSION OR DETAIL FROM AN INTERVENING WALL, DIMENSION WILL BE 4" FROM FACE OF STUD TO FACE OF DOOR JAMB
- J SEE SHEET A952 FOR INTERIOR SIGNAGE, SIGNAGE
- K NOT USED
- L FOR TYPICAL WALL ASSEMBLY, SEE 3/A701
- M FOR MAXIMUM OCCUPANT LOAD INFORMATION, SEE G003, G004 & A952
- N WHERE PLYWOOD IS REQUIRED ON PART OF THE INTERIOR SIDE OF WALLS FOR SHEAR, PLYWOOD SHALL CONTINUE FULL LENGTH AND HEIGHT OF WALL
- O EQUIPMENT STORAGE ROOM 11 SHALL HAVE 1-HOUR RATED WALLS AND CEILING. SEE DETAIL 6/A801

LEGEND

- (XX) DOOR TYPE, SEE DOOR & WINDOW SCHEDULE A601 SHEET
- PARTITION TAG

FLOOR PLAN KEY NOTES

- ① RECESSED FIRE EXTINGUISHER CABINET
- ② ACCESSIBLE HAND WASH SINK
- ③ MOPSINK
- ④ LOCATION OF KNOX BOX. COORD W/ LOCAL FIRE AUTHORITY
- ⑤ SURFACE MOUNTED FIRE EXTINGUISHER
- ⑥ NOT USED
- ⑦ NOT USED
- ⑧ ELECTRICAL PANEL, SED
- ⑨ NOT USED
- ⑩ NOT USED
- ⑪ NOT USED
- ⑫ RWL, SEE 10/A703
- ⑬ NOT USED
- ⑭ NOT USED
- ⑮ HYDRAULIC HANGER DOORS

OFFICE OF STATE FIRE MARSHAL APPROVED

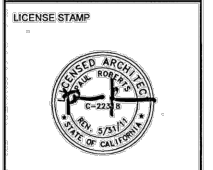
Approval of this plan does not authorize or approve any omission or deviation from applicable regulations. Final approval is subject to field inspection. One set of approved plans shall be available on the project site at all times.

Reviewed by: *BILL ROBERTS* 5-25-11



690 WALNUT AVENUE
SUITE 220
VALLEJO, CA 94592
T: 707-557-2215 F: 707-557-9937

OFFICIAL DSA STAMPED COPY ON FILE AT JOBSITE



HOPLAND REC FIELD LABORATORY AND MULTIPURPOSE FACILITY
4070 UNIVERSITY ROAD
HOPLAND, CALIFORNIA 95449

DRAWING STATUS

BID SET

03.30.11

REVISIONS	Sym.	Description	Date

DRAWN BY	DRAFTER
CHECKED BY	CHECKER
SCALE	1/8" = 1'-0"
JOB NUMBER	3015.00

Copyright © 2011
All ideas, designs, arrangements and plans included or represented by this drawing are owned by and the property of Paul Roberts & Partners, Inc. and used in accordance with the agreement for use on, and consistent with, the specific project. None of such ideas, designs, arrangements or plans shall be used by, or disclosed to any person by, or otherwise in any manner, without the written permission of PR&P, Inc.

SHEET TITLE
FLOOR PLAN
SHEET NUMBER
A104

H 1-10-2012

REVISIONS		
Sym.	Description	Date
△		
△		
△		
△		
△		

DRAWN BY	SA
CHECKED BY	PR
SCALE	1/8" = 1'-0"
JOB NUMBER	3015.00

Copyright © 2011
All ideas, designs, arrangements and plans indicated or represented by this drawing are reserved for the use of Paul Roberts & Partners, Inc. and were created, evolved and developed in close and continuous cooperation with the project. None of such ideas, designs, arrangements or plans shall be used by or disclosed to any person by or disclosed to any person, firm or corporation for any purpose whatsoever without the written permission of PR&P, Inc.

BLDG ELEVATIONS SHEET NOTES

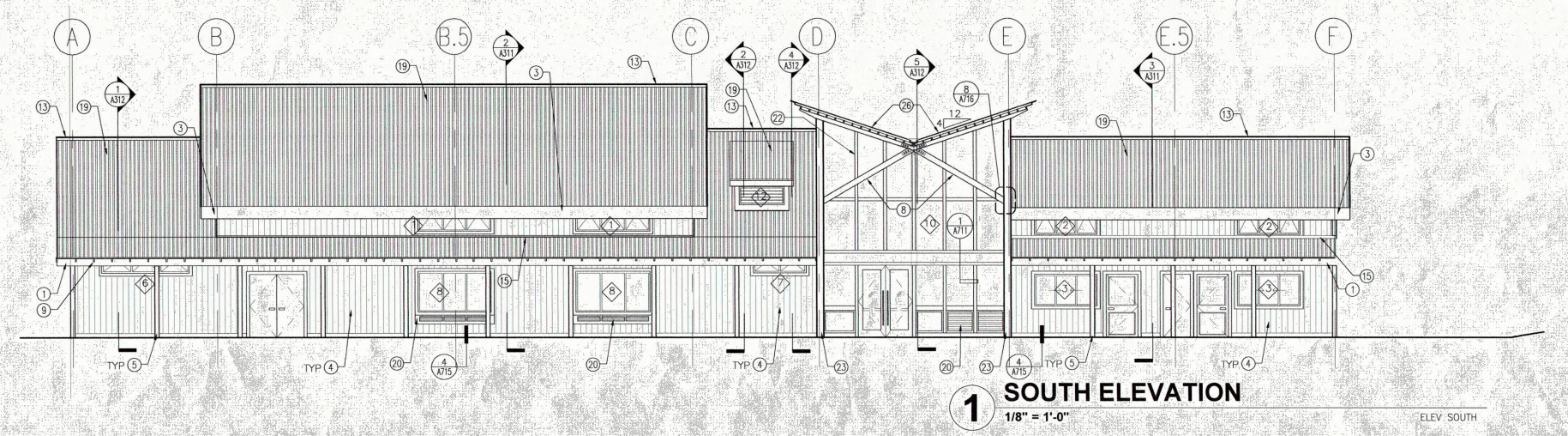
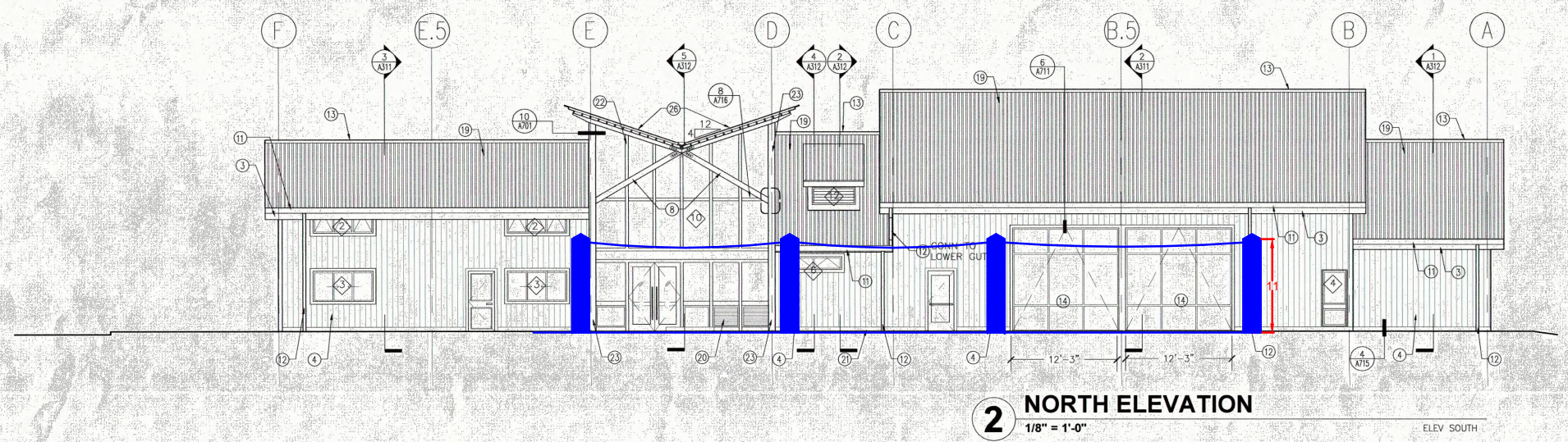
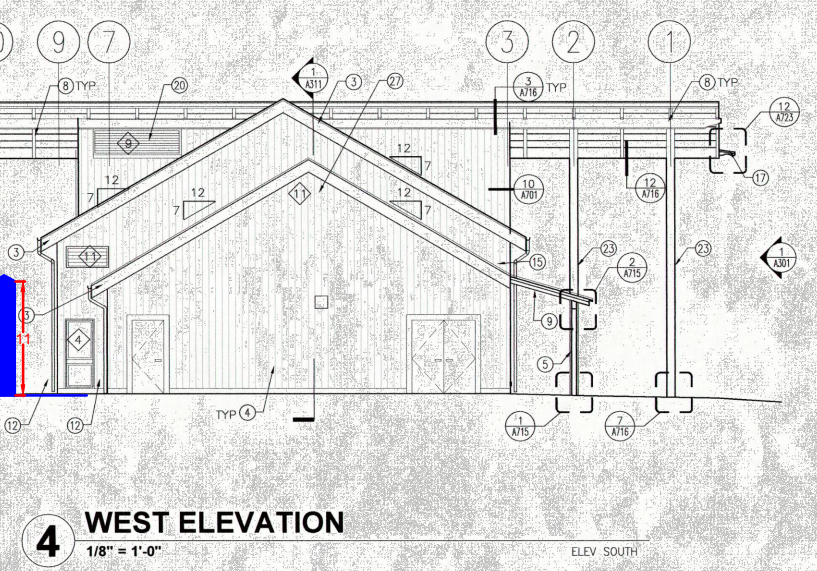
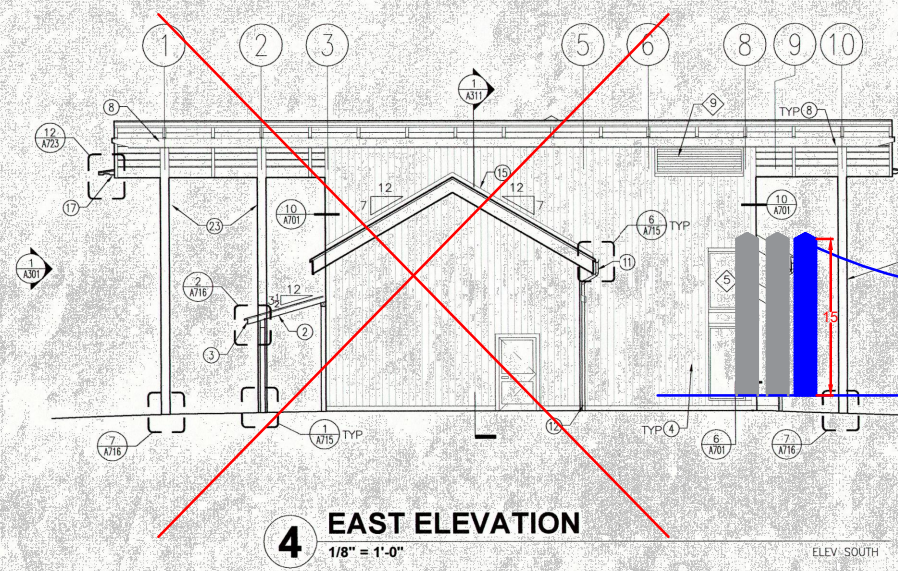
THESE NOTES REFER TO SHEETS 301 & 302 ONLY
A REFER TO A601 FOR DOOR & WINDOW SCHEDULE
B REFER TO A723 FOR RAIN GUTTER INFO

LEGEND

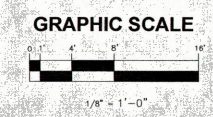
◇ WINDOW TYPE, SEE SHEET A601

BLDG ELEVATIONS KEY NOTES

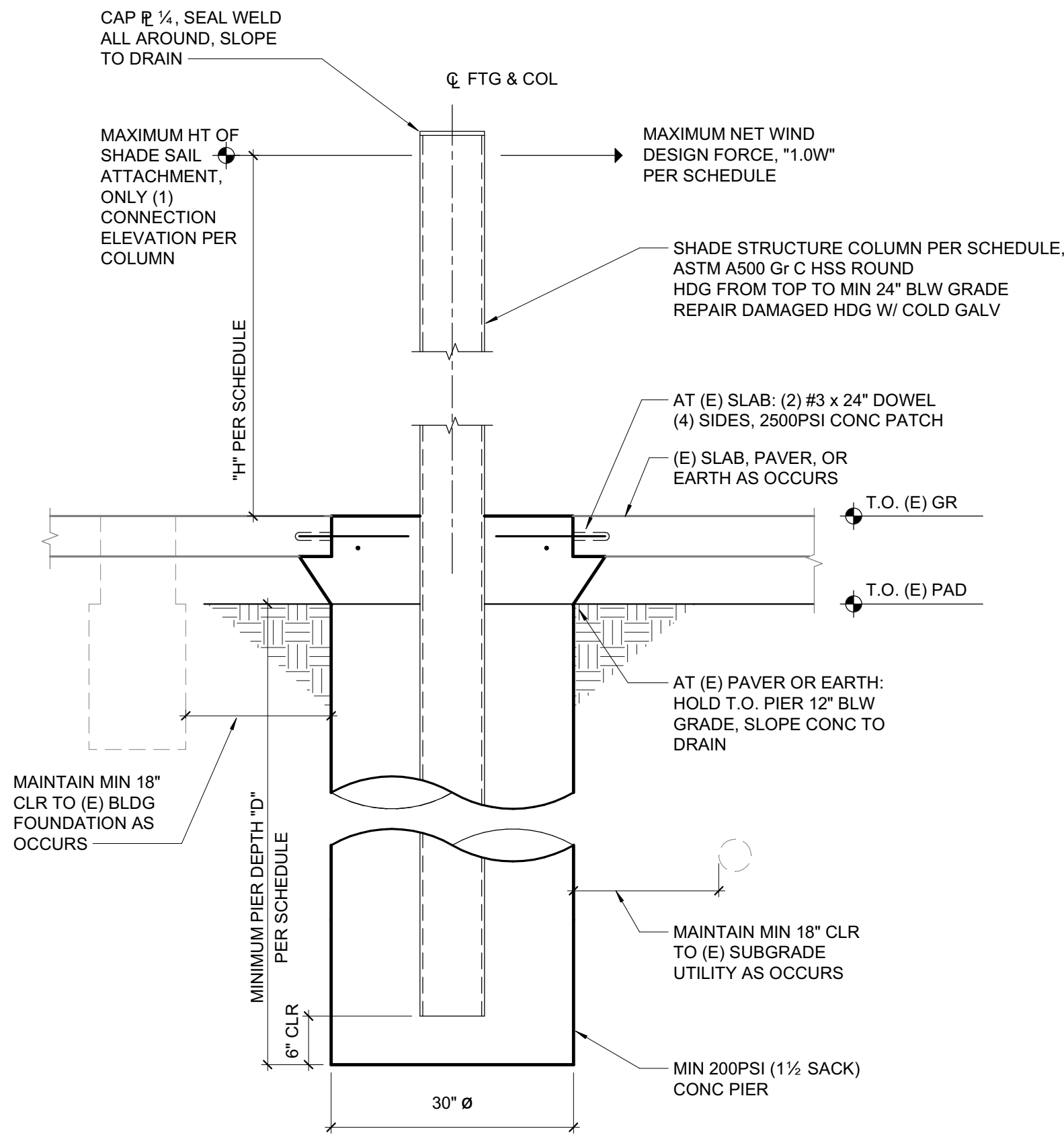
- ① WOOD BEAMS
- ② WOOD JOISTS
- ③ WOOD FASCIA
- ④ VERTICAL WOOD SIDING, TYP, SEE 3/A701
- ⑤ WOOD COLUMN
- ⑥ WOOD LEDGER
- ⑦ NOT USED
- ⑧ WOOD TRUSS SYSTEM
- ⑨ EXPOSED WOOD RAFTER TAILS
- ⑩ NOT USED
- ⑪ GALVANIZED METAL GUTTER, TYP
- ⑫ GALVANIZED METAL RWL, TYP
- ⑬ RIDGE VENT
- ⑭ HANGAR DOOR
- ⑮ GALVANIZED METAL FLASHING
- ⑯ NOT USED
- ⑰ RAIN WATER SPOUT
- ⑱ NOT USED
- ⑲ GALVANIZED METAL CORRUGATED ROOFING, TYP
- ⑳ OPERABLE ANODIZED ALUMINUM LOUVERS
- ㉑ NOT USED
- ㉒ MULLION
- ㉓ BUTTERFLY ROOF COLUMN, SSD
- ㉔ TYPICAL EDGE BEAM W/ FLASHING CAP, SEE 5/A723
- ㉕ NOT USED
- ㉖ BUTTERFLY ROOF, SSD
- ㉗ EXHAUST FAN VENT



OFFICE OF STATE FIRE MARSHAL
APPROVED
Approval of this plan does not authorize or approve any omission or deviation from applicable regulations. Final approval is subject to field inspection. One set of approved plans shall be available on the project site at all times.
Reviewed by: *[Signature]*
C.S.C.-11



12/5/2024 10:26:56 AM \\zfa.com\SR\Projects\2024\24423 Shippey Shade Structure\Drawings\24423_Shippey Shade Structure_S24.RVT



SHADE STRUCTURE COLUMN AND FOUNDATION SCHEDULE

ATTACHMENT HEIGHT H (FT)	SHADE STRUCTURE COLUMN SIZE	MAXIMUM NET FORCE 1.0W (KIPS)	MINIMUM PIER DEPTH D (FT)
15	HSS10.750x0.375	10.8	10
11	HSS8.625x0.375	8.2	9

- NOTES:**
- FABRIC, CABLES, HARDWARE, ETC ARE BY OTHERS.
 - COORDINATE COLUMN AND PIER LOCATIONS WITH EXISTING UTILITIES AND SITE FEATURES. VERIFY EXISTING CONDITIONS IN FIELD PRIOR TO DESIGN AND FABRICATION.
 - DESIGNED TO 2022 CBC, ASCE7-16.
 - PIERS DESIGNED TO 100% CAPACITY USING 2008 GEOTECHNICAL REPORT BY RGH CONSULTANTS FOR THE ADJACENT EXISTING BUILDING (REPORT 2605.01.04.1) = 350PCF OVER TWO PIER DIAMETERS. PASSIVE PRESSURE IGNORED OVER TOP 2 FEET FROM FINISHED GRADE. MINIMUM 8 FOOT EMBED.
 - PIERS DESIGNED AS NONCONSTRAINED AT SURFACE.
 - COLUMNS DESIGNED WITH NO DEFLECTION LIMIT AND TO APPROXIMATELY 80% OF FLEXURAL CAPACITY.
 - FINAL SHADE STRUCTURE DESIGN LOADS TO BE COMPARED AGAINST ABOVE TABLE. IF ANY EXCEEDANCE IS PROPOSED, CONTACT ZFA FOR REVIEW AND POSSIBLE REVISIONS.

THIS DOCUMENT AND THE IDEAS INCORPORATED HEREIN, AS AN INSTRUMENT OF PROFESSIONAL SERVICE, IS THE PROPERTY OF THE ENGINEER AND IS NOT TO BE USED, IN WHOLE OR IN PART FOR ANY OTHER PROJECT WITHOUT THE PRIOR WRITTEN AUTHORIZATION OF THE ENGINEER.

Revision Schedule		
#	Revision Description	Date

ZFA STRUCTURAL ENGINEERS
 250 d st | suite 200 zfa.com
 santa rosa ca 95404 707.526.0992
 zfa job no. 24423 copyright © 2024



PROJECT
SHIPPEY SHADE STRUCTURE
 4070 University Rd
 Hopland CA 95449

SHEET DESCRIPTION
SHADE STRUCTURE COLUMN & FDN

ENGR: DLD DATE: DEC 05, 2024
 PM: SCH

SHEET
S1

SHEET INDEX	
S1	SHADE STRUCTURE COLUMN & FDN