

Vlach



- One of the first Paradox clones to be micropropagated
- Vigorous



RX1

J. microcarpa X *J. regia*

- Resistance to *Phytophthora*
P. citricola and *P. cinnamomi*

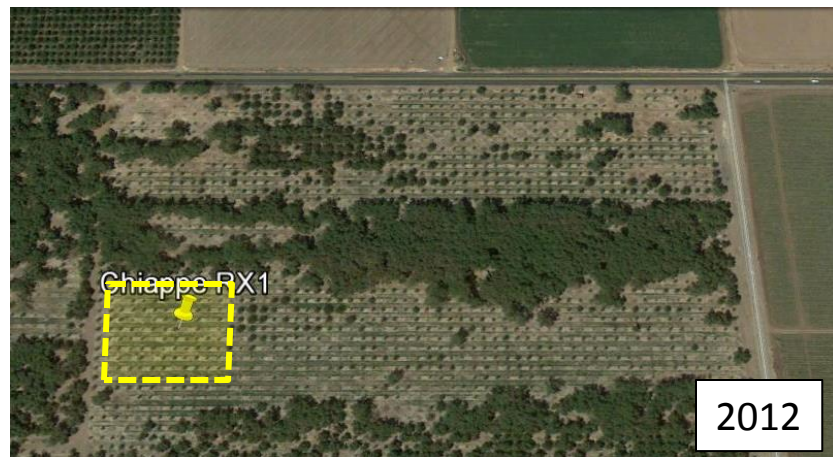
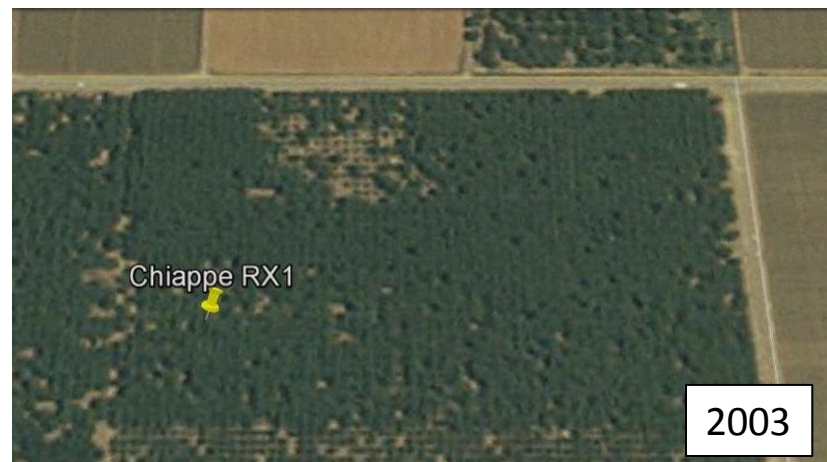
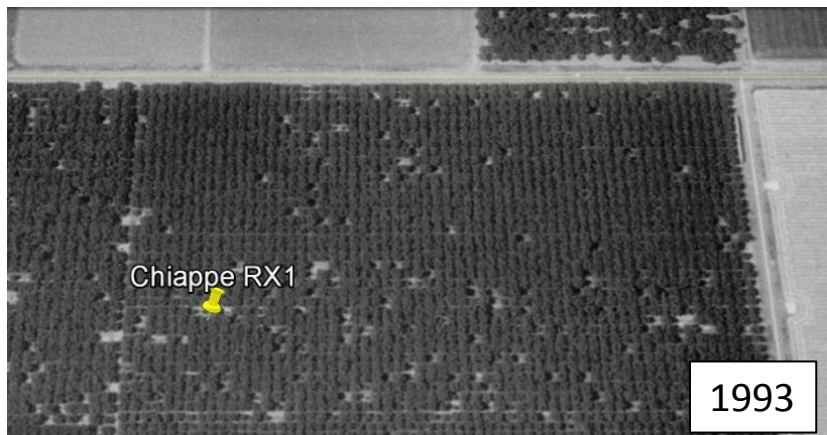


VX211

J. hindsii X *J. regia*

- Exceptional vigor
- Tolerant of nematodes (*P. vulnus*)





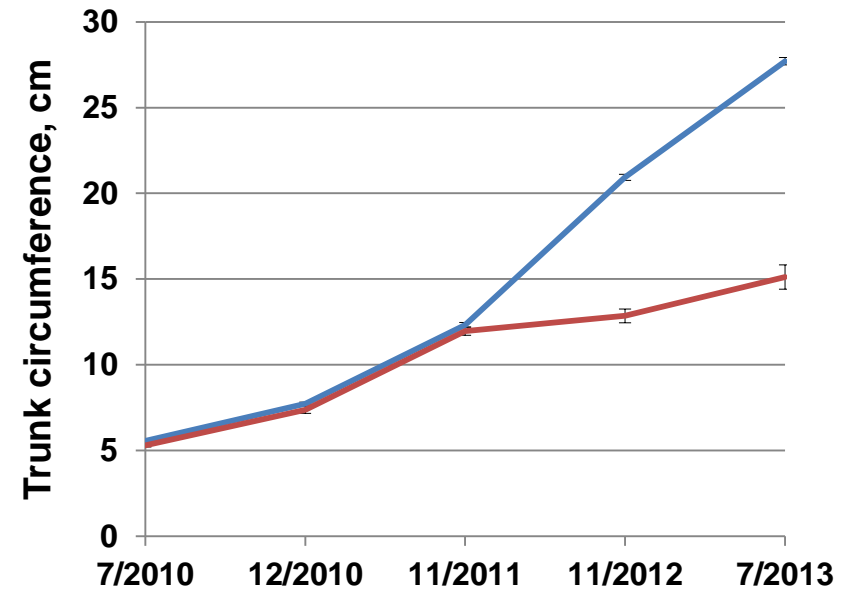
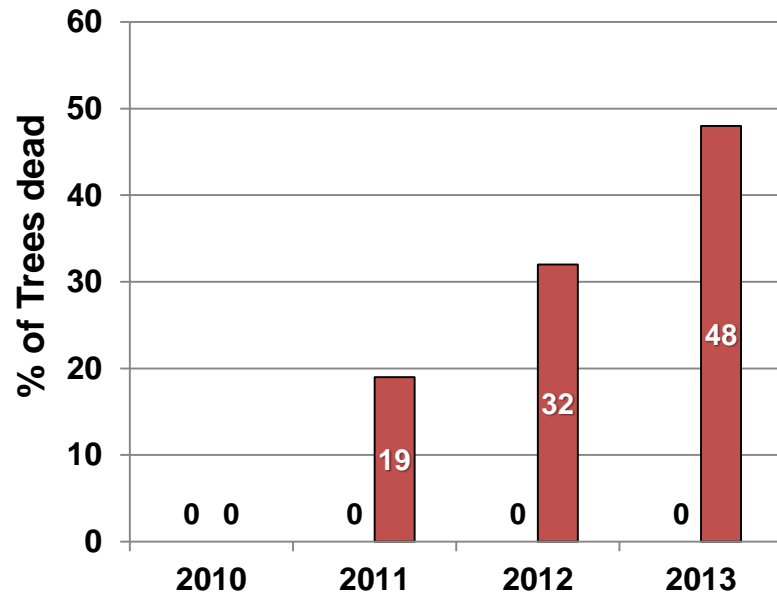
Farmington RX1 – Seedling Paradox Comparison

Planted March 2010



■ RX1

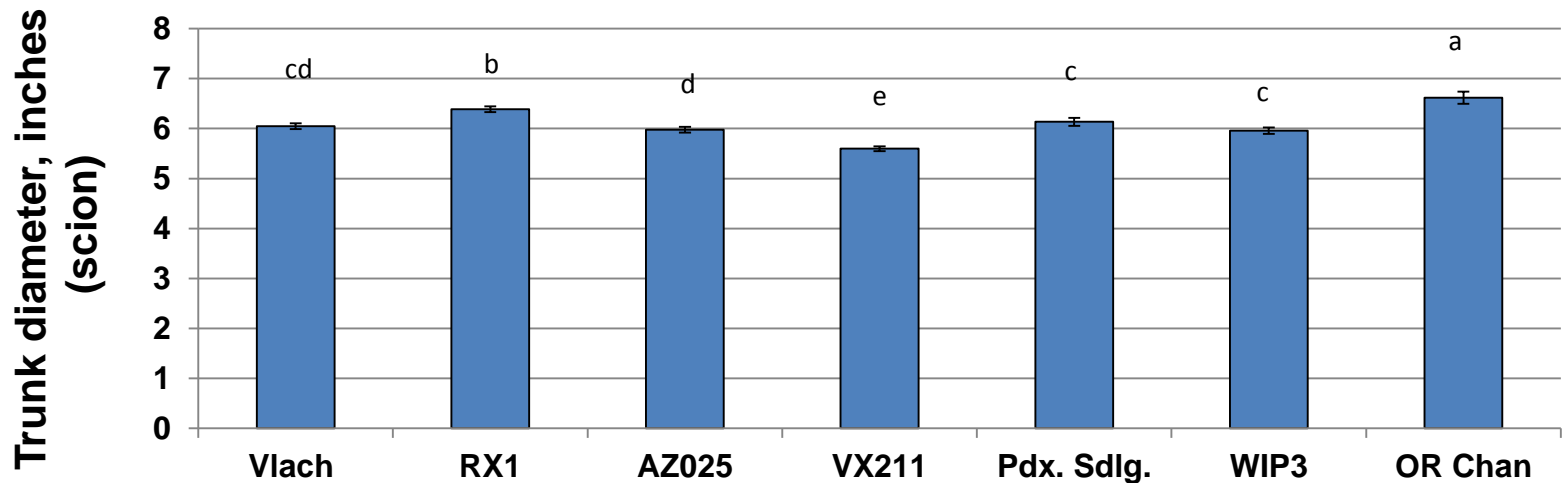
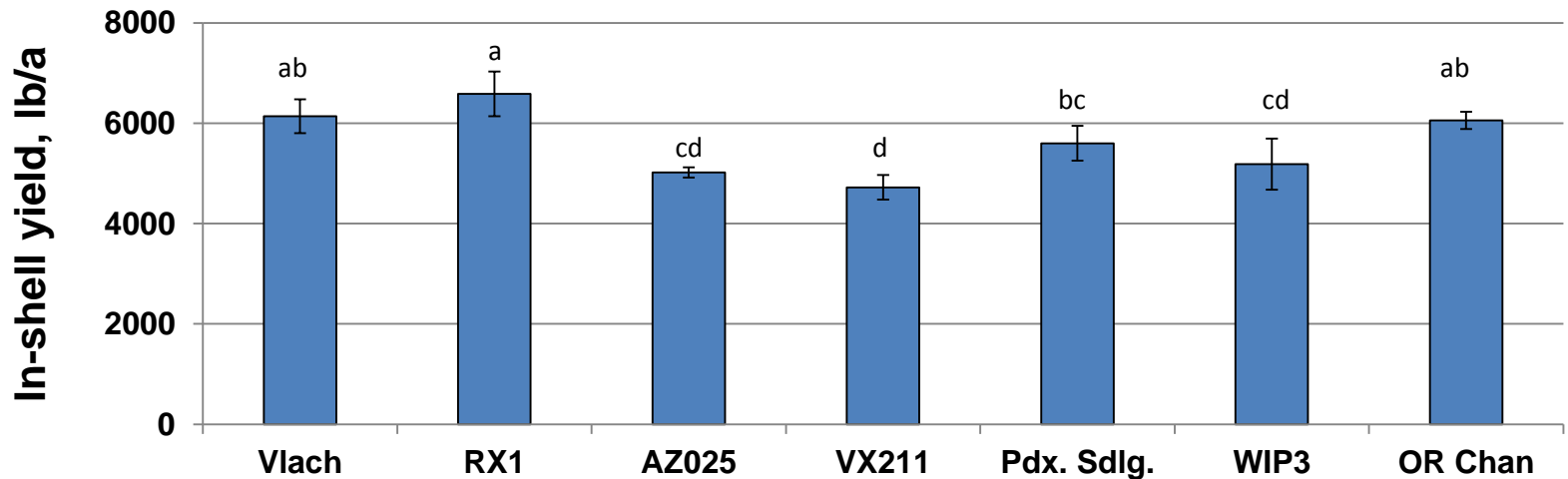
■ Sdlg



Root isolations confirm *P. cinnamomi* prevalent on dead trees

San Joaquin Clonal Rootstock Trial

6th Leaf Chandler



c

Mean separation by Fisher's Protected LSD, P=0.05