

California FireSafe Councils Education & Action

Plumas County FSC

Michael De Lasaux

UC Cooperative Extension

California FireSafe Council Overview

Erica Bisch

Executive Director

California Fire Safe Council

California FireSafe Councils Plumas County

Michael De Lasaux

Natural Resources Advisor

Univ. of California Cooperative Extension

Plumas-Sierra Counties

National Wildland/Urban Interface Fire
Education Conference
Denver, CO
November 2-4, 2006



Presentation Topics

- ◆ Introductory (who, where, when, why)
- ◆ What
 - educational efforts
 - planning activities,
 - community fuel reduction program
- ◆ Has it worked?



Mission Statement
"To reduce the loss of life and property resources caused by wildland fires through education and active participation."

www.plumasfiresafe.org

Participants

- ◆ Citizens as property owners
- ◆ Homeowner Associations
- ◆ Plumas County Fire Warden
- ◆ Plumas County Fire Chiefs
- ◆ Plumas County Planning
- ◆ Plumas Corporation
- ◆ US Forest Service
- ◆ Calif. Dept. of Forestry & Fire Protection
- ◆ UC Cooperative Extension



Where is Plumas County?

Northern Sierra
Rural
Mostly forested
Mostly public land



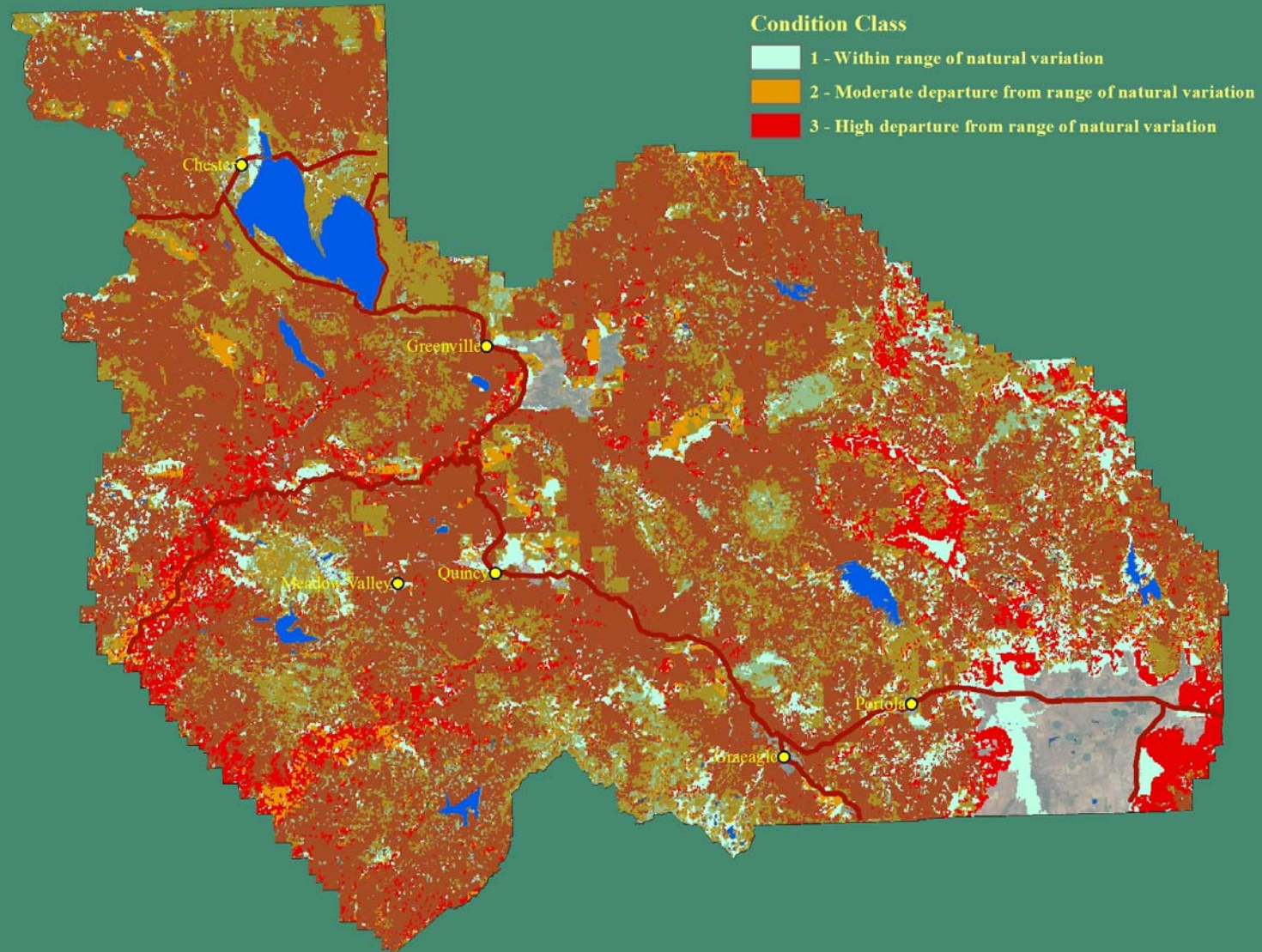
Forest Cover



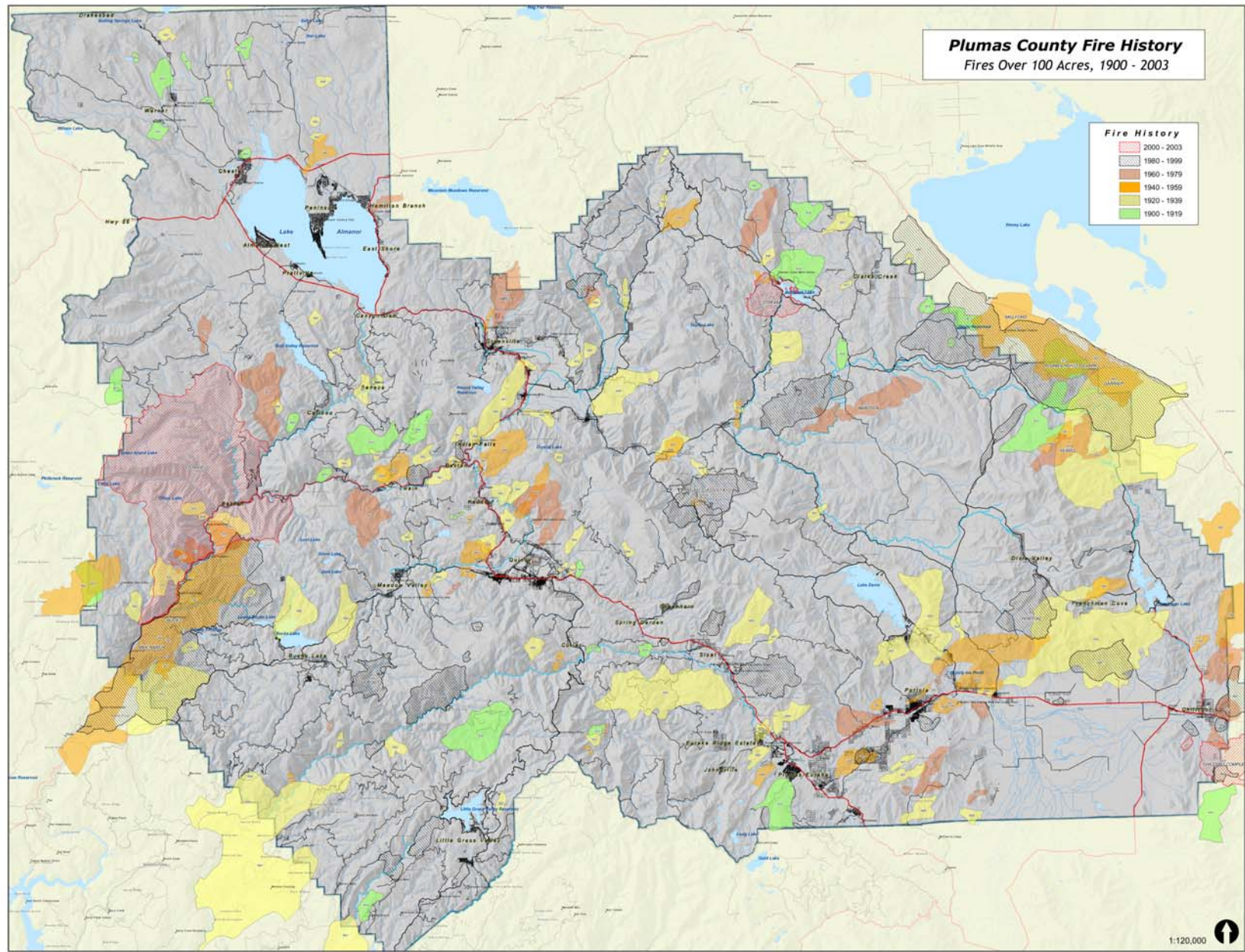
National Forest



Condition Class



Plumas County Fire History



Plumas County FSC

- ◆ Education
- ◆ Planning
- ◆ Fuel Reduction



Education

- ◆ Firewise® Consultations
- ◆ Homeowner/Property owner meetings
- ◆ Newspaper Tabloid
- ◆ Video Distribution
- ◆ Event Displays
- ◆ Planning & Building display
- ◆ Website (www.plumasfiresafe.org)

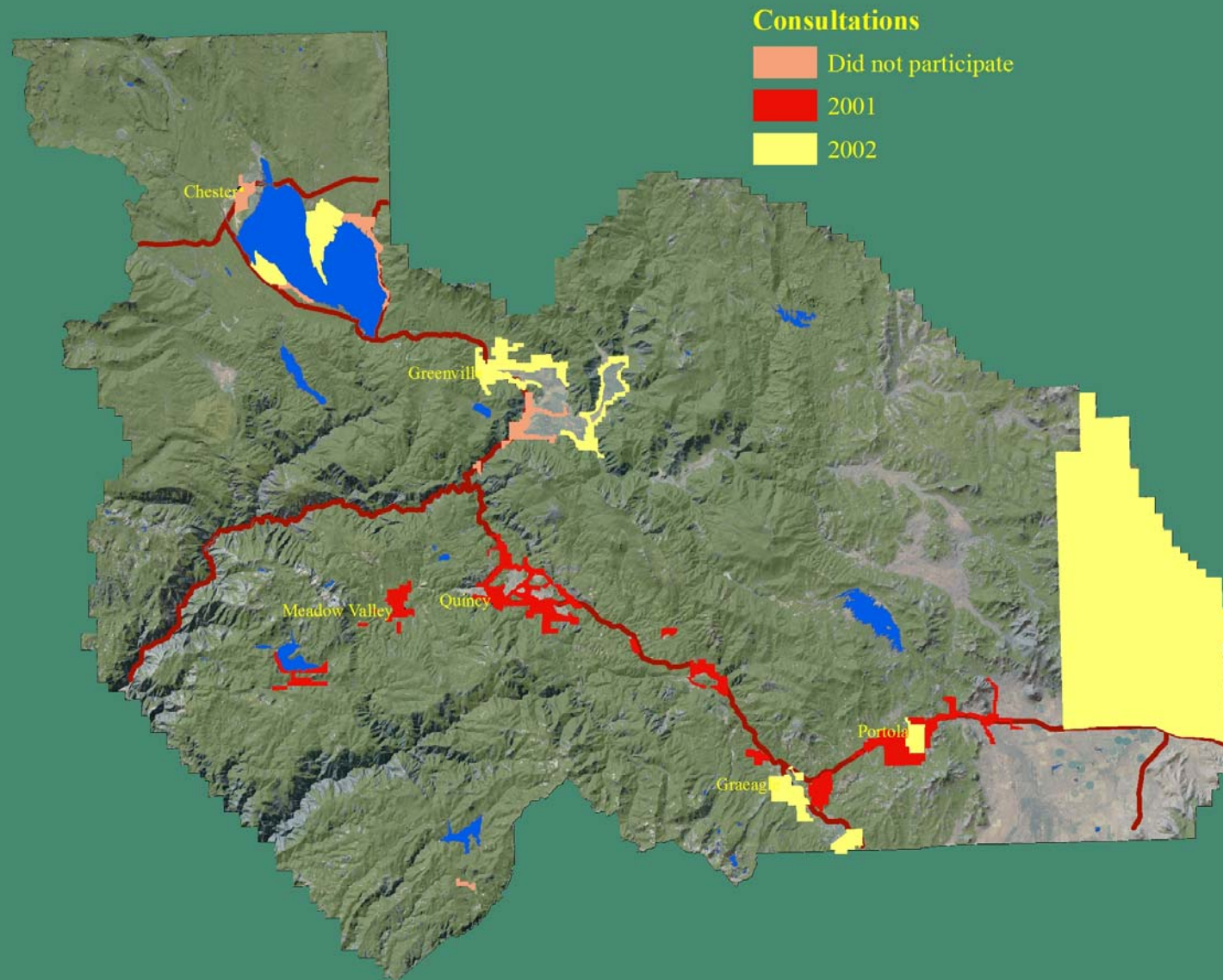
Education

◆ Firewise® Consultations

- Collaborated with 12 Volunteer Fire Departments
 - 6 in 2001 and another 6 in 2002
- Provided training to 45 Fire Department Volunteers “Consultants”
- Provided 435 Voluntary “Firewise®” Consultations
- Used modified NFPA Form 299

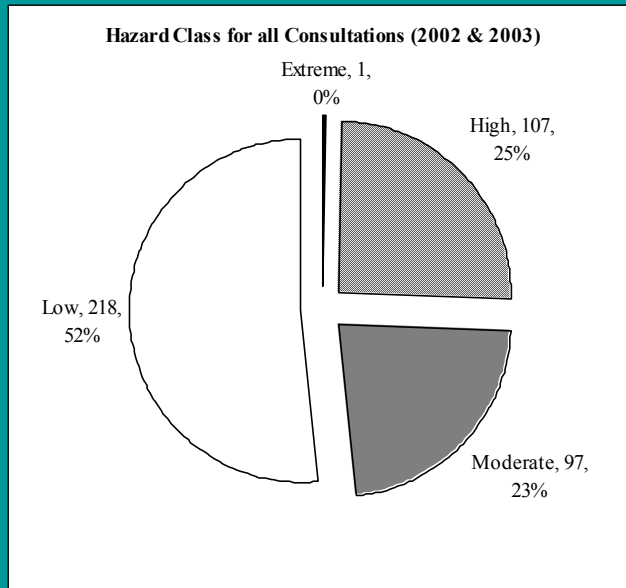


Fire District Participation



Consultation Results

Year	Number of Consultations	% of Outreach
2002	293	18
2003	130	9
Total	423	14



HAZARD CLASSES

Low Hazard = < 40 points

Moderate Hazard = 41 – 69 points

High Hazard = 70 - 112

Extreme Hazard = >112

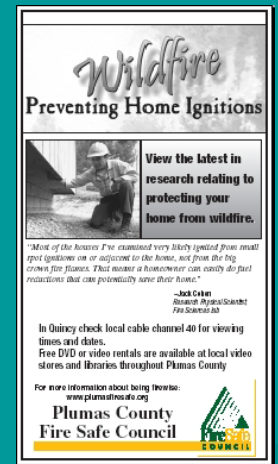
Education

- ◆ Firewise® Consultations
- ◆ Homeowner/Property owner meetings
 - Provided 3 “Firewise®” Educational meetings
 - Convened 15-20 community meetings



Education

- ◆ Firewise® Consultations
- ◆ Homeowner/Property owner meetings
- ◆ **Tabloids & Weekly Info Ads**
 - Collaborated with Feather Publishing



Education

- ◆ Firewise® Consultations
- ◆ Homeowner/Property owner meetings
- ◆ Tabloids & Weekly Info Ads
- ◆ Video Distribution
- ◆ Event Displays
 - Seasonal festivals
 - County Fair



Education

- ◆ Firewise® Consultations
- ◆ Homeowner/Property owner meetings
- ◆ Tabloids & Weekly Info Ads
- ◆ Event Displays
- ◆ Planning & Building

Education

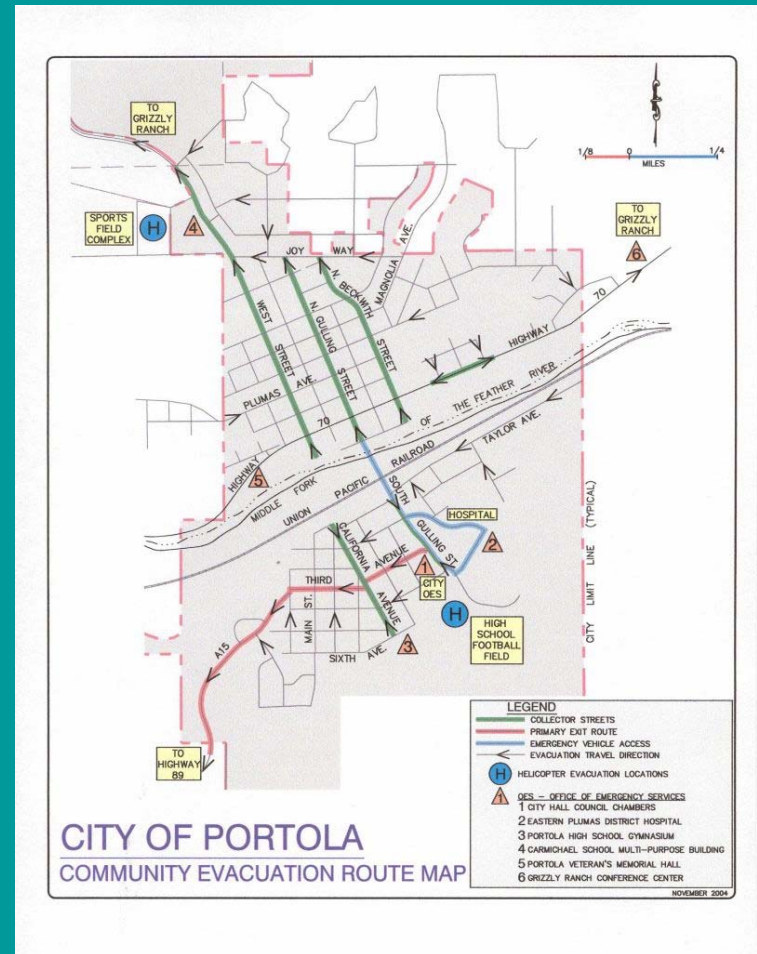
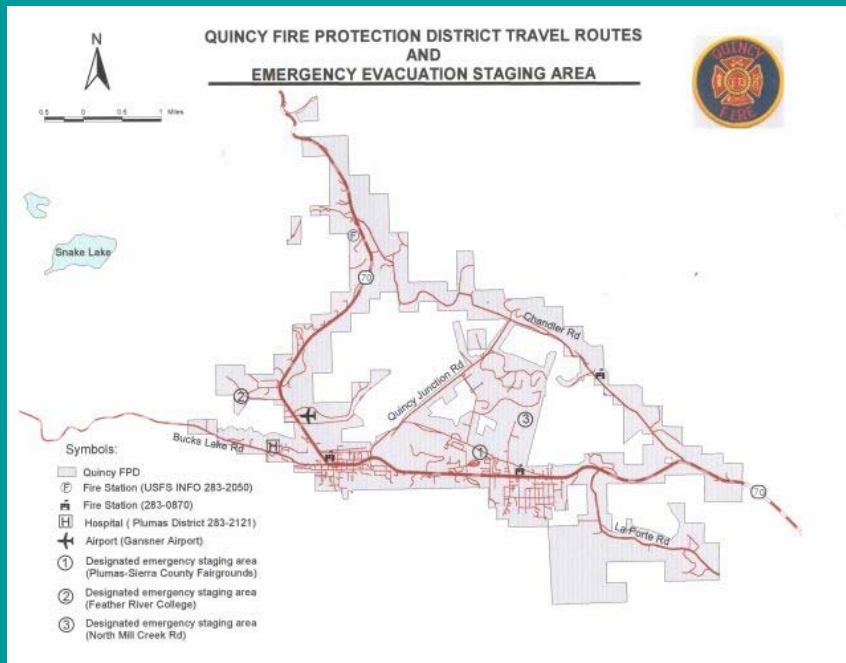
- ◆ Firewise® Consultations
- ◆ Homeowner/Property owner meetings
- ◆ Tabloids & Weekly Info Ads
- ◆ Event Displays
- ◆ Planning & Building
- ◆ Website (www.plumasfiresafe.org)



Planning

- ◆ Community Evacuation Plans
- ◆ Driveway mapping
- ◆ Assessment & Strategy
- ◆ County-wide fire plan

Community Evacuation Plans



Planning

- ◆ Community Evacuation Plans
- ◆ Driveway mapping

Driveway Mapping



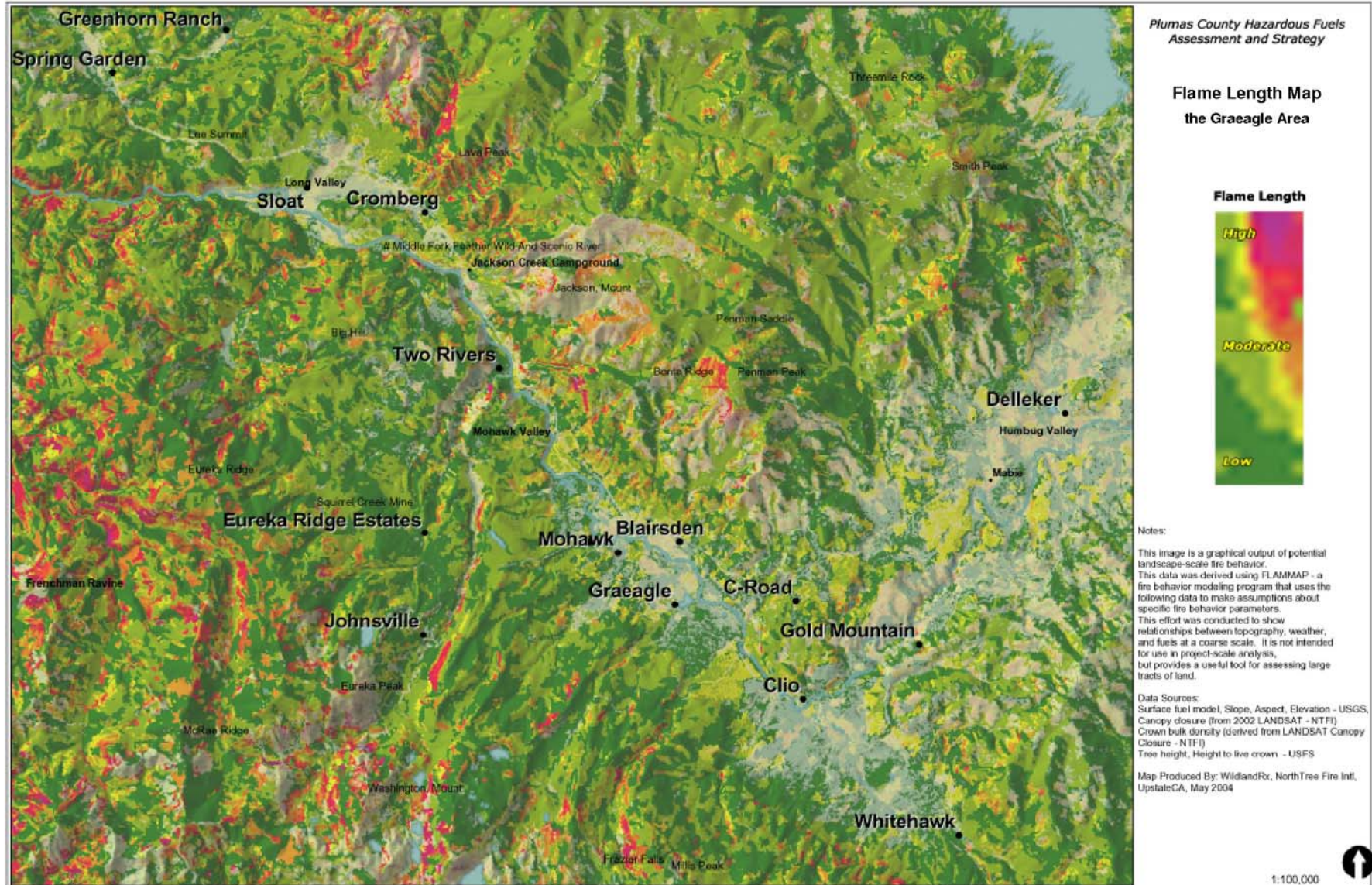
Planning

- ◆ Community Evacuation Plans
- ◆ Driveway mapping
- ◆ **Assessment & Strategy**
- ◆ County-wide fire plan

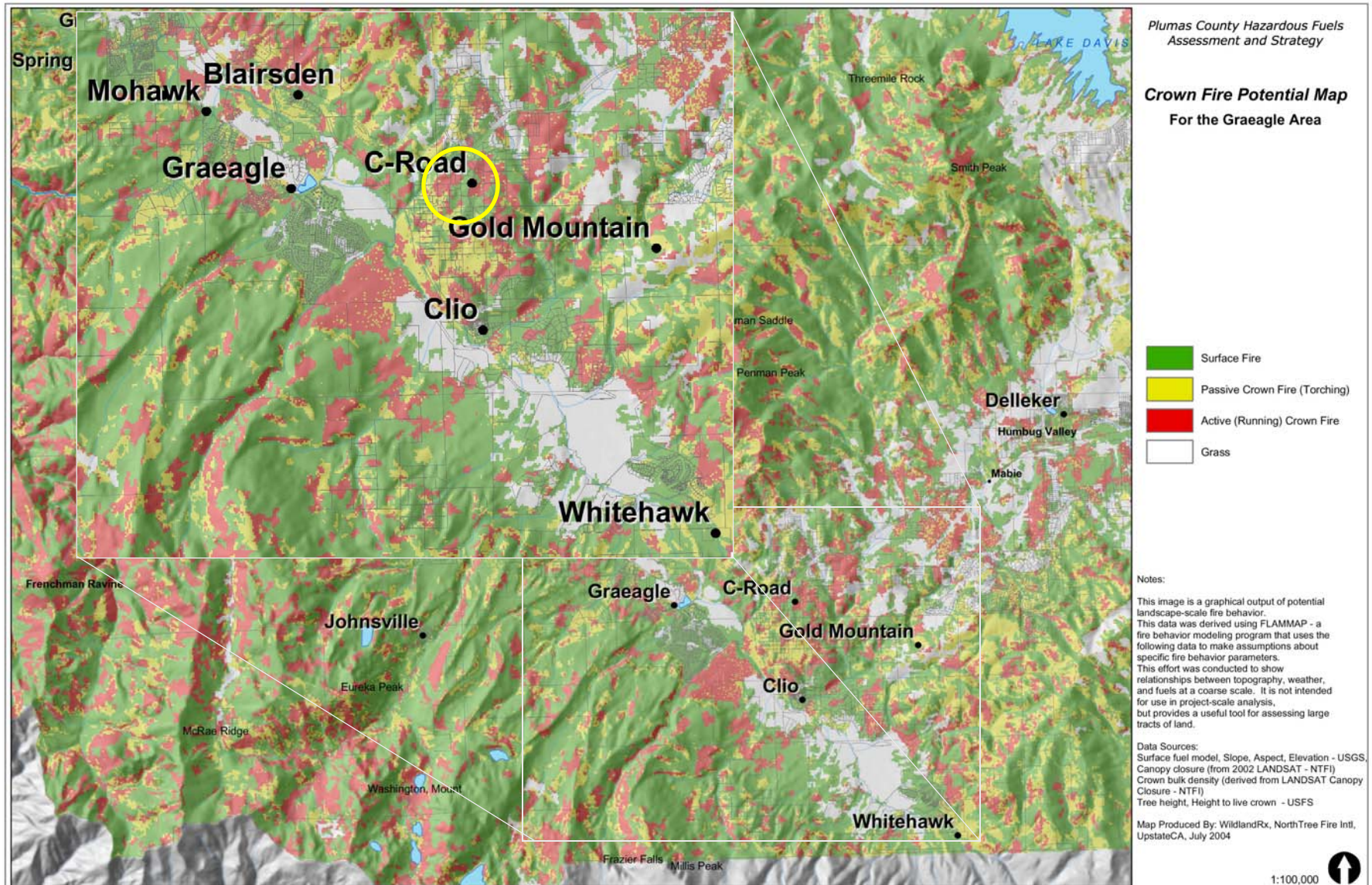
Assessment & Strategy



Flame Length



Crown Fire Potential



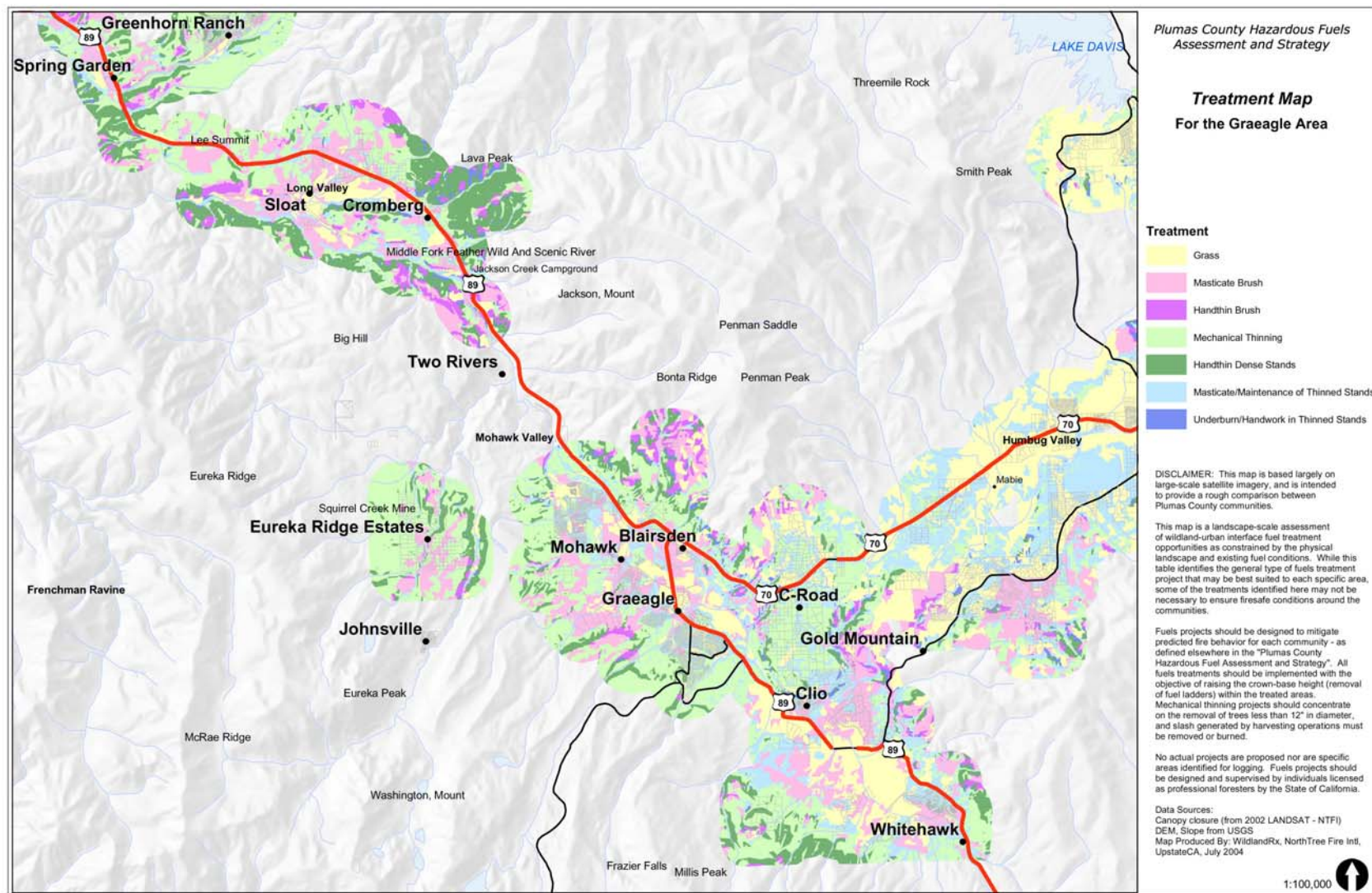
Community Narrative

- ◆ **Community:** C-Road
- ◆ **Dominant Historic Large Fire Behavior by Community:**
Uphill/up canyon runs for one burning period on southwest slopes, railroad ignitions as well as human starts.
- ◆ **Tactical Considerations:**
Poor clearance on many scattered individual structures, dangerous access, alignment of slope, fuels, wind, multiple ignition threats below. Very exposed to large-scale winds.
Approximately 430 private parcels falling on both sides of Highway 70. **This community has some serious problems which set the stage for a very devastating fire.**
- ◆ **Fuels Comments/Recommendations:**
High priority for reducing hazardous fuels which can include thinning of canopy and ladder fuels with follow up treatment of surface fuels. In addition to larger projects emphasize clearance of fuels around individual structures and thinning understory fuels in forested vacant lots.
- ◆ Fuelbreak-style thinning along main road would act to increase firefighter and evacuee safety.
- ◆ **Photopoints**
CR 1, CR2
- ◆ **Fire Behavior**
Extreme Fire Behavior with Active Crowning.

Project Priority Matrix

	LOW	MODERATE	HIGH
RISK			
Human Cause*	<i>Less than 1</i>	<i>1 to 3</i>	<i>> 3</i>
Lightning*	<i>Less than 1</i>	<i>1 to 3</i>	<i>> 3</i>
FIRE BEHAVIOR			
Surface Fire Rate of Spread	<i>< 400 feet/hour</i>	<i>400 to 1000 feet/hour</i>	<i>> 1000 feet/hour</i>
Flame Length	<i>< 2 feet</i>	<i>2 – 6 feet</i>	<i>> 6 feet</i>
Crown fire potential	<i>Surface fire under timber overstory</i>	<i>Passive</i>	<i>Active Crown fire or fire in Brush fuel model</i>
HAZARD			
Surface fuels loading	<i>< 10 Tons per acre</i>	<i>10-20 Tons per acre</i>	<i>> 20 tons per acre</i>
Crown Base Height	<i>> 50 feet</i>	<i>20-50 feet</i>	<i>< 20 feet</i>
TOPOGRAPHY			
Slope into or away from the community	<i>Slope away from community</i>	<i>Flat wind driven fires</i>	<i>Slope into the community</i>
VALUES AT RISK**			
	<i>1 to 3</i>	<i>3 to 20</i>	<i>> 20</i>
COLLABORATIVE PROJECTS			
	<i>None planned</i>	<i>Planned within 10 years</i>	<i>Construction started or complete</i>

Treatment Map



Planning

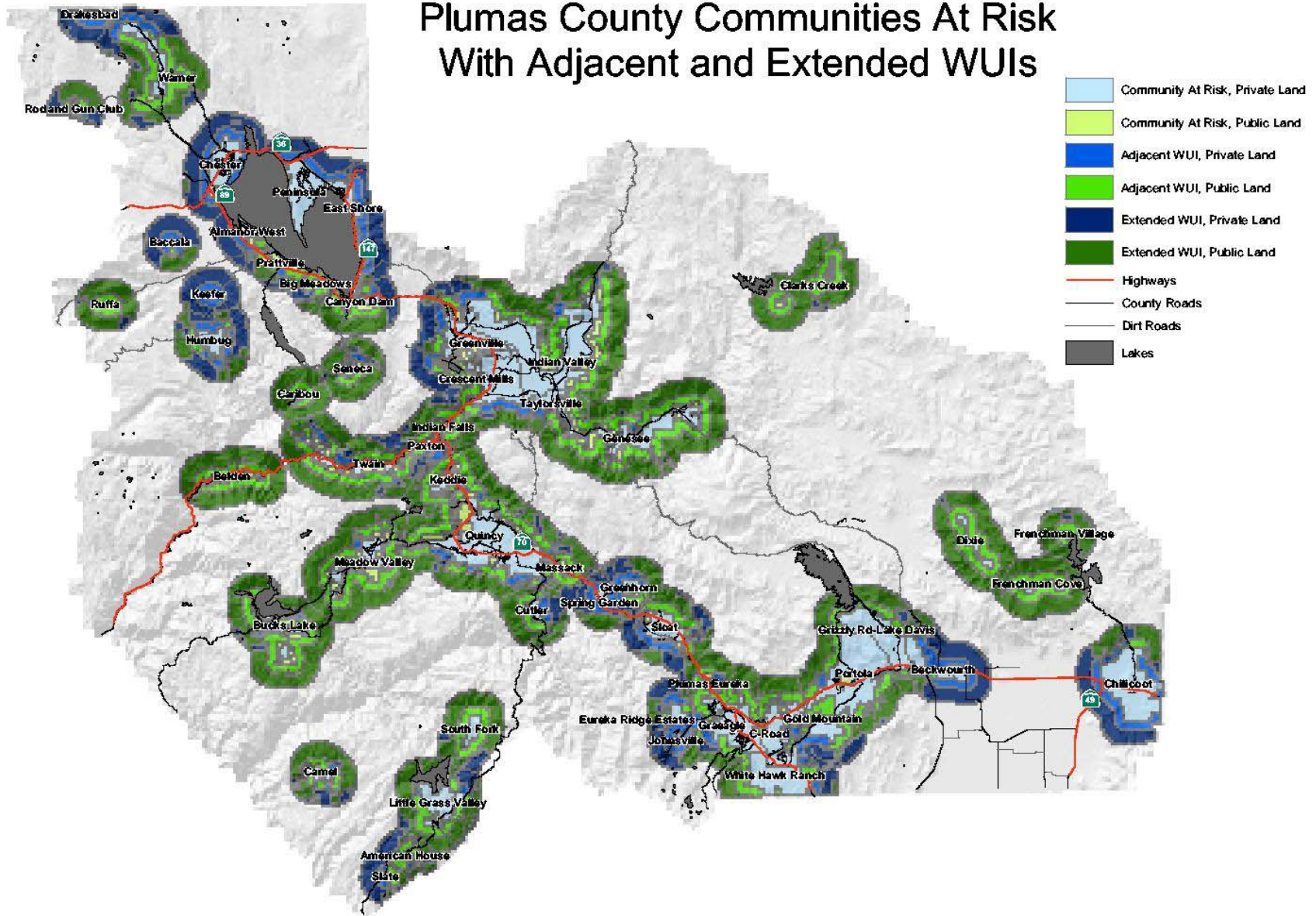
- ◆ Community Evacuation Plans
- ◆ Driveway mapping
- ◆ Assessment & Strategy
- ◆ County-wide fire plan

County-wide fire plan

8 Step Process

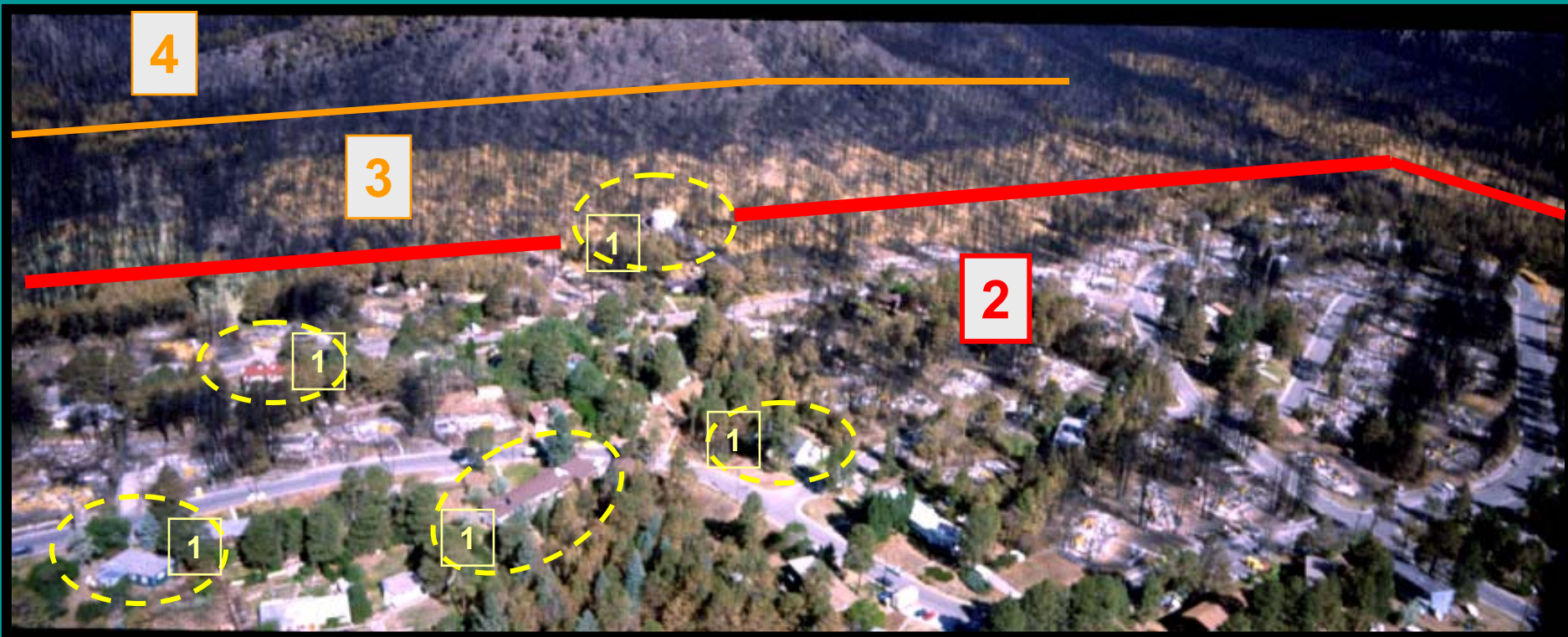
1. Convened Decision Makers
2. Involve Federal Agencies
3. Engage Interested Parties
4. Establish Base Map
5. Develop Risk Assessment & Assessment Strategy
6. Establish Priorities & Recommendations
7. Develop Action Plan
8. Finalize Community Wildfire Protection Plan

Plumas County Communities At Risk With Adjacent and Extended WUIs



Fire Risk Mitigation Strategies – PRIORITIES

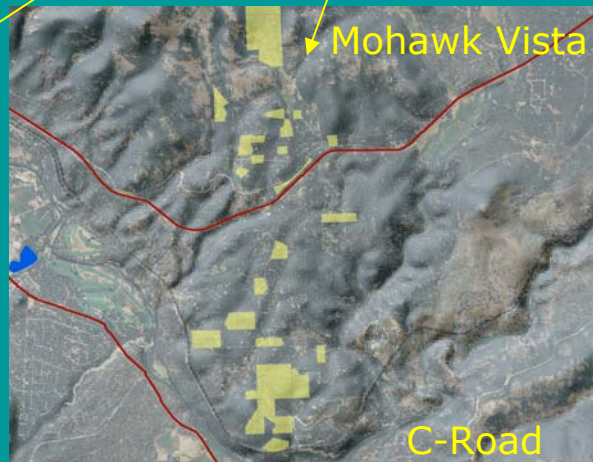
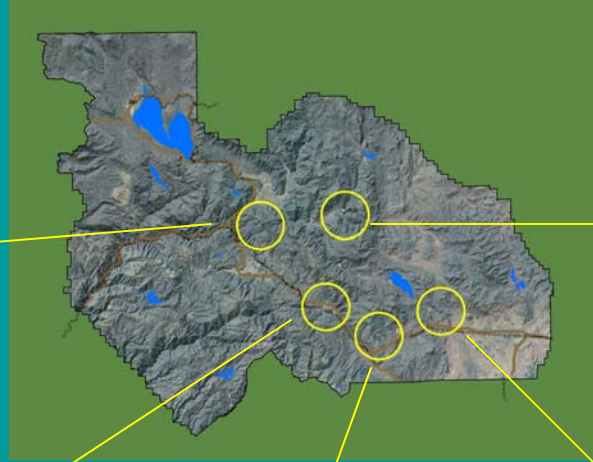
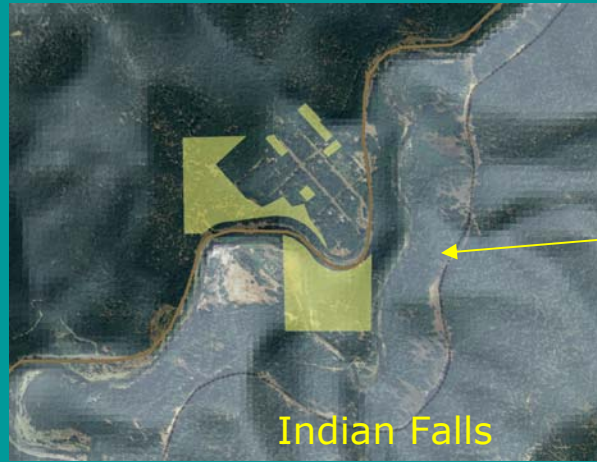
1. Home Ignition Zone - 0-150 ‘
2. Community at Risk Zone – (Communities at Risk)
3. Adjacent Wildland Urban Interface (WUI) Zone - .5 mile around Community
4. Extended Wildland Urban Interface (WUI) Zone - 1 Mile around adjacent WUI



Fuel Reduction

- Community focus (multiple properties)
- Community “activist” as leader

Community Fuel-Reduction Projects



Hazardous Fuel Reduction Treatment Methods

Mechanical Thinning

\$100-800 per acre

Mastication

\$500-800 per acre

Piling for burning

\$300-500 per acre

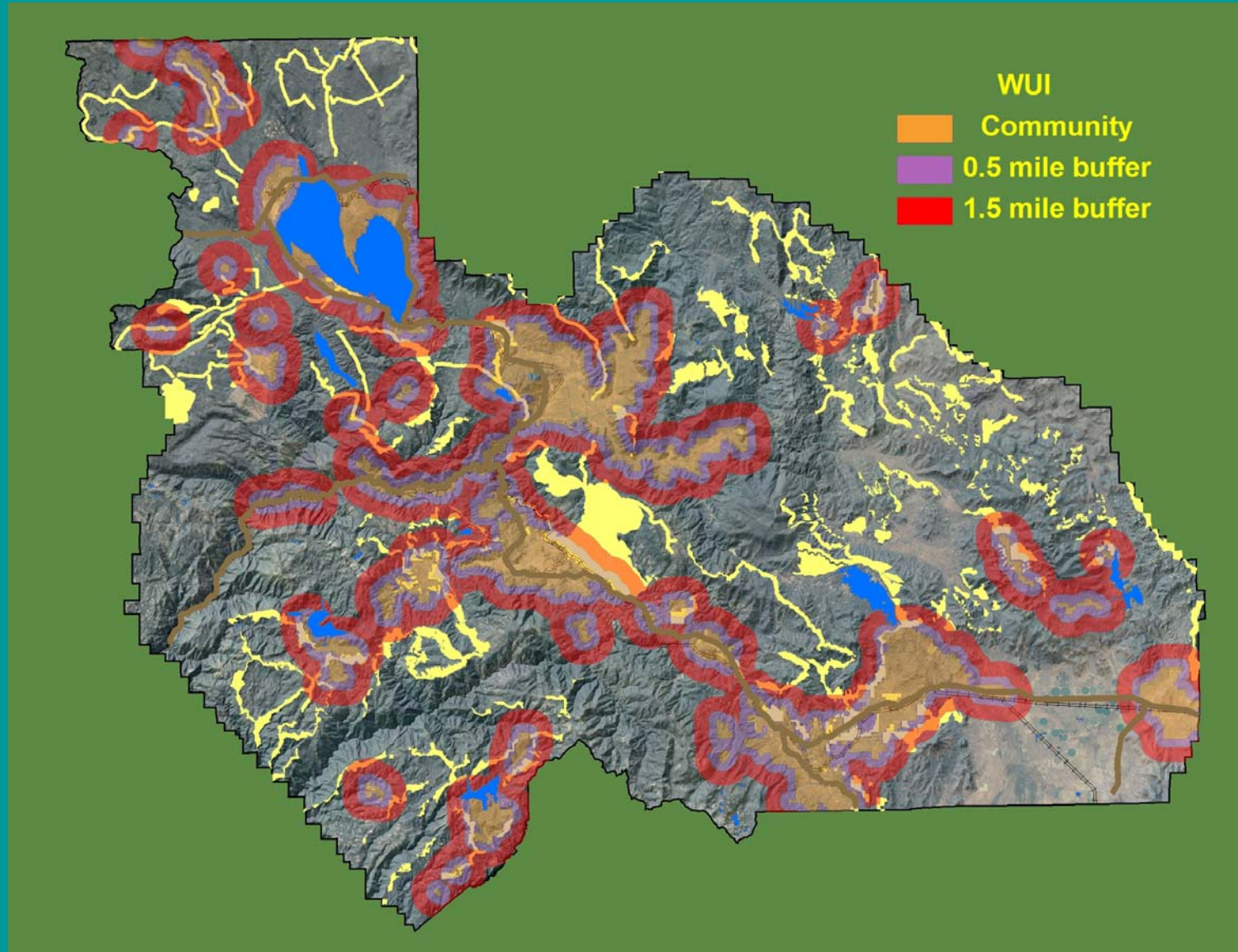
Hand Thinning & Piling or Chipping

\$800-1,500 per acre

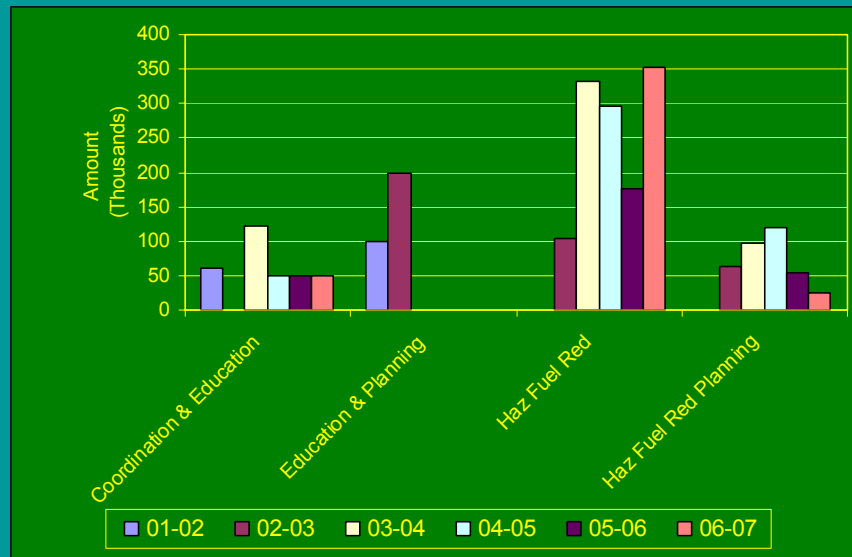
Prescribed Burning

\$100-300 per acre

National Forest Strategic Fuel Reduction

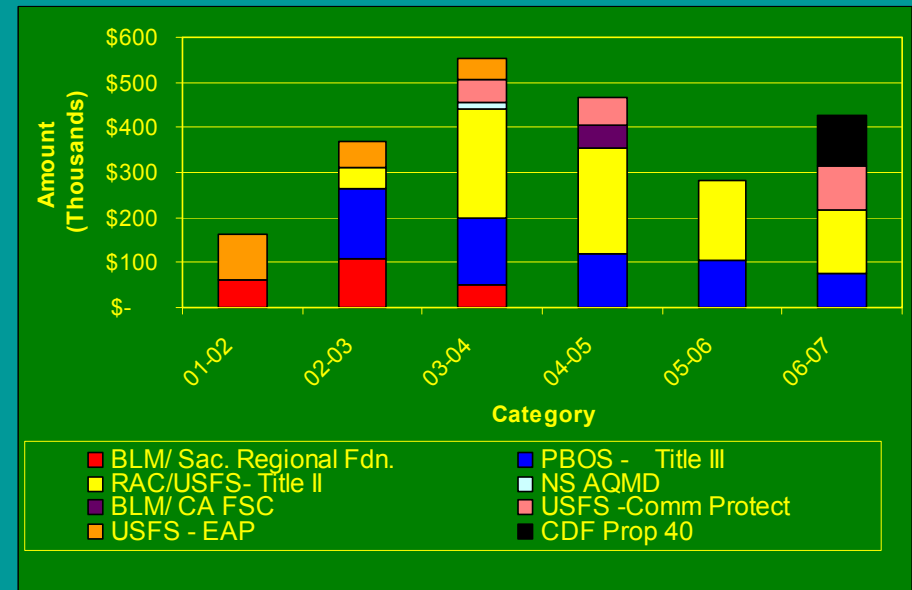


Funds



of Grants = 54

Total Amount = \$2.253m



Indicators of Success

- ✓ Continued support of Board of Supervisors
- ✓ Continued support of Volunteer Fire Department Chiefs
- ✓ Continued support of agencies
- ✓ Community participation
- ✓ 8 year record of accomplishment
- ✓ > 2,000 acres of fuel reduction funded

Questions??