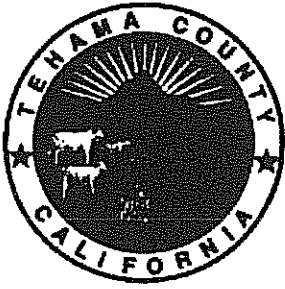


2007
Tehama County
Crop Report



COUNTY OF TEHAMA

Department of Agriculture/Weights and Measures

1760 Walnut Street · P.O. Box 38 · Red Bluff, California 96080

Phone: (530) 527-4504 Fax: (530) 529-1049

Rick J. Gurrola

Agricultural Commissioner/Sealer

E-mail: rgurrola@tehamaag.net

Douglas W. Compton

Asst. Agricultural Commissioner/Sealer

E-mail: dcompton@tehamaag.net

To: A.G. Kawamura
California Department of
Food and Agriculture

and

The Honorable Board of Supervisors
Tehama County

I am pleased to submit the 2007 Agricultural Crop Report. As required by Section 2279 of the California Food and Agricultural Code, this annual report provides a statistical description of Tehama County's agricultural production. All figures in the report represent gross returns only and do not reflect net income of producers.

The total gross value of Tehama County agricultural production in 2007 was \$190,737,000; an increase of \$28,377,580 from 2006 totals, and a new county record. The 17% increase was a combination of factors ranging from increased orchard acreage, prices for commodities and recovery from the previous year's disastrous olive crop. Walnuts alone increased \$15,370,500 or almost 40% due to a continued rise in bearing acres and a 59% increase in price, driven largely by a favorable foreign currency situation for exports. Olive yield recovered from 2006 and the shortage caused a continued strong price. Livestock inventory and prices both declined slightly, leading to a 16% decline in total value. Milk prices rose 50% and robust grain and forage values helped livestock products and field crop totals increase significantly. The grazing value of rangeland decreased by 55% due to drought that is continuing into the current year. Apiary colony numbers declined 14% due to colony collapse disorder and poor feed source from continued drought.

My sincere thanks goes out to the growers, processors, government agencies and others that provided information used in compiling this report; their cooperation is invaluable. Special recognition for the production of this report goes to Marcie Skelton, and all staff who assisted in compiling this report, as this publication would not be possible without their combined efforts.

Respectfully,

Rick J. Gurrola
Agricultural Commissioner
Sealer of Weights & Measures

Tehama County Department of Agriculture

2007 Crop Report

Tehama County Board of Supervisors

Gregg Avilla	Supervisor - District 1
George Russell	Supervisor - District 2
Charles Willard	Supervisor - District 3
Bob Williams	Supervisor - District 4, Chairperson
Ron Warner	Supervisor - District 5

Agriculture Department

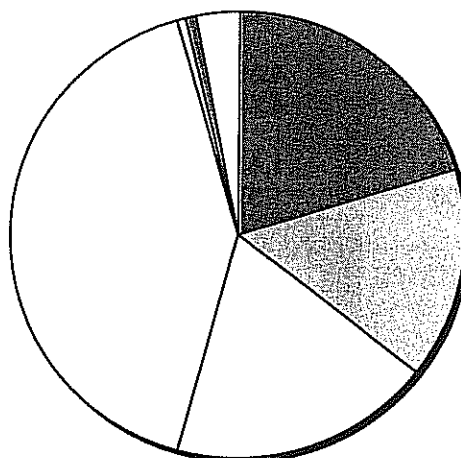
Rick J. Gurrola	Agricultural Commissioner & Sealer of Weights and Measures
Alexis Glines	Office Manager
Janet Miller	Office Manager - <i>Retired July 2007</i>
Amber Whitlock	Office Assistant
Douglas Compton	Assistant Agricultural Commissioner/Sealer
Doni Rulofson	Deputy Agricultural Commissioner/Sealer
David Stoffel	Agriculture Biologist/Weights & Measures Specialist
Ryan Jennings	Agriculture Biologist/Weights & Measures Specialist
Marcie Skelton	Agriculture Biologist/Weights & Measures Specialist
Mike Bowles	Agriculture Biologist/Weights & Measures Specialist
Loren Gehrung	Agriculture Biologist/Weights & Measures Specialist
Juan Rodriguez	Pest Control Worker
David Eder	Pest Control Worker

Fruit & Nut Crops

	Year	Bearing Acreage	Production/ Acre (tons)	Total Tons	Value/Ton	Total Value
Almond (meats)	2007	8,936	.86	7,685	\$3,420	\$26,282,700
	2006	7,800	.74	5,772	\$4,488	\$25,904,700
Olive	2007	5,200	4.8	24,960	\$804	\$20,067,800
	2006	5,500	.5	2,750	\$800	\$2,200,000
Prune	2007	8,633	1.9	16,403	\$1,486	\$24,374,900
	2006	8,645	2.4	20,748	\$1,380	\$28,632,200
Walnut	2007	16,702	1.4	23,383	\$2,301	\$53,804,300
	2006	15,624	1.7	26,561	\$1,447	\$38,433,800
Grape	2007	206	3	618	\$1,500	\$927,000
	2006	206	5.36	1,104	\$844	\$931,800
Pistachio	2007	181	1.6	290	\$3,150	\$913,500
	2006	181	6	1,118	\$4,300	\$507,400
Misc.*	2007					\$4,077,700
	2006					\$3,798,700
				Total	2007	\$130,447,900
					2006	\$100,408,600

*Includes: black walnuts, pecans, citrus, figs, almond hulls, cherries, blueberries (new for 2007), plums, pears, apricots, apples, peaches, and walnut shells.

Fruit & Nut Crop Value



☒ Almond
 ☐ Olive
 ☐ Prune
 ☐ Walnut
 ☐ Grape
 ☐ Pistachio
 ☐ Misc.

Nursery Products

	Year	Total Value
Nursery*	2007	\$2,584,800
	2006	\$2,263,600

*Includes Orchard trees, Raspberry, Strawberry, & Bedding Plants



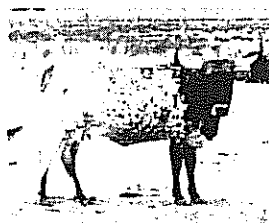
Livestock & Poultry

	Year	Number of Head Sold	Total Live-weight	Unit (hundred weight)	Value/Unit	Total
Calves	2007	4,488	19,792	cwt	\$107	\$2,117,700
	2006	5,100	27,999	cwt.	\$110	\$3,079,900
Feeders	2007	10,472	73,304	cwt.	\$104	\$7,623,600
	2006	11,900	83,300	cwt	\$104	\$8,663,200
Feedlot	2007	17,885	35,710	cwt.	\$95	\$3,392,500
	2006	20,324	40,648	cwt.	\$95	\$3,861,600
Cows & Bulls <small>(comb. for 1st time in 2006)</small>	2007	2,816	37,136	cwt.	\$55	\$2,042,400
	2006	3,600	46,956	cwt.	\$67	\$3,146,100
Dairy Cattle*	2007					\$2,348,400
	2006	1,650				\$2,298,300
Sheep & Lambs	2007	4,000	4,000	cwt.	\$90	\$360,000
	2006	4,200	4,200	cwt.	\$87	\$365,400
Hogs & Pigs	2007	900	1,575	cwt.	\$49	\$77,200
	2006	900	1,575	cwt.	\$47	\$74,000
Misc. Livestock**	2007					\$3,041,700
	2006					\$3,642,500

* Dairy Cattle includes, bull calves (new to 2007) and heifer replacements

**Misc. Livestock includes: aquaculture, meat & dairy goats, & various poultry & fowl

Total	2007	\$21,003,500
	2006	\$25,131,000



Vegetable Crops

	Year	Acres	Total Value
Misc. Vegetables*	2007	80	\$200,000
	2006	50	\$170,000

* Includes farmer's market & road side stands



Timber Products

	Year	Harvested Board Feet	Total Value
	2007	46,531,000	\$12,975,880
	2006	51,179,000	\$14,847,860

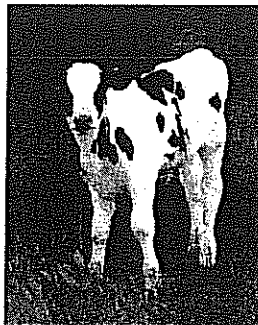


Livestock & Poultry Products

	Year	Total Production	Value/ Unit	Unit	Total Value
Milk (Market)	2007	433,502	cwt.	\$18.03	\$7,816,000
	2006	497,750	cwt.	\$11.73	\$5,838,600
Milk (Mfg.)	2007	418,821	cwt.	\$18.89	\$7,911,500
	2006	532,771	cwt.	\$12.53	\$6,675,600
Animal Fiber* (wool & fiber)	2007				\$30,000
	2006				\$30,000
Misc.**	2007				\$12,000
	2006				\$10,000

* Wool & Fiber (Alpaca, etc.)

**Includes poultry & other dairy products




Total	2007	\$15,769,500
	2006	\$12,554,200

Pasture & Range

	Year	Harvested Acres	Value/Acre	Total Value
Irrigated	2007	22,000	\$127	\$2,794,000
	2006	22,000	\$127	\$2,794,000
Range	2007	930,000	\$4	\$3,720,000
	2006	930,000	\$9	\$8,370,000
Stubble	2007	3,767	\$7	\$26,400
	2006	3,000	\$7	\$21,000
Total			2007	\$6,540,400
			2006	\$11,185,000

Apiary Products

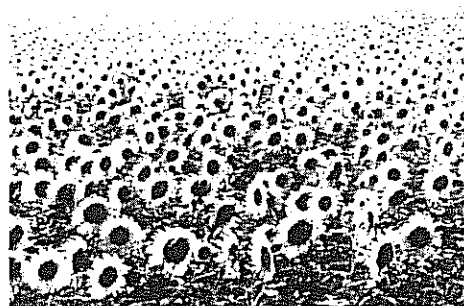
	Year	Production (colonies)	Value/Colony	Total Value
Pollination	2007	13,350	\$150	\$2,002,500
	2006	15,600	\$145	\$2,262,000
Apiary Products*	2007			\$2,566,000
	2006			\$1,573,300
Total			2007	\$4,568,500
			2006	\$3,835,300

*Includes Honey, Queens, Wax, & Package Bees

Seed Crops

	Year	Harvested Acreage	Total Value
Misc.*	2007	402	\$432,700
	2006	369	\$605,800

* Includes sunflowers, beans, melons, squash, watermelons, pumpkins, & cucumbers



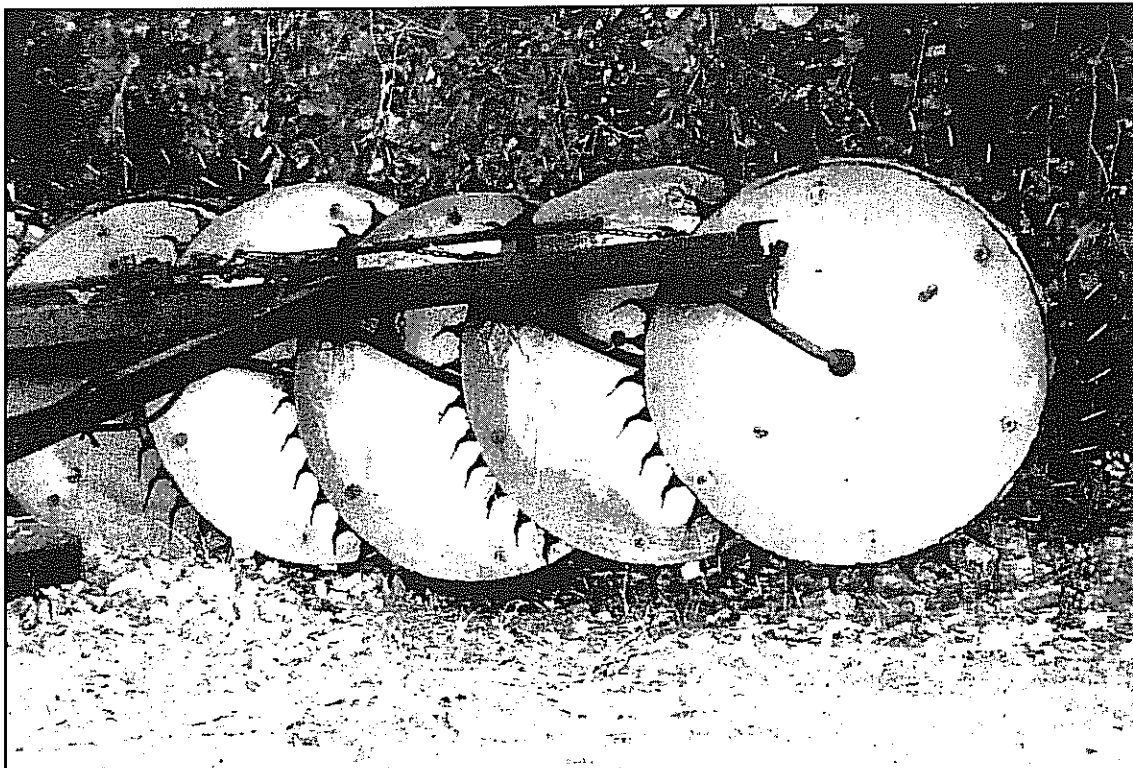
Field Crops

	Year	Harvested Acreage	Production/ Acre (tons)	Total Tons	Value/ Ton	Total Value
Wheat	2007	1,267	2.5	3,168	\$243	\$769,800
	2006	1,659	1.7	2,820	\$117	\$329,900
Corn	2007	1,764	5.4	9,526	\$147	\$1,400,300
	2006	1,250	4.8	6,000	\$112	\$672,000
Alfalfa, hay	2007	3,395	5.4	18,333	\$140	\$2,566,600
	2006	3,765	5.3	19,955	\$118	\$2,354,700
Grain, hay (Oats)	2007	4,274	2.4	10,258	\$120	\$1,231,000
	2006	4,516	2.1	9,484	\$82	\$777,700
Hay, other	2007	2,000	2.5	5,000	\$94	\$470,000
	2006	2,000	2.2	4,400	\$70	\$308,000
Silage, corn	2007	500	29.2	14,600	\$23	\$335,800
	2006	600	24	14,400	\$23	\$331,200
Misc.*	2007					\$2,416,200
	2006					\$1,432,500**

*Includes: Safflower, Barley, Milo, Cotton (new for 07)
Beans, Sudan Grass, and Rice

**Misc. 2006 total has been adjusted and subsequent
numbers have been adjusted respectively

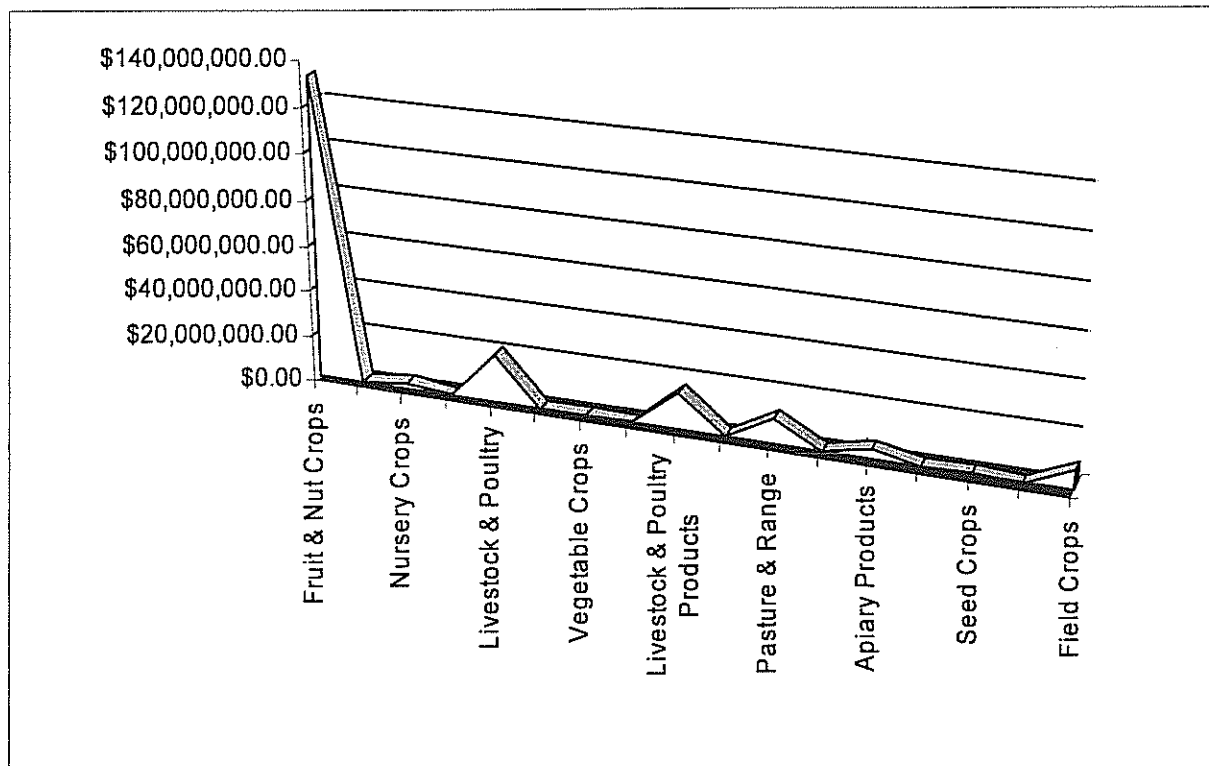
Total	2007	\$9,189,700
	2006	\$6,206,000



Comparison Summary

	2003	2004	2005	2006	2007
Fruit & Nut Crops	\$68,112,790	\$76,243,200	\$106,746,800	\$100,408,600	\$130,447,900
Nursery Crops	\$1,600,000	\$1,413,500	\$1,787,000	\$2,263,600	\$2,584,800
Livestock & Poultry	\$21,808,520	\$25,815,200	\$25,460,700	\$25,131,000	\$21,003,500
Vegetable Crops	\$160,000	\$170,000	\$170,000	\$170,000	\$200,000
Livestock & Poultry Prod.	\$13,797,500	\$14,384,400	\$16,706,400	\$12,554,200	\$15,769,500
Pasture & Range	\$10,225,000	\$11,199,000	\$11,199,000	\$11,185,000	\$6,540,400
Apiary Products	\$2,921,800	\$1,665,000	\$3,007,400	\$3,835,300	\$4,568,500
Seed Crops	\$542,770	\$546,900	\$620,000	\$605,800	\$432,700
Field Crops	\$5,970,320	\$6,921,200	\$6,768,800	\$6,206,000	\$9,189,700
Totals	\$125,138,700	\$138,358,400	\$172,466,100	\$162,359,500	\$190,737,000

2007 Totals



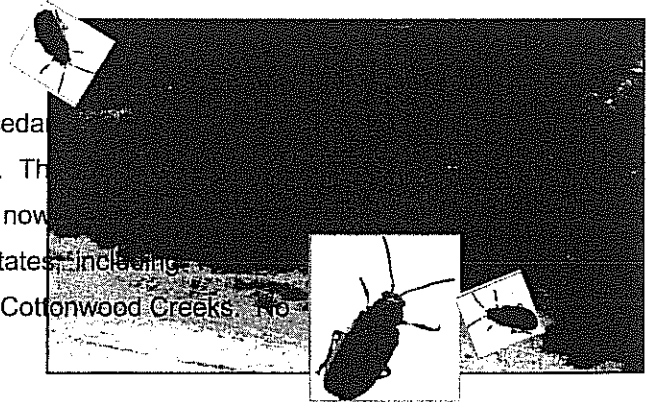
Annual Sustainable Agriculture Report

In accordance with Section 2272 of the California Food and Agriculture Code, this Crop Report includes a brief account of those efforts, which are being made to exclude or eradicate exotic pests; and to best manage those which already exist, in a manner most conducive to the protection of our environment. Three 'A' rated noxious weeds, of limited distribution were under eradication. The 'A' rated plants include Skeleton Weed, Dalmatian Toad-flax, and Spotted Knapweed. Tehama County continues to manage sites of 'B' and 'C' rated weeds in areas of limited distribution.

During 2007, 99 high-risk shipments were inspected for compliance with quarantine requirements, one of these shipments was treated and released. During the year, 1,110 various shipments were certified for export to 46 countries around the world.

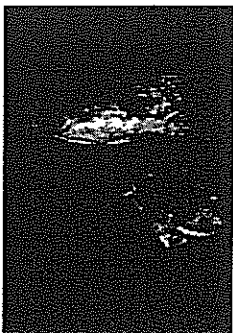
Pest detection trapping for Mediterranean Fruit Fly, Oriental Fruit Fly, Melon Fly, Japanese Beetle, and Gypsy Moth consisted of 358 traps being deployed, resulting in no finds. One hundred sixty six Glassy Winged Sharpshooter (GWSS) traps were placed in Tehama County, 253 nursery shipment were conducted as well as county wide surveying, resulting in no finds. The GWSS carries Pierce's Disease that is deadly to grape vines. The GWSS is known to feed on more that 100 plant species found in urban and rural landscapes and spreads other diseases such as Leaf Scorch to almonds and Alfalfa Dwarf in alfalfa. In addition, the GWSS can weaken plants making them susceptible to diseases not carried by the GWSS itself.

In 2007 a release of Saltcedar Beetle was made. The Saltcedar Beetle is a natural enemy of the Saltcedar plant, also known as Tamarisk. The Saltcedar was introduced in the early 1800's for erosion control and as an ornamental. It now covers several million prime riparian land in the Western United States, including Tehama County. Approximately 2000 were released on Red Bank and Cottonwood Creeks. No follow up work has been completed yet.



There were 22 registered organic growers in Tehama County in 2007, consisting of both local Farmer's Market producers and large-scale orchard and field crop growers.

A new risk to California farmers was discovered in 2007; the Light Brown Apple Moth (LBAM) was discovered in the Bay Area and has triggered a statewide response to eradicate the invader. LBAM is an insect that has a long host list and if it becomes established, could devastate California's agriculture as well as our beautiful and distinct landscape. LBAM has not been found in Tehama County, monitoring has been established with the deployment of 84 traps placed in nurseries, fields of commodities for export and other locations throughout the county.



A Glimpse into the Past 1957 to 2007

Commodity	1957 Totals (amount sold)	1957 Value	2007 Totals (amount sold)	2007 Value
Almonds	873 tons (1,597 ac)	\$421,000	7,685 tons (8,936 ac)	\$26,282,700
Olives	2,417 tons (3,501 ac)	\$746,000	26,400 tons (5,200 ac)	\$21,225,600
Prunes	3,793 tons (1,968 ac)	\$848,000	16,403 tons (8,633 ac)	\$24,374,900
Walnuts	821 tons (1,826 ac)	\$403,000	23,383 tons (16,702 ac)	\$53,804,300
Grapes	*		1,500 tons (206 ac)	\$927,000
Corn	10,315 tons (3,750 ac)	\$16,000	9,526 tons (1,764 ac)	\$1,400,300
Pistachio	*		290 tons (181 ac)	\$913,500
Watermelon	1,460 tons (107 ac)	\$26,500	*	
Alfalfa	48,000 tons (8,000 ac)	\$912,000	18,333 tons (3,395 ac)	\$2,566,600
Peas (seed)	498,000 lbs (415 ac)	\$17,500	*	
Other Hay	14,250 tons (5,700 ac)	\$256,000	15,258 tons (6,274 ac)	\$1,701,000
Straw	1,860 tons	\$16,000	*	
Sugar Beets	8,238 tons (398 ac)	121,000	*	
Grains	38,880 tons (34,900 ac)	\$1,477,000	5778 tons (3,247 ac)	\$1,343,800
Ladino Clover (seed)	230,850 lbs (902 ac)	\$69,300	*	
Sudan (seed)	120,000 lbs (200 ac)	\$6,000	*	
Nursery Stock		\$307,000		\$2,584,800
Honey	71 tons	\$14,500	150 tons	\$390,000
Bees Wax	1,220 lbs	\$670	200 lbs	\$1,000
Package Bees	12,000 pkgs.	\$45,500	75,000	\$1,125,000
Queen Bees	12,300 queens	\$12,800	75,000 queens	\$1,050,000
Dairy Cattle	7,150 head	\$562,000	3,800 head***	\$2,348,400
Beef Cattle	29,500 head	\$2,410,000	22,000 head***	\$15,176,200
Dairy Products	1,700,000 lbs BF	\$1,754,000	85,232,300 lbs BF	\$12,514,200
Goats	*		2,750	\$275,000
Sheep & Lambs	70,000 head	\$1,313,000	4,000 head	\$360,000
Hogs	11,100 head	\$232,000	900 head	\$77,200
Chicken Eggs	974,500 dozen	\$373,500	*	
Turkeys	71,600 birds	\$305,000	*	
Turkey Hatching Eggs	65,000 eggs	\$25,500	*	
Year Totals		\$14,725,770**		\$190,737,000**

*No corresponding values between 1957 and 2007.

**Will not add up to above column.

*** Totals in county—not head sold

\$176,011,230
Increase in 50 years!
Wonder what it will be in
the year 2058?

Tehama County Exports to 46 Countries:

**Almonds, Walnuts, Walnut Shells, Walnut Logs, Olives,
Strawberry Plants, Prunes, & Figs to the Below Countries.**

Algeria	Argentina	Armenia
Australia	Brazil	Bulgaria
Canada	Canary Islands	Chile
China	Colombia	Costa Rica
Cyprus	Dominican Republic	Ecuador
Egypt	Estonia	France
Germany	Greece	Guatemala
Hong Kong	India	Israel
Italy	Japan	Jordan
Korea	Lebanon	Malaysia
Mexico	Netherlands	Norway
Poland	Russia	Singapore
South Africa	Spain	Sweden
Switzerland	Taiwan	Turkey
United Arab Emirates	United Kingdom	Venezuela
Vietnam		

Tehama County

=

**Food for the
World**



How Agriculture has Shaped Tehama County

Imagining Tehama County without agriculture is nearly impossible. A Sunday drive down a country road provides peaceful views of cattle grazing on rolling foothills and perfectly lined orchards hugging the Sacramento River. The trees blossom with spring color displaying their bounty for harvest in the fall, reminding us of the changing seasons. These sights become so common to those living here; we start to take it for granted. What if the grass was paved over and the orchards were never planted? Take away the ranch hands and the farm laborers, the bee boxes and walnut processors, how would the absence of agriculture impact Tehama County?

Agriculture is the number one industry in Tehama County meaning our entire economy would be dramatically impacted. Tehama County residents rely heavily on agricultural inputs, directly or indirectly, for job sources and local food supply. In addition, agri-tourism stimulates the town through events like the Bull and Gelding Sale and Red Bluff Round-Up. The local way of life would be drastically different without the profound influence of agriculture.

Even before Tehama County was established in 1856, people gravitated to this area's deep soils, mild winters, and long warm summers, perfect for growing crops. A multitude of commodities have been tried over the years: with wheat possibly being the first commercially grown crop. In 1854, the first flour mill was established in Sesma, which is near the present day Los Molinos (History and Geography, Tehama County, written for Red Bluff School District, 1923). Over the next 70 years the region expanded to grow a multitude of commodities, including many that no longer dominate the agricultural scene in Tehama County, such as oranges, peaches, lemons, watermelons, sheep and even peanuts. For example, in 1922 there were 48,000 acres of wheat compared to today's 1,267 acres. Today the agricultural landscape is dominated by walnuts and almonds. Even though commodities have changed over the years, the importance of agriculture has never waned, and its value has been passed onto the future generations of farmers.

This dedication to agriculture in Tehama County not only feeds people locally, but also globally. Local growers annually export thousands of tons of walnuts, almonds, prunes and other commodities to 46 countries around the world. The food grown here impacts countless number of people who are able to enjoy the regional bounty. This bounty is produced by the thousands of Tehama County residents who are employed in the agricultural industry. Farmers, ranchers, and loggers, prepare the products, but there are many more behind the scenes that maintain equipment, pick and process the fruit, or turn logs in to useful wood products. Without the dedication of the farm, mill, and plant-workers the bounty would not be turned into a useful, and most times, edible product.

Since its inception, Tehama County has been devoted to helping agriculture flourish and has been successful in creating an area of prosperity, due to the strong roots of its agriculture. Even those who are not directly affected by agriculture, citizen support of agriculture is key to its sustainability and longevity. Take time today to thank a local farmer, rancher, or timber harvester for their hard work and dedication which impacts our local economy in such a powerful way. These hard working people are the spokes inside the agricultural wheel of Tehama County.