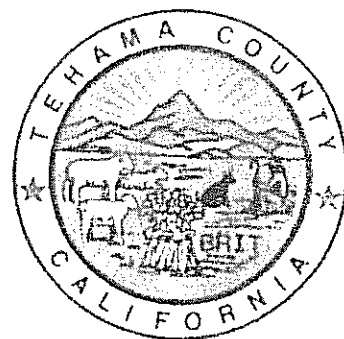


Tehama County

2008 Agricultural Crop Report





*Cover photos by Peggy Zane,
Zane Ranch, Paynes Creek, California*

Submit Tehama County farm/ranch
photos to
mshelton@tehamaag.net
for possible use in future
crop reports.

Tehama County

Department of Agriculture/Weights & Measures

To: A.G. Kawamura
California Department of
Food and Agriculture

and

The Honorable Board of Supervisors
Tehama County

I am pleased to submit the 2008 Agricultural Crop Report. As required by Section 2279 of the California Food and Agricultural Code, this annual report provides a statistical description of Tehama County's agricultural production. All figures in the report represent gross returns only and do not reflect net income of producers.

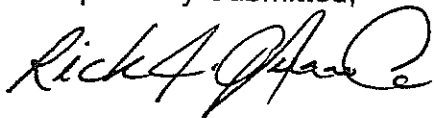
The total gross value of Tehama County agricultural production in 2008 was \$159,119,200, a 16.6% decrease from 2007 record values. The decline is attributed to significant decreases in prices for several commodities.

Orchard crops lead the overall decrease in value of \$34,640,000 from 2007. Although walnut yields increased, a 52.0% price decrease resulted in a value decrease of \$18,641,900. A freeze in April and unseasonable heat and winds in May attributed to the 47.4% decrease in olive values. Wine grapes decreased 61.8% due to yield decreases resulting from the April freeze. Almond values dropped 24.4% due to price decreases. Prunes posted a modest increase of 2.4%

Field crops increased 49.4% in value, with alfalfa hay contributing a 76.2% gain. Apiary products increased 74% in value. Livestock declined 20.0% due to decreases in inventory and prices. Rangeland values continue to decrease as a result of ongoing droughts and dropped another 25.4%.

My sincere thanks goes out to the growers, processors, government agencies, and others that provided information used in compiling this report, their cooperation is invaluable. I wish to thank all staff that assisted in compiling this report with special recognition to Marcie Skelton for the report's production, as this publication would not be possible without their combined efforts.

Respectfully Submitted,



Rick J. Gurrola
Agricultural Commissioner

Tehama County Department of Agriculture

2008 Crop Report

Tehama County Board of Supervisors

Gregg Avilla	Supervisor - District 1
George Russell	Supervisor - District 2, Chairman
Charles Willard	Supervisor - District 3
Bob Williams	Supervisor - District 4
Ron Warner	Supervisor - District 5

Agriculture Department

Rick Gurrola	Agricultural Commissioner & Sealer of Weights and Measures
Douglas Compton	Assistant Agricultural Commissioner/Sealer
Doni Rulofson	Deputy Agricultural Commissioner/Sealer
David Stoffel	Agricultural Biologist/Weights & Measures Specialist
Ryan Jennings	Agricultural Biologist/Weights & Measures Specialist
Marcie Skelton	Agricultural Biologist/Weights & Measures Specialist
Mike Bowles	Agricultural Biologist/Weights & Measures Specialist
Loren Gehrung	Agricultural Biologist/Weights & Measures Specialist
Juan Rodriguez	Agricultural Weights & Measures Aide
David Eder	Agricultural Weights & Measures Aide
Alexis Glines	Office Manager
Ashley Gutierrez	Office Assistant

Fruit & Nut Crops

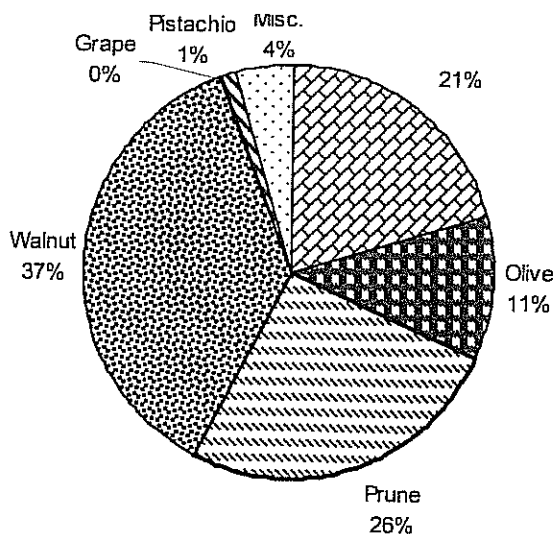


	Year	Bearing Acreage	Production/ Acre (tons)	Total Tons	Value/ Ton	Total Value
Almond (meats)	2008	8,786	.81	7,117	\$2,792	\$19,869,700
	2007	8,936	.86	7,685	\$3,420	\$26,282,700
Olive	2008	5,262	2.2	11,576	\$911	\$10,546,100
	2007	5,200	4.8	24,960	\$804	\$20,067,800
Prune	2008	8,527	2	17,054	\$1464	\$24,967,100
	2007	8,633	1.9	16,403	\$1,486	\$24,374,900
Walnut	2008	16,748	1.9	31,821	\$1,105	\$35,162,400
	2007	16,702	1.4	23,383	\$2,301	\$53,804,300
Grape	2008	219	1.5	329	\$1,078	\$354,100
	2007	206	3	618	\$1,500	\$927,000
Pistachio	2008	181	1.4	253	\$4,100	\$1,038,900
	2007	181	1.6	290	\$3,150	\$913,500
Misc.*	2008					\$3,869,600
	2007					\$4,077,700

*Includes: black walnuts, pecans, citrus, figs, almond hulls, cherries, blueberries, plums, pears, apricots, apples, peaches, and walnut shells.

Total 2008 \$95,807,900
2007 \$130,447,900

Fruit & Nut Crop Value



Nursery Products

	Year	Total Value
Nursery*	2008	\$2,865,300
	2007	\$2,584,800

*Includes Orchard and Christmas trees, Strawberry, Bedding Plants & Trees



Livestock & Poultry

	Year	Number of Head Sold	Total Live-Weight	Unit	Value/ Unit	Total Value
Calves	2008	4,080	17,993	cwt.	\$105	\$1,889,300
	2007	4,488	19,792	cwt.	\$107	\$2,117,700
Feeders	2008	9,520	66,640	cwt.	\$94	\$6,264,200
	2007	10,472	73,304	cwt.	\$104	\$7,623,600
Feedlot	2008	16,327	32,654	cwt.	\$90	\$2,938,900
	2007	17,885	35,710	cwt.	\$95	\$3,392,500
Cows & Bulls <small>(comb. for 1st time in 2006)</small>	2008	2,560	33,760	cwt.	\$44	\$1,485,400
	2007	2,816	37,136	cwt.	\$55	\$2,042,400
Dairy Cattle*	2008					\$2,024,100
	2007					\$2,348,400
Sheep & Lambs	2008	4,000	4,000	cwt.	\$90	\$360,000
	2007	4,000	4,000	cwt.	\$90	\$360,000
Hogs & Pigs	2008	950	1,663	cwt.	\$48	\$79,800
	2007	900	1,575	cwt.	\$49	\$77,200
Misc. Livestock**	2008					\$1,769,300
	2007					\$3,041,700

*Dairy Cattle includes, bull calves (new to 2007) and heifer replacements

**Misc. Livestock includes: aquaculture, meat & dairy goats, & various poultry & fowl



Total	2008	\$16,811,000
	2007	\$21,003,500

Vegetable Crops

	Year	Acres	Total Value
Misc. Vegetables*	2008	100	\$250,000
	2007	80	\$200,000

* Includes farmer's market & road side stands

Timber Products



Year	Harvested Board Feet	Total Value
2008	63,877,000	\$9,853,800
2007	46,531,000	\$12,975,880

Livestock & Poultry Products

	Year	Production	Unit	Value/Unit	Total Value
Milk (Market)	2008	507,935	cwt.	\$17.04	\$8,655,200
	2007	433,502	cwt.	\$18.03	\$7,816,000
Milk (Mfg.)	2008	377,601	cwt.	\$18.54	\$7,000,700
	2007	418,821	cwt.	\$18.89	\$7,911,500
Animal Fiber* (wool & fiber)	2008				\$30,000
	2007				\$30,000
Misc.**	2008				\$72,000
	2007				\$42,000***
Total					
					2008 \$15,757,900
					2007 \$15,769,500

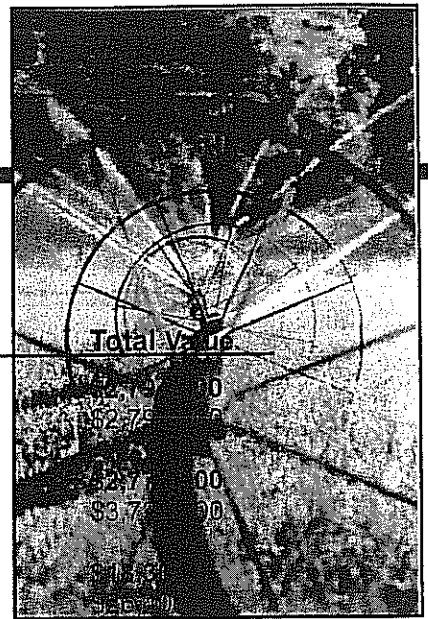
* Wool & Fiber (Alpaca, etc.)

**Includes poultry & other dairy products

*** Adjusted total

Pasture & Range

	Year	Harvested Acres	Value/Acre	Total Value
Irrigated	2008	22,000	\$127	\$2,794,000
	2007	22,000	\$127	\$2,794,000
Range	2008	925,000	\$3	\$2,775,000
	2007	930,000	\$4	\$3,720,000
Stubble	2008	2,614	\$7	\$18,298
	2007	3,767	\$7	\$26,369
Total			2008	\$5,587,300
			2007	\$6,540,400



Apiary Products

	Year	Production (colonies)	Value/Colony	Total Value
Pollination	2008	20,522	\$139	\$2,852,600
	2007	13,350	\$150	\$2,002,500
Apiary Products*	2008			\$5,098,800
	2007			\$2,566,000
Total			2008	\$7,951,400
			2007	\$4,568,500

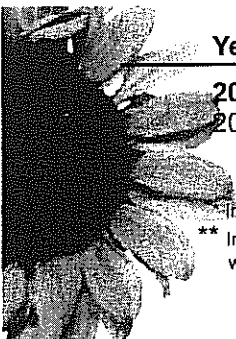
*Includes Honey, Queens, Wax, & Package Bees

Seed Crops

Year	Harvested Acreage	Total Value
2008*	482	\$354,500
2007**	402	\$432,700

*Includes sunflowers, beans & corn

** Includes sunflowers, beans, melons, squash, watermelons, pumpkins, & cucumbers

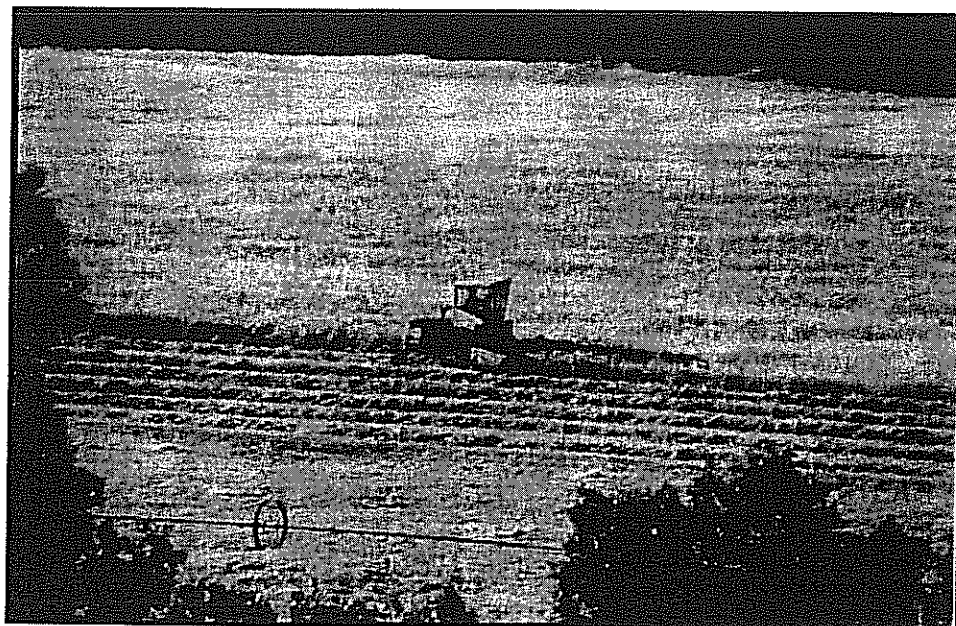


Field Crops

	Year	Harvested Acreage	Production/ Acre (tons)	Total Tons	Value/ Ton	Total Value
Wheat	2008	1,014	2.3	2,332	\$213	\$496,800
	2007	1,267	2.5	3,168	\$243	\$769,800
Corn	2008	1,610	6.8	10,948	\$173	\$1,894,000
	2007	1,764	5.4	9,526	\$147	\$1,400,300
Alfalfa, hay	2008	3,798	6.4	24,307	\$186	\$4,521,100
	2007	3,395	5.4	18,333	\$140	\$2,566,600
Grain, hay (Oats)	2008	4,551	2.3	10,467	\$150	\$1,570,100
	2007	4,274	2.4	10,258	\$120	\$1,231,000
Hay, other	2008	2,000	2.4	4,800	\$143	\$686,400
	2007	2,000	2.5	5,000	\$94	\$470,000
Silage, corn	2008	500	27.8	13,900	\$48	\$667,200
	2007	500	29.2	14,600	\$23	\$335,800
Misc.*	2008					\$3,898,300
	2007					\$2,416,200

*Includes: Safflower, Barley, Milo, Cotton (only for 2007)
Beans, Sudan Grass, and Rice

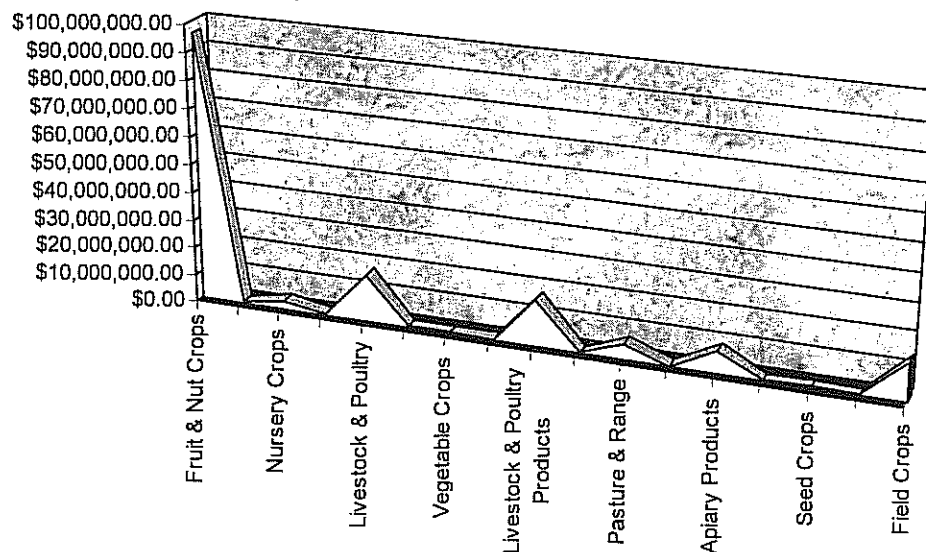
Total **2008** **\$13,733,900**
 2007 **\$9,189,700**



Comparison Summary

	2004	2005	2006	2007	2008
Fruit & Nut Crops	\$76,243,200	\$106,746,800	\$100,408,600	\$130,447,900	\$95,807,900
Nursery Crops	\$1,413,500	\$1,787,000	\$2,263,600	\$2,584,800	\$2,865,300
Livestock & Poultry	\$25,815,200	\$25,460,700	\$25,131,000	\$21,003,500	\$16,811,000
Vegetable Crops	\$170,000	\$170,000	\$170,000	\$200,000	\$250,000
Livestock & Poultry Prod.	\$14,384,400	\$16,706,400	\$12,554,200	\$15,769,500	\$15,757,900
Pasture & Range	\$11,199,000	\$11,199,000	\$11,185,000	\$6,540,400	\$5,587,300
Apiary Products	\$1,665,000	\$3,007,400	\$3,835,300	\$4,568,500	\$7,951,400
Seed Crops	\$546,900	\$620,000	\$605,800	\$432,700	\$354,500
Field Crops	\$6,921,200	\$6,768,800	\$6,206,000	\$9,189,700	\$13,733,900
Totals	<u>\$138,358,400</u>	<u>\$172,466,100</u>	<u>\$162,359,500</u>	<u>\$190,737,000</u>	<u>\$159,119,200</u>

Comparison Graph



Annual Sustainable Agriculture Report

In accordance with Section 2272 of the California Food and Agriculture Code, this Crop Report includes a brief account of those efforts, which are being made to exclude or eradicate exotic pests; and to best manage those which already exist, in a manner most conducive to the protection of our environment. Three 'A' rated noxious weeds, of limited distribution were under eradication. The 'A' rated plants include Skeleton Weed, Dalmatian Toad-flax, and Spotted Knapweed. Tehama County continues to manage sites of 'B' and 'C' rated weeds in areas of limited distribution.

During 2008, 109 high-risk shipments were inspected for compliance with quarantine requirements, 2 of the shipments were rejected. During the year, 1,391 various shipments were certified for export to 49 countries around the world.

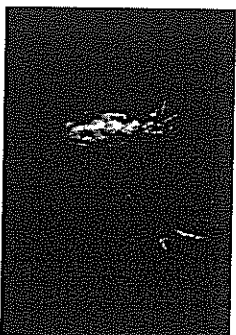
Pest detection trapping for Mediterranean Fruit Fly, Oriental Fruit Fly, Melon Fly, Japanese Beetle, and Gypsy Moth consisted of 358 traps being deployed, resulting in no finds. One hundred sixty two Glassy Winged Sharpshooter (GWSS) traps were placed in Tehama County, 206 nursery shipments were conducted, as well as county wide surveying, resulting in no finds. The GWSS carries Pierce's Disease that is deadly to grape vines. The GWSS is known to feed on more than 100 plant species found in urban and rural landscapes and spreads other diseases such as Leaf Scorch to almonds and Alfalfa Dwarf in alfalfa. In addition, the GWSS can weaken plants making them susceptible to diseases not carried by the GWSS itself.

There were 23 registered organic growers in Tehama County in 2008, consisting of both local Farmer's Market producers and large-scale livestock, dairy, orchard and field crop producers.

Tehama County continues to actively monitor for the Light Brown Apple Moth (LBAM). In 2008 there were 85 traps deployed throughout the county with emphasis on nurseries and fields destined for the global market. The LBAM is an invasive pest that attacks over 250 crops and 2,000 host and ornamental plants. Infestations and subsequent quarantine restrictions are in ten Bay Area and Central Coast counties. Protecting California's environment from invasive species is the goal and eradication is currently the strategy. LBAM has not been found in Tehama County.

Further information can be found at: http://www.cdfa.ca.gov/phpps/pdep/lbam/lbam_main.html

Pictures below are of the Light Brown Apple Moth.



A Glimpse into the Past

1958 to 2008

Commodity	1958 Totals (amount sold)	2008 Totals (amount sold)	1958 Value	2008 Value
Almonds	241 tons (1449 ac)	7,117 tons (8786 ac)	\$187,000	\$19,869,700
Olives	4,882 tons (3,358 ac)	11,576 tons (5262 ac)	\$605,000	\$10,546,100
Prunes	1,850 tons (1893 ac)	17,054 tons (8,527 ac)	\$717,300	\$24,967,100
Walnuts	1,286 tons (2,015 ac)	31,821 tons (16,748 ac)	\$515,500	\$35,162,400
Grapes		329 tons (219 ac)		\$354,100
Corn	5,400 tons (2,700 ac)	10,948 tons (1610 ac)	\$252,400	\$1,894,000
Pistachio	*	253 tons (181 ac)	*	\$1,037,300
Watermelon	920 tons (82 ac)	*	\$22,000	
Alfalfa	31,300 tons (5215 ac)	24,307 tons (3798 ac)	\$563,000	\$4,521,100
Truck Crops	*	*	\$16,500	\$250,000
Other Hay	5,600 tons (3,758 ac)	4,800 tons (2000 ac)	\$101,500	\$686,400
Sugar Beets	8,031 tons (493 ac)	*	\$90,500	*
Grains		10,467 tons (4551 ac)		\$1,570,100
Ladino Clover (seed)	385,000 lbs (1,040 ac)	*	\$192,500	*
Other Seed (Sudan, Peas, Alfalfa)	123,000 lbs (324 ac)	*	\$11,700	*
Nursery Stock	29,807,465 plants (120 ac)	482 acres	\$422,500	\$2,865,350
Honey	77 tons	412 tons	\$14,000	\$1,443,750
Bees Wax	4,650 lbs	1,000 lbs	\$1,900	\$5,000
Package Bees	11,660 packages	50,000	\$43,000	\$2,250,000
Queen Bees	5,200	100,000	\$6,700	\$1,400,000
Dairy Cattle			\$697,000	\$15,655,900
Beef Cattle			\$4,191,800	\$12,577,800
Dairy Products			\$1,592,800	\$15,757,900
Sheep & Lambs			\$1,408,000	\$360,000
Hogs			\$334,600	\$79,800
Chicken Eggs	117,600 birds	*	\$65,500	*
Turkeys	102,700 birds	*	\$422,500	*
Hatching Eggs (Turkey & Chicken)		*	\$67,100	*
Year Totals			\$15,289,936**	\$159,119,200**

*No corresponding values between 1958 and 2008.

**Will not add up to above column.

\$144,889,264
Increase in 50 years!
Wonder what it will be in
the year 2058?

Tehama County Exports

*Almonds, Walnuts, Walnut Shells, Walnut Logs, Olives,
Strawberry Plants, Prunes, and Figs*

Algeria	Argentina	Armenia
Australia	Brazil	Bulgaria
Canada	Canary Islands	Chile
China	Colombia	Costa Rica
Cyprus	Dominican Republic	Ecuador
Egypt	Estonia	France
Germany	Greece	Guatemala
Hong Kong	India	Indonesia
Israel	Italy	Japan
Jordan	Korea	Lebanon
Malaysia	Mexico	Morocco
Netherlands	Norway	Poland
Russia	Singapore	South Africa
Spain	Sweden	Switzerland
Taiwan	Turkey	Ukraine
United Arab Emirates	United Kingdom	Venezuela
Vietnam		



=

