



## *2007 CROP REPORT*



*TUOLUMNE COUNTY  
AGRICULTURAL COMMISSIONER*



# County of Tuolumne

**Vicki Helmar**

**Agricultural Commissioner • Weights & Measures  
Animal Control • Air Pollution Control**

*Agricultural Commissioner  
Director of Weights & Measures  
Director of Animal Control  
Air Pollution Control Officer*

**Agricultural  
Commissioner  
Weights & Measures  
Air Pollution Control**  
Located at:  
22365 S Airport Rd.  
Sonora, CA 95370  
Phone: (209) 533-5691  
Fax: (209) 533-5520  
Email:  
AgCommissioner@tuolumnecounty.ca.gov

**Animal Control**  
Located at:  
10040 Victoria Place  
Jamestown, CA 95327  
Phone: (209) 694-2730

**All Mailing:**  
2 S. Green St.  
Sonora, CA 95370

To: A. G. Kawamura, Secretary  
California Department of Food and Agriculture

The Honorable Board of Supervisors, County of Tuolumne

Richard H. Pland, Chairperson, Fifth District  
Liz Bass, First District  
Paolo Maffei, Second District  
Teri A. Murrison, Third District  
Mark V. Thornton, Fourth District

Craig L. Pedro, County Administrator

I am pleased to submit, in accordance with Section 2279 of the California Food and Agriculture Code, Tuolumne County's Annual Crop and Livestock Report for 2007. This report provides a statistical description of Tuolumne County's agricultural production. The figures contained in this report represent gross values of agricultural commodities and do not reflect production costs or net returns to growers.

The value of agricultural commodities produced in Tuolumne County in 2007 is estimated at \$35,524,200. This represents a 6.2% decrease from last year's production of \$37,862,000. Decreases in livestock and poultry production and in timber receipts are primarily responsible for the drop in gross value.

I wish to express my appreciation to the agricultural producers, industry representatives, and public agencies who have cooperated in providing data for this report. I would also like to express sincere thanks to the Agricultural Department staff, especially Paul Rainey who compiled the report and Roberta Shields for her technical support.

Respectfully submitted

*Vicki Helmar*

Vicki Helmar  
Agricultural Commissioner

# **TUOLUMNE COUNTY DEPARTMENT OF AGRICULTURE**

## **2007 ANNUAL CROP REPORT**

### **TUOLUMNE COUNTY BOARD OF SUPERVISORS**

RICHARD H. PLAND, FIFTH DISTRICT, CHAIRPERSON,

LIZ BASS, FIRST DISTRICT

PAOLO MAFFEI, SECOND DISTRICT

TERI A. MURRISON, THIRD DISTRICT

MARK V. THORNTON, FOURTH DISTRICT

### **COUNTY ADMINISTRATOR**

CRAIG PEDRO

### **OFFICE PERSONNEL**

VICKI HELMAR

AGRICULTURAL COMMISSIONER

MARIAN CHAMBERS

DEPUTY AGRICULTURAL COMMISSIONER

PAUL V. RAINEY

SENIOR AGRICULTURAL BIOLOGIST

ROBERTA SHIELDS

DEPARTMENT SUPPORT TECHNICIAN

BRIAN DIXON

AGRICULTURAL FIELD ASSISTANT

RON ANDERSON

WILDLIFE SERVICES TECHNICIAN



Cover photo: Berries, olive oil, lavender oil, and grass fed beef are all produced by Hurst Ranch in Jamestown. Hurst Ranch also sells other locally grown products, feed, and agricultural supplies.

COMPILED BY PAUL V. RAINEY



## ***FRUIT AND VEGETABLES***

	YEAR	ACREAGE	TOTAL
ALL FRUIT AND VEGETABLES	2007	144	\$602,700
	2006	125	\$304,500 <sup>1</sup>



## ***FIELD CROPS***

CROP	YEAR	ACREAGE	PER ACRE	TOTAL	UNIT	\$/UNIT	TOTAL
HAY <sup>2</sup>	2007	600	2.1	1260	TON	\$ 94.30	\$118,800
	2006	600	2.5	1500	TON	\$ 76.00	\$114,000
IRRIGATED PASTURE	2007	1300			ACRE	\$127.00	\$165,100
	2006	1200			ACRE	\$120.00	\$144,000
RANGELAND	2007	200,000			ACRE	\$ 14.00	\$2,800,000
	2006	200,000			ACRE	\$ 14.00	\$2,800,000
TOTAL	2007						\$3,083,900
	2006						\$3,058,000

<sup>1</sup> revised

<sup>2</sup> Most of the hay is used on the farms where it is produced.

## ***LIVESTOCK***

ITEM	YEAR	NUMBER OF HEAD	TOTAL WEIGHT	UNIT	\$/UNIT	TOTAL
CATTLE AND CALVES	2007	11,240	65,754	CWT	\$ 93.70	\$ 6,161,800
	2006	9,550	71,625	CWT	\$ 89.30	\$ 6,396,100
SHEEP AND LAMBS	2007	1,365	1,911	CWT	\$ 90.50	\$ 172,900
	2006	1,360	1,904	CWT	\$ 84.00	\$ 159,900
HOGS AND PIGS	2007	320	736	CWT	\$ 48.80	\$ 35,900
	2006	320	736	CWT	\$ 47.90	\$ 35,300
OTHER LIVESTOCK AND POULTRY	2007					\$14,387,400
	2006					\$14,704,500
<b>TOTAL</b>	2007					\$20,758,000
	2006					\$21,295,800

## ***LIVESTOCK INVENTORIES***

ITEM <sup>3</sup>	2006	2007
ALL CATTLE AND CALVES	20,500	19,500
BEEF COWS AND HEIFERS TWO YEARS OR OLDER	10,450	9,930
STOCK SHEEP	910	1,020
HOGS	90	90

## ***LIVESTOCK AND POULTRY PRODUCTS***

ITEM	YEAR	TOTAL
MISC. PRODUCTS <sup>4</sup>	2007	\$20,500
	2006	\$19,300 <sup>5</sup>

---

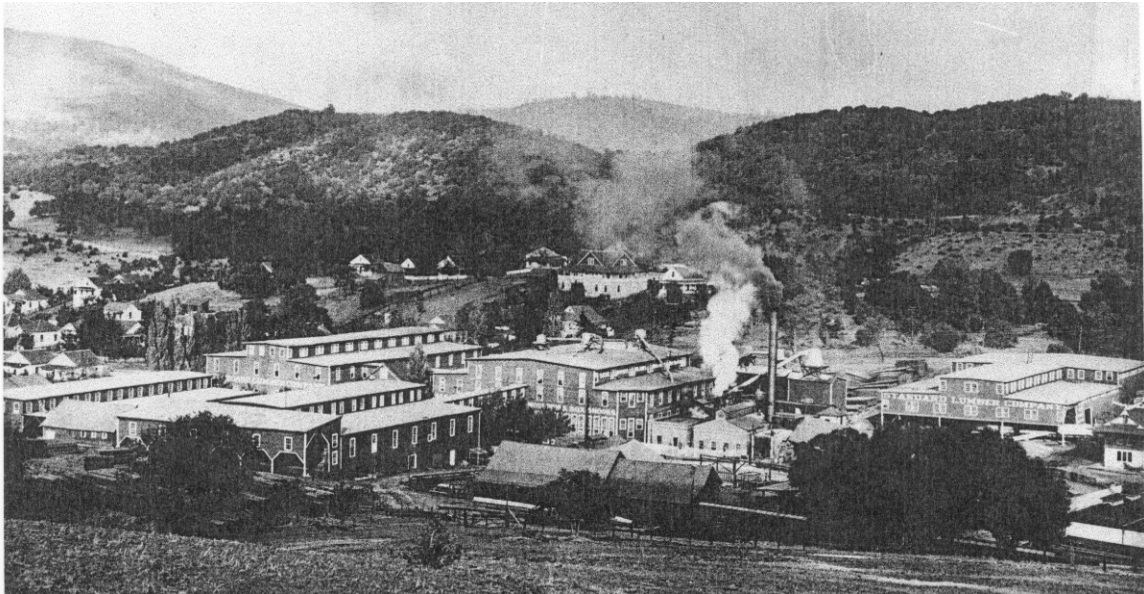
<sup>3</sup> all items include transient animals within Tuolumne County on January 1, 2008

<sup>4</sup> wool, eggs, hides

<sup>5</sup> revised

## ***APIARY AND NURSERY***

ITEM	YEAR	TOTAL
APIARY PRODUCTS	2007	\$ 19,400
	2006	\$ 32,000
NURSERY PRODUCTS <sup>6</sup>	2007	\$230,600
	2006	\$331,500
TOTAL	2007	\$250,000
	2006	\$363,500



## ***TIMBER***

ITEM	YEAR	BOARD FEET	UNIT <sup>7</sup>	\$/UNIT	TOTAL
PUBLIC AND PRIVATE FOREST <sup>8</sup>	2007	50,558	KBF	\$182.94	\$ 9,249,100
	2006	48,392	KBF	\$237.31	\$11,483,900
FUEL WOOD <sup>9</sup>	2007				\$ 1,560,000
	2006				\$ 1,337,000
TOTAL	2007				\$10,809,100
	2006				\$12,820,900

<sup>6</sup> Includes Christmas trees

<sup>7</sup> KBF=Thousand Board Feet

<sup>8</sup> preliminary – as reported by the state Board of Equalization

<sup>9</sup> market value

## ***SUMMARY***

	2006	2007
MISCELLANEOUS FRUIT AND VEGETABLES	\$ 304,500	\$ 602,700
FIELD CROPS	\$ 3,058,000	\$ 3,083,900
APIARY AND NURSERY PRODUCTS	\$ 363,500	\$ 250,000
LIVESTOCK AND POULTRY	\$ 21,295,800	\$ 20,758,000
LIVESTOCK AND POULTRY PRODUCTS	\$ 19,300	\$ 20,500
SUBTOTAL	\$ 25,041,100	\$ 24,715,100
TIMBER HARVESTED	\$ 12,820,900	\$ 10,809,100
TOTAL	\$ 37,862,000	\$ 35,524,200



# TUOLUMNE COUNTY

## ANNUAL SUSTAINABLE AGRICULTURE REPORT

### 2007

### ***PEST PREVENTION***

#### **EXCLUSION**

SHIPMENTS	NUMBER	REJECTIONS
Truck/Air Freight	30	0
Red Imported Fire Ant	2	0
Glassy-Winged Sharpshooter	75	0
Sudden Oak Death	6	0

#### **DETECTION: INSECT TRAPPING PROGRAM**

TYPE OF TRAP	NUMBER
Glassy Winged Sharpshooter	160
Gypsy Moth	250
Mediterranean Fruit Fly (Champ Traps)	10
Japanese Beetle	20
Apple Maggot (Compliance Agreement)	3
Vine Mealybug	11

### ***PEST ERADICATION***

Spotted Knapweed	Mechanical control	4 sites
	Chemical control	4 sites
Diffuse Knapweed	Mechanical control	1 site
Oblong Spurge	Chemical control	6 sites
Dyer's Woad	Mechanical control	1 site
Skeletonweed	Chemical control	4 sites
Canada Thistle	Chemical control	2 sites
Smooth Distaff Thistle	Surveyed	35 sites
	Chemical control	20 sites
White Horsenettle	Chemical control	1 site
Perennial Pepperweed	Chemical control	4 sites
Iberian Starthistle	Chemical control	2 sites



## BIOLOGICAL CONTROL PROGRAMS

PEST	AGENT/MECHANISM	SCOPE OF PROGRAM
Yellow Starthistle	<i>Bangasternus orientalis</i> <i>Urophora sirunaseva</i> <i>Eustenopus villosus</i> <i>Chaetorellia australis</i> <i>Puccinia jacea</i> var. <i>solstitialis</i>	countywide countywide countywide countywide selected sites
Grapeleaf Skeletonizer	<i>Apanteles harrisinae</i> <i>Ametadoria missella</i>	Tuolumne Tuolumne
Klamath Weed	<i>Chrysolina gemellata</i>	countywide
Italian Thistle	<i>Rhinocyllus conicus</i>	countywide
Ash Whitefly	<i>Encarsia partenopea</i>	countywide
Puncture Vine	<i>Microlainus lypriformis</i> <i>Microlainus larenyii</i>	countywide countywide
Red Gum Lerp Psyllid	<i>Psyllaephagus bliteus</i>	Don Pedro



*Urophora sirunaseva*

## ORGANIC PROGRAM

REGISTERED ORGANIC PRODUCERS<sup>10</sup>

8

<sup>10</sup> Includes turkeys, apples, eggs, and vegetables

## **TUOLUMNE COUNTY GENERAL INFORMATION**

COUNTY SEAT	SONORA
POPULATION (2004)	59,380
LAND AREA (ACRES)	1,415,781
Federally owned	
U.S. Forest Service	605,803
Yosemite National Park	435,847
Bureau of Land Management	47,352
New Melones Reservoir	9,906
Total	1,098,908
State and Local Government	2,866
Other Government (Water Use)	12,511
Restricted use private lands	
Timber Preserve Zone	83,978
Land Conservation Agreement (Williamson Act)	126,458
Total	210,436
Private land subject to development	91,060
RAILROADS	SIERRA RAILROAD
MAJOR ROADS	STATE HIGHWAY 49, STATE HIGHWAY 108, STATE HIGHWAY 120
MAJOR PASSES	SONORA PASS (9,628 FEET), TIOGA PASS (9,941 FEET)
HIGHEST POINT	MOUNT DANA (13,050 FEET)
MAJOR RIVERS	TUOLUMNE RIVER, STANISLAUS RIVER

### **CERTIFIED FARMERS' MARKETS**

SONORA: Saturdays, Theall and Stewart Streets, Sonora

TUOLUMNE VILLAGE MARKET: Wednesdays, Tuolumne Veterans Memorial Park

TWAIN HARTE VILLAGE MARKET: Fridays, Eproson Park, Twain Harte

