

Forage Sorghum Varieties, Yield and Quality for California



J. Dahlberg, R. Hutmacher, S. Wright, M. Keeley, G. Banuelos, J. Sievert, S. Rios, and R. Delgado



University of California

Agriculture and Natural Resources

Research and Extension Center System

Steve Wright Extension

ULTIMATE EXTENSIONS



University of California

Agriculture and Natural Resources | Research and Extension Center System

What is Sorghum?

- Hybrid Grain Sorghum-used primarily for animal and human consumption
- Hybrid Forage Sorghum-used for silage, green chop
- Hybrid Sudangrass-used primarily for hay production and some grazing
- Sweet Sorghum-used for molasses or syrup production
- Biomass sorghum-developed for renewable bio-products





University of California

Agriculture and Natural Resources | Research and Extension Center System

What Makes Forage Sorghums Different?

- Have been in California since the late 1800s
- Seed industry has been developed around forages
- Hybrids have been specifically bred for forage quality
- Introduction of novel genes for improvement



Height Genes

1.5 ft



4 ft



6 ft



8 ft



10 ft



University of California

Agriculture and Natural Resources | Research and Extension Center System

Photoperiod and Maturity Genes



University of California

Agriculture and Natural Resources | Research and Extension Center System

Drought Tolerance



University of California

Agriculture and Natural Resources ■ Research and Extension Center System

Roots are Important in Sorghum

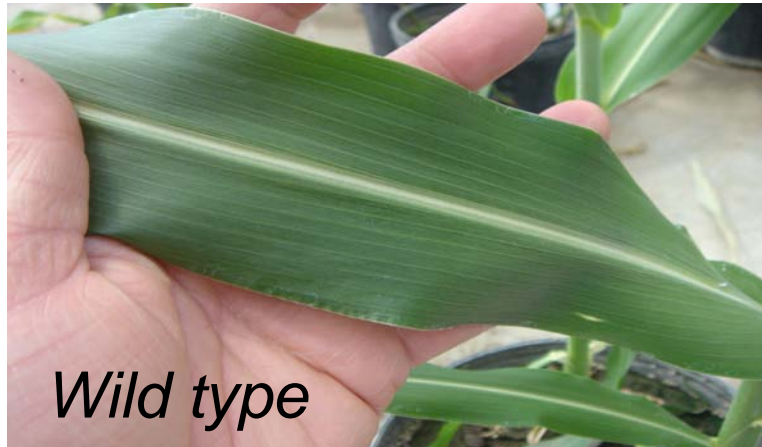


University of California

Agriculture and Natural Resources

Research and Extension Center System

bmr Genetics



University of California

Agriculture and Natural Resources

Research and Extension Center System

Issue with some bmr forages



University of California

Agriculture and Natural Resources | Research and Extension Center System

New Genetics



- Brachytic genes
 - Shortens internode length
- Has potential to resolve lodging issues with bmr forages



University of California

Agriculture and Natural Resources

Research and Extension Center System

Evaluating Forages in California

- Starting our 4th year of hybrid evaluations
- Grown at both Westside and Kearney Agricultural Research and Extension Centers
- Typically grown on less than 19 applied inches of water at both sites
- Approximately 125 lbs of N



University of California

Agriculture and Natural Resources | Research and Extension Center System

Data Collection

- Agronomic Data
 - Height
 - Flowering
 - Lodging
 - Yield
- Nutritional
 - Sent to Dairyland Labs



University of California

Agriculture and Natural Resources | Research and Extension Center System

Top Agronomic Performers 2011-2012

Hybrid	Company	Maturity	Height (ft)	% Lodging	Ton ac ⁻¹ 65% Moist
SS 506	Sorghum Partners, LLC.	L	10.5	40.8	36.4
1990	Sorghum Partners, LLC.	PS	8.9	46.7	34.6
Pacesetter BMR-Red	Richardson Seeds	PS	9.3	60.8	31.7
SS 405	Sorghum Partners, LLC.	ML	9.9	35.8	31.7
SS 304	Sorghum Partners, LLC.	M	9.1	60.0	30.2
Sordan Headless	Sorghum Partners, LLC.	PS	9.9	20.8	29.1
NK 300	Sorghum Partners, LLC.	ME	6.8	11.3	26.3
Silo 700D	Richardson Seeds	L	7.2	5.0	24.9
AS781	AR-B-Seeds	ML	6.1	1.3	24.9
Silo 700D BMR	Richardson Seeds	L	7.2	11.3	24.2
9500	Richardson Seeds	ML	6.4	9.6	24.0



University of California

Agriculture and Natural Resources | Research and Extension Center System

Agronomics continued

Hybrid	Company	Maturity	Height (ft)	% Lodging	Ton ac ⁻¹ 65% Moist
Trudan Headless	Sorghum Partners, LLC.	PS	10.3	13.8	23.9
Hikane II	Sorghum Partners, LLC.	ME	9.6	80.8	23.3
BH211 SBD	B-H Genetics	L	8.1	4.2	22.8
Grazex BMR 801	Sharp Brothers Seed	ML	9.7	77.9	22.5
Alta 7401	Advanta	L	6.1	2.5	22.0
BH312 FBD	B-H Genetics	ML	6.2	5.8	21.8
Alta 6402	Advanta US, Inc.	ME	8.7	11.7	21.6
Maxi Gain bmr-6	Coffey Seed	PS	8.9	70.4	19.5
Sordan 79	Sorghum Partners, LLC.	E	10.1	78.3	18.8
Great Scott BMR	Scott Seed	ML	6.9	13.3	18.1
Trudan 8	Sorghum Partners, LLC.	E	8.8	82.9	16.6



Nutrition Data

Hybrid	Company	Maturity	% ADF	% NDF	% TDN	Milk Lbs ton ⁻¹
SS 506	Sorghum Partners, LLC.	L	43.0	63.1	53.3	1711.8
1990	Sorghum Partners, LLC.	PS	45.3	66.7	52.3	1579.8
Pacesetter BMR-Red	Richardson Seeds	PS	43.0	65.7	54.6	1975.1
SS 405	Sorghum Partners, LLC.	ML	40.9	59.9	54.6	1819.4
SS 304	Sorghum Partners, LLC.	M	39.2	57.8	55.7	1910.2
Sordan Headless	Sorghum Partners, LLC.	PS	43.8	64.0	51.3	1463.0
NK 300	Sorghum Partners, LLC.	ME	35.1	51.4	58.5	2162.4
Silo 700D	Richardson Seeds	L	34.3	50.8	59.0	2071.2
AS781	AR-B-Seeds	ML	33.7	49.3	59.6	2360.4
Silo 700D BMR	Richardson Seeds	L	35.0	53.3	58.8	2267.3
9500	Richardson Seeds	ML	33.8	49.0	59.9	2204.6



University of California

Agriculture and Natural Resources | Research and Extension Center System

Nutrition Data

Hybrid	Company	Maturity	ADF	NDF	TDN	Lbs ton ⁻¹
Trudan Headless	Sorghum Partners, LLC.	PS	44.4	64.3	51.8	1405.8
Hikane II	Sorghum Partners, LLC.	ME	39.2	57.2	55.6	1967.6
BH211 SBD	B-H Genetics	L	37.6	55.4	58.0	2251.1
Grazex BMR 801	Sharp Brothers Seed	ML	40.5	60.2	55.2	1960.4
Alta 7401	Advanta	L	34.9	51.4	58.7	2251.1
BH312 FBD	B-H Genetics	ML	35.1	51.6	57.8	2296.3
Alta 6402	Advanta US, Inc.	ME	37.6	55.7	57.8	2161.6
Maxi Gain bmr-6	Coffey Seed	PS	42.0	61.5	53.1	1861.9
Sordan 79	Sorghum Partners, LLC.	E	41.7	60.4	53.4	1701.6
Great Scott BMR	Scott Seed	ML	35.5	53.2	58.4	2238.9
Trudan 8	Sorghum Partners, LLC.	E	37.7	54.6	57.2	1936.6



University of California

Agriculture and Natural Resources | Research and Extension Center System

Lessons to be Learned

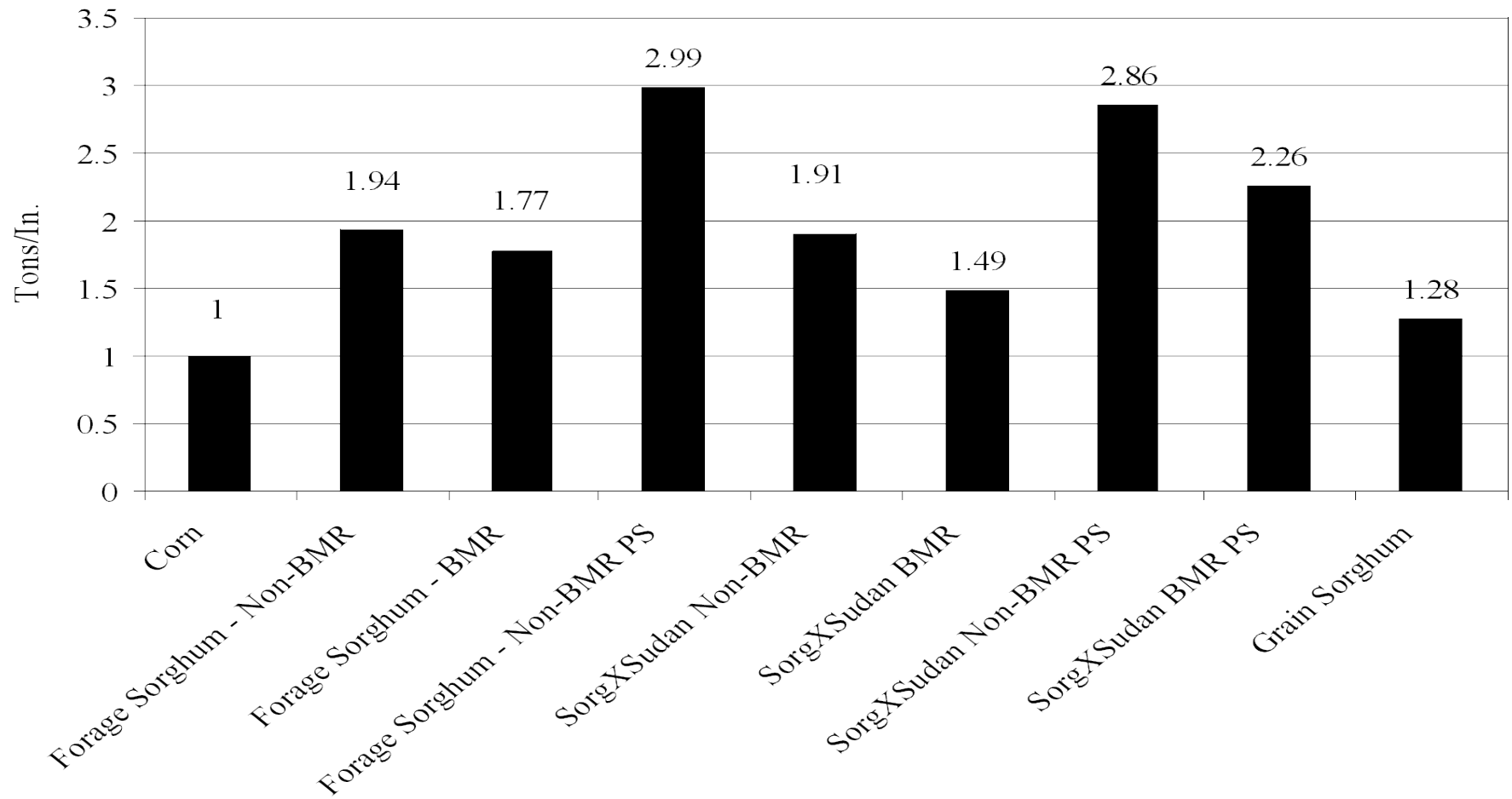
- Plant populations, not pounds per acre are necessary
- Managing N fertility is important
- Sorghum forages can be both high yielding and good quality
- Sorghum forages can be managed on less water than most other crops



University of California

Agriculture and Natural Resources ■ Research and Extension Center System

Water is the Key!



University of California

Agriculture and Natural Resources

Research and Extension Center System

Bottom Line:

Sorghum is Not Corn!!

- Grain is smaller
 - Processing is different
- Forages are not the same as grain
- Different agronomic practices to optimize yields
 - Require less water and fertilizer
 - Shorter growing season
- Different nutritional qualities which require different feed strategies
 - PS sorghum have no grain
 - Dual purpose sorghums need to be harvest at correct time or need the grain processed
 - Bmr have high digestibility, lower lignin



Questions

Look us up at: sorghum.ucanr.edu



University of California

Agriculture and Natural Resources | Research and Extension Center System