



2013 CROP REPORT

CHUCK MORSE
Agricultural Commissioner
Sealer of Weights & Measures

E-MAIL
morsec@co.mendocino.ca.us

TELEPHONE
(707) 463-4208



COUNTY OF MENDOCINO
DEPARTMENT OF AGRICULTURE
890 N BUSH STREET
UKIAH, CALIFORNIA 95482

DIANE CURRY
Assistant Agricultural Commissioner
Assistant Sealer of Weights & Measures

E-MAIL
curryd@co.mendocino.ca.us

FAX
(707) 463-0240

KAREN ROSS, SECRETARY
CALIFORNIA DEPARTMENT OF FOOD AND AGRICULTURE
and
THE HONORABLE BOARD OF SUPERVISORS OF MENDOCINO COUNTY
Carre Brown, 1st District John McCowen, 2nd District John Pinches, 3rd District, Chair
Dan Gjerde, 4th District Dan Hamburg, 5th District

In accordance with Section 2279 of the California Food and Agricultural Code, I am pleased to submit the 2013 annual crop report for Mendocino County. It is important to remember that this report reflects the **gross value** of agricultural commodities produced in the county and not the net returns for producers.

The total gross agricultural value for all commodities produced in 2013 was **\$222,683,200**, which represents a slight increase compared to the 2012 value of \$216,550,651. The leading agricultural commodity continues to be wine grapes, which posted another record value of **\$113,139,800**. Agricultural production, excluding timber, totaled **\$156,631,400**. Timber represents the second highest value commodity, with a gross "at mill" value of **\$66,051,800**. Mendocino County ranked 5th in the state in timber volumes and produced roughly 7% of the states total timber harvest in 2013.

The increase in the overall gross value for 2013 resulted primarily from improved wine grape and pear returns. Once again, favorable growing and harvest conditions for wine grapes produced a 10% increase in yields and an 11% increase in overall value above the record numbers seen in 2012. Overall pear returns were improved on increased tonnage and a higher percent of pack out (fresh) pears. Prices remained stable for most varieties.

Cattle returns were higher based on good market prices and a subsequent reduction in inventory to take advantage of the up market while also responding to the drought. Milk valuation and production offset each other to return virtually the same gross receipts as compared to 2012.

I would like to extend my gratitude and appreciation to all of our agricultural producers who furnish the necessary information that make this report possible. I would also like to thank the University of California Cooperative Extension and my outstanding staff, particularly Jennifer Krauss, for their invaluable assistance and contributions to this report.

Respectfully submitted,

Chuck Morse
Agricultural Commissioner/Sealer

**MENDOCINO COUNTY
DEPARTMENT OF AGRICULTURE
ANNUAL CROP REPORT FOR 2013**

MENDOCINO COUNTY BOARD OF SUPERVISORS

John Pinches (Chair) . . . District 3	
Carre Brown District 1	Dan Gjerde District 4
John McCowen . . . District 2	Dan Hamburg . . . District 5

Department of Agriculture

CHUCK MORSE




Agricultural Commissioner / Sealer of Weights and Measures

DIANE CURRY	Assistant Agricultural Commissioner / Assistant Sealer of Weights & Measures
RAY HARRIE	Ag/Measurement Standards Specialist III
TASHINA SANDERS	Ag/Measurement Standards Specialist III
AARON HULT	Ag/Measurement Standards Specialist II
DARIO GOTCHET	Ag/Measurement Standards Specialist I
JENNIFER KRAUSS	Office Manager
CARALYN GULSETH	Staff Assistant II

SEASONAL INSPECTORS

Amanda Ekstrand	Sheryl Greene
Ray Hall	Bill Kubran
Sam Upton	

FRUIT AND NUT CROPS

COMMODITY	YEAR	BEARING ACREAGE	TONS PER ACRE	PRODUCTION IN TONS	\$ PER TON	VALUE
APPLES, TOTAL	2013	221	6.1	1,348	\$ 612 ⁽⁴⁾	\$ 825,000
	2012	230	6.7	1,541	\$ 610 ⁽⁴⁾	\$ 880,900
<i>Fresh</i>	2013			676	\$ 963	\$ 651,000
	2012			724	\$ 938	\$ 679,100
<i>Other</i>	2013			672	\$ 258	\$ 173,400
<i>(Dried, Juice, etc.)</i>	2012			817	\$ 247	\$ 201,800
WINE GRAPES, TOTAL	2013	16,750	4.7	77,920	\$ 1,452 ⁽⁴⁾	\$ 113,139,800
	2012	16,724	4.2	71,095	\$ 1,439 ⁽⁴⁾	\$ 102,305,700
<i>White</i>	2013	6,091	6	36,355		
<i>Varieties</i>	2012	6,143	5.1	31,087		
<i>Red</i>	2013	10,659	3.9	41,565		
<i>Varieties</i>	2012	10,607	3.8	40,008		
						
PEARS, TOTAL (1)	2013	1,339	20.7	27,663	\$ 467 ⁽⁴⁾	\$ 12,918,600
	2012	1,339	19.1	25,599	\$ 470 ⁽⁴⁾	\$ 12,041,400
<i>Bartlett (2)</i>	2013	1,173	22	25,830	\$ 421 ⁽⁴⁾	\$ 10,881,700
	2012	1,178	20	23,537	\$ 420 ⁽⁴⁾	\$ 9,894,400
<i>Canning</i>	2013			17,997	\$ 298	\$ 5,363,100
	2012			17,352	\$ 293	\$ 5,084,100
<i>Fresh (2)</i>	2013			6,249	\$ 857	\$ 5,355,400
	2012			5,032	\$ 930	\$ 4,682,600
<i>Other</i>	2013			1,584	\$ 103	\$ 163,200
<i>(Baby Food</i>	2012			1,150	\$ 111	\$ 127,700
<i>Dried, Paste)</i>						
<i>Bosc (2)</i>	2013	104	12.1	1,260	\$ 939	\$ 1,183,100
	2012	104	13.0	1,347	\$ 855	\$ 1,151,700
<i>Red (2)</i>	2013	62	9.2	573	\$ 1,450	\$ 830,900
	2012	57	12.5	715	\$ 1,392	\$ 995,300
MISC. TOTAL (3)	2013	247				\$ 1,000,000
	2012	234				\$ 1,100,000
TOTALS	2013	18,557				\$ 127,883,400
	2012	18,527*				\$ 116,328,000

(1) Does not include misc./other pears. See (3)

(2) The fresh values listed for pears are FOB values. The actual average prices paid per ton to the growers (farm gate values) for 2013 were: Bartlett \$317, Bosc \$593, and Reds \$621.
for 2012 were: Bartlett \$320, Bosc \$488, and Reds \$471.

(3) Miscellaneous includes berries, cherries, chestnuts, olives, other pears, peaches, persimmons, pistachios and walnuts

(4) Weighted average

*2012 Amended

Some Values throughout this report may not compute exactly due to computational rounding.

FRUIT, NUT, AND GRAPEVINE ACREAGE

CROP	ACRES BEARING	ACRES NON-BEARING	TOTAL
APPLES	221	0	221
WINE GRAPES, TOTAL	16,750	459	17,209
Red	10,659	308	10,967
White	6,091	151	6,242
OLIVES	110	4	114
PEARS, TOTAL	1,358	5	1,363
Bartlett	1,173	2	1,175
Red	62	0	62
Bosc	104	3	107
Other	19	0	19
WALNUTS, ENGLISH	38	0	38
MISCELLANEOUS*	80	0	80
TOTALS	18,557	468	19,025

*Miscellaneous includes: Berries, cherries, chestnuts, guava, peaches, persimmons, pistachios, plums, and table grapes.



LIVESTOCK INVENTORIES

COMMODITY	2013	2012
All Cattle and Calves	17,400	18,100
Sheep and Lambs, all	10,100	9,000
Hogs and Pigs	1,270	1,450
Other Livestock*	2,280	n/a

*Other Livestock includes goats, bison, llama and rabbits

LIVESTOCK PRODUCTION

COMMODITY	YEAR	NO. OF HEAD	TOTAL CWT** LIVE WT.	\$ PER	\$ VALUES
CATTLE AND CALVES	2013	9,500	61,750	\$141	\$8,706,800
	2012	9,400	65,800	\$129	\$8,488,200
SHEEP AND LAMBS	2013	4,150	4,150	\$121	\$502,200
	2012	3,100	2,697	\$159	\$428,800
HOGS AND PIGS	2013	730	1,329	\$78	\$103,700
	2012	750	1,215	\$69	\$83,700
MISCELLANEOUS*	2013				\$650,000
	2012				\$750,000
TOTALS	2013				\$9,962,700
	2012				\$9,750,700

*Miscellaneous includes goats, pigeons, poultry, rabbits, turkeys, bison and aquaculture (fish farms).

**CWT= 100 lbs.



LIVESTOCK AND POULTRY PRODUCTS

COMMODITY	YEAR	PRODUCTION IN LBS.	PER UNIT	\$ VALUE
MILK	2013	188,446 CWT.	\$19.75	\$3,721,800
	2012	192,833 CWT.	\$19.00	\$3,663,800
WOOL	2013	39,600 LB.	\$1.96	\$77,600
	2012	31,200 LB.	\$1.92	\$59,900
MISCELLANEOUS*	2013			\$1,500,000
	2012			\$1,800,000
TOTALS	2013			\$5,299,400
	2012			\$5,523,700

*Miscellaneous includes apiary, eggs, emus, cheese, manure, and ostriches.

NURSERY PRODUCTION

COMMODITY	YEAR	GREENHOUSE SQUARE FEET	FIELD ACRES	\$ VALUES
Nursery*	2013	93,539	30	\$1,445,500
	2012	96,769	31	\$1,611,900
Christmas Trees	2013	N/A	N/A	\$12,100
	2012	N/A	N/A	\$15,000
TOTALS	2013	93,539	30	\$1,457,600
	2012	96,769	31	\$1,626,900

*Includes turf and cut flowers



VEGETABLE CROPS

COMMODITY	YEAR	ACRES	\$ VALUES
Miscellaneous Vegetables*	2013	340	\$1,200,000
	2012	320	\$900,000

*Includes beans, sweet corn, garlic, herbs, melons, peas, potatoes, squash, tomatoes, etc.

FIELD CROPS

COMMODITY	YEAR	ACRES	YIELD/ ACRE	TOTAL YIELD	PER AUM	\$ VALUES
IRRIGATED PASTURE	2013	6,000	9.00 AUM*	54,000	\$22.00	\$1,188,000
	2012	6,000	9.00 AUM*	54,000	\$20.00	\$1,080,000
PASTURE, other (grassland, coast bench)	2013	363,000	1.01 AUM*	366,630	\$12.00	\$4,399,600
	2012	365,000	1.03 AUM*	376,000	\$11.10	\$4,173,600
RANGE	2013	355,000	.67 AUM*	237,850	\$9.00	\$2,140,700
	2012	355,000	.71 AUM*	252,100	\$8.25	\$2,079,800
MISCELLANEOUS**	2013					\$3,100,000
	2012					\$3,500,000
TOTALS	2013					\$10,828,300
	2012					\$10,833,400

*AUM means Annual Unit Month (food required to feed a 1,000 pound steer for one month).

**Miscellaneous includes alfalfa, barley, beans, corn, hay and oats.

FOREST PRODUCTS

TIMBER	2013	2012
Log Production (board feet)	111,574,000	121,850,000
Total Stumpage Value, net	\$26,975,151	\$28,940,451
Total Value at Mill, gross	\$66,051,800	\$71,587,951

- 1) Calendar year 2013 showed a slight decrease in timber harvest volume when compared to 2012.
- 2) The average price for stumpage based on the information provided by the Board of Equalization is approximately \$242/mbf for reported timber harvested in Mendocino County.
- 3) Though harvest yields were slightly less, stubpage values were slightly higher - \$242/mbf for 2013 compared to \$237/mbf for 2012. The harvest activity in Mendocino County represents 100% extraction from private lands.
- 4) The combined value of delivered value at the mill includes both stumpage (\$242/mbf) and logging and hauling costs (approx. \$350/mbf) for a total value of \$592/mbf=\$66,051,808.
- 5) Mendocino County produced approximately 7% of the total timber produced in the state in 2013. The State's reported total timber harvest volume for 2013 = 1,645,446,000 board feet.
- 6) Mendocino County ranked 5th in the state in timber volumes for 2013. The top ranking counties in 2013 were Shasta, Humboldt, Siskiyou, Plumas, and Mendocino.

Data based on information from Gregory A. Giusti, U.C. Cooperative Extension.

10 YEAR COMPARISON (LOG PRODUCTION)

YEAR	Log Production (Board Feet)	Value at Mill (Gross)
2013	111,574,000	\$66,051,800
2012	121,850,000	\$71,587,951
2011	89,795,000	\$59,085,110
2010	94,724,000	\$57,673,418
2009	43,801,000	\$25,448,400
2008	92,652,000	\$67,004,000
2007	103,031,000	\$74,594,400
2006	110,168,000	\$86,481,900
2005	120,841,000	\$89,441,000
2004	109,548,000	\$66,605,200



SUSTAINABLE AGRICULTURE

ORGANIC ACRES

CROPS	ACRES
Wine grapes	4,106
Fruits & Nuts	317
Vegetables	54
Herbs	17
Pasture/Forage/Grain	5,710
Nursery & Cut Flowers	6
TOTAL	10,210



PEST EXCLUSION

Parcel Post & Truck Shipment Inspections

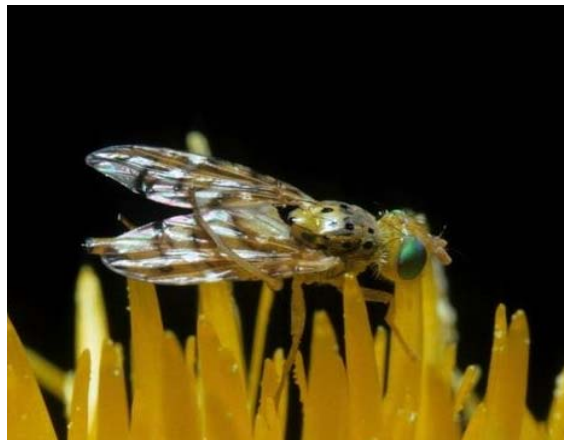
SHIPMENTS INSPECTED	EXOTIC PESTS INTERCEPTED	SHIPMENTS REJECTED
2,094	5	11

BIOLOGICAL CONTROL

BIO-CONTROL AGENT	SCOPE OF PROGRAM
Bull Thistle Gall Fly.....	3 Sites
Gorse Weevil.....	Generally Distributed
Gorse Spider Mite.....	Generally Distributed
Italian Thistle Seed Head Weevil.....	Widely Distributed
Klamath Weed Beetles.....	Widely Distributed
Klamath Weed Root Borers.....	Widely Distributed
Puncture Vine Seed Weevil.....	Generally Distributed
Puncture Vine Stem Weevil.....	Generally Distributed
Tansy Ragwort Cinnabar Moth.....	Established
Tansy Ragwort Flea Beetle.....	Established
Yellow Starthistle Seed Head Weevil.....	Widely Distributed
Yellow Starthistle Gall Forming Fly.....	Widely Distributed
Yellow Starthistle Hairy Weevil.....	Generally Distributed
Yellow Starthistle Peacock Fly.....	Widely Distributed

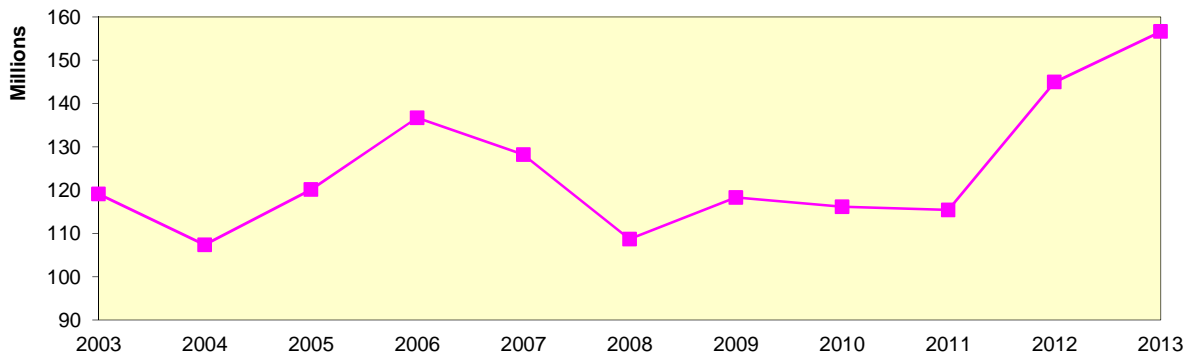


Klamath Weed Beetle
Image by Norman E. Rees, USDA
Agricultural Research Service - Retired,
Bugwood.org



False Peacock Fly
Image by Mark Schwarzlander,
University of Idaho, Bugwood.org

**VALUE OF MENDOCINO COUNTY AGRICULTURE (EXCLUDING TIMBER)
2003- 2013**



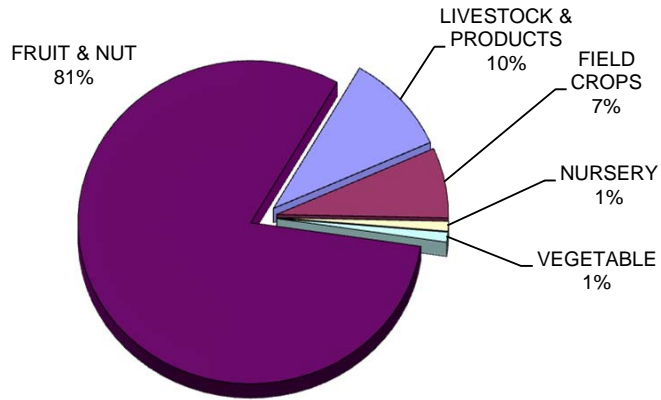
MILLION DOLLAR CROPS

WINE GRAPES	\$	113,139,800
TIMBER	\$	66,051,800
BARTLETT PEARS	\$	10,881,700
CATTLE & CALVES	\$	8,706,800
PASTURE	\$	4,399,600
MILK	\$	3,721,800
NURSERY	\$	1,457,600
PASTURE, IRRIGATED	\$	1,188,000
BOSC PEARS	\$	1,183,100



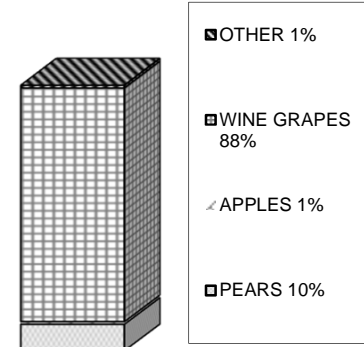
SHARES OF AGRICULTURAL VALUE

ALL AGRICULTURE (EXCLUDING TIMBER)



TOTAL \$ 156,621,400

FRUIT & NUT CROPS



TOTAL \$127,883,400



SUMMARY OF PRODUCTION

COMMODITY	2013	2012
FRUITS AND NUTS	\$ 127,883,400	\$ 116,328,000
LIVESTOCK PRODUCTION	\$ 9,962,700	\$ 9,750,700
LIVESTOCK AND POULTRY PRODUCTS	\$ 5,299,400	\$ 5,523,700
NURSERY PRODUCTION	\$ 1,457,600	\$ 1,626,900
VEGETABLE CROPS	\$ 1,200,000	\$ 900,000
FIELD CROPS	\$ 10,828,300	\$ 10,833,400
FOREST PRODUCTS	\$ 66,051,800	\$ 71,587,951
TOTALS	\$ 222,683,200	\$ 216,550,651

SUPPLEMENT TO CROP REPORT: COMMERCIAL FISH CATCH

COMMODITY	TOTAL LBS	TOTAL VALUE
SALMON, CHINOOK	1,407,767	\$ 7,664,761
SEA URCHIN, RED	4,233,702	\$ 3,637,077
CRAB, DUNGENESS	872,929	\$ 2,429,648
SABLEFISH	583,323	\$ 1,414,198
SOLE, DOVER	1,048,632	\$ 468,853
ROCKFISH, CHILIPEPPER	558,653	\$ 363,268
SOLE, PETRALE	220,805	\$ 286,717
THORNYHEAD, LONGSPINE	499,905	\$ 225,393
SWORDFISH	41,974	\$ 146,857
THORNYHEAD, SHORTSPINE	159,032	\$ 142,780
MICELLANEOUS	651,323	\$ 501,348
TOTALS	10,278,045	\$ 17,280,900



COMMERCIAL FISH CATCH TEN YEAR VALUE COMPARISON

YEAR	POUNDS	VALUE
2013	10,278,045	\$ 17,280,900
2012	8,884,029	\$ 15,680,257
2011	8,187,209	\$ 12,438,515
2010	7,784,183	\$ 7,691,243
2009	8,172,353	\$ 7,434,164
2008	7,203,296	\$ 7,112,954
2007	5,931,839	\$ 7,038,220
2006	5,468,557	\$ 5,763,048
2005	6,603,170	\$ 6,615,121
2004	7,058,011	\$ 7,941,313

Source - State of California Department of Fish and Game
All figures are rounded - figures are preliminary

UKIAH 100 YEAR RAINFALL DATA (FROM UKIAH FIRE DEPARTMENT RECORDS)

<u>SEASON</u>	<u>TOTAL</u>	<u>SEASON</u>	<u>TOTAL</u>	<u>SEASON</u>	<u>TOTAL</u>
1912-13	33.40	1952-53	45.06	1992-93	50.49
1913-14	54.85	1953-54	35.74	1993-94	23.73
1914-15	49.28	1954-55	25.63	1994-95	58.88
1915-16	34.80	1955-56	51.09	1995-96	44.10
1916-17	30.23	1956-57	32.36	1996-97	39.07
1917-18	23.43	1957-58	58.87	1997-98	63.95
1918-19	37.23	1958-59	26.42	1998-99	34.77
1919-20	19.05	1959-60	32.60	1999-00	33.81
1920-21	47.94	1960-61	34.89	2000-01	26.68
1921-22	28.74	1961-62	31.46	2001-02	31.74
1922-23	30.35	1962-63	44.45	2002-03	49.70
1923-24	16.19	1963-64	24.96	2003-04	38.99
1924-25	47.44	1964-65	50.84	2004-05	41.46
1925-26	26.33	1965-66	35.46	2005-06	60.39
1926-27	47.32	1966-67	43.16	2006-07	26.15
1927-28	34.94	1967-68	32.95	2007-08	31.64
1928-29	24.44	1968-69	51.28	2008-09	22.68
1929-30	31.08	1969-70	48.71	2009-10	40.51
1930-31	20.06	1970-71	38.31	2010-11	42.78
1931-32	27.67	1971-72	25.61	2011-12	23.50
1932-33	24.71	1972-73	42.09	2012-13	24.05
1933-34	25.21	1973-74	57.09		
1934-35	33.05	1974-75	38.60		
1935-36	37.83	1975-76	18.75		
1936-37	29.24	1976-77	14.20		
1937-38	55.13	1977-78	53.66		
1938-39	22.86	1978-79	30.23		
1939-40	41.01	1979-80	44.79		
1940-41	56.92	1980-81	26.82		
1941-42	48.21	1981-82	55.82		
1942-43	40.41	1982-83	70.19		
1943-44	26.19	1983-84	43.76		
1944-45	31.74	1984-85	27.40		
1945-46	36.11	1985-86	48.68		
1946-47	25.90	1986-87	25.25		
1947-48	32.93	1987-88	30.22		
1948-49	27.53	1988-89	31.48		
1949-50	29.75	1989-90	26.91		
1950-51	42.28	1990-91	26.00		
1951-52	47.74	1991-92	31.38		



FISCAL YEAR DATA

FIVE YEAR VALUE COMPARISON

ALL COMMODITIES

YEAR	FRUIT/ NUTS	LIVESTOCK PRODUCTION	LIVESTOCK AND POULTRY PRODUCTS	NURSERY PROD.	VEG PROD.	FIELD CROPS	TOTAL
2013	\$ 127,883,400	\$ 9,962,700	\$ 5,299,400	\$ 1,457,600	\$ 1,200,000	\$ 10,828,300	\$ 156,631,400
2012	\$ 116,328,000	\$ 9,750,700	\$ 5,523,700	\$ 1,626,900	\$ 900,000	\$ 10,833,400	\$ 144,962,700
2011	\$ 85,339,400	\$ 8,859,100	\$ 6,953,200	\$ 2,105,000	\$ 900,000	\$ 11,250,600	\$ 115,407,300
2010	\$ 87,134,900	\$ 7,718,300	\$ 6,043,700	\$ 3,187,000	\$ 1,200,000	\$ 10,907,500	\$ 116,191,400
2009	\$ 91,537,300	\$ 7,229,500	\$ 5,973,900	\$ 2,900,000	\$ 1,000,000	\$ 9,509,000	\$ 118,149,700



TOP TEN GRAPE VARIETY VALUES

VARIETY	Acres Bearing	Acres Total	TONS	VALUE PER TON	TOTAL VALUE
Chardonnay	4,265	4,771	28,192.7	\$1,299.25	\$36,629,365
Pinot Noir	2,625	2,659	8,736.1	\$2,655.90	\$23,202,207
Cabernet Sauvignon	2,448	2,638	9,698.0	\$1,685.32	\$16,344,233
Zinfandel	1,931	1,955	6,931.6	\$1,465.63	\$10,159,160
Merlot	1,499	1,500	7,745.8	\$1,193.21	\$9,242,366
Sauvignon Blanc	715	717	4,240.0	\$1,174.59	\$4,980,262
Petite Sirah	558	569	2,315.5	\$1,574.55	\$3,645,871
Syrah	703	703	2,741.0	\$1,302.35	\$3,569,741
Carignane	357	357	1,221.2	\$1,018.57	\$1,243,878
Gewurtzraminer	206	206	1,041.7	\$1,137.82	\$1,185,267

MENDOCINO COUNTY WINE GRAPE VALUE VS TIMBER VALUE

