

# *Pruning and thinning Prime-Ark 45 blackberry for extended season production in coastal California*

*Mark Gaskell, Farm Advisor  
UCCE - San Luis Obispo*

- *Traditional floricanes blackberries bear on one-year old wood*
  - *have a limited production season*



- *Primocane fruiting varieties fruit on current seasons growth*
  - *more flexibility to manage harvest season*

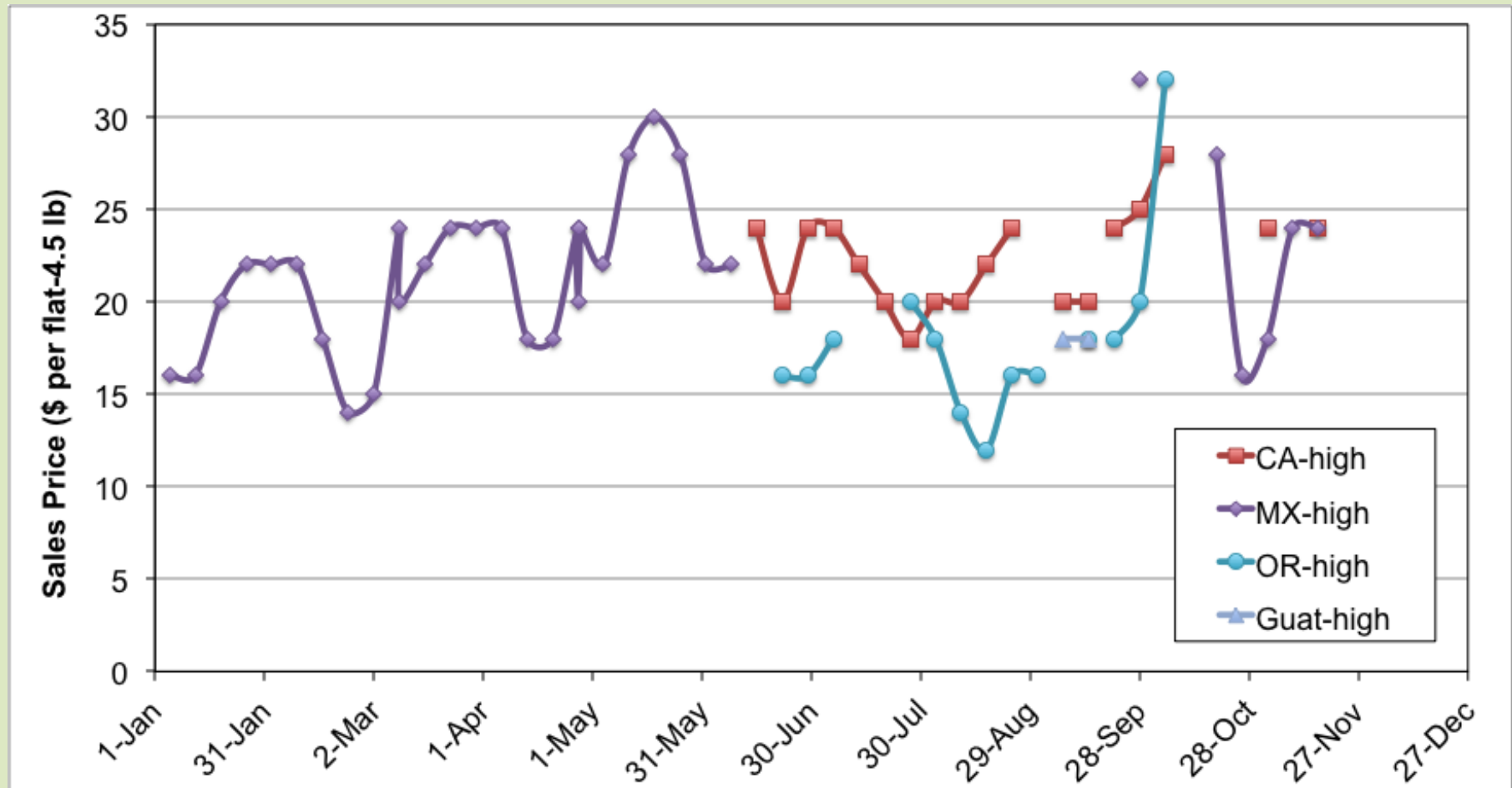




# *Primocane fruiting offers new management options*



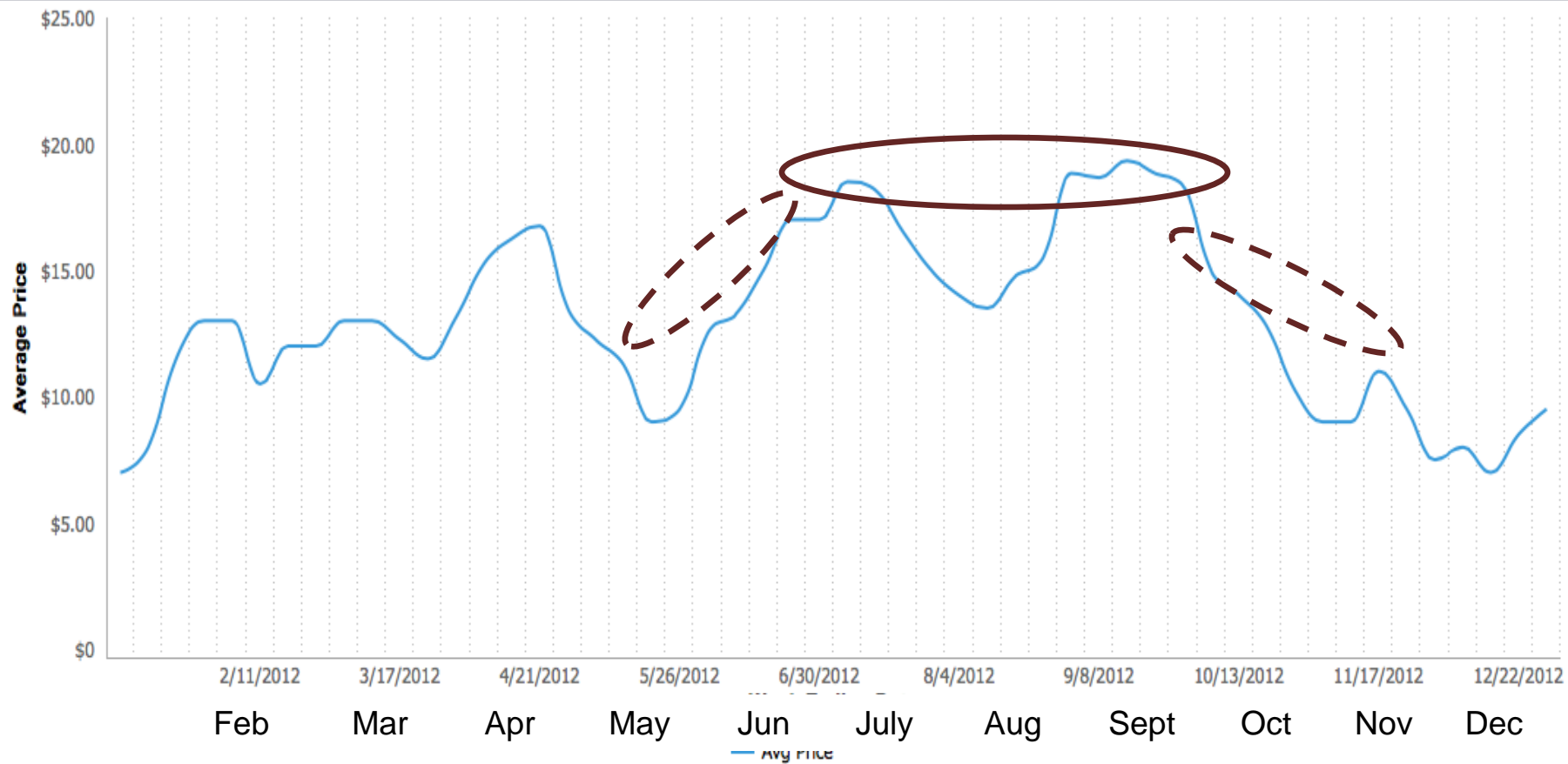
## *Blackberry, conventional – LA Terminal Market - 2013*



# All Shipping Points

\$14.05

Average Price Trend



# *Field trials to evaluate timing of mow-down and tip pruning of Primeark-45 blackberry*

- *Previous research showed advantages to tip pruning for primocane production*
  - *may also treat has floricanes*
- *Our early trials showed earlier was better Jan VS May*
- *Mow-down January 15, February 15, March 15*
- *Important market window remains*

*June > December?*





*Tip pruning > force branching to increase fruiting branches and yield.*

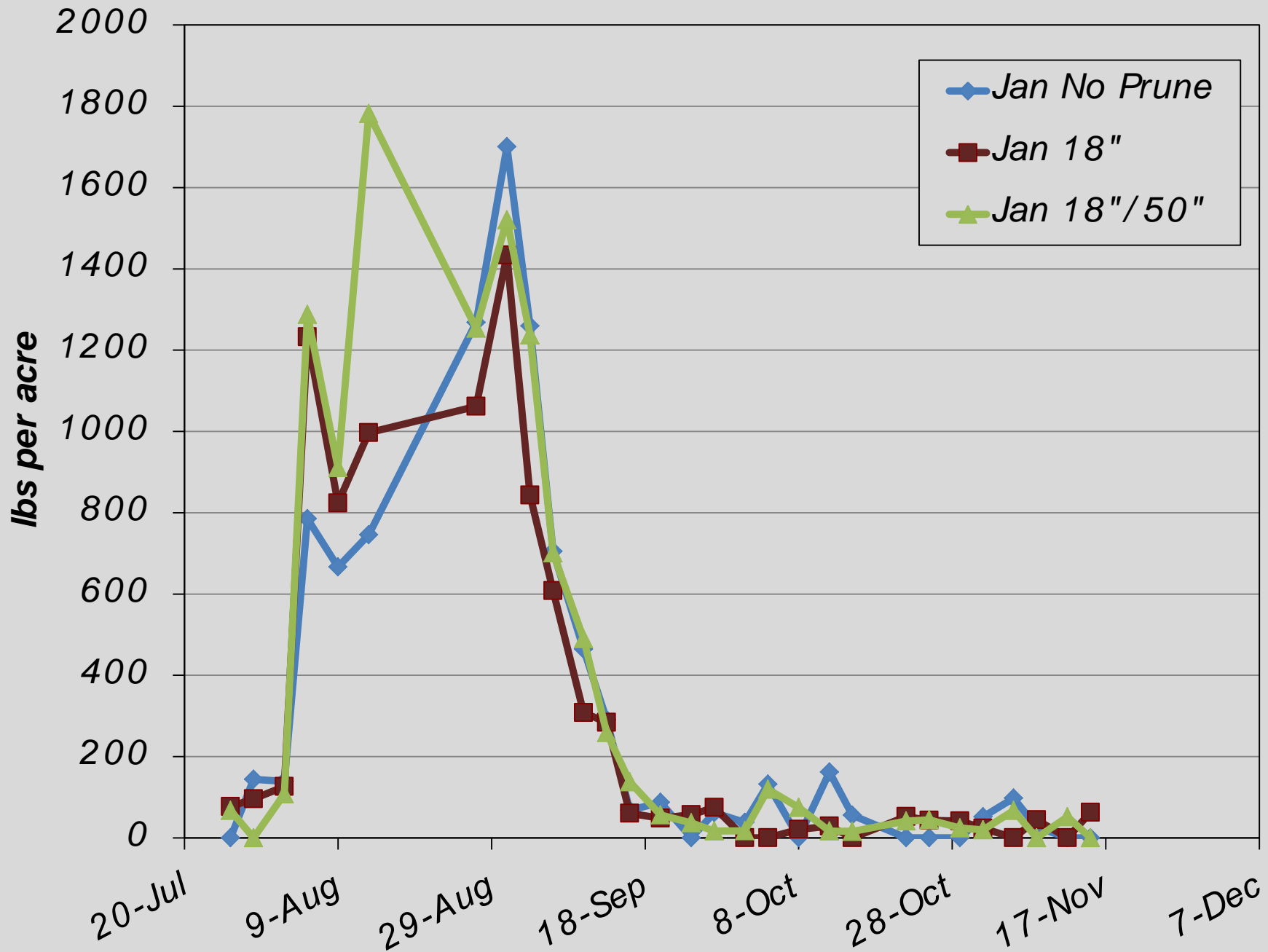
- *Timing is important  
earlier is better once 18" tall  
"hard" tipping may offer additional advantages? - timing*
- *When? - Repeat later?*

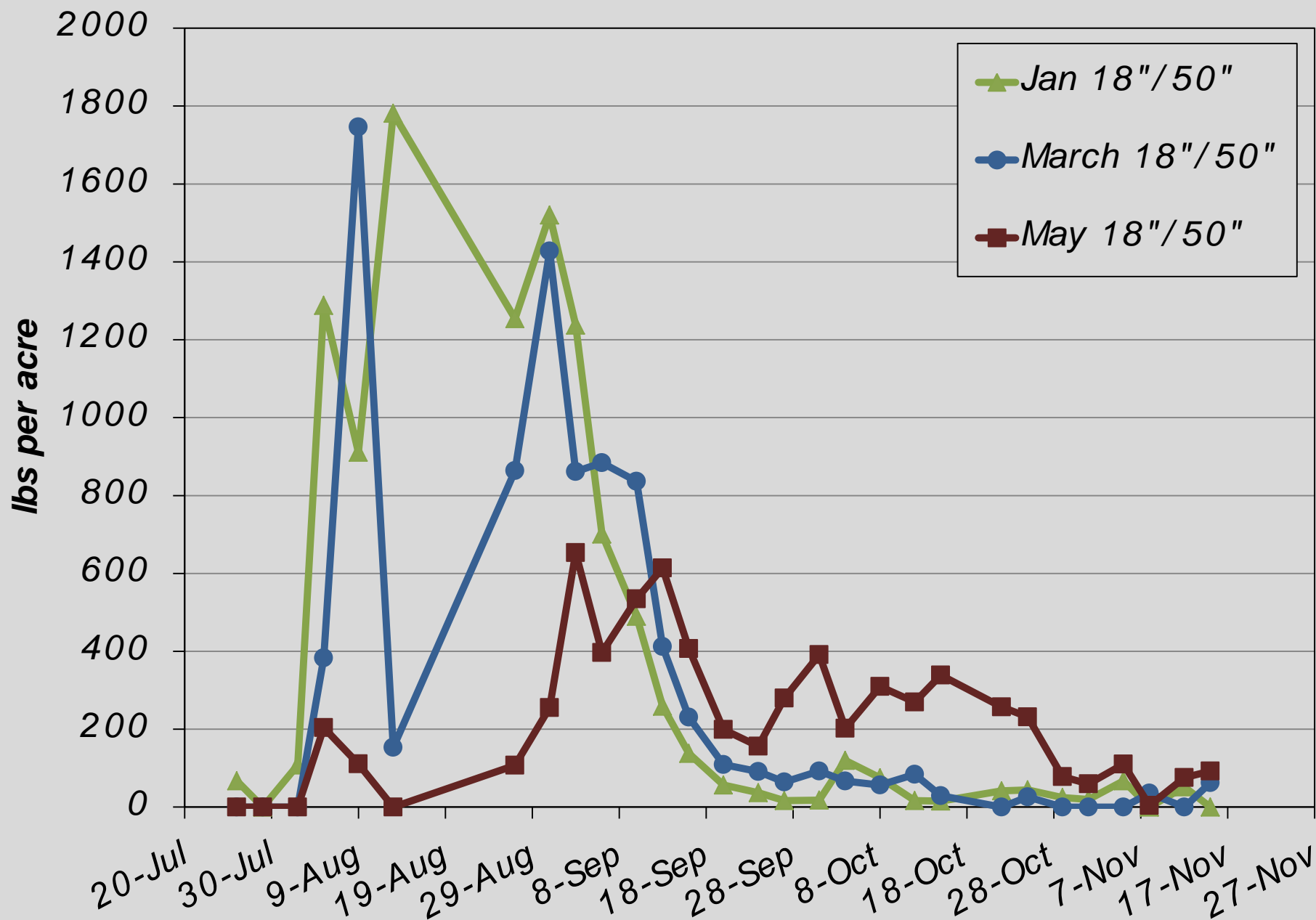


## *2013 Primeark 45 pruning / tipping trials*

- *Two sites*
  - > Nipomo – open field until June*
  - > Los Alamos – tunnel from beginning*
- *Mow-down at varying times – January > April*
  - + floricanes – Los Alamos*
- *Tipping height (Nipomo)*
  - 18"*
  - 50"*
  - 18' / 50"*
  - none*



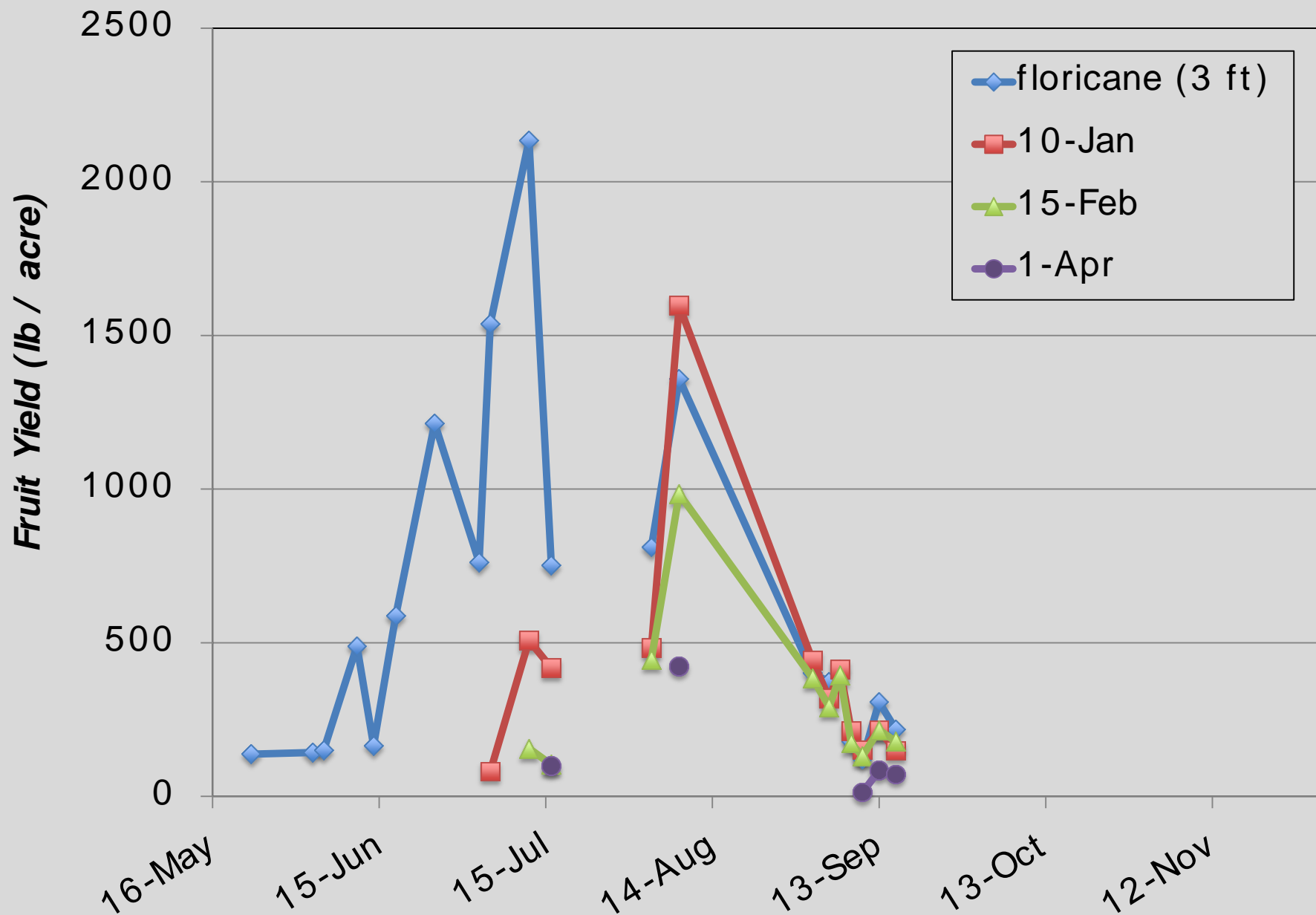




## *Total Seasonal Berry Yield (marketable)*

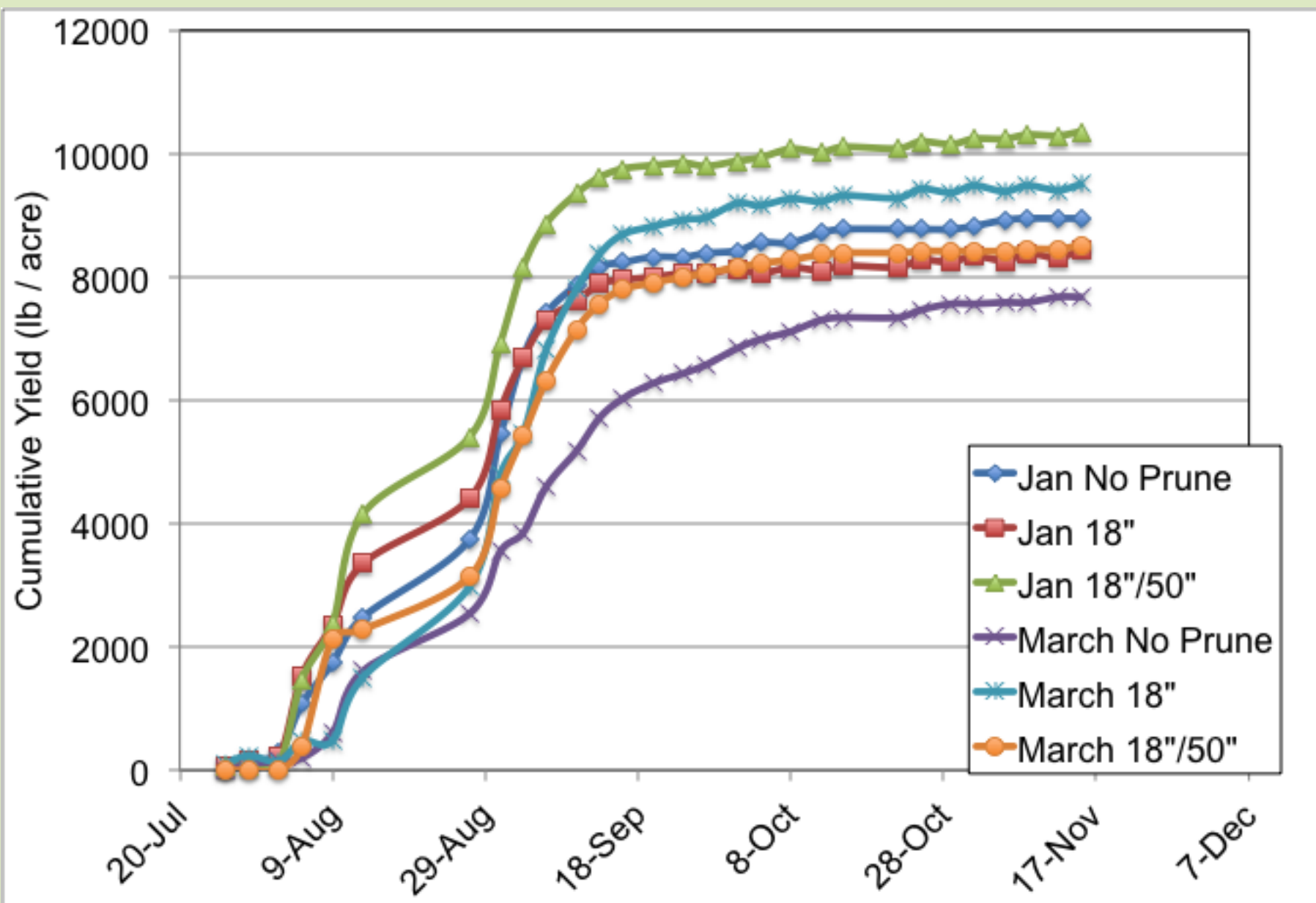
Pruning Treatment	Yield (lb / acre)
January mow / no tip	8,960
January mow 18" tip	8,481
January mow 18" tip + 50" tip	10,469
March mow / no tip	7,697
March mow / 18" tip	9,530
March mow / 18" tip + 50" tip	8,518
May mow / no tip	5,762
May mow / 18" tip	6,392
May mow / 18" + 50" tip	6,358

*Weekly marketable blackberry production from tunneled Primeark 45 blackberry with varying mow-down periods – 2013 season, Los Alamos, CA*





*Total Seasonal Berry Yield (marketable) - 2013*



*Primocane vegetative growth may be excessive in warm tunnels*

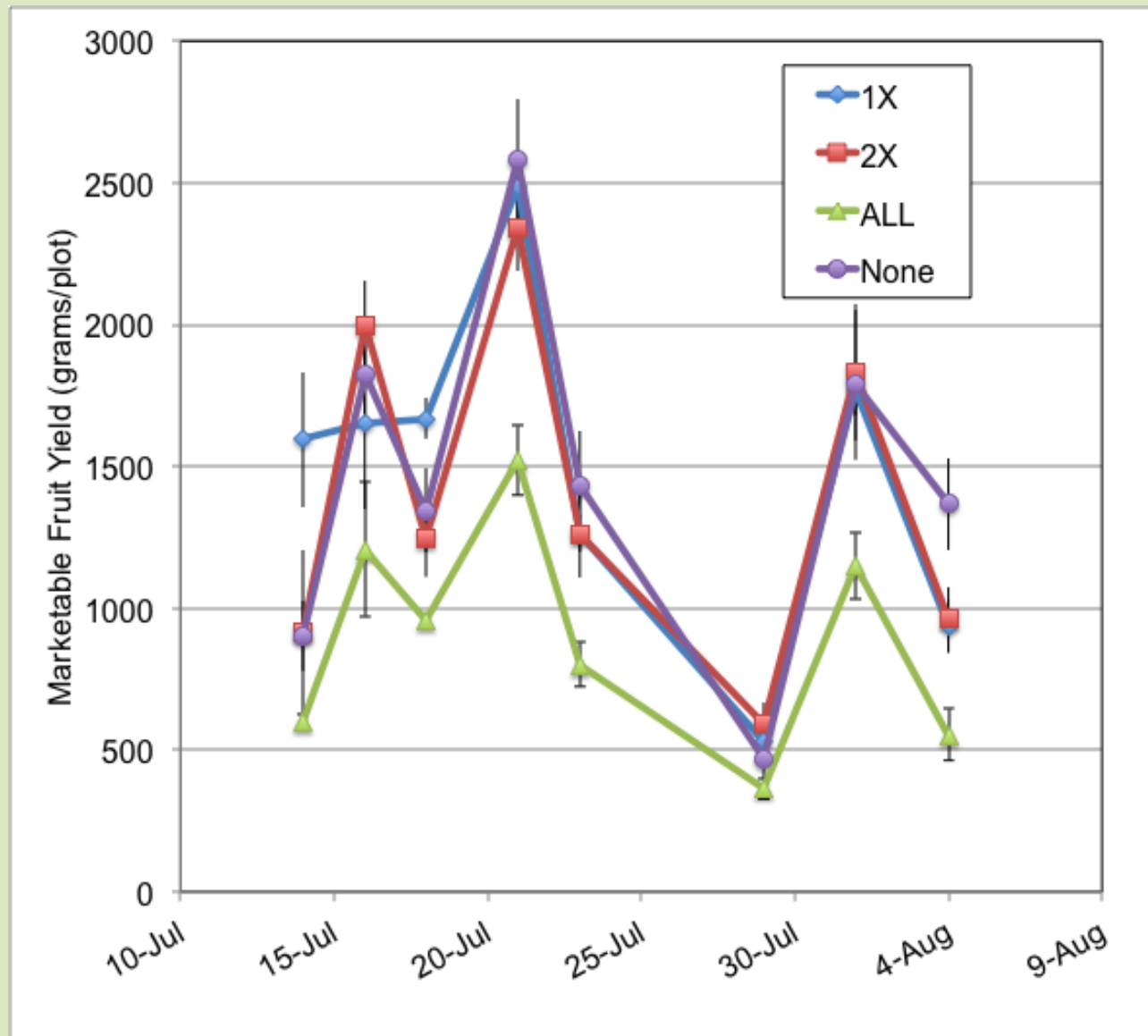




## *Primocane vegetative growth thinning trial*

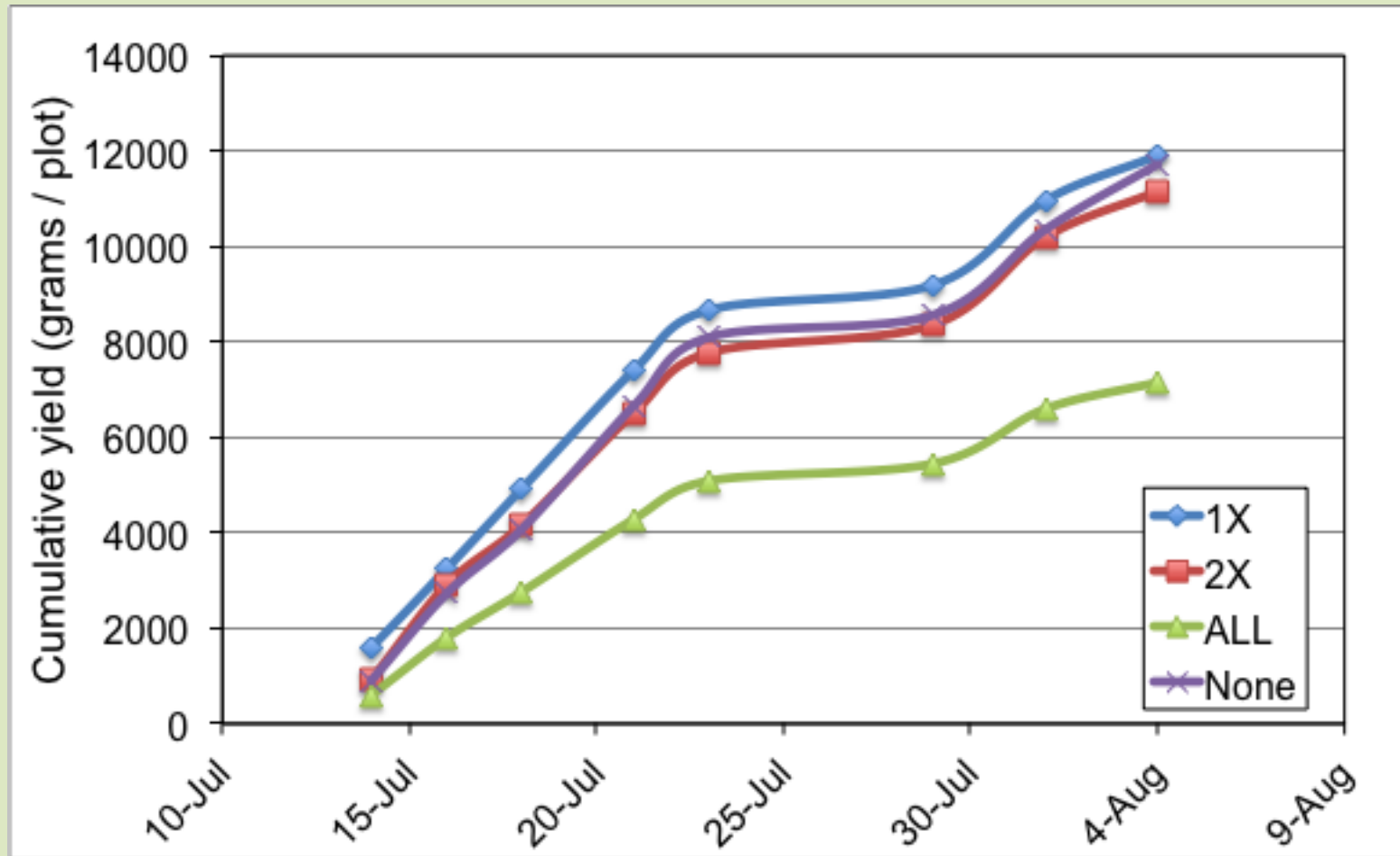


## *Primocane vegetative growth thinning trial*

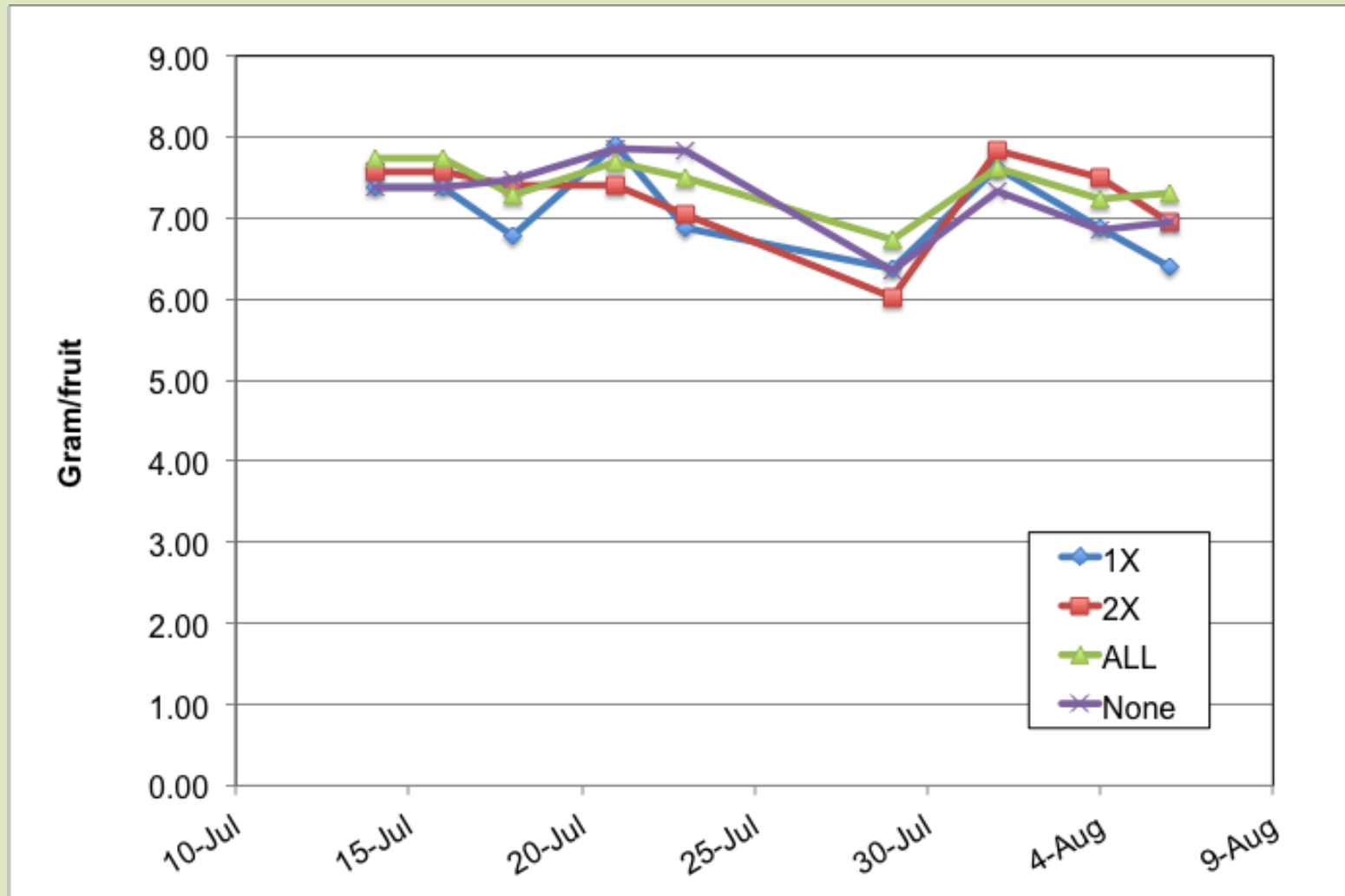




## *Primocane vegetative growth thinning trial*



## *Primocane vegetative growth thinning trial*





## *Questions for future trials*

### *Florican pruning of Primeark?*

- *Does elimination of foliage with mow-down affect redberry mite?*
- *Is traditional redberry control with oils adequate enough to take advantage of earlier harvest resulting from florican pruning?*
- *Risk of redberry infestation*

### *In-season pruning?*

- *What about late season pruning?*
  - *will August cut back to 3 ft increase October production?*

### *Effects of tunnels, heating?*

- *Put up plastic as late as possible to minimize vegetative growth, reduce fruiting height?*



# *Pruning and thinning Prime-Ark 45 blackberry for extended season production in coastal California*

*Mark Gaskell, Farm Advisor  
UCCE - San Luis Obispo*