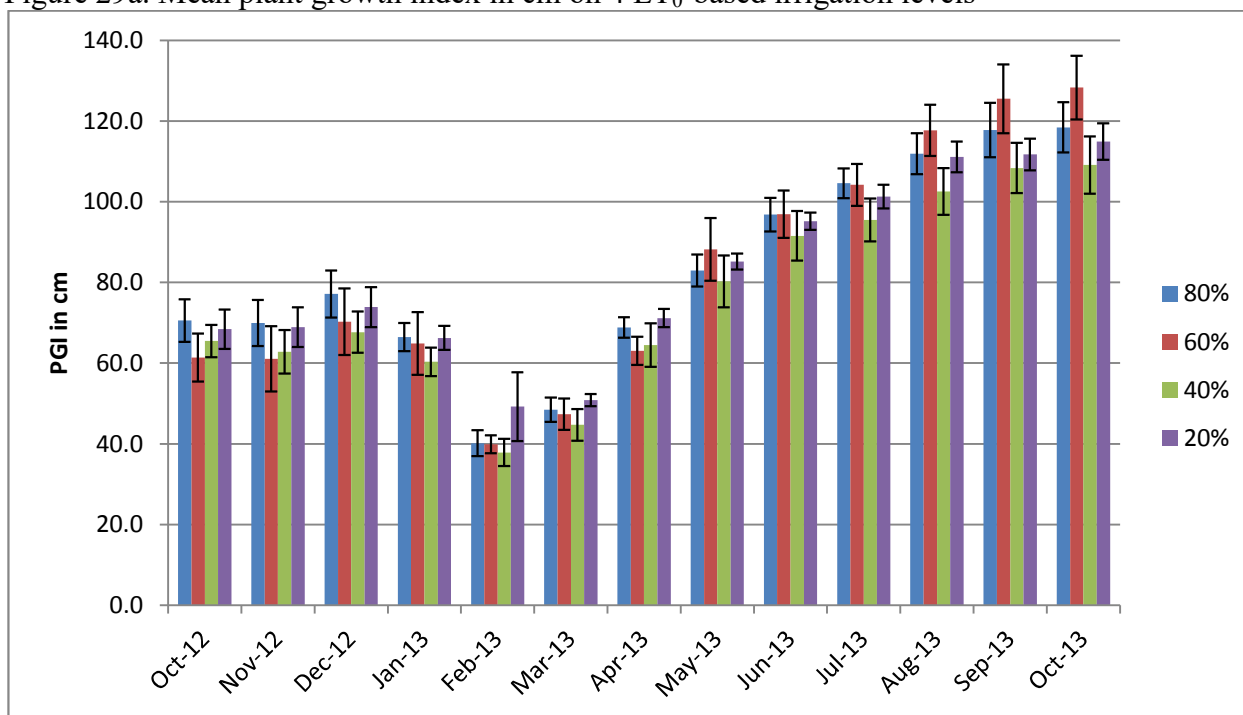


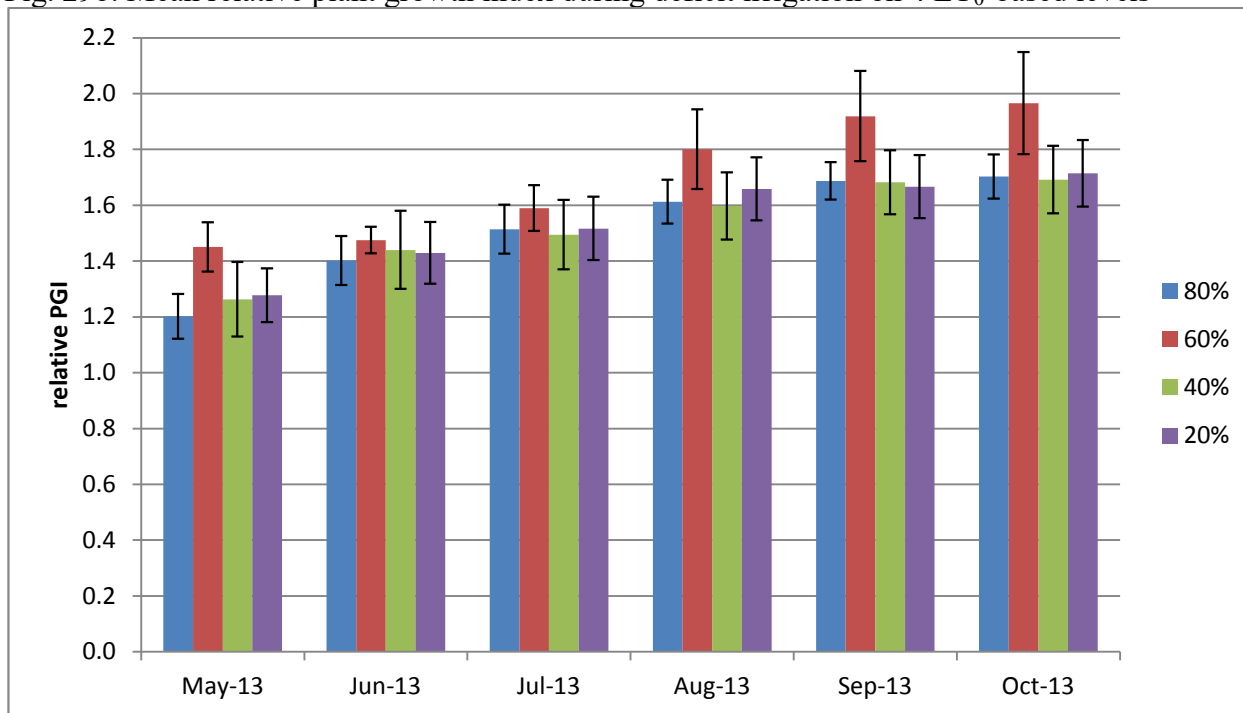
Salvia microphylla 'Hot Lips'

Figure 29a. Mean plant growth index in cm on 4 ET₀-based irrigation levels



Error bars represent \pm 1 SE

Fig. 29b. Mean relative plant growth index during deficit irrigation on 4 ET₀-based levels



Error bars represent \pm 1 SE

Table 22. Mean quality ratings in 6 categories on 4 ET₀-based irrigation levels

<i>Salvia microphylla</i> 'Hot Lips'														
foliage		OCT	DEC	JAN	FEB	MAR	APR	MAY	JUN	JUL	AUG	SEP	OCT	AVG
	80%	3.8	4.5	2.8	3.8	4.2	4.3	4.7	4.5	4.2	3.8	2.8	3.2	3.9
	60%	4.4	4.4	2.6	3.6	5.0	4.2	4.8	4.8	4.5	4.5	4.3	4.5	4.3
	40%	4.3	4.7	2.7	4.0	4.8	4.5	4.7	4.7	4.7	4.3	4.2	3.8	4.3
	20%	4.2	4.2	2.7	4.0	4.3	4.5	4.7	4.2	3.8	4.0	3.5	3.2	3.9
flowering														
	80%	4.5	1.3			2.8	1.8	2.3	5.0	4.8	5.0	4.0	1.8	3.4
	60%	4.4	1.5			2.8	1.0	2.2	5.0	5.0	5.0	4.5	2.5	3.5
	40%	4.2	1.5			3.0	1.5	2.7	4.8	4.8	4.6	4.8	2.3	3.6
	20%	4.0	1.2			2.0	1.5	3.0	4.5	4.2	4.5	3.8	2.0	3.2
pest tolerance														
	80%	5.0	5.0	5.0	5.0	5.0	5.0	5.0	5.0	5.0	5.0	5.0	5.0	5.0
	60%	5.0	5.0	5.0	5.0	5.0	4.8	5.0	5.0	5.0	5.0	5.0	5.0	5.0
	40%	5.0	5.0	5.0	5.0	5.0	5.0	5.0	5.0	5.0	5.0	5.0	5.0	5.0
	20%	3.5	4.2	4.2	2.7	4.0	4.3	4.5	4.7	4.2	3.8	4.0	3.5	4.0
disease resistance														
	80%	4.2	4.5	5.0	5.0	5.0	4.5	5.0	5.0	5.0	5.0	4.7	4.5	4.8
	60%	4.6	4.6	5.0	5.0	5.0	4.8	5.0	5.0	4.5	5.0	4.8	5.0	4.9
	40%	4.2	4.7	5.0	5.0	5.0	4.8	5.0	5.0	5.0	4.5	5.0	4.8	4.8
	20%	4.5	4.3	5.0	5.0	4.8	4.7	5.0	5.0	5.0	4.3	4.8	5.0	4.8
vigor														
	80%	4.3	4.3	3.7	3.2	4.0	4.8	4.7	4.8	4.7	4.0	3.5	3.7	4.1
	60%	4.2	4.6	2.8	2.8	4.0	4.4	4.4	5.0	5.0	5.0	4.8	4.8	4.3
	40%	4.8	4.7	3.7	3.7	4.7	5.0	5.0	4.8	4.8	4.5	4.8	4.7	4.6
	20%	4.0	4.0	2.8	2.8	3.3	4.0	4.3	3.8	4.0	4.0	4.0	3.5	3.7
overall appearance														
	80%	4.3	3.8	2.2	3.1	4.0	3.8	3.8	4.8	4.5	4.3	3.2	2.8	3.7
	60%	4.4	3.7	1.7	2.8	4.4	4.0	4.0	5.0	4.8	4.8	4.4	3.9	4.0
	40%	4.5	3.8	2.2	3.0	4.6	4.0	4.4	4.8	4.6	4.4	4.4	3.4	4.0
	20%	4.3	3.7	1.8	2.8	3.7	3.6	3.9	4.0	4.2	4.2	3.8	3.0	3.6