

Disaster Preparedness Exercise

Overview:

Wildfires and other natural disasters are part of history. This exercise is focused on disaster preparedness utilizing a wildfire scenario to prepare students to think about their own disaster plan, and challenges for evacuating when you have pets and livestock. This exercise is designed as a group activity to promote collaboration, critical thinking, and prioritization.

Supplies: Markers and poster papers (flip charts)

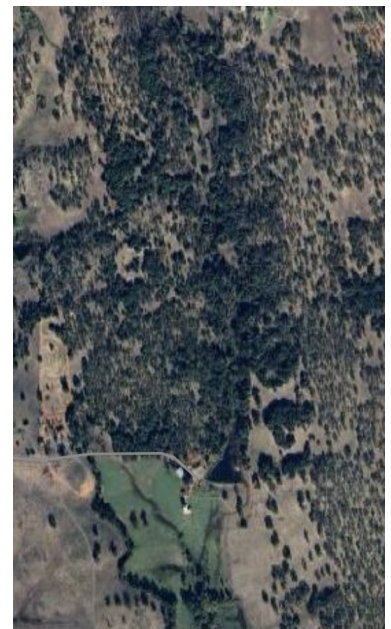
Instructions: Break class into small groups (3-5 students). Share scenario and challenge groups to create a plan of action for their ranch. Use paper and markers to describe the plan. Depending on class time length, it is suggested to give students about 10 minutes to discuss and plan, then knock on the door as a fire fighter and let them know they need to be out in 5 minutes. Thus, giving them only 5 more minutes for their plan. At the end of the allotted time, have students present to the class. Use the discussion guide below to expand learning topics during and critical take aways for disaster preparedness in between presentations.

Scenario:

- Hear lots of sirens when you are outside working on your ranch
- Look up on social media and see a fire started about ½ mile away
- 10 am in August
- Breeze 5 mph blowing smoke toward your ranch
- Landscape in the area is oak woodlands, ranchettes, mix of grazed and ungrazed pasture.
- What are you going to do on your ranch?

Ranch Details:

- 3 Horses
- Barn with tack and hay
- 45 head of cattle
- Location: Butte County
- 150 acres of oak woodlands
- 5 acres of riparian area and irrigated pasture
- House and room with ranch office
- 1 pick up with gooseneck hitch and gooseneck trailer 18 ft long
- 1 mid size SUV
- You and 1 other (e.g. coworker, spouse, friend, roommate)



Discussion Topics –

- Business Documents
- Pictures for insurance to document losses
- Irrigated pasture
- How many animals can really fit in a trailer?
- The risk of letting animals loose and causing wrecks with people evacuating or emergency service providers.
- Is ranch landscape prepared for fire? Do you have disced fire breaks? Is vegetation clear around homes and structures? Are ladder fuels under trees suppressed?
- Importance of having a disaster plan no matter if you have livestock, pets, or just a ranch residence.
- Importance of signing up for emergency alerts, not everyone will get a knock at the door to evacuate. Discuss where else you can get information on fires (INCI web, social media, radio, etc)

Examples from exercise during previous lectures:

