

Fresno County 4-H Fair



Entry Information and Show Rules for Still Exhibits 2026

**FRESNO COUNTY 4-H FAIR
ENTRY RULES AND INFORMATION
TABLE OF CONTENTS**

General Rules for Still Exhibits	3
Judging Rules and Awards.....	4
Food / Baking – Department 1001.....	5
Food Preservation – Department 1002.....	5
Clothing & Textiles – Department 1003.....	5-6
Cotton Contest – Department 1004.....	6
Fashion Revue \$50 Challenge- Department 1005	6
Hand-worked Crocheting, Knitting, Stitchery – Department 1006.....	6
Home Arts and Furnishing - Department 1007.....	6-7
Creative Arts and Crafts – Department 1008.....	7
Fine Arts – Department 1009.....	7
Ceramics / Hydrocal – Department 1010.....	7
Leathercraft – Department 1011.....	7-8
Photography – Department 1012.....	8
Electricity/Electronics – Department 1013.....	9
Small Engines & Tractors – Department 1014	9
Woodworking – Department 1015.....	9
Entomology/Bees & Honey – Department 1016.....	9
Agricultural Horticulture – Department 1017.....	10
Ornamental Horticulture – Department 1018.....	11
Rocketry, Aerospace & Airplanes – Department 1019.....	12
Models – Department 1020.....	12
Beginning 4-H Projects – Department 1021.....	12
Primary Members – Department 1022.....	12
Camping & Outdoor Adventures – Department 1023.....	13
Computers – Department 1024	13
Special Considerations – Department 1025.....	13
Miscellaneous / All Others– Department 1026.....	13
Special Open Department 1027.....	14
Clothing.....	14
Poster / Display Boards.....	14
Foods.....	14
Table Setting – Department 1028.....	14

Entry Rules:

STILL EXHIBITS GENERAL RULES

1. Entries in all departments are open only to 4-H members and/or clubs in good standing.
2. A 4-H member may exhibit in a department **ONLY** if they are currently enrolled in that project. NEW this year a Division of "Outside of 4-H" which offers Foods, Crafts, Clothing & Textiles, or Table Settings.
3. **Check-In** of still exhibits is 7:30 am – 8:30 am. **If you are not in line by 8:30 your items will not be accepted or judged.**
4. **Exhibitor is limited to a total of four exhibits in any one department. Each entry must be a different design/item.** For example: Beginning Sewing, four bow-tie ribbons of different Colors are entered, three will be disqualified if same design. The total of four items applies regardless of number of classes offered in the department.
5. **Pre-Registration online required in 2026 See link below.** Each entry item must include an official entry card at check-in. **Exhibits brought without entry cards will not be eligible for judging. All exhibits MUST be delivered during designated times. LATE ENTRIES WILL NOT BE ACCEPTED.**
*****All entries must have Project Leader's signature or parents if "Outside of 4-H" Department*****
Pre-Registration REQUIRED
Use Google form here <https://forms.gle/VAshBjrn4QZjZQCG8>
6. A complete entry card must be securely attached to each item entered. Check Department rules for any special information required. All entries must use the "comments" section of the entry card to explain what has been done by the member OR a recipe or project instructions should be attached to the entry/entry card. **THE EXHIBITOR IS RESPONSIBLE FOR HAVING ENTRY INFORMATION CORRECT.** No exhibitor shall be entitled to an award which has been disallowed as the result of his own error. However, exhibitors with cause are entitled to question the validity of any disallowance. Such exhibitors should inform the county office immediately, in writing, give their name, address, complete description of the entry, and the reason for requesting reconsideration. **Request will not be considered later than seven (7) days after the close of 4-H fair.**
7. *An entry fee of \$2 per exhibit, which will be collected at check-in of items. \$25 per family maximum (regardless of # of youth). Not to include livestock or small animals.*
8. The same exhibit may be entered in only one class and one department and must be a new project made within July of previous year to current date of entry. Current project work only please.
9. School projects are NOT eligible for entry.
10. Absolutely no alcohol. State 4-H Policy prohibits the use or consumption of alcohol at any 4-H activity.

Release Rules:

1. All entries must remain on exhibit until the designated release schedule. **RELEASE WILL OCCUR UPON AWARDS CEREMONY COMPLETION. NO EARLY RELEASES, NO EXCEPTIONS.** Exhibits can be picked up from the official clerk table and must be signed for by the CCL, parent or designated individual. Items not picked up will be available at the 4-H Office following fair.

Waiver Information/Liability Statements

1. 4-H volunteers, members and staff shall not be responsible for accidents or loss that may occur to the exhibits.
2. The following statement applies to participants of the 4-H Fair:
3. 4-H Fair personnel reserve the right to order the removal of any exhibit which is not in the best interest of the fair, which endangers the public, which is objectionable in any way or which has been entered in violation of its rules and regulations.
4. Exhibitors found in violation of rules or in practices unethical or harmful to the 4-H Fair or the 4-H Program itself shall be penalized by all or partial loss of their privileges (such as representation of 4-H

at the District Fair or the following 4-H Fair) as may be deemed appropriate to the circumstances.

JUDGING RULES

1. All divisions of the "4-H Exhibit" Department will be judged under the Danish system. **Danish System:** From a group of like articles (a class), all those that reach a like standard will be designated as first place; all those that fall into the next group will be given a second; and all those that fall below that and are acceptable are designated in third place.
2. No person shall be allowed under any circumstances to interfere with the judge or judges during their adjudications or with the Fair's staff or to offer any criticism of an exhibit or another to the judge. Violators of this rule shall be excluded immediately from the judging area and from competition and be subject to such additional penalties including cancellation of awards as the 4-H Fair Committee shall consider proper. Rule interpretations can be asked for. **JUDGEMENT CANNOT BE QUESTIONED.** Any person attempting to influence the judges in their decision in any manner will forfeit all awards and will be excluded from future Fairs, exhibitions or other 4-H activities.
3. Judges will be expected, whenever possible and reasonable, to give reasons for their decisions, embracing the value and desirable qualifications for the articles and products for which awards are made.
4. The judge may disqualify any exhibit which is not a true representative of the division or class in which it is entered. The judge may disqualify any exhibit not in proper show condition. Entries eliminated under this rule will not be exhibited, neither will awards be made.
5. The judge, department chairperson or 4-H Fair chairperson may award special awards such as rosettes.

AWARDS

1. Awards will be made according to the merits of the exhibit. If without merit, the judge shall make no award under any circumstance. In the Danish System of judging, the quality implications of each color is:

Blue	Excellent - well above average
Red	Good - above average
White	Average - acceptable, usable
No Award	Not acceptable - incomplete, not ready for exhibit
2. **THE JUDGE'S DECISION SHALL BE FINAL.**
3. **PROTESTS:** All protests must be submitted in writing setting forth the grounds for protests.
 - a. Protests against the awards must be filed not later than 4:00 p.m. of the day following that upon which awards were made. (Exception: Any department in which judging is done prior to opening date of Fair, in which case protest must be filed within 24 hours following opening.)
4. Members may enter up to four (4) items per department. Medals will be awarded on the basis of each member's score card by department. One medal per department per exhibitor, maximum. Medals awarded to minimum score of 96 pts on score card. Division may award one medal per exhibitor to all that score a 96 or higher.
5. Still Exhibits will receive ribbons unless they are disqualified. In addition, special Best of Show awards MAY be presented to the best exhibits in each project area. Each department MAY award 1 or more Best of Show rosette.
6. Primary member participants are not eligible for awards but will receive primary participation ribbons.
7. Participants in Special Categories and Outside of 4-H may receive ribbons and/or any special prizes that are noted, including Best-of-Show awards.

DEPARTMENT 1001 – FOODS / BAKING

1. Recipe must be attached to all items or item will be dropped one ribbon and points will be lowered.
2. Exhibits are to be delivered on disposable plates in **clear plastic bags** (self-sealing) covering exhibit to preserve freshness with completed entry tag stapled bag. (Let food items cool before covering.)
3. **All foods that require refrigeration may not be entered and will be disqualified.**
4. Quantities per exhibit: four each of muffins, biscuits, rolls, cookies, pastries, candies and cupcakes. Cakes, pies and breads - 1/4 each. One cup of any other item in plastic bag. Entry will be dropped one ribbon if this rule is not followed.
5. Food will be discarded at the end of the Fair for health considerations.
6. Recipes which **include** a mix or prepared food are acceptable. However, an item made solely from a mix is not acceptable.

DIVISION A: 1st - 2nd year project members
DIVISION B: 3rd - 4th year project members
DIVISION C: 5th year project members and above



DEPARTMENT 1002 - FOOD PRESERVATION

1. Recipe must be attached to all items or items will be dropped one ribbon and points will be lowered.
2. Low acid foods must be canned under pressure.
3. Use standard canning jars and new lids that are specifically designed for canning purposes. **If standard canning jars are not used, the entry will be disqualified and receive no award. NO EXCEPTIONS.**
4. In the case of jams and jellies, preserves and marmalades, standard decorator containers may be used if sealed and of appropriate size. Paraffin is not an acceptable seal for Fair exhibit.
5. Dried exhibits consist of one jar with lid. Minimum quantities required: fruit and vegetable - 1/2 pint; fruit leather: one roll; jerky: six strips.
6. Properly label entries with product, date and method used. **If this procedure is not followed, ENTRY WILL BE MARKED DOWN** (4-H labels are optional.)

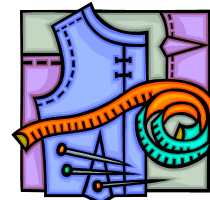
DIVISION A: 1st - 2nd year project members
DIVISION B: 3rd - 4th year project members
DIVISION C: 5th year project members and above



DEPARTMENT 1003 - CLOTHING AND TEXTILES

1. An exhibit in this department is anything sewn: clothing, pillows, stuffed animals, etc.
2. Coordinated exhibits may be entered as single items or as a coordinated set.
3. Only completed and clean articles will be judged. **Soiled or incomplete items will be disqualified and receive no award.** (A note should be attached to stained garments.)
4. All clothes should be entered on hanger; pillows or other items should be placed in a clear plastic bag.
5. Members are limited to one entry per special contest.

DIVISION A: 1st - 2nd year project members
Class 1: Clothing
Class 2: Quilting
Class 3: Pillows, Stuffed animals etc.
DIVISION B: 3rd - 4th year project members



Class 1: Clothing **Class 2:** Quilting
Class 3: Pillows, Stuffed animals etc.

DIVISION C: 5th year project members and above

Class 1: Clothing **Class 2:** Quilting
Class 3: Pillows, Stuffed animals etc.

DEPARTMENT 1004 – COTTON CONTEST

Contest Sponsored: *California Cotton Ginners & Growers Association*

3 cash awards for the purchase of cotton fabrics awarded to top three overall (combined divisions).

1st - \$75, 2nd - \$50, 3rd - \$25

1. The contest is open to any 4-H club member currently enrolled in a clothing & textiles project.
2. Points earned in cotton will count toward total points in Department 1003.
3. **Garments must be minimum of 50% cotton.**
4. All department 1003 clothing rules apply.
5. A member may have only one entry in the cotton contest.

DIVISION F: 1st – 2nd year project members

DIVISION G: 3rd – 4th year project members

DIVISION H: 5th year project member and above

DEPARTMENT 1005 – Fashion Revue \$50 Challenge

1. Participants must shop for an entire outfit not to exceed a total cost of \$50.00 without sales tax.

Must include clothing items and shoes. Accessories are optional as budget allows. Entry card must include information on the occasion for which the outfit was intended (e.g. graduation, formal dance, a day at the beach, etc). Outfits will be judged on appropriateness for the occasion, value for money spent, and overall effect of color, and texture combinations. **All receipts must be submitted at check-in. Must include a photo of the participant wearing the outfit.**

DIVISION A: 9 – 10 years old

DIVISION B: 11 – 13 years old

DIVISION C: 14 years old and above

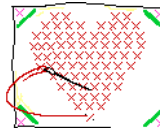
DEPARTMENT 1006 - CROCHETING, KNITTING, MACRAMÉ, STITCHERY

1. Designate on entry tag whether mounting and framing was done by member or done professionally.
2. A pair of socks, mittens, etc. would count as one article. Swatches are not acceptable.

DIVISION A: 1st - 2nd year project members

DIVISION B: 3rd - 4th year project members

DIVISION C: 5th year project members and above



DEPARTMENT 1007 - HOME ARTS AND FURNISHINGS

1. Coordinated exhibits may be entered as single items but should be noted as coordinated project. Coordinated projects will be judged individually and on coordination of colors, texture, patterns and shapes.
2. Any work not done by member (framing, woodworking, wood finishing, etc.) should be noted on the entry tag.
3. Projects done from a kit must be noted on the entry tag.

DIVISION A: 1st - 2nd year project members
DIVISION B: 3rd - 4th year project members
DIVISION C: 5th year project members and above



DEPARTMENT 1008 - CREATIVE CRAFTS

1. Dried arrangements or pots may be entered here (no macramé hangers)
2. Must designate on entry tag any item made from a kit, or if pre-cut, pre-fabricated, etc.
3. Scrapbooking, chip boards and other scrapbook albums can be entered here.



DIVISION A: 1st - 2nd year project members
DIVISION B: 3rd - 4th year project members
DIVISION C: 5th year project members and above



DEPARTMENT 1009 - FINE ARTS

1. Entries must be done as part of a 4-H project.
2. All work must have finished edges and may be displayed using easels, frames or lying flat. (String, yarn, fishing line, tape, glue gun, staples, thumbtacks, etc. are unacceptable) **No exceptions.**
3. Must designate on entry tag, drawing, painting or sculpture and type of material used (i.e. oil, acrylic, water color, charcoal, pencil, (graphite or colored) chalk, pen/ink, metal, wood, clay, plastic, etc.)

DIVISION A: 1st - 2nd year project members
DIVISION B: 3rd - 4th year project members
DIVISION C: 5th year project members and above

DEPARTMENT 1010 - CERAMICS/HYDROCAL

1. Each article must have member's initials and month and year made inscribed on the bottom (or back of a wall plaque) **Before firing.**
2. No plants are to be entered with ceramic articles
3. Note on entry tag type of work (precast, free form, hydrocal, etc.)

DIVISION A: 1st - 2nd year project members
DIVISION B: 3rd - 4th year project members
DIVISION C: 5th year project members and above



DEPARTMENT 1011 - LEATHERCRAFT

1. When displaying two or more small items in this department a sample board is recommended. All items must have entry tag attached securely by string, lace, etc. (Tape can mar the finish.)
2. Items made at any camp may not be exhibited.
3. Designate on entry tag if item is tooled, carved or made from a kit.
4. **Pre-laced items will be disqualified. Any pre-stamped item not embellished by member will also be disqualified.**

DIVISION A: 1st - 2nd year project members

DIVISION B: 3rd - 4th year project members

DIVISION C: 5th year project members and above

DEPARTMENT 1012 - PHOTOGRAPHY

1. Pictures must have been taken by exhibitor within one year of opening day of the fair
*****ALL PHOTOGRAPHS MUST BE MATTED*****

DIVISION A: 1st - 2nd year project members

*****ALL PHOTOGRAPHS MUST BE MATTED*****

- | | |
|----------------|--|
| Class 1 | Five black and white prints "jumbo size" (not over 5" x 7") mounted with rubber cement or dry-mount tissue on mounting board not to exceed 16" x 20". Any combination of the following types of pictures are acceptable: building, pictorial (landscape), people, animals, and still life. |
| Class 2 | Same as above except in color. |
| Class 3 | A minimum of 20 pictures mounted in a regular photo album or on 8 1/2" x 11" pages. Black and white prints or colored prints. |
| Class 4 | Photo Enlargement (8x10) |
| Class 5 | Computer Altered Photographs (no larger than 16x20) |
| Class 6 | Any other |



DIVISION B: 3rd - 4th year project members

*****ALL PHOTOGRAPHS MUST BE MATTED*****

- | | |
|----------------|--|
| Class 1 | Five black and white prints "jumbo size" (not over 5" x 7") mounted with rubber cement or dry-mount tissue on mounting board not to exceed 16" x 20". Any combination of the following types of pictures are acceptable: building, pictorial (landscape), people, animals, and still life. |
| Class 2 | Same as above except in color. |
| Class 3 | Sequence of 2 to 5 photos on any subject, mounted on foam board, not to exceed 16x20 |
| Class 4 | Photo Enlargement (8x10) |
| Class 5 | Computer Altered Photographs (no larger than 16x20) |
| Class 6 | Any other |

DIVISION C: 5th year project members and above

*****ALL PHOTOGRAPHS MUST BE MATTED*****

- | | |
|----------------|---|
| Class 1 | Five black and white prints "jumbo size" (not over 5" x 7") mounted with rubber cement or dry-mount tissue on mounting board not to exceed 16" x 20". |
|----------------|---|

- Any combination of the following types of pictures are acceptable: building, pictorial (landscape), people, animals, and still life.
- Class 2** Same as above except in color.
 - Class 3** Black & White Enlargement 8x10 or larger (not to exceed 16x20).
 - Class 4** Color Enlargement 8x10 or larger (not to exceed 16x20).
 - Class 5** Computer Altered Photographs (not to exceed 16x20)
 - Class 6** Any other

DEPARTMENT 1013 - ELECTRICITY/ELECTRONICS RULES

1. Entries must comply with state safety codes.
2. No batteries exhibited with projects.
3. Kits must be labeled as such.

- DIVISION A:** 1st - 2nd year project members
- DIVISION B:** 3rd - 4th year project members
- DIVISION C:** 5th year project members and above



DEPARTMENT 1014 - SMALL ENGINES - TRACTORS

1. Engines will be started by judge
2. Oil should be in the engine
3. Fuel should **NOT** be in the engine. State type of fuel needed on the entry tag. Fuel will **NOT** be the responsibility of the 4-H member.

- DIVISION A:** 1st - 2nd year project members
- DIVISION B:** 3rd - 4th year project members
- DIVISION C:** 5th year project members and above



DEPARTMENT 1015 - WOODWORKING

1. Indicate on entry tag if item was made from a kit.
2. Indicate on entry tag if power tool was used on project or any other special techniques.

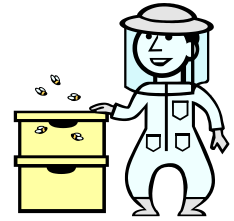
- DIVISION A:** 1st - 2nd year project members
- DIVISION B:** 3rd - 4th year project members
- DIVISION C:** 5th year project members and above

DEPARTMENT 1016 – ENTOMOLOGY / BEES / HONEY

1. At least one collection entry is required. Collection size should correspond with years in project as outlined in the Entomology Project Manual, Leaflet #2949 (available at the 4-H Office).
2. Other entries can include equipment, posters, handbooks prepared by members, etc.

DIVISION A: 1st - 2nd year project members
DIVISION B: 3rd - 4th year project members
DIVISION C: 5th year project members and above
DIVISION D: Bees and Honey

Class 1: 1st - 2nd year project members
Class 2: 3rd - 4th year project members
Class 3: 5th year project members and above



1. Suggested items to enter include: honey samples, pollen, poster, combs, frames, boxes, etc.
2. Indicate on entry tag when item is made from a kit.
3. Honey should be a 2 lb. sample in a sealed jar and labeled as to type.

DEPARTMENT 1017 - AGRICULTURAL HORTICULTURE

1. Entry tag must list the type and variety of each entry. Please print or type clearly.
2. As much as possible display items according to instructions in 4-H manual #6030, (*available through 4-H Catalog*) *How to Prepare Vegetables for 4-H Exhibits* (Example: two cabbages, five tomatoes, etc.)
3. Variety of products must be adequately and correctly labeled.
4. Raisins should be washed and de-stemmed.

PLATE DISPLAYS

DIVISION A: Fruit and Pod Vegetables

Class 1. Beans, any variety
Class 2. Tomatoes, any variety

Class 3. Peppers, any variety
Class 4. Any other

DIVISION B: Root, Bulb and Tuber Vegetables

Class 5. Beets, sugar or red
Class 6. Onions or garlic
Class 7. Any other

Class 8. Carrots
Class 9. Radishes

DIVISION C: Vine Crops

Class 10. Cucumbers, any variety
Class 11. Squash, summer variety
Class 12. Any other variety

Class 13. Melons, any variety
Class 14. Squash or pumpkins, winter

DIVISION D: Leafy and Stem Vegetables

Class 15. Leafy vegetables (except Brassica)
Class 16. Any other

Class 17. Brassica (Cole) leafy vegetables

DIVISION E: DRIED FRUITS

Class 18. Raisins

19. Any Other

DIVISION F: Nuts

Class 20. Any variety

DIVISION G: MISCELLANEOUS

Class 21. Any other vegetable variety

Class 22. Any other fruit variety

DIVISION H: Cereals (3 inch sheave)

Class 23. Cereal

DIVISION I: Forage Plants (4 inch sheave)

Class 24. Forage Plants

DIVISION J: Row Crops

Class 25. Row Crops

DIVISION K: Mini Gardens

Class 26. Mini Garden Vegetables

Class 27. Herb Gardens

DIVISION L: Transplants

Class 28. Vegetables

Class 30. Culinary/Medicinal Herbs

Class 29. Trees/Vines

DEPARTMENT 1018 - ORNAMENTAL HORTICULTURE

1. Entry tag must list the variety of each entry. Please print or type clearly.
2. Plant must be **Established** in container at least **three months** prior to Fair date (except terrariums and dish gardens.) This means that plants or cuttings without roots will not be considered.
3. Exhibits must be free of injurious insects or disease and must be maintained in good condition. Diseased plants will be **disqualified**, and no award made. Determination of disease or insect injury to be the sole responsibility of the judge.
4. All containers required to exhibit materials will be supplied by the exhibitor and should be of suitable material. (For example, milk cartons and paper cups are not suitable containers.) Pot size should be in proportion to plant size.
5. Containers with a bottom drain must be placed in saucers, aluminum pie pans, coffee can lids or similar items to prevent water damage.
6. No decorative foil or ribbon on containers.
7. Plants must be well-watered before entry to prevent drying out.
8. Entries not in compliance with the above rules and limitations **will be disqualified** and no award made.

DIVISION A: Outdoor Plants - (one plant per class in one gallon container, identify)

Class 1. Ground Covers (full size standard nursery flat)

Class 2. Shrubs & Vines

Class 3. Trees

DIVISION B: Outdoor Bedding Plants (in pony packs of 6 to 8 plants)

Class 4. Flower Seedlings

Class 6. Tree Seedlings

Class 5. Rooted cuttings

DIVISION C: House Plants (one plant per class)

Class 7. Flowering Plant

Class 11. Any Other (4" - 10" pot)

Class 8. Foliage Plant

Class 12. Miniature

Class 9. Cactus

Class 13. Patio Plant (12" pot or larger)

Class 10. Succulent

DIVISION D: Outdoor Patio Plant Display

Class 14. Hanging Basket

Class 17. Foliage

Class 15. Succulent
Class 16. Cactus

Class 18. Any Other

DIVISION E: Bonsai (must be in possession of exhibitor six months)

Class 19. Bonsai (single specimen)

Class 20. Bonsai (multiple groves, 1 variety)

DIVISION F: Multiple Plants (must be growing material of 3 or more different varieties of plants. (Overall measurement not to exceed 24" across.)

Class 21. Terrarium

Class 24. Cactus

Class 22. Foliage

Class 25. Cactus & Succulents Mixed

Class 23. Succulent

Class 26. Any Other

DIVISION G: Cut Flowers/Floral Arrangement (enter by number of blooms per entry - buds do not count, flowers may be purchased)

Class 27. 1 – 3 blooms

Class 28. 4 – 7 blooms

Class 29. 8 blooms or more

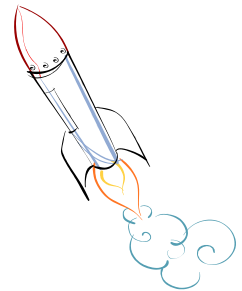
DEPARTMENT 1019 - ROCKETRY, AEROSPACE – AIRPLANES

1. Rocket engines must be removed and not exhibited with rocket due to fire hazard.
2. Suggestion: sand fins well; decals will be judged as part of the paint job and overall appearance.
3. Remote control entries should have no fuel in tank. Disqualification if not followed due to fire hazard.
4. Entry tag must state if made from a kit. Include kit name and model number.

DIVISION A: 1st - 2nd year project members

DIVISION B: 3rd - 4th year project members

DIVISION C: 5th year project members and above



DEPARTMENT 1020 - MODELS

1. Entry tag must state under "comments" type of material used (i.e. metal, plastic, wood, etc.)
2. Please include a photograph of your model.

DIVISION A: 1st - 2nd year project members

Class 1. Model Kits (include kit name and model number)

Class. 2. Self-made models

Class 3. Other (Legos, Tinker Toys, Knex, etc.)

DIVISION B: 3rd - 4th year project members

Class 1. Model Kits (include kit name and model number)

Class 2. Self-made models

Class 3. Other (Legos, Tinker Toys, Knex, etc.)

DIVISION C: 5th year project members and above

Class 1. Model Kits (include kit name and model number)

Class 2. Self-made models

Class 3. Other (Legos, Tinker Toys, Knex, etc.)

DEPARTMENT 1021 - BEGINNING 4-H PROJECTS

1. This department is for members ages 9 and above -who are first year 4-H members. **NOT PRIMARY MEMBERS**
2. All general and department rules must be followed.
3. Do not include batteries with electrical exhibits.

DIVISION E: Beginning 4-H Exhibit

DEPARTMENT 1022 - PRIMARY MEMBERS

1. Primary members are children ages 5 - 8, (as of Dec. 31 previous yr.) enrolled in a 4-H club.
2. **The term "Primary" must be noted on all entries.**
3. All general and department rules apply.
4. **Participant RIBBONS ONLY**

DIVISION P: Primary 4-H Exhibit

DEPARTMENT 1023 - CAMPING & OUTDOOR ADVENTURES

1. Suggested items to enter include: first aid kits, knot displays, shooting sports supplies, traps, hiking kit, etc.
2. Indicate on tag what has been prepared by member.

DIVISION A: 1st - 2nd year project members
DIVISION B: 3rd - 4th year project members
DIVISION C: 5th year project members and above



DEPARTMENT 1024 - COMPUTERS

1. Suggested items to enter include: creative artwork/graphics, business stationery (which could include business cards) web pages, greeting cards, newsletters, etc.
2. Indicate on tag program(s) used and basic steps used.

DIVISION A: 1st - 2nd year project members
DIVISION B: 3rd - 4th year project members
DIVISION C: 5th year project members and above



DEPARTMENT 1025 - SPECIAL CONSIDERATIONS

1. Special Consideration members are children enrolled in 4-H having learning disabilities, challenges, and/or physical limitations.
2. **Division “S” must be labeled on all entry cards.**
3. All general and department rules apply.

DIVISION S: Special Needs 4-H Exhibit

DEPARTMENT 1026 - MISCELLANEOUS PROJECTS / ALL OTHERS

1. This department includes any 4-H project, display or activity which is not listed elsewhere in this entry book. **MUST BE** project work led by adult 4-H Volunteer.
2. Examples: stamp collecting, dog care, camping, biological science, marine science, citizenship, small pets, reptiles, etc.

DIVISION A: 1st - 2nd year project members

DIVISION B: 3rd - 4th year project members

DIVISION C: 5th year project members and above

DEPARTMENT 1027 - SPECIAL “OPEN”

1. Categories below are open to all **REGULAR 4-H MEMBERS** regardless of project enrollment. Entries allowed that were made outside of 4-H. Will not compete against Project Leader led entries. **Not open to Primary members, they must enter Department 1022.**
2. Entries in this department will receive ribbons and any special prizes offered, including Best-Of Show awards.
3. Exhibitor is limited to 4 entries per Department

All Department 1027 use the following Divisions:

DIVISION A: Junior age 9 – 10

DIVISION B: Intermediate age 11 – 13

DIVISION C: Senior age 14 and above

DEPARTMENT 1027-A: Wearable Garments and Fashion Accessories

Class 1. Clothing Item- Any method of decorating or construction is acceptable.

Class 2. Other Textiles- Needlework, crocheting, pillows, quilt, etc.

DEPARTMENT 1027-B: Posters, Project Display Boards

Class 1. General 4-H Theme

Class 2. 4-H Project Theme

DEPARTMENT 1027-C: Foods

Class 1. Baked / Prepared Foods

Class 2. Foods Preservation

Class 3. Decorative / Candies

DEPARTMENT 1027-D: All Other Items (Open or anything not listed above)

Class 1. All Others

DEPARTMENT 1028 – TABLE SETTINGS “OPEN”

1. Open to all **REGULAR 4-H MEMBERS** regardless of project enrollment. **Primaries use Dept.1022**
2. Member must set up own table setting.
2. Completed entry tags must name class and be securely attached to place mat.
3. A space for one place setting and centerpiece will be provided. **Entire table setting is not to exceed a 2 ft. x 2 ft. square.**
4. Centerpiece must be made by exhibitor. It cannot be a purchased or a pre-made centerpiece. Items in arrangement may be purchased or pre-made.
5. Exhibitor must bring place mat, silverware, dishes, napkin, cup, centerpiece, a card with a menu that would be served at this meal. Menu will be judged and must be printed or hand written on a 5 x 7 card. This will count 1/3 of score. Either plan a full meal or plan nutritious snack foods. In both cases select at least one item from each food group in the food pyramid to balance the menu.
6. All possible caution will be taken in displaying entries. Since we cannot be responsible for breakage or theft, **we encourage members not to bring good china or silver.**

Class 1. Picnic

Class 2. Holiday

Class 3. Party

Class 4. Special Occasion

Class 5. All Other

All Department 1028 use the following Divisions:

DIVISION A: Junior age 9 – 10

DIVISION B: Intermediate age 11 – 13

DIVISION C: Senior age 14 and above



University of California

Agriculture and Natural Resources

4-H Youth Development Program