

Update of *Sabal* (Arecaceae) in Cuba

CELIO E. MOYA LÓPEZ AND DONALD R. HODEL

Abstract

Four species of *Sabal* (Arecaceae)—*S. domingensis*, *S. maritima*, *S. palmetto*, and *S. yapa*—occur naturally in Cuba and their distribution variously shared with adjacent countries in the Caribbean basin. In this lavishly illustrated account, we update and discuss their nomenclature and taxonomy—not only for specimens collected on the Island, but also for type specimens from other countries associated with the four Cuban species—and describe their distribution in Cuba.

Resumen

Cuatro especies del género *Sabal* (Arecaceae)—*S. domingensis*, *S. maritima*, *S. palmetto* y *S. yapa*—se encuentran de forma natural en Cuba y la distribución se comparte, en distinta medida, con países adyacentes de la cuenca del Caribe. En este trabajo, profusamente ilustrado, actualizamos y analizamos su nomenclatura y taxonomía—no solo para los especímenes recolectados en la isla, sino también para los especímenes tipo de otros países asociados a estas cuatro especies cubanas—, y describimos su distribución en Cuba.

Introduction

The Arecaceae family, commonly known as palms, is composed of perennial, woody, flowering plants with varying life habits, including shrubs, trees, and vines. About 180 genera and 2,600 species comprise the family worldwide (Dransfield et al. 2008).

Placed in subfamily Coryphoideae, tribe Sabalae, *Sabal* includes 16 species of fan-leaved palms widely distributed from the southern USA through Mexico and central America to Colombia and the Caribbean basin (Dransfield et al. 2008). They range from dwarf to tall or robust, solitary, acaulescent to trunked, unarmed, pleioanthic, hermaphroditic palms. They occur in a variety of habitats, including low swampy areas, coastal sands, and dry, open lands, often on limestone.

Zona (1990) published the latest taxonomic revision of *Sabal* 36 years ago. Dransfield et al. (2008: 57) placed *Sabal* in the Sabaleae tribe of the subfamily Coryphoideae. (POWO 2026) listed 17 accepted species.

The genus *Sabal* has a neotropical distribution. Zona (1990) and POWO (2026) noted that the 17 species of *Sabal* are confined to specific areas: two to the state of Florida in the U.S.A., one to Bermuda, two to the Netherlands Antilles, four to Mexico, one with a wide distribution across the U.S.A., one in Cuba and Jamaica, one in Cuba and Hispaniola, and one to the insular Caribbean. For the four remaining species, the distribution extends across several countries in the Western Hemisphere: one in Mexico, Central America, and northern South America; one in Mexico, the U.S.A., and Central America; one in Cuba, the Bahamas, the Turks and Caicos Islands, and the U.S.A.; and one solely in Cuba, Belize, and southern Mexico.

In Cuba, the Arecaceae comprises 15 genera and 100 infrageneric taxa are reported: 80 species; 10 infraspecific taxa; and 10 hybrids. Of the total, 87 infrageneric taxa are endemic (87 %), one of the highest rates among plant families in the country (Moya 2025d).

Sabal includes four species for Cuba, *Sabal domingensis*, *S. maritima* (**Fig. 1**), *S. palmetto*, and *S. yapa*, variously shared with nearby countries in the Caribbean basin, including the Bahamas, Belize, Dominican Republic, Haiti, Jamaica, and the USA (Zona 1990, 1992). They differ from other all other Cuban fan palms in their flowers with the gynoeceum composed of three carpels connate at the base and with free styles or a common style (Dransfield et al. 2008).

Previously, historic treatments of *Sabal* in Cuba varied considerably, and some modern publications still rely on these. León (1946: 247–248) listed *Sabal florida*, *S. mayarum*, *S. parviflora*, and *S. yapa* in Cuba. Liogier (1969: 25) reported only two species in Cuba, *S. parviflora* and *S. yapa*, with which Muñiz and Borhidi (1982: 334–335) concurred. Since Zona (1990: 632–635, 646–650, 656–657; 1992), the concept of four Cuban species of *Sabal* has been followed although it has been inaccurate in some synonymies for Cuba.

Here, we update the nomenclature, taxonomy, and distribution of the genus *Sabal* in Cuba, not only for specimens collected on the island, but also for type specimens from other countries associated with the four Cuban species.

Materials and Methods

Of the four *Sabal* species reported for Cuba, the protologues, descriptions, types, synonymy, and changes in status were examined, not only for specimens collected in Cuba but also for type specimens from other countries associated the four Cuban species. We link each taxon associated with the four Cuban *Sabal* species to the following references: Walter (1788), Kunth (1816), Schultes & Schultes f. (1830), Sauvalle (1871), Gómez de la Maza (1893), Cook (1901), Beccari (1907, 1908), Standley (1920, 1930), Small (1927), Burret (1929, 1933), Bartlett (1935), Dahlgren



1. Of the four species of *Sabal* indigenous to Cuba, *S. maritima* is likely the most widespread. Here are old, tall specimens in disturbed, seasonally dry forest at Baitiquirí, Guantánamo on the southeastern coast of Cuba.

(1936, 1959), Bailey (1944), Glassman (1972), Zona 1990, 1992), Reveal and Nixon (2013), Stauffer and Stauffer (2017), Moya et al. (2021), and Moya (2025b).

We also reviewed the following references that discuss *Sabal* in Cuba: Humboldt (1827), Fernández (1867), León (1946), Liogier (1969), Bisse (1981), Muñiz and Borhidi (1982), Howard (1988), Borhidi and Muñiz (1986), Cucuini and Nepi (2006), Dransfield et al. (2008), Moya (2025a, 2025c). JSTOR (2026a, 2026b), IPNI (2026), POWO (2026) and Tropicos (2026) provided us with nomenclatural data regarding the scientific names of the genus *Sabal*, and also allowed us to examine herbarium specimens, photographs, and literature.

Because the analysis of the *Sabal* situation in Cuba involves names and collections of the genus from other countries, we grouped the data into three categories: total, total from Cuba, and total from other countries. In total, we examined 488 specimens deposited in 31 herbaria in the following countries: Germany (B, GOET, M), Belgium (BR), Cuba (HAC), Canada (MT), Denmark (C), the United States (A, BH, BRU, CM, F, GA, GH, MICH, MO, NDG, NY, RSA, US, VT), France (P), Italy (FI), the Netherlands (L), the United Kingdom (E, K), Russia (KFTA, LE), Sweden (UPS, S), and Switzerland (G). For Cuba, we examined a total of 321 *Sabal* specimens deposited in 24 herbaria: A, B, BH, BR, BRU, CM, F, FI, G, GH, GOET, HAC, K, L, LE, M, MO, MT, NY, P, RSA, S, US, VT. For other countries we examined a total of 167 *Sabal* specimens in 24 herbaria: A, B, BH, BR, C, E, F, FI, G, GA, GH, K, KFTA, LE, M, MICH, MO, NDG, NY, P, RSA, S, UPS, US. In all cases, acronyms cited are from Thiers (2026).

We reviewed all pertinent material in the National Herbarium of Cuba "Onaney Muñiz" (HAC) of the Cuban Institute of Biodiversity, which co-author Moya López examined in person. For the citation of specimens from HAC, we followed Regalado et al. (2008). Specimens from other herbaria that we cited were all examined from high-resolution photographs. Specimens seen by the authors are marked with "!", those not seen with "[n.v.]," and those without marks were seen as digital images.

We found a total of 336 specimens of Cuban *Sabal*. Of the total, 250 specimens have been identified to the species level; another 71 have been identified to the genus level, and 15 collections from León have not been located. Meanwhile, we found 167 *Sabal* specimens reported from other countries but associated to the Cuban species.

Here we present the types, etymology, and notes pertaining to the Cuban species of *Sabal*.

We discuss the geographic and biogeographic distribution of each species, based mostly on Moya (2025c: 32–34), who provided an update of the geographic and phytogeographic distribution of the four species of *Sabal* reported for Cuba. For geographical distribution, the country is listed in

uppercase, followed by the province or department in parentheses; the biogeographical distribution is listed solely for Cuba according to Borhidi and Muñiz (1986), the province is listed in uppercase, the subprovince and sector in lowercase, followed by the district in parentheses. The origin of the information used for each municipality or district is denoted by adding the superscripts “H” for herbarium specimen, “R” for bibliographic reference, “A” for author field observations, and “P” for personal communications.

Co-author Moya López has maintained field observation records for the last 25 years, where the natural distribution area of the species and the hybrid was verified. His field observation number system is in this format: *Serie Moya XXXX*.

For each taxon, we update the list of validly published accepted names, including the corresponding synonyms. Also, we update information about the assigned type specimen for each name, including notes explaining proposed decisions regarding the original protologue and the original herbarium labels. We also include some additional information about the location and date of collection, as well as data about the barcode of each specimen. We include digital images of herbarium specimens where appropriate.

For typification of the names, we followed the recommendations of the International Code of Nomenclature for algae, fungi and plants (The Madrid code, Turland et al. 2025). We gave special emphasis to articles 9.1 and 9.17 (Turland et al. 2025). A name that is not validly published cannot have a type because it is not a “name” in the sense of the Code (Articles 6.3, 12.1, Turland et al. 2025). The “specified here” marking is used in compliance with article 9.24.

In the specific case of HAC, which currently lacks barcodes, a number is printed on labels or cardstock which, according to Regalado et al. (2000, p 103), “holds no value,” as no catalog recording this entire numbering sequence exists or all specimens within each collection were not individually numbered. Here, the number printed is still cited as being at HAC but is specified by adding “ex” followed by the acronym of the previous herbarium, in accordance with Recommendation 9C.1 (Turland et al. 2025), which advises using “any available number that permanently identifies the specimen.”

Results and Discussion

Considerations regarding the collections of C. Wright, Eggers, Curtiss, and León

Howard (1988: 16) explained that “The numbering system used on the C. Wright Cuban collections as published by Grisebach and later by Sauvalle refers to species, not specimens. A single number, therefore, might refer to a series of specimens, often different taxa, collected at differ-

ent places and dates, often some years apart.” Thus, all of C. Wright’s Cuban palm collections are identified by a species number, not a collector number, and specimens distributed under the same number are not necessarily duplicates. Unfortunately, C. Wright’s numbering system for Cuban palms collections is rarely recognized when designating types, and the vast majority of current publications and herbarium annotations continue incorrectly to designate all specimens of the same number to some type category, perpetuating this misinformation.

Curtiss’s printed labels do not always correspond to reality; in the specific case of *Curtiss 2677*, five different variants were identified. The specimens of *Curtiss 2677* bearing the label designated by Zona (1990: 646) as the neotype, which features the typed text “No. 2677. *Sabal palmetto*. Sandy soil, near Jacksonville, Florida. July,” we emend here as “*Curtiss 2677 p. p. A*”. The remaining specimens, lacking type status, we emend as “p. p. B” for those with “July” crossed out and “Nov.” handwritten in its place; “p. p. C” for those with “Jul., Nov.” handwritten; “p. p. D” for those omitting the month; and “p. p. E” for those omitting “Jacksonville.”

On some labels of the Eggers specimens, the localities or dates do not match. In the case of *Eggers 1678*, the specimens originate from three different localities; here, we emend these as *Eggers 1678 p.p. A* for the Gurabo locality, *Eggers 1678 p.p. B* for Guaina Moca, and *Eggers 1678 p.p. C* for Puerto Plata. A similar situation occurs with *Eggers 4114*, which bears two collection dates; here, we emend these as *Eggers 4141 p.p. A* for the date of February 20, 1888, and *Eggers 4141 p.p. B* for February 18, 1888.

It is widely known that the majority of León’s collections were deposited in the herbarium of the Colegio de La Salle, LS by Thiers (2026), where he conducted his primary research; LS is currently housed at the HAC. León shared his specimens with foreign specialists, affixing labels typed in French or English, and sent them to various herbaria, particularly to collaborators engaged in the study of palms, including Liberty Hyde Bailey (BH), Nathaniel Lord Britton (NY), and Max Burret (B now destroyed) (Moya 2025b: 15); he also sent specimens to P, in his native France. In some instances, his collection numbers do not even correspond with the specimens permanently housed at the HAC. Consequently, it is necessary to examine the collections at BH, P, and other herbaria in order to locate León’s specimens that remain unlocated (see Appendix).

An Updated List of Cuban *Sabal* taxa with their Corresponding Nomenclatural Synonyms, Types, and Distribution

Sabal domingensis Becc., *Webbia* 2: 49. 1907. Type: DOMINICAN REPUBLIC. [Español province], “*S. Domingo a Gurabo, presso Santiago in terreno calcáreo a circa 300 m di altezza*,” 10 May 1887, *Eggers 1678 p. p. A*, **emend. here**, Moya & Hodel. (lectotype,

Glassman 1972: 197, identified here, M0208376 (**Fig. 2**); isolectotypes: B [dest.], F18497 [photo M], FI018886.a ex G [frag.], FI018886.b [draw.], FI018886.c [photo B], K001801-248, KFTA0003389, P00725529).

Syntypes of *Sabal domingensis* Becc.: DOMINICAN REPUBLIC. [Espaillat province], “Savana di Guaina Moca”, n.d., *Eggers 1678 p. p. B*, emend. Beccari (B [dest.]).

Etymology. The epithet “*domingensis*” refers to Santo Domingo, the name then used to refer to Hispaniola, the island where the type specimen was collected.

= *Sabal neglecta* Becc. *Webbia* 2: 40. 1907. Type: [HAITI]. [Ouest département, Port-au-Prince commune] “Latanier, St. Domingue,” May 1827, *Jacquemont 1834* (lectotype, **designated here**, P00725542 (**Fig. 3**); isolectotypes: B [dest.], FI018885.a ex B [frag.]; FI018885.b [draw.], FI018885.c1 [photo B], FI018885.c2 [photo B], GH [photo, n.v.], P00725539, P00725540, P00725541, P00725543).

Etymology. “*Neglecta*” in Latin means ignored, and according to Beccari (1907), it was a sign from the gods that a second species of *Sabal* had been found in St. Domingue, one that Beccari had long forgotten.

Specimens Examined (without type status): **DOMINICAN REPUBLIC.** [Espaillat province], “S.W. von Pto Plata,” 100 m, 26 Apr. 1887, *Eggers 1678 p. p. C*, **emend. here** Moya & Hodel (B180002449 [frag.]). **CUBA. Guantánamo** (Imías), ‘río del Medio, al pie de la Sierra de Imías’, Nov. 1929, *León 14249*, collected by Jesús Pérez (HAC ex LS4885!); ‘orillas del río Imías, pueblo de Imías’, Jan. 1930, *León 14258*, collected by Jesús Pérez (HAC ex LS4872!); ‘región de Imías’, Jun. 1930, *León 14603*, collected by Jesús Pérez (HAC ex LS4886!). Identified by Zona.

Geographical Distribution. **CUBA. Guantánamo** (Imías^H). **DOMINICAN REPUBLIC** (Espaillat, La Vega, Peravia, Santiago). **HAITI** (Artibonite, Port-au-Prince) (Zona 1990).

Biogeographical Distribution. **CUBA.** CUBA province, Eastern Cuba subprovince, Moanicum sector (Puraliense^H).

Notes.

Sabal domingensis

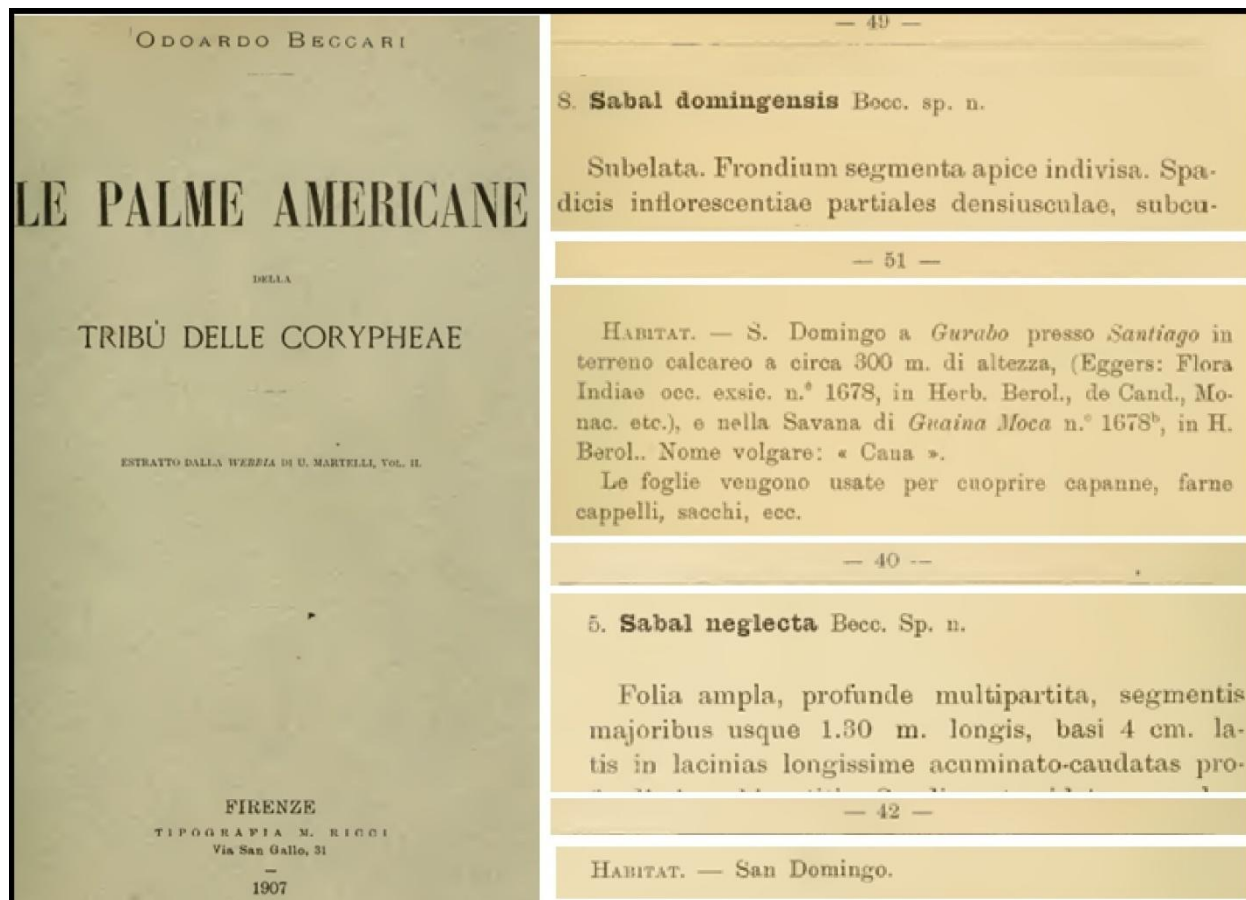
Beccari (1907: 51) (**Fig. 4**) validly published the name *Sabal domingensis*, citing two collections of *Eggers 1678*, one from Gurabo and another from Guaina Moca, both at B. However, he did not designate a type; thus, he created syntypes. For this reason, Glassman (1972: 197) designated



2. Lectotype of *Sabal domingensis*, Eggers 1678 p. p. A, M0208376. © 2026 and courtesy of M.



3. Lectotype of *Sabal neglecta*, Jacquemont 1834, P0072542. © 2026 and courtesy of P.



4. Beccari (1907) validly published *Sabal domingensis* and *S. neglecta*.

the *Eggers 1678* specimen from Gurabo at “B ?” as the type, but that specimen at B is missing, probably destroyed, and he considered *Eggers 1678* from Gurabo as lectotype [first-step]; we amend it as “p. p. A” and designated it as lectotype [second-step]. The syntype from Guaina Moca as “p. p. B” and amended by Beccari was also probably destroyed. The lectotype at M (M0208376) (Fig. 2) also bears a note dated April 1907 by Beccari, with the name.

We do not designate *Eggers 1678* from “S.W. of Puerto Plata, 100 m, 26 Apr. 1887” at B (B180002449) as the type specimen because it was not mentioned in the protologue; thus, here it is considered amended as “p. p. C” as no type.

Bisse (1981: 70), when he described the presence of “*Sabal spec. en los cauces de los ríos y arroyos, en la zona seca de la costa sur de Oriente*” (in the channels of rivers and streams in the dry zone of the southern coast of Oriente), was the first to report the presence of *S. domingensis* in Cuba, which Zona (1992) confirmed.

Sabal neglecta

Beccari (1907: 42) (**Fig. 4**) validly published the name *Sabal neglecta*, citing one collection at B, now destroyed, which had the label “Latanier, S. Domingo. Jacquemont ded. 1827.” Glassman (1972: 200) also listed the *Jacquemont s.n.* collection at B, as the type, and indicated that the species is a synonym of *S. domingensis*. Zona (1990: 628) listed the specimen at B as destroyed and the fragment and photograph in FI as the holotype. Zona’s use of the term “holotype” for this specimen at FI is incorrect, and it should be corrected to lectotype. (See Ex. 13, Article 9.10, Turland et al. 2025). Thus, we designate P00725542 at P as the lectotype).

The original *Jacquemont 1834* label on specimen P00725542 designated as lectotype bears the typewritten inscription “1834 Jacquemont 18” and the handwritten note “27. Mai” (**Fig. 3**). Also, a separate note contains a brief description followed by “Latanier. Port-au Prince. mai 1827.” Specimens P00725539 and P00725543 bear the same original label, whereas P00725540 and P00725541 bear the handwritten inscription “Jacquemont a.1827.” The foregoing demonstrates that the collector number is 1834 and that the specimen was collected in Haiti, not in the Dominican Republic.

Sabal maritima (Kunth) Burret, Repert. Spec. Nov. Regni Veg. 32: 101. 1933. ≡ *Corypha maritima* Kunth, Nov. Gen. Sp. 1: 298. 1816. ≡ *Copernicia maritima* (Kunth) Kunth, Enum. Pl. 3: 244. 1841. Type: CUBA. [Mayabeque province, Batabanó municipality], “Crescit in littore australi Insulae Cubae prope pagum Batabano,” 6–8 Mar. 1801, *Bonpland & Humboldt 1355* (lectotype, [first-step]: Zona 1990: 633, P; lectotype, [second-step]: Stauffer & Stauffer 2017: 18, P00725626 (**Fig. 5**); isolectotypes P00725687, HAC [photo P725626!, F248791 [photo of P, in Dahlgren 1959, plate 366], RSA [photo, n.v.]).

Etymology. The epithet “*maritima*” refers to its coastal habitat. Kunth (1816) wrote, “*Crescit in littore . . .*” (Grows on the shore . . .).

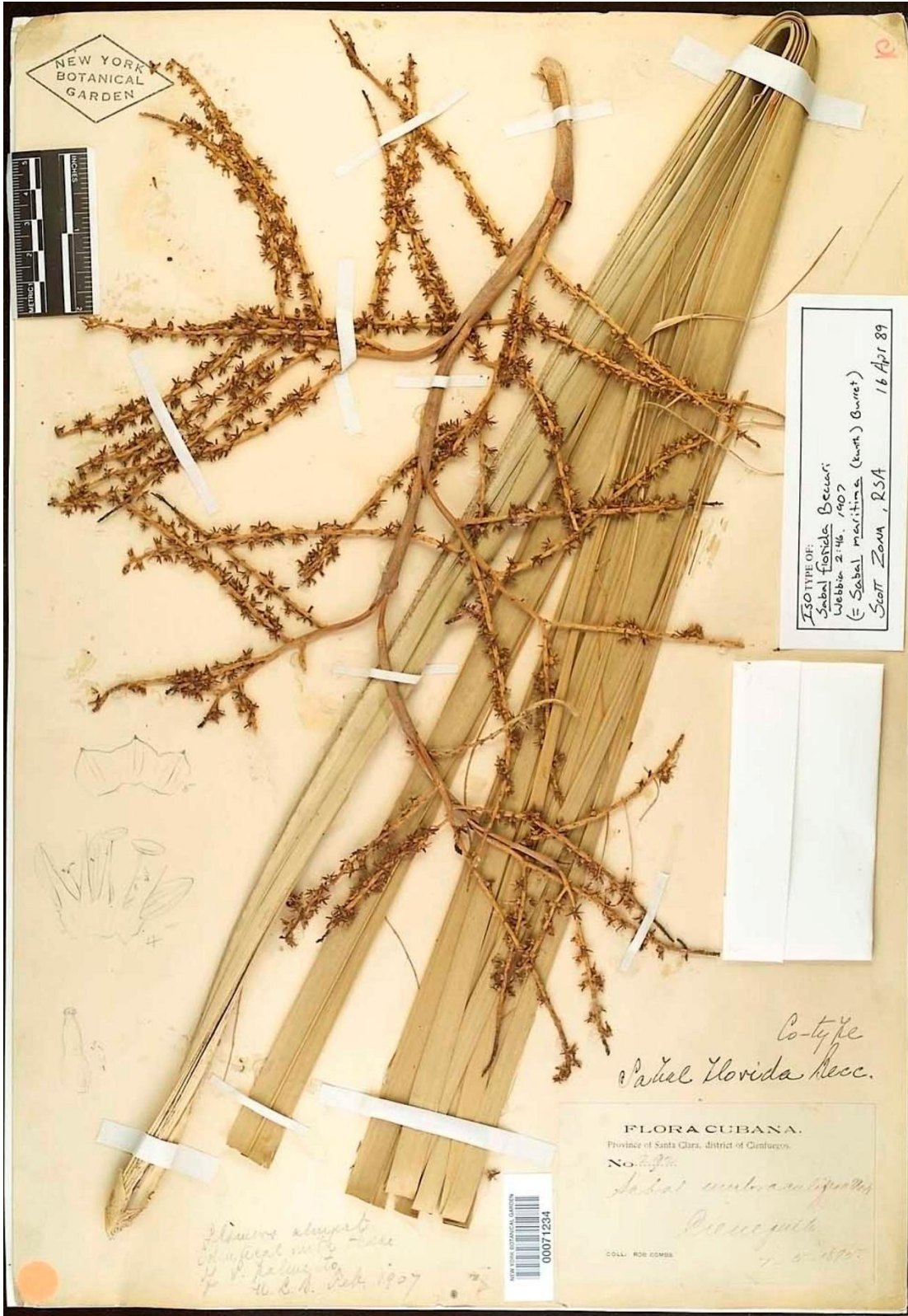
= *Sabal florida* Becc., Webbia 2: 46. 1907. Type: CUBA. [Cienfuegos province, Abreus municipality], “province of Santa Clara, district of Cienfuegos, Cieneguita,” 5 Jul. 1895, *Combs 292* (lectotype: Glassman 1972: 198, NY, identified here, NY00071234 (**Fig. 6**); isolectotypes: B [dest.], FI-frag. & photo [n.v.], GH00028533, GH00028534, MO104589, MO104590, P00725534, P00725535).

Etymology. The epithet “*florida*” refers to the fact that the specimens used in the description were in bloom with open flowers (Beccari 1907).



5. Lectotype of *Sabal maritima*, Bonpland & Humboldt 1355, P00725626.

© 2026 and courtesy of P.



6. Lectotype of *Sabal florida*, Combs 292, NY00071234. © 2026 and courtesy of NY.

= *Sabal jamaicensis* Becc., Repert. Spec. Nov. Regni Veg. 6: 94. 1908. Type: JAMAICA. [Saint Elizabeth Parish], “Pedro Bluff, in insula Jamaica,” 7 Sep. 1906, 457–487 m, *Harris 9736* (lectotype: Glassman 1972: 198, B?, US, identified here, US00087501 (**Fig. 7**); isolectotypes: B [dest.], FI-frag. & photo [n.v.], K001579408, NY00071235, NY00071236, P00725-536).

Etymology. The epithet “*jamaicensis*” refers to Jamaica, the country where the type specimen was collected.

Cuban Specimens Examined (without type status): **CUBA. Artemisa** (Alquízar), ‘sabana de Guanimar’, 11 Jun. 1930, *León 14178* (BH [n.v.], GH [n.v.], US00012194 [n.v.], US00012221 [n.v.]). **Camagüey** (Sierra de Cubitas), ‘savanna N La Gloria’, 11 Feb. 1909, *Shafer 362* (NY1662511, NY1662524, US00012172 [n.v.]); (Camagüey), ‘savannas near Camagüey’, 2–7 Apr. 1912, *Britton, Britton & Cowell 13212* (NY1662523). **Cienfuegos** (Abreus), ‘sabanas Antón Recio’, 30 Jun. 1930, *León 14606* (HAC ex LS4887!). **Holguín** (Calixto García), ‘Mir, sabana de la Cañada del yarey’, 22 Jun. 1932, *León 15536* (GH [n.v.], US00012240 [n.v.], US00012241 [n.v.], US00012285 [n.v.]). **Las Tunas** (Las Tunas), ‘Gamboa’, *Bailey 15158* ([n.v.]). **Matanzas** (Cárdenas), ‘Varadero’, 8 Feb. 1916, *Britton & Wilson 14051* (NY1662515, NY1662519, NY1662520, US00012173 [n.v.], US00012174 [n.v.]). **Mayabeque** (Batabanó), ‘wooded swamps’, *Bailey 12549* (BH [n.v.]); ‘Hacienda Peralta, ciénega de Batabanó’, 5 Sep. 1929, *León 14184* (BH [n.v.], GH [n.v.], HAC ex LS4918!, US00012217 [n.v.], US00012218 [n.v.]); ‘wooded swamps’, *León 13428* (GH [n.v.]); ‘Hacienda Peralta, ciénega de Batabanó’, 11 Jun. 1930, *León 14576* (GH [n.v.], HAC ex LS4914!, US00012247 [n.v.], US00012248 [n.v.]); (Madruga), ‘loma silícea Madruga’, 20 Nov. 1930, *Leon & Regis 14685* (GH [n.v.], HAC ex LS4888!, HAC ex LS4889!, US00012195 [n.v.], US00012196 [n.v.]). **Pinar del Río** (Consolación del Sur), ‘sur de Herradura’, 15 Aug. 1956, *Acuña & Ramos 19961* (HAC ex EEAB!). **Sancti Spíritus** (La Sierpe), ‘potrero Pina, este de Mapos’, 6 Jan. 1932, *León 15446* (HAC ex LS4869!, HAC ex IB!). Unknown municipality, ‘cerca Pico Blanco, La Sierra’, 9 Jul. 1929, *León & Jack 14032* (HAC ex LS!).

Moya field observations: **CUBA. Artemisa** (Alquízar), carretera a Cataluña, 5 Mar. 2019, *Serie Moya 2012*; Los Limpos, 5 Mar. 2019, *Serie Moya 2015*; (Bahía Honda), S Las Pozas, 26 Oct. 2016, *Serie Moya 1693a*; **Camagüey** (Nuevitás) carretera Nuevitás-Camagüey, 5 Sep. 2017, *Serie Moya 1738*; (Sierra de Cubitas): alrededor de La Gloria, 3 Jun. 2017, *Serie Moya 1722* (**Fig. 8**); **Cienfuegos** (Rodas): Muelas Quietas, 24 May 2014, *Serie Moya 1403*; 27 Sep. 2018, *Serie Moya 1812*; **Matanzas** (Matanzas): río Canimar, 19 Jan. 2019, *Serie Moya 1914a*; (Cárdenas): playa Varadero, calle 54, 20 Jan. 2019, *Serie Moya 1914b*. **Sancti Spíritus** (La Sierpe): S Peralejo, 17 Dec. 2016, *Serie Moya 1671*; N Ferrolana, 18 Dec. 2016, *Serie Moya 1684* (**Fig. 9**); (Trinidad): Sabana de Velázquez, 20 Dec. 2016, *Serie Moya 1689*; (Sancti Spíritus): Los Limpios, 30 Aug. 2017, *Serie Moya*



7. Lectotype of *Sabal jamaicensis*, Harris 9736, US00087501. © 2026 and courtesy of US.



8. *Sabal maritima* at La Gloria, Sierra de Cubitas, at Camagüey, 3 Jun. 2017, *Serie Moya 1722*. Note inset of white petioles, which is diagnostic for this species. © 2017 C. E. Moya López.



9. *Sabal maritima* at Ferrolana, La Sierpe, Sancti Spíritus, 18 Dec. 2016, *Serie Moya 1684*. Inset shows densely lepidote petioles, which is diagnostic for this species. © 2016 C. E. Moya López.

1751; (Sancti Spíritus): carretera a Trinidad, 28 May 2014, *Serie Moya* 1420; pasando Banao, 25 Nov. 2016, *Serie Moya* 1668; (Jatibonico) Montesito Barquero, 7 Oct. 2018, *Serie Moya* 1872c (**Fig. 10**); **Isla de la Juventud** municipality: carretera NW Cerro San Juan, Santa Fe, 1 Oct. 2018, *Serie Moya* 1819; carretera Santa Fe, después aeropuerto, 1 Oct. 2018, *Serie Moya* 1825; 1 Oct. 2018, entrada aeropuerto, *Serie Moya* 1830a; carretera Sigüanea, 2 Oct. 2018, después El Tronco, *Serie Moya* 1838; bosque La Cañada, 2 Oct. 2018, *Serie Moya* 1843; finca, carreta Bibijagua, 3 Oct. 2018, *Serie Moya* 1863d; entrada E playa Bibijagua, 3 Oct. 2018, *Serie Moya* 1864a (**Fig. 11**); campismo Bibijagua, 3 Oct. 2018, *Serie Moya* 1866a; a Punta Piedra, 3 Oct. 2018, *Serie Moya* 1868b, sabanas McKinley, 3 Oct. 2018, *Serie Moya* 1869c.

Hodel field observations: CUBA. Camagüey (Esmeralda): Esmeralda, 1 Apr. 2016, *DRH* 9468 (**Fig. 12**); San Francisco de Porcayo, 21.413556, -78.150278, 20 Feb. 2018, *DRH* 0793; **Ciego de Ávila** (Chambas): Falla, 20.155833, -78.753611, 1 Apr. 2016, *DRH* 9526 (**Fig. 13**); Ranchuelo, 22.155833, -78.753611, 18 Feb. 2018, *DRH* 0643; **Cienfuegos** (Aguada de Pasajeros): Aguada de Pasajeros, 22.416944, -80.670000, 8 Apr. 2016, *DRH* 0537 (**Figs. 14–15**); (Rodas) Cartagena, 27 Mar. 2017, *DRH* 2; **Granma** (Niquero): Niquero, Finca Los Naranjos, 20.040556, -77.596111, 31 Mar. 2017, *DRH* 9065 (**Fig. 16**); **Guantánamo** (San Antonio del Sur): Tortuguillas, Yateritas, 19.976389, -74.949167, 29 Mar. 2016, *DRH* 8853; Tortuguillas, El Guanál, 19.975833, -74.946111, 29 Mar. 2016, *DRH* 8864 (**Fig. 17**); Baitiquirí, 20.035278, -74.861667, 5 Apr. 2017, *DRH* 9482 (**Fig. 18**); **Pinar del Río** (Guane): Guane, Finca Naranjo, 22.176389, -83.988611, 25 Mar. 2017, *DRH* 8309 (**Figs. 19–20**); Guane, Finca Vista Hermosa, 22.173333, -83.892500, 31 Mar. 2017, *DRH* 8384; (Pinar del Río), La Barbarita, 22.539722, -83.353889, 4 Apr. 2016, *DRH* 9702; (Viñales) Viñales, Finca El Mogote, 22.652222, -83.713889, 24 Mar. 2017, *DRH* 8296 (**Fig. 21**); **Sancti Spíritus** (La Sierpe): Siete de Noviembre, Romero, 21.601667, -79.308611, 2 Apr. 2016, *DRH* 9627 (**Fig. 22**).

Geographical Distribution. CUBA, JAMAICA (Zona 1990). **JAMAICA** (Hanover, Manchester, Saint Andrew, Saint Elizabeth, and Westmoreland). **CUBA** (distribution is under review). (**Artemisa** (Alquízar^H, Bahía Honda^A), **Camagüey** (Camagüey^A, Sierra de Cubitas^H, Nuevitas^A), **Ciego de Ávila** (Chambas^A), **Cienfuegos** (Aguada de Pasajeros^A, Abreus^H, Rodas^A), **Granma**^{*} (Niquero^{A,*}), **Guantánamo**^{*} (San Antonia del Sur^{A,*}), **Holguín** (Calixto García^H), **Las Tunas** (Las Tunas^H), **Mayabeque** (Batabanó^H, Madruga^H), **Matanzas** (Cárdenas^A, Matanzas^A), **Pinar del Río** (Consolación del Sur^H, Guane^{A,*}, Pinar del Río^{A,*}, Viñales^{A,*}); **Sancti Spíritus** (Jatibonico^A, La Sierpe^H, Sancti Spíritus^A, Trinidad^A), **Villa Clara** (Sagua la Grande^H), and Isla de la Juventud^A municipality. (*Nuevo reporte para Cuba).

Biogeographical Distribution (under review).



10. *Sabal maritima* at Montesito Barquero, Jatibonico, Sancti Spíritus, 7 Oct. 2018, *Serie Moya 1872c*. Inset shows densely lepidote petioles. © 2018 C. E. Moya López.



11. *Sabal maritima* at the east entrance of Playa Bibijagua, Isla de la Juventud, 3 Oct. 2018, *Serie Moya 1864a*. Inset shows densely lepidote petioles. © 2018 C. E. Moya López.



12. *Sabal maritima* at Esmeralda, Camagüey, 1 Apr. 2016, DRH 9468. © 2016 D. R. Hodel.



13. *Sabal maritima* at Falla, Chambas, Ciego de Ávila, 1 Apr. 2016, DRH 9526. © 2016 D. R. Hodel.



14. *Sabal maritima* at Aguada de Pasajeros, 8 Apr. 2016, DRH 0537. © 2016 D. R. Hodel.



15. Lepidote petioles of *Sabal maritima* are diagnostic for the species, here at Aguada de Pasajeros, 8 Apr. 2016, DRH 0537. © 2016 D. R. Hodel.



16. *Sabal maritima* at Finca Los Naranjos, Niquero, Granma, 31 Mar. 2017, DRH 9065. © 2017 D. R. Hodel.



17. *Sabal maritima* at El Guanal, Tortuguillas, San Antonio del Sur, Guantánamo, 29 Mar. 2016, DRH 8864. © 2016 D. R. Hodel.



18. *Sabal maritima* at Baitiquirí, San Antonio del Sur, Guantánamo. Note the lepidote petioles. This specimen is anomalous in that some of its leaf segments appear to be joined well beyond the palman, suggesting *S. mauritiiformis* or *S. yapa*. 5 Apr. 2017, DRH 9484. © 2017 D. R. Hodel.



19. *Sabal maritima* at Finca Naranjo, Pinar del Rio, 25 Mar. 2017, DRH 8309. © 2017 D. R. Hodel.



20. Densely lepidote petioles of *Sabal maritima* are diagnostic for the species, here at Finca Naranjo, Pinar del Rio, 25 Mar. 2017, DRH 8309. © 2017 D. R. Hodel.



21. Leaves of *Sabal maritima* used for roof thatching at Finca El Mogote, Viñales, Pinar del Rio, 24 Mar. 2017, DRH 8296. © 2017 D. R. Hodel.



22. *Sabal maritima* at Romero, Siete de Noviembre, La Sierpe, Sancti Spíritus, 2 Apr. 2016, DRH 9627. © 2016 D. R. Hodel.

Notes.*Sabal maritima*

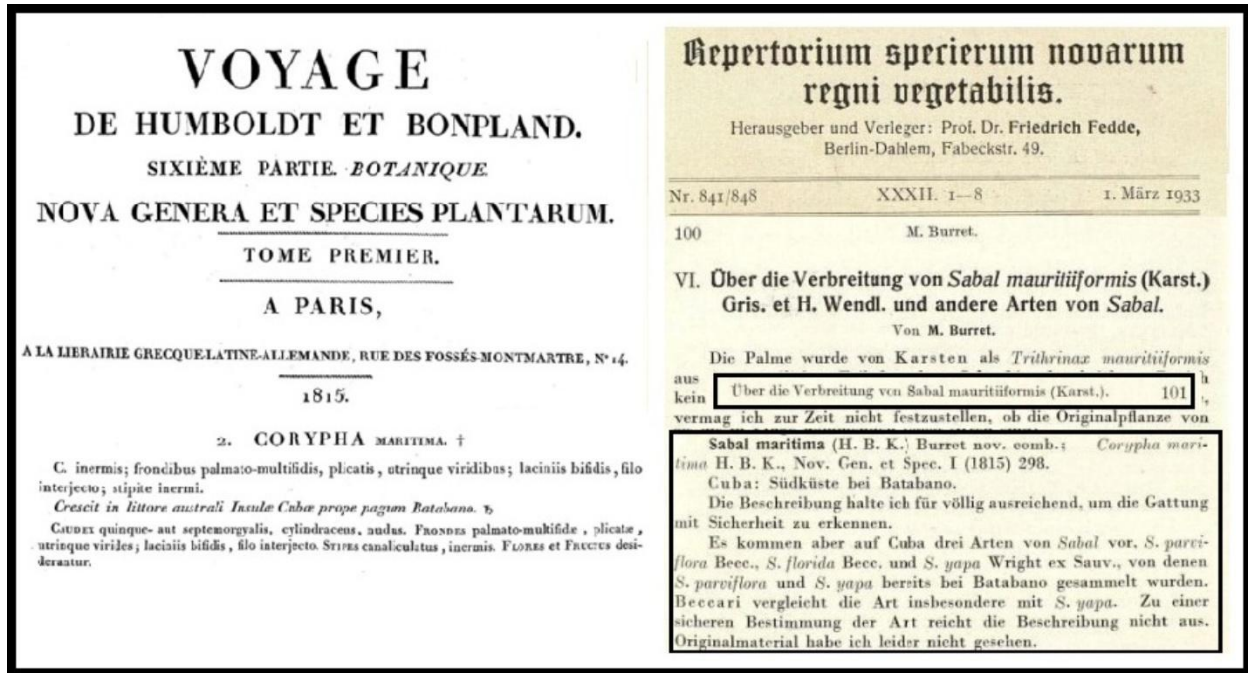
Kunth (1816: 298) (**Fig. 23**) validly published the name *Corypha maritima*, noting it was in: “*Crescit in littore australi Insulae Cubae prope pagum Batabano,*” currently the municipality of Batabanó in the province of Mayabeque, Cuba.

In recounting his 1801 voyage to Cuba, Humboldt (1827) stated that he was in Havana on March 6 where they departed upon the schooner he had chartered. Humboldt (1827: 293) noted that in route they were, “Collecting specimens further south, we found a new palm (see Kunth 1816: 298) with fan-shaped leaves (*coryfa maritima* [*Corypha*]), which possessed a free filament within the interstices of the leaflets,” and that they spent a night in Batabanó. Later, Humboldt (1827: 302) added, “On March 9, before sunrise, we were under sail...” for Trinidad. This information confirms that the collection took place between March 6 and 8. A label bearing the date “March 1801” was attached on a specimen at P.

Burret (1933: 101) (**Fig. 23**) proposed the new combination *Sabal maritima*, derived from *Corypha maritima*. Zona (1990) validated this new combination when he reported the anatomical analysis of the specimen located at P, which he identified as the holotype but without specifying one of the duplicates of that collection; thus, Zona’s designation is considered a first-step lectotypification (Article 9.17, Turland et al. 2025). Stauffer and Stauffer (2017: 18) appear to have made a mistake when they reported that they did not find the *Bonpland & Humboldt 1355* specimen at P-Bonpl; thus, they designated *Bonpland & Humboldt s.n. P725626* as the lectotype, which is considered a second-step lectotypification. However, an annotation (author's name missing) appears on that specimen reading “Bonpland Mars 1801. Havana No. 1355” and “*Corypha maritima*. Batabanó.” This same specimen bears a 1933 label signed by Brother León identifying it as *Sabal* sp. We found another specimen in P with a similar annotation but written by Bonpland and a photograph at HAC of the P type, which here we consider isolectotypes, as are a negative at F of P and the RSA photograph that Zona (1990) designated.

Dahlgren (1959: plate 366) identified the Bonpland & Humboldt collection as *Sabal* sp., showing a photograph of the type specimen at P in a mount earlier than the current one, determined by León at P, with Field Museum negative 37804 (now F248791) (**Fig. 24**).

Our identifications of *Sabal maritima*, including field observations, were based primarily on its densely lepidote petioles, which appear creamy white in the living state. A specimen at Baitiquirí, San Antonio del Sur, Guantánamo is anomalous in that some of its leaf segments appear to be joined well beyond the palman, suggesting *S. mauritiiformis* or *S. yapa* (**Fig. 19**).



23. Left. Kunth (1816: 298) validly published the name *Corypha maritima*. **Right.** Burret (1933: 101) proposed the new combination *Sabal maritima*, derived from *C. maritima*.

Leaves of *Sabal maritima* are often employed for thatching roofs of homes and other buildings in rural areas (**Fig. 21**).

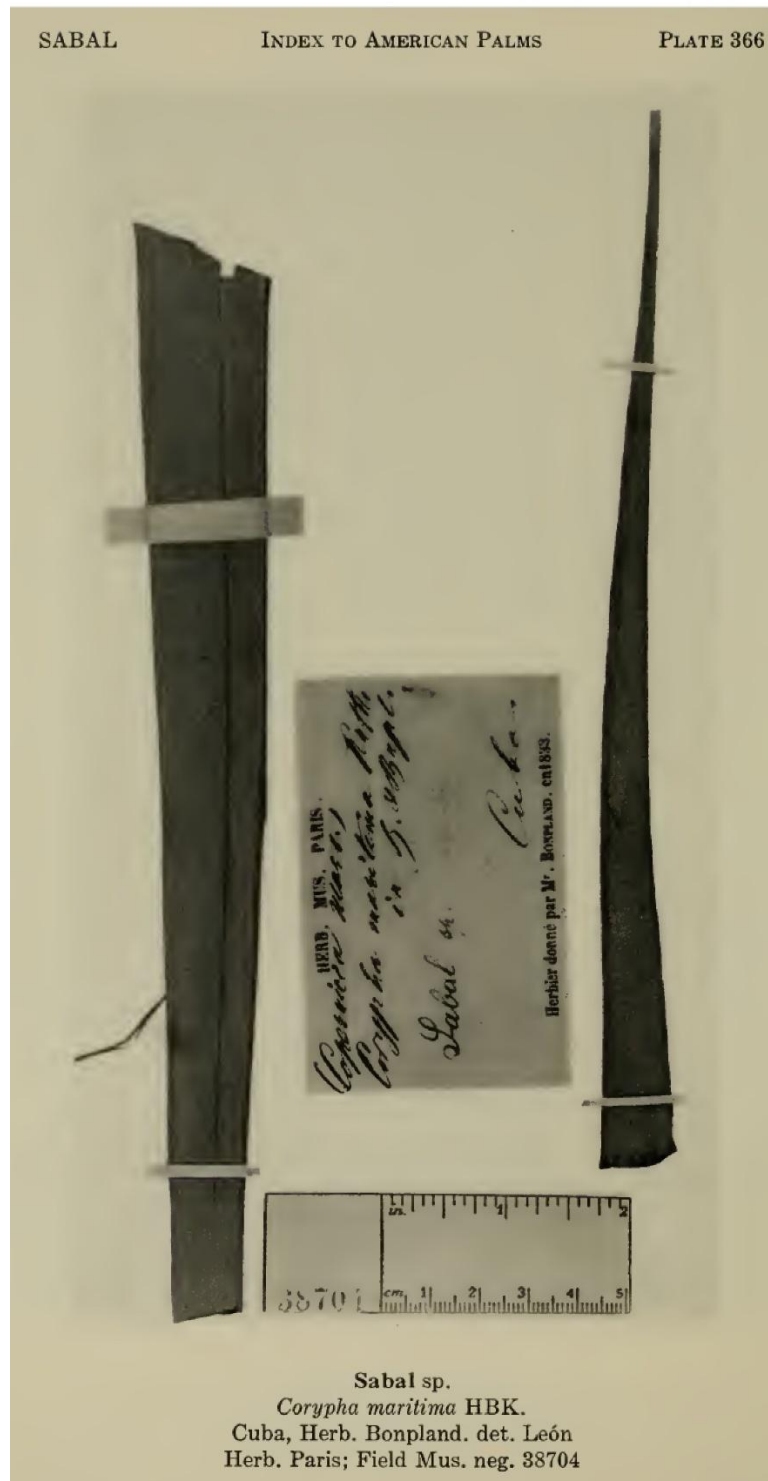
Sabal florida

Beccari (1907: 46) (**Fig. 25**) validly published the name *Sabal florida*, designating as the type specimen *Combs 292* at B, now destroyed, which he used for the description. Therefore, Glassman (1972: 198) designated *Combs 292* in NY as a type, which we identify here as NY00071234 and considered it as a lectotype. Zona (1990: 633) considered *S. florida* a synonym of *S. maritima*.

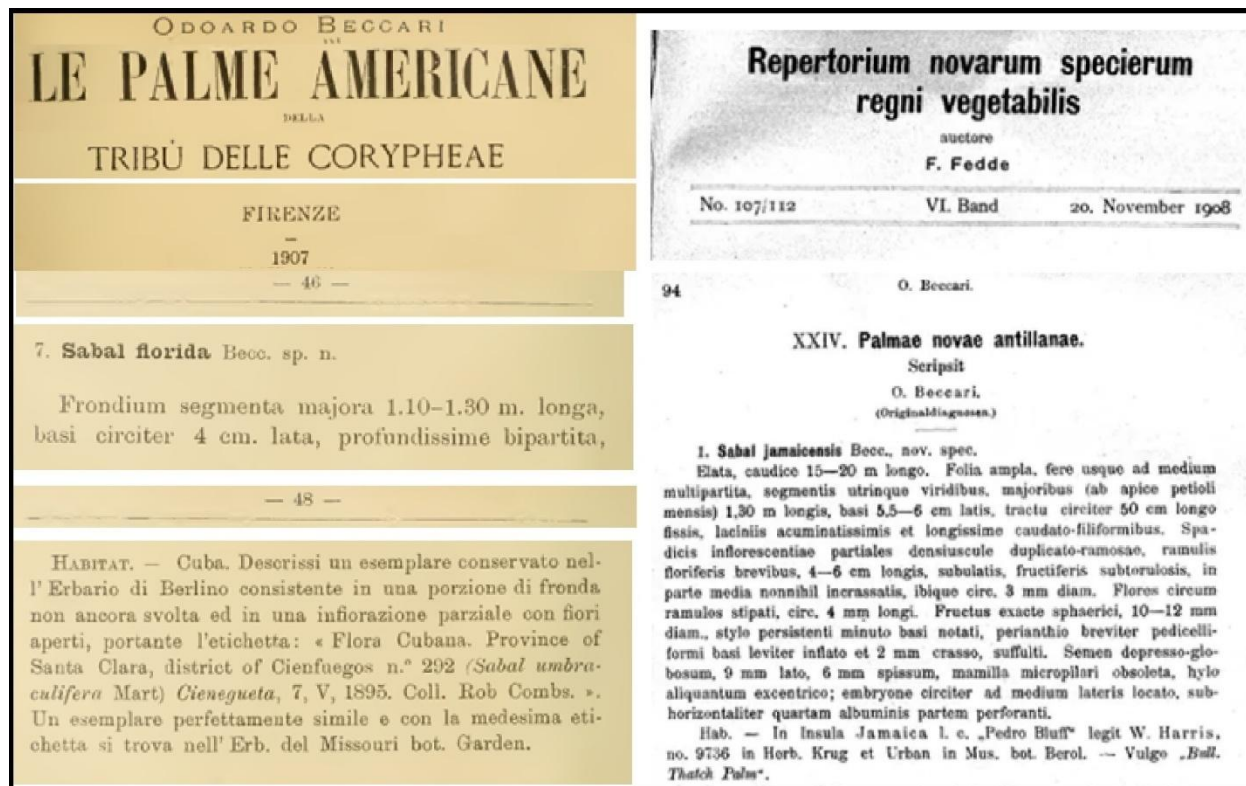
Beccari (1907: 48) listed “Cienegueta [Cieneguita],” as the type locality, currently the municipality of Abreus in the province of Cienfuegos, Cuba.

Sabal jamaicensis

Beccari (1908: 94) (**Fig. 25**) validly published the name *Sabal jamaicensis*, designating *Harris 9736* as the type specimen, collected at Pedro Bluff, Jamaica and deposited at B, now destroyed, which he used for the description. Therefore, Glassman (1972: 198) considered *S. jamaicensis* a valid species and he designated the type specimen of *Harris 9736* at US as an isotype, which we identify



24. Dahlgren (1959: plate 366) identified the Bonpland & Humboldt collection as *Sabal* sp., showing a photograph of the type specimen at P, with Field Museum negative 37804 (now F248791).



25. Left. Beccari (1907: 46) validly published the name *Sabal florida*, designating as the type specimen *Combs 292* at B, now destroyed. **Right.** Beccari (1908: 94) validly published the name *Sabal jamaicensis*, designating *Harris 9736* as the type specimen, deposited at B, now destroyed.

here as US00087501 and consider it as a lectotype. Zona (1990: 633) considered *S. jamaicensis* a synonym of *S. maritima*. The remaining duplicates are considered isolectotypes.

The type locality "Pedro Bluff," is now in the Saint Elizabeth Parish, Jamaica.

Sabal palmetto (Walter) Lodd. ex Schult. & Schult. f., Syst. Veg. 7: 1487. 1830. ≡ *Corypha palmetto* Walter, Fl. Carol.: 119. 1788. ≡ *Chamaerops palmetto* (Walter) Michx., Fl. Bor.-Amer. 1: 206. 1803. ≡ *Inodes palmetto* (Walter) O. F. Cook, Bull. Torrey Bot. Club 28: 532. 1901. [U. S. A.]. Type. USA [Florida state, Duval county], "Florida, near Jacksonville," Jul, *Curtis* 2677 p. p. A, **emend. here** Moya & Hodel (neotype, [first-step], Zona 1990: 646, NY; [second-step], **designated here**: NY00067393 (**Fig. 26**); isoneotypes: A00028536, BR0000035053361, F0075045, G01094305.1, GA259465, GH00028537, KFTA0003385, KFTA003386, MO104591, NDG10179, NDG10180, NY00067392, NY0232-0251, US00016694 [n.v.], US00016740 [n.v.]).



26. Neotype of *Sabal palmetto*, Curtis 2677 p. p. A, NY00067393. © 2026 and courtesy of NY.

Etymology. The epithet “palmetto” is a common name for a fan palm, especially in the southeastern U.S.A. where the species is indigenous.

= *Inodes schwarzii* O. F. Cook, Bull. Torrey Bot. Club 28: 532. 1901 ≡ *Sabal schwarzii* (O. F. Cook) Becc., Webbia 2: 39. 1907. [U. S. A.]. Type. [USA Florida state, ‘Cutter hammock below Miami’, 23 Mar. 1913, Cook O. F. 179 (neotype, **designated here**: US00016785 (**Fig. 27**); isolectotype: US00016762).

Etymology. The plant is named in honor of E. A. Schwarz, who worked for the U. S. Department of Agriculture at the time when he discovered the species (Cook 1901).

= *Sabal palmetto* var. *bahamensis* Becc., Webbia 2: 38. 1907. ≡ *Sabal bahamensis* (Becc.) L. H. Bailey, Gentes Herb. 6: 417. 1944. [Bahamas]. Type: BAHAMAS. [New Providence district], “Bahamas Islands, New Providence, along north side of Lake Killarney,” 3 Mar 1888, Eggers 4360 (lectotype, [first-step], Zona 1990: 646, [first-step], [second-step] **designated here**: M0208393 (**Fig. 28**); isolectotypes: B [dest.], C10024468, F21121 [photo 21121 C [plate 370a!], , NY01263964 p.p. left [photo C..68, mix 4114], RSA [n.v.]].

Syntypes of *Sabal palmetto* var. *bahamensis* Becc.: BAHAMAS. Hog Island, 18 Feb. 1888, Eggers 4097 (C10024469, LE00000798, M0208391, M0208392); 20 Feb. 1888, Eggers 4114 p. p. A, **emend. here** Moya & Hodel (B180002451 [n.v.], C10024470, C10024471, C10024472, C10024473, NY01129387, NY01263964 p. p. right [photo C..72, mix 4360], S06-2462, S06-2463); 18 Feb. 1888, Eggers 4114 p. p. B, **emend. here** Moya & Hodel (F18496 [photo M], M0208389, M0208390).

Etymology. The epithet “*bahamensis*” refers to the Bahamas, the country where the type specimen was collected.

= *Sabal parviflora* Becc., Webbia 2: 43. 1907. Type: CUBA. Location and date unknown, C. Wright 3970 p. p. A, **emend.** Moya (2025a) (lectotype, [first step] Glassman 1972: 200, NY, **designated** Moya 2025a: 37 [second step]: NY00071237) (**Fig. 29**).

Syntypes of *Sabal parviflora* Becc.: CUBA. Location and date unknown, C. Wright 3970 p. p. B (B [destr.], FI [frag. ex B, n.v.]). Mayabeque province, Batabanó municipality, “Batabanó”, 3 Oct. 1904, Baker and Wilson 2308 (B ex ECA [destr.], FI ex B [frag., n.v.], FI ex ECA [photo, n.v.], FI ex ECA [draw., n.v.], HAC ex ECA.1!, HAC ex ECA.2!, NY1662554, US00012151 [n.v.], US00012152 [n.v.]). Isla de la Juventud municipality, “presso Nueva Gerona”, 27 May 1904, Curtiss 484 (A [n.v.], B [destr.], BH [n.v.], CM333350 [n.v.], FI ex A [n.v.], FI ex B [n.v.], GH [n.v.], HAC ex WIP!, L1414527, LE00000799, M0208382, M02083-



27. Neotype of *Inodes schwarzii*, Cook O. F. 179, US00016785. © 2026 and courtesy of US.



28. Lectotype of *Sabal palmetto* var. *bahamensis*, Eggers 4360, M0208393. © 2026 and courtesy of M.



29. Lectotype of *Sabal parviflora*, C. Wright 3970 p. p. A, NY00071237. © 2026 and courtesy of NY.

83, MO104591, NY1662537, NY1662584 [frag.], P [n.v.], US00012252 [n.v.], US00012324 [n.v.], VT115418 p.p. [fl.], VT117060 p.p. [ft.]).

Cuban Specimens Examined (without type status.): **CUBA. Artemisa** (San Cristóbal), Chirigota, *C. Wright 3970 p. p. C* (A00028539). Location and date unknown, *C. Wright 3970 p. p. D* (A00028538, F78939, GH00549117, GH00549118, GH00028540, GH00028541, HAC [photo US87504!], HAC [photo US87505!], HAC ex HABA!, K001287171, NY00071-238, NY00071239, NY00071240, P00725546, P00725548, US00087504, US00087505).

Etymology. The epithet “*parviflora*” comes from the Latin “*parvi*” (small) and “*flora*” (flower), alluding to its “small flowers,” according to Beccari (1907).

= *Sabal jamesiana* Small, J. New York Bot. Gard. 28(332): 182. 1927. Type. USA. [Florida state, Monroe county], “Hammocks, Everglade Keys, Florida,” (holotype, “Figure 1” in Small 1927: 183, identified here) (**Fig. 30**). **Neotype. U.S.A.** (Florida state), ‘Deering Hammock, Dade county’, 26 Aug. 1929, *Small & Mosier s.n.* (neotype, [first-step]. Zona 1990: 646, NY; [second-step], **designated here:** NY02320259 (**Fig. 31**); isoneotypes: NY02320260).

Etymology. The epithet honors Arthur Curtiss James (June 1, 1867 – June 4, 1941), an American patron of botany and horticulture (Small 1927).

= *Sabal viatoris* L. H. Bailey, Gentes Herb. 6: 403. 1944. Type: USA. [California state, Los Angeles county], Cultivated, unknown origin, “tree in cultivation in Huntington Botanical Garden, San Marino,” 18 May 1936, *Bailey 399* (lectotype, [first-step], Reveal and Nixon 2013: 36, BH, [second-step], **designated here:** BH000281616.1 (**Fig. 32**), BH000281616.2, BH000281616.3, BH000281616.4; isolectotypes: BH000281617.1, BH000281617.2, BH000281617.3, BH000281617.4, BH000281617.5, BH000281617.6, BH000281617.7, BH000281617.8, BH000281617.9, Figure 210 in Bailey 1944: 406) (**Fig. 33**).

Etymology. Bailey (1944) named it “*viatoris*,” which in Latin means ‘traveler’.

Specimens Examined. U. S. A. Florida state, Duval county, Florida, near Jacksonville, sandy soil” Jul, *Curtis 2677 p. p. B*, **emend. here** Moya & Hodel (G01094305.2, GH00028535, NY02320268); Jul., Nov., *Curtis 2677 p. p. C*, emend. Moya & Hodel (NY00067394, NY00067395); near Jacksonville [no sandy soil], n.d., *Curtis 2677 p. p. D*, emend. Moya & Hodel (M0208398, MICH1192609); ‘Florida’, locality unknown, Jul., *Curtis 2677 p. p. E*, emend. Moya & Hodel (BR0000035053378, US00016693 [n.v.]).

183

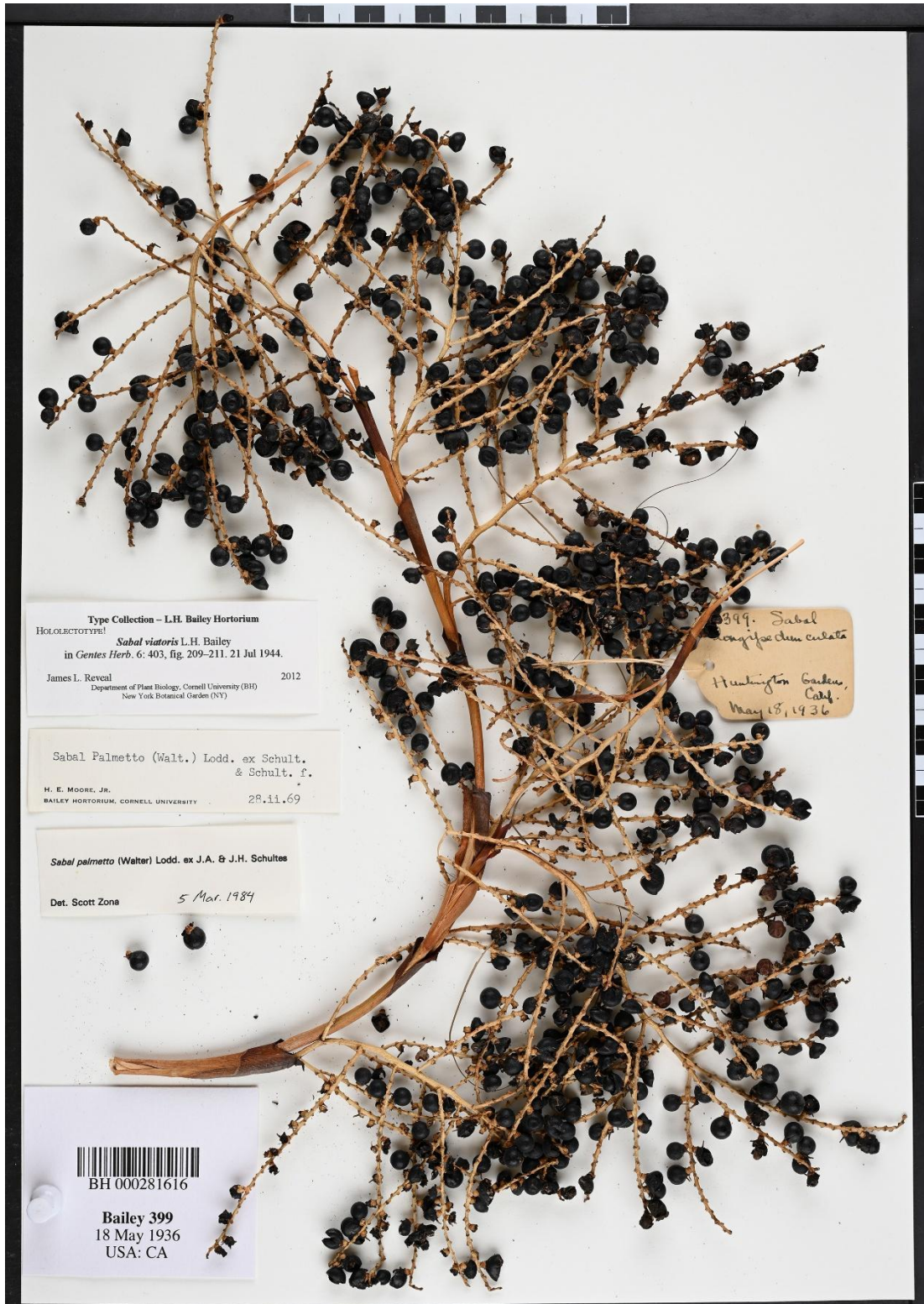


FIGURE 1. In a hammock on the edge of the Everglade Keys west of Kendall, Florida. Plants of *Sabal Jamesiana*, showing the large flat leaf-blades with the very numerous ribs and correspondingly numerous relatively short pliable drooping lobes. By these leaf-characters, the short spadix, and the much depressed fruits, *Sabal Jamesiana* may be distinguished from *Sabal Palmetto*, which also grows in and about this hammock as it does also in the other hammocks where the James Palmetto occurs.

30. Holotype of *Sabal jamesiana*, "Figure 1" in Small (1927: 183).



31. Neotype of *Sabal jamesiana*, Small & Mosier s.n., NY02320259. © 2026 and courtesy of NY.



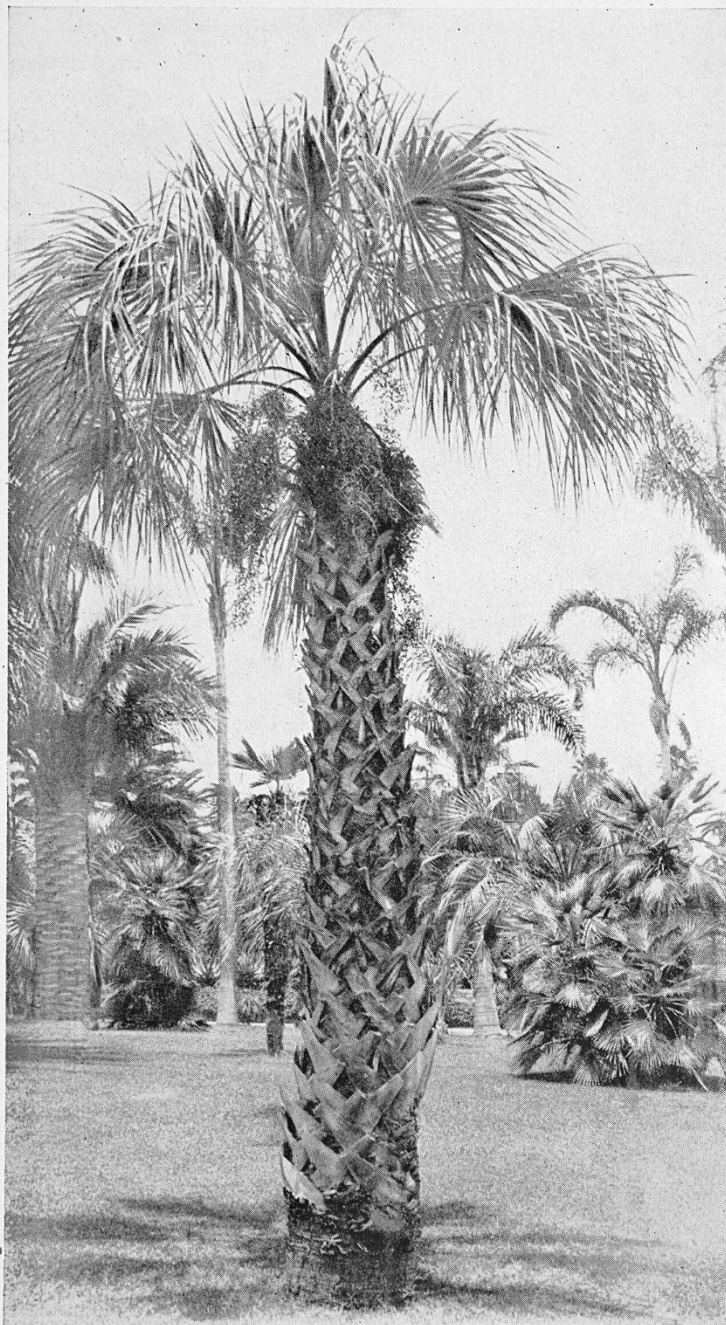
32. One sheet of several of the lectotype of *Sabal viatoris* at BH, Bailey 399, BH000-281616.1. © 2026 and courtesy of BH.

406

GENTES HERBARUM

VOL. VI. FASC. VII, 1944

Tall rather slender tree, 10–23 or 24 m. tall, trunk about 3–4 dm. diameter at maturity, soon self-cleaning and ringed; head open due to the deeply split leaves, long petioles and many drooping segments: leaves



210. *SABAL VIATORIS*, as grown in southern California. Note the deeply divided leaves and the short heavy fruit-clusters.

soft in texture and leaving on the hands a waxy feel when specimens are prepared, grassy in substance (my horse ate part of one leaf), blade 2 m. and more long and broad, shining green above and somewhat bluish but not glaucous underneath, palman short and only 5–8 dm. long; segments 60 and more, upwards of 1 m. long, 6–10 cm. broad at base, midrib and two or more side-ribs very strong so that the part has an almost fluted look, intermediate nerves indistinct, surface faintly cross-hatched with curved lines, filaments lacking or practically so, points very attenuate and slender even to filiform; petiole 1–1.5 m. or more long, vaginate at base; hastula relatively small, acuminate, 6–9 cm. long, margins not broad: inflorescences

33. Isolectotype of *Sabal viatoris* (in addition to several sheets at BH), "Figure 210" in Bailey (1944: 406). © 2026 and courtesy of BH.

Specimens Examined: CUBA. Artemisa (Güira de Melena), N playa de Cajío, 27 Nov. 1930, *León 14702* (GH [n.v.], HAC ex LS4940!, HAC ex LS49401!, S00012242 [n.v.], US00012243 [n.v.]). **Matanzas** (Cárdenas), península Hicacos, 9 Jun. 1931, *Acuña 14901* (BH [n.v.]); (Limonar), month of the Canimar, 23 Mar. 1903, *Britton, Britton & Shafer 567* (CM333359 [n.v.], CM333360 [n.v.], HAC ex NY!, NY1662517, NY1662583). **Mayabeque** (Madruga), Madruga, 23 Mar. 1903, *Britton, Britton & Shafer 782* (CM333361 [n.v.], CM333362 [n.v.], HAC.1 ex NY!, HAC.2 ex NY!, NY1662518, NY1662521); Batabanó (Batabanó), casa Froilan Rigueiro, 11 Jun. 1930, *León 14575* (GH [n.v.], HAC ex LS!, US00012244 [n.v.], US00012245 [n.v.], US00012246 [n.v.]). **Pinar del Río** (Consolación del Sur), *Hermann 857*, by Cucumi & Nepi 2006: 136, (FI [n.v.], HAC ex ECA!). **Sancti Spíritus** (unknown municipality), sur de S. Spíritus, Oct. 1930, *León 14682* (GH [n.v.], HAC ex EEAB!, US00012219 [n.v.], US00012220 [n.v.]). **Isla de la Juventud** municipality, E Nueva Gerona, 7 May 1910, *Jennings 70* (CM333348 [n.v.], CM333349 [n.v.]).

Moya field observations: CUBA. Camagüey (Florida): S Urabao, 1 Nov. 2016, *Serie Moya 1640*; (Sierra de Cubitas): La Sierrita, 3 Jun. 2017, *Serie Moya 1713*; (Nuevitas): camino a Tiffin, 4 Jun. 2017, *Serie Moya 1716*; **Ciego de Ávila** (Majagua): N Campo Hatuey, 25 Jan. 2019, *Serie Moya 1919*; **Cienfuegos** (Abreus): La Pimienta, W Antón Recio, 1 Jun. 2014, *Serie Moya 1427*.

Hodel field observations: CUBA. Camagüey (Esmeralda): Cayo Romano, 21.996111, -77.749722, 19 Feb. 2018; Cayo Romano, 22.001944, -77.688611, 19 Feb. 2018, *DRH 0766* (**Figs. 34–37**); **La Habana** (Habana del Este): Playa Santa María, 23.173889, -82.177222, 26 Mar. 2017, *DRH 8449* (**Fig. 38**).

Geographical Distribution. CUBA, USA, BAHAMAS (Zona 1990). The distribution for Cuba is under review. **CUBA. (Artemisa** (Güira de Melena^H, San Cristóbal^H), **Camagüey** (Esmeralda^{A*}, Florida^A, Nuevitas^A), **Ciego de Ávila** (Majagua^{A*}), **Cienfuegos** (Abreus^A), **La Habana**^{A*} (Habana del Este^{A*}), **Mayabeque** (Batabanó^H, Madruga^H), **Matanzas** (Limonar^H), **Sancti Spíritus** (Sancti Spíritus^A) and Isla de la Juventud^H municipality. (*Nuevo reporte para Cuba).

Biogeographical Distribution (under review).

Notes.

Sabal palmetto

Walter (1788: 119) (**Fig. 39, left**) validly published the name *Corypha palmetto* with a brief description but did not designate the type or use original material. Schult. & Schult. f. (1830: 1487) (**Fig. 39, right**) proposed the new combination *Sabal palmetto*. Then Zona (1990: 646) selected and designated *Curtis 2677* at NY to serve as the neotype (Article 9.8, Turland et al. 2025), without specifying one of the six existing duplicates, thus creating syntypes, which is considered a



34. *Sabal palmetto* at Cayo Romano, Esmeralda, Camagüey, 19 Feb. 2018, DRH 0766. © 2018 D. R. Hodel.



35. While petioles of *Sabal palmetto* can have thin, white-waxy bloom, they are not lepidote, here at Cayo Romano, Esmeralda, Camagüey, 19 Feb. 2018, DRH 0766. © 2018 D. R. Hodel.



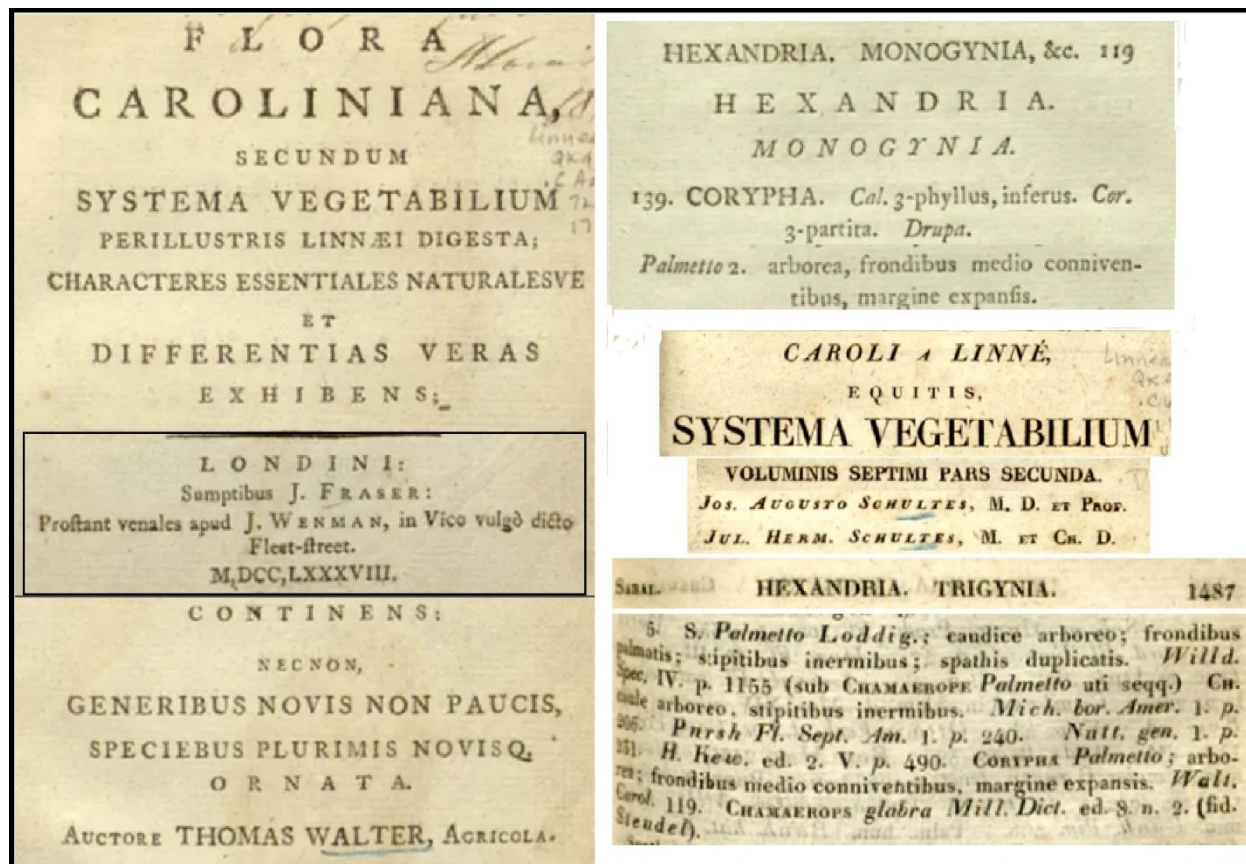
36. Flowers of *Sabal palmetto* are white, here at Cayo Romano, Esmeralda, Camagüey, 19 Feb. 2018, DRH 0766. © 2018 D. R. Hodel.



37. *Sabal palmetto* at Cayo Romano, Esmeralda, Camagüey, 19 Feb. 2018, DRH 0766. © 2018 D. R. Hodel.



38. *Sabal palmetto* at Playa Santa Maria, Habana del Este, La Habana, forming dense thickets near the coast, 26 Mar. 2017, DRH 8449. © 2017 D. R. Hodel.



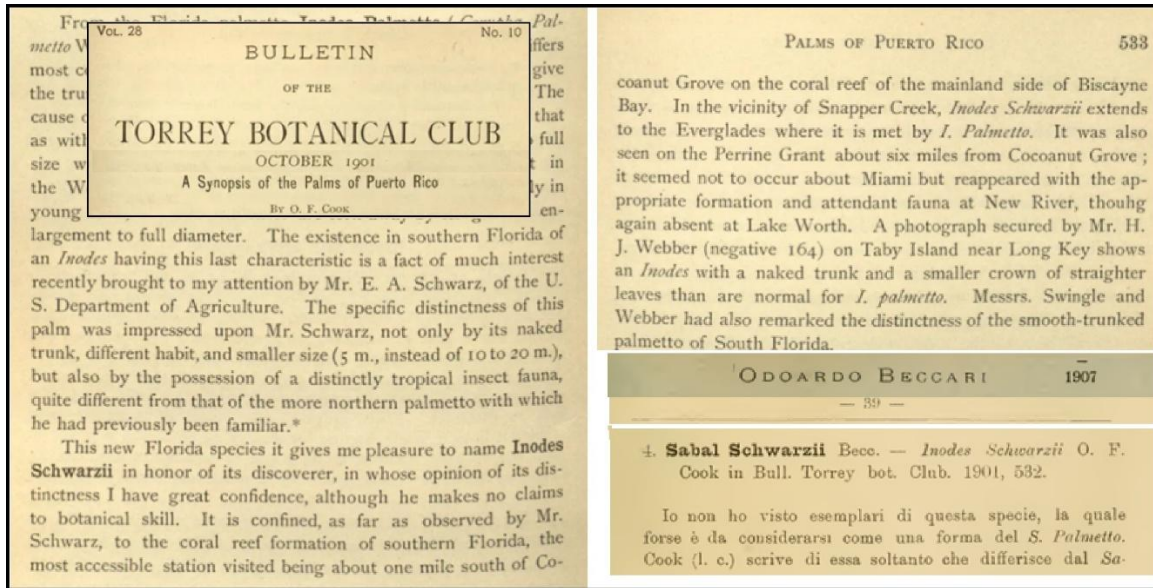
39. (Left) Walter (1788: 119) validly published the name *Corypha palmetto*. (Right) Schult. & Schult. f. (1830: 1487) proposed the new combination *Sabal palmetto*.

first-step neotypification (Article 9.17 Turland et al. 2025). Here, NY00067393 is designated as the second step. The remaining duplicates are isoneotypes.

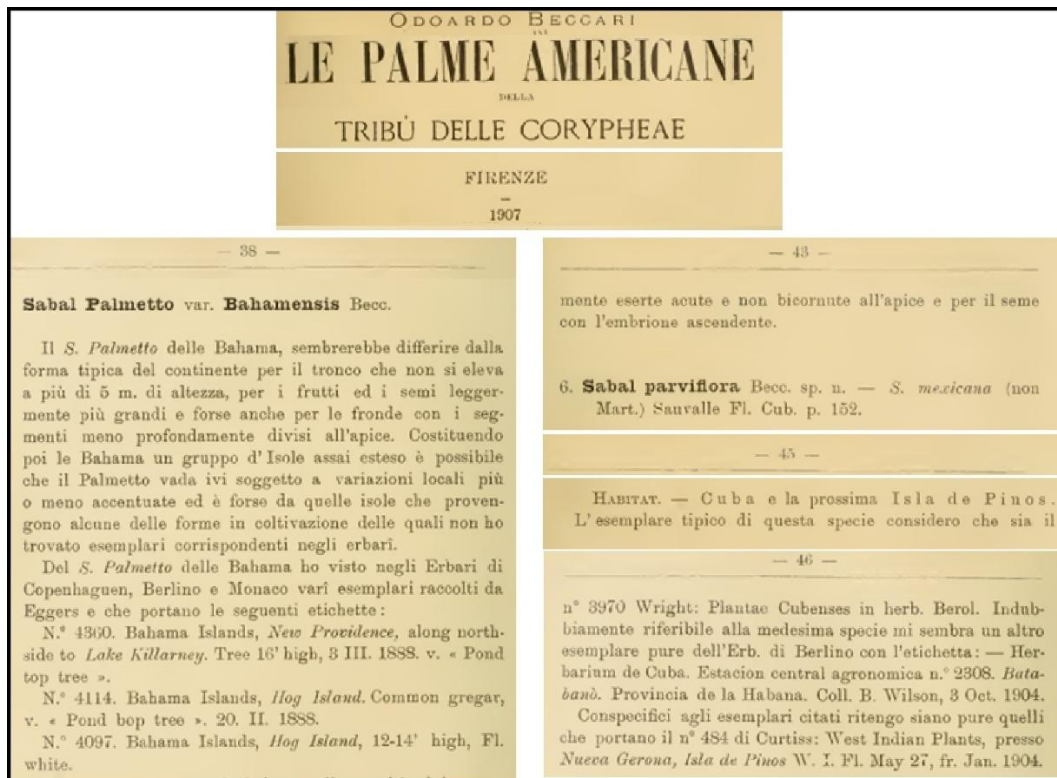
The amendments to *Curtis* 2677 are explained above, wherein only “p. p. A” retains the status of neotype.

Sabal schwarzii

Cook (1901: 532–533) (Fig. 40) validly published the name *Inodes schwarzii*, offering a diagnosis based on observations by Mr. E. A. Schwarz of the U. S. Department of Agriculture. Cook merely mentioned but did not designate a type or original material; therefore, we do not accept *Cook s.n.* as the type proposed by Zona (1990: 646). We hereby designate specimen US00016785 as the neotype of *I. schwarzii* to serve as the nomenclatural type (Article 9.8, Turland et al. 2025).



40. Cook (1901: 532–533) validly published the name *Inodes schwarzii*, offering a diagnosis based on observations by Mr. E. A. Schwarz of the U. S. Department of Agriculture.



41. Left. Beccari (1907: 38) validly published the name *Sabal palmetto* var. *bahamensis*, citing several specimens of Eggers, thus creating syntypes. Right. Beccari (1907: 43) validly published the name *Sabal parviflora*, listing several specimens, thus creating syntypes.

Sabal palmetto var. *bahamensis*

Beccari (1907: 38) (**Fig. 41**) validly published the name *Sabal palmetto* var. *bahamensis*, citing several specimens, including *Eggers 4360* (B), *Eggers 4114* (B and C), and *Eggers 4097*, without naming a type, thus creating syntypes (Article 9.6, Turland et al. 2025).

Dahlgren (1936: 253) indicated that *Sabal palmetto* var. *bahamensis* is a synonym of *S. palmetto* and listed *Eggers 4360* and *4114* as types, thus creating syntypes. Zona (1990: 646) designated *Eggers 4360* at four herbaria (C, F, NY, and RSA) as lectotype, creating syntypes, which is considered a first-step lectotypification (Article 9.17, Turland et al. 2025). Here, we complete the lectotypification (second-step) by designating specimen M0208393, which Beccari annotated the name in April 1907. The remaining duplicates become isolectotypes.

The photo negative of *Eggers 4360* at F of material at C was plate 370a of Dahlgren (1959).

Sabal parviflora

Beccari (1907: 43) (**Fig. 41**) validly published the name *Sabal parviflora*, listing *C. Wright 3970*, Baker & Wilson 2308, and *Curtiis 484* as types, creating syntypes. Glassman (1972: 200) designated *C. Wright 3970* in NY, referring to a complete collection, also creating syntypes. Therefore, Moya (2025a: 37) designated NY00071237 *Wright 3970 p. p. A* as lectotype [second-step], and also noted the syntypes. Here we relate non-types.

Sauvalle (1871) erroneously listed the collection *Wright 3970* for *Sabal mexicana*.

Sabal jamesiana

Small (1927: 182) showing that he validly published the name *Sabal jamesiana*, basing it on Figure 1, page 183 in his account (**Fig. 42**). Zona's (1990) designation of the neotype of *Sabal jamesiana*, collected two years after the species was published, is rejected here (Article 9.19(c), Turland et al. 2025) because it is in serious conflict with the protologue, and is replaced by the presence of original material and the existence of a documented holotype. Zona (1990: 646) selected and designated *Small & Mosier s.n.* at NY to serve as the neotype (Article 9.8, Turland et al. 2025) but without specifying one of the two existing duplicates, which is further narrowed to a single one of these specimens and considered a first-step neotypification (Article 9.17, Turland et al. 2025). Here, NY02320259 is designated as the neotype second step. The other duplicate at NY is an isoneotype.

VOL. XXVIII

AUGUST, 1927

No. 332

JOURNAL
OF
THE NEW YORK BOTANICAL GARDEN

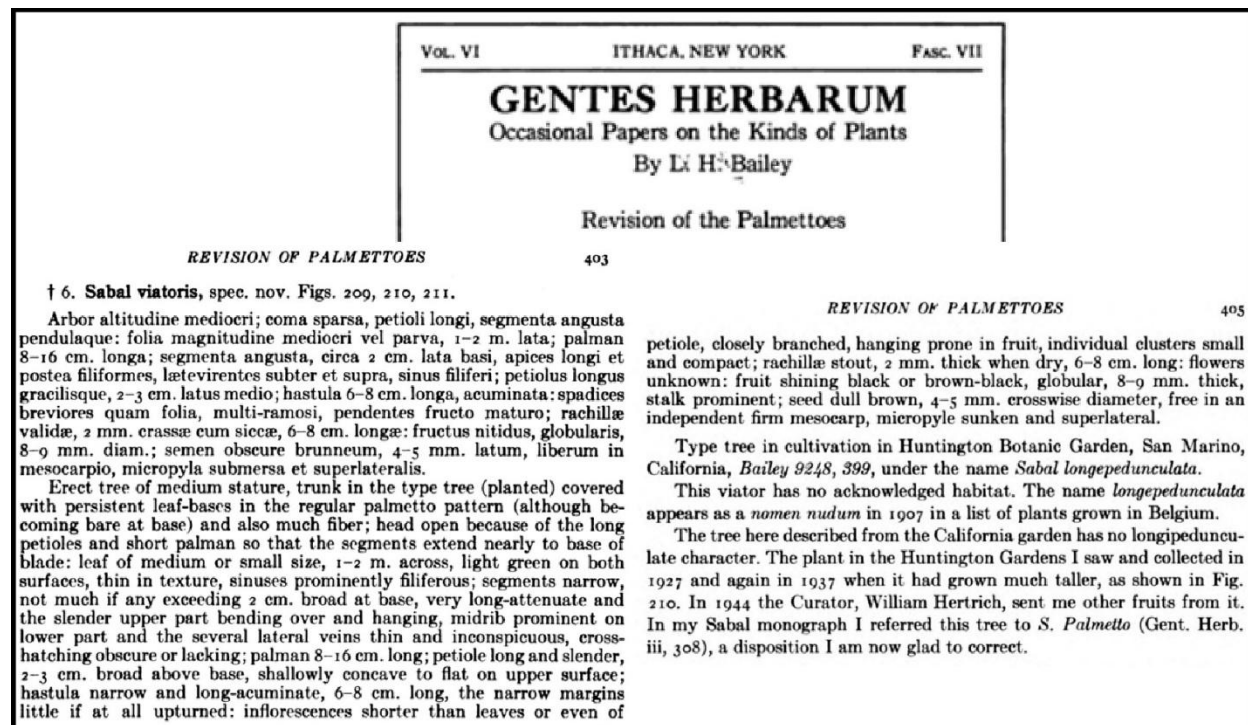
THE JAMES PALMETTO—SABAL JAMESIANA

JOHN K. SMALL

182

Sabal Jamesiana Small, sp. nov. Tree up to 5 m. tall, the stout trunk usually 1–3 m. high, usually clothed with the persistent leaf-bases: leaves loosely spreading in all directions, mostly 2–4 m. long; petiole slender, pliable, about as long as the blade or usually longer, the ligule narrowly lanceolate, inequilateral; blade longer than wide, usually 1–1.5 m. long, flat, relatively finely ribbed, with the very numerous (70–100) segments much shorter than the undivided part, pliable and gracefully curving or drooping, sparingly filiferous: spadix about 1 m. long, much branched: flowers smaller than in *S. Palmetto*: calyx nearly 2 mm. long; lobes broadly ovate, nearly as long as the tube, black-tipped: petals oval-ovate, about 3 mm. long, cream-colored: filaments nearly as long as the petals, stout-subulate: anthers ovate-sagittate, much shorter than the filaments, blunt: drupe depressed, mostly 7–9 mm. in diameter, black: seed depressed, mostly 12–14 mm. in diameter, black: seed much depressed, 9–10 mm. broad, nearly black.—Hammocks, Everglade Keys, Florida. The plant is named for Mrs. Arthur Curtiss James, a patron of botany and horticulture.

42. Small (1927: 182) showing that he validly published the name *Sabal jamesiana*, basing it on Figure 1, page 183 in his account.



43. Bailey (1944: 403) validly published the name *Sabal viatoris*, citing two specimens, thus creating syntypes.

Sabal viatoris

Bailey (1944: 403) (**Fig. 43**) validly published the name *Sabal viatoris*, citing two specimens, *Bailey 399* and *Bailey 9248* as types, thus creating syntypes (Article 9.7 Note 8(a), Ex. 9, Turland et al. 2025). Zona (1990) designated *Bailey 9248* as the lectotype; however, Reveal and Nixon (2013) explained that this specimen does not exist at BH. For this reason, they designated *Bailey 399* as the lectotype but referred to a complete collection, which is considered a first-step lectotypification (Article 9.17, Turland et al. 2025). Here, BH000281616.1 to BH000281616.5 sheets are designated as the second-step lectotype (Article 8.3, Turland et al. 2025). The remaining nine duplicates, BH000281617.1 to BH000281617.9 and Figure 210 in Bailey (1944: 406) (**Fig. 33**), cited in the protologue, are considered isolectotypes.

Based on plant accession records and Hertrich (1951), the palm from which Bailey made his two collections, *399* and *9248*, in 1927 and again in 1937 at The Huntington Library, Art Galleries, and Botanical Gardens in San Marino near Los Angeles, was originally obtained as a plant from W. A. Manda, South Orange, New Jersey in 1913 under the name *Sabal longipedunculata*. The Huntington assigned it the garden accession number of 11117. In 1944, The Huntington sent fruits to Bailey, which he used, along with his two earlier collections, to determine that this plant was an undescribed, new species, which he named *S. viatoris* later that year. Thus, Bailey based *S. viator-*



44. The type plant of *Sabal viatoris* at The Huntington (11117) in 2008. © 2008 D. R. Hodel.



45. The type plant of *Sabal viatoris* at The Huntington (11117) in 2008. © 2008 D. R. Hodel.



46. Inflorescences on the type plant of *Sabal viatoris* at The Huntington (11117) in 2008. © 2008 D. R. Hodel.



47. Fruits from the type plant of *Sabal viatoris* at The Huntington (11117) in 2008. © 2008 D. R. Hodel.

is on at least two and likely three collections from at least two and perhaps three different years.

The type plant was last checked in an inventory review in 2004 and at that time was extant. Co-author Hodel, who has frequented The Huntington for over 45 years and photographed most of its palms during that time, checked his transparencies (slides) from the 1980s, 1990s, and up to 2003 but was unable to find photographs of 11117. When checking his digital images post-2003, though, he found several photographs of 11117 taken in 2008 (Figs. 44–47). Unfortunately, an on-the-ground check for 11117 in 2026 failed to find this palm and we suspect that it was destroyed in the horrific great windstorm of November 30–December 1, 2010 or increasingly common similar storms since then.

Comparing the the height of 11117 in Figure 210 of Bailey (1944), which was taken in 1937, with Hodel's 2008 photos, shows that the palm probably at least tripled in height in 71 years. Also, the height of 11117 in the 1937 photo suggests it was likely 20 to 25 years of age; thus, 11117 likely was close to or more than 100 years of age when it met its untimely demise. Fortunately, herbar-

ium specimens of 11117, while of great historic interest but without any type status, were made and deposited at The Huntington (HNT) in 1965 (Figs. 48–50).

Glassman (1972) indicated that *Sabal viatoris* is a synonym of *S. palmetto*.

Sabal yapa Becc. Webbia 2: 64. 1907. Type. CUBA. Location and date unknown, C. Wright 3971 p. p. A, emend. Moya (lectotype, Glassman 1972: 201, US, identified here, US00087509 (Fig. 51); isolectotype: HAC28878! [photo US87509]).

Syntypes of *Sabal yapa*: CUBA. Locality unknown, 1829, Sagra 222 (F233583 [photo B], FI052579.4 [frag. ex G, mix], G [n.v.], P01794502, P01794505). Locality and date unknown, C. Wright 3971 p. p. B (B [destr.], FI052579.3 [frag. ex B, mix], FI052579.b [draw. of B, mix]). **Mayabeque** province, Batabanó municipality, “Batabanó”, n.d., Torralba 179 (B [destr.], FI052579.1 [frag. ex B, mix]). **MEXICO.** Plantæ Yucatanæ, Gaumer 317 (FI052579.5 [frag. ex MO, mix], MO976848 [n.v.], NY02320293, US00016704 [n.v.]).

Update of excluded names of ***Sabal yapa*** Becc.

- “*Sabal japa*” C. Wright, in Sauvalle, Anales Acad. Ci. Med. Habana, 8: 562. 1871, nom. nud.
- “*Sabal japa*” M. Gómez, Noc. Bot. Sist. 51. 1893, not validly published. Cited by Beccari 1907: 64.
- “*Inodes japa*” Standl., Contr. U.S. Natl. Herb. 23(1): 71. 1920, not validly published.
- “*Inodes japa*” Standl., Publ. Field Columb. Mus., Bot. Ser. 3: 219. 1930, not validly published.
- “*Sabal japa*” C. Wright ex Bartlett, Publ. Carnegie Inst. Wash. 461(2): 36. 1935, not validly published.

Etymology. ‘*Palma japa*’ was the common name used for the species since Fernández (1867: 126). Several years later, Sauvalle (1871) proposed *Sabal japa*, which, because it is a nomen nudum, cannot replace the name *Sabal yapa* that Beccari (1907) validly published even though Beccari had misspelled it.

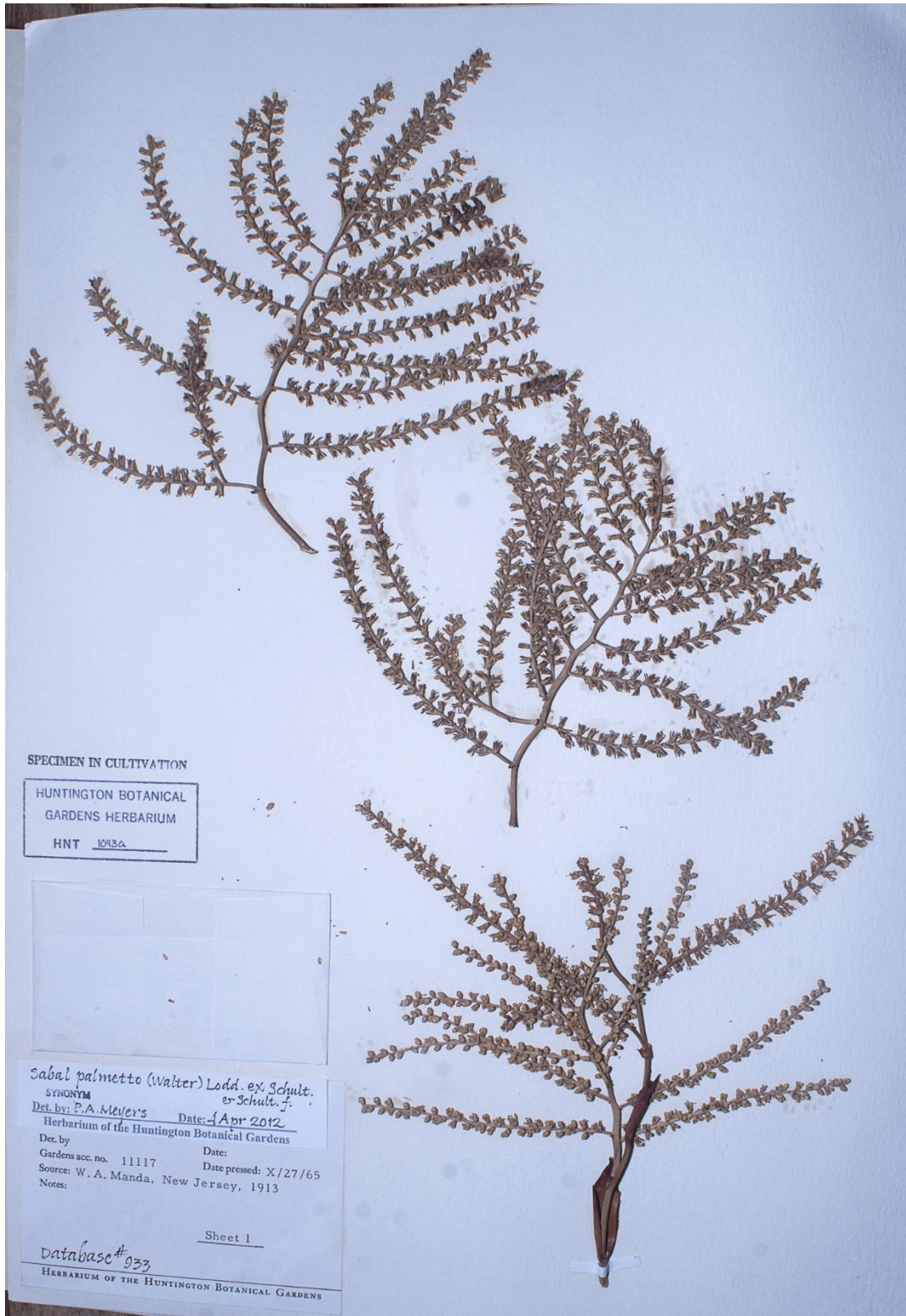
= *Sabal mayarum* Bartlett, Publ. Carnegie Inst. Wash. 461: 35. 1935. Type: BELIZE. Belize District, British Honduras, Maskall, 19 Feb. 1934, Gentle 1156 (lectotype, designated by Moya



48. Herbarium specimen of the type plant of *Sabal viatoris* at The Huntington (11117), Kimmach s.n. (HNT), made in 1965. © 2026 D. R. Hodel.



49. Herbarium specimen of the type plant of *Sabal viatoris* at The Huntington (11117), *Kimnach s.n.* (HNT), made in 1965. © 2026 D. R. Hodel.



50. Herbarium specimen of the type plant of *Sabal viatoris* at The Huntington (11117), *Kimnach s.n.* (HNT), made in 1965. © 2026 D. R. Hodel.



51. Lectotype of *Sabal yapa*, C. Wright 3971 p. p. A, US00087509. © 2026 and courtesy of US.

et al. 2021: 5, MICH1050278B; isolectotypes: GH [n.v.], K001801236, MICH1050278A, MICH1050278C, MICH1050278D, MICH1050278E (**Fig. 52**), MICH1050278F, MICH1050278G (**Fig. 53**), MO106817 [n.v.], MO976846 [n.v.], NY00067596).

Paratypes of *Sabal mayarum*: BELIZE. Corozal District, 1931, *Gentle 602* (MICH1001125 [n.v.]); *Gentle 628* (MICH1001126 [n.v.]). CUBA. Pinar del Río (San Juan y Martínez), “Galafre”, ?7 mar. 1911, *Britton and Cowell 9845* (GH [n.v.], K001801257, NY1662558, NY1662559, NY1662560, NY1662588, US00012352 [n.v.]). MEXICO. Quintana Roo State (José María Morelos), “Chichankanab”, 1916, *Gaumer 23967* (F0094640, MO976843 [n.v.], NY02320289, US00016683 [n.v.], US00016684 [n.v.]); 1917, *Gaumer 24166* (A [n.v.], MO976844 [n.v.], NY02320290, S06-12636 [n.v.], UPS229257 [n.v.], US00016702 [n.v.]); n.d., *Gaumer 1359* (GH [n.v.], MO976847 [n.v.], P [n.v.], S06-12635 [n.v.], UPS [n.v.], US00016703 [n.v.]); *Gaumer 24164* (BR0000035053439, E00324607, US00016685 [n.v.]). Yucatán State, Merida, 23 Jun. 1865, *Schott 196* (US00016682 [n.v.], US00065284 [n.v.]).

Etymology. Bartlett (1935) named it “mayarum” because it occurred in the Maya area.

= *Sabal peregrina* L. H. Bailey, *Gent. Herb.* 6: 400. 1944. Type. [Cultivated. USA, Florida state, Monroe County], “Key West, Florida, in a yard at Duval and Caroline streets,” 5–7 Aug 1935, *L.H. Bailey 2DH* (lectotype, [first step] Reveal and Nixon 2013: 35, [second step] **designated here:** BH000281615.1 (**Fig. 54**), BH000281615.2, BH000281615.3, BH000281615.4, BH000281615.5, BH000281615.6, BH000281615.7, BH000281615.8; isolectotypes: BH000281614.1, BH000281614.2, BH000281614.3, BH000281614.4, BH000281614.5, BH000281614.6).

Syntype of *Sabal peregrina*. Cultivated. USA, Florida state, Monroe County, “Key West, Florida, in a yard at Duval and Caroline streets,” 5–7 Aug 1935, *L. H. Bailey 322x* (BH000281613.1, BH000281613.2).

Etymology. Bailey (1944) named it “*peregrina*” because its place of origin is unknown and it is cultivated in several regions.

= *Sabal yucatanica* L. H. Bailey, *Gent. Herb.* 6: 418. 1944. Type. MEXICO. [Yucatán State], “Chichen Itza, in yard of hacienda, native in the area,” Jun. -Jul. 1938, *C.L. Lundell and A.A. Lundell 7368* (lectotype, [first step] Glassman 1972: 201, MICH [second step] **designated** Moya, Duno & Oviedo 2021: 6: MICH1050280A; isolectotypes: BH000283898 [frag.], MICH1050280B, MICH1050280C, MICH1050280D, MICH1050280E (**Fig. 55**), MICH105028-



52. One sheet of several of the isolectotype of *Sabal mayarum* at MICH, Gentle 1156, MICH1050278G. © 2026 and courtesy of MICH.



53. Another sheet of several of the isolectotype of *Sabal mayarum* at MICH, Gentle 1156, MICH1050278E. © 2026 and courtesy of MICH.



54. One sheet of many of the lectotype of *Sabal peregrina* at BH, L.H. Bailey 2DH, BH000281615.1. © 2026 and courtesy of BH.



55. One sheet of many of the lectotype of *Sabal yucatanica* at MICH, C.L. Lundell and A.A. Lundell 7368, MICH1050280E. © 2026 and courtesy of MICH.

OF, MICH1050280G (**Fig. 56**), MICH1050280H, MICH1050280I, MICH1050280J, MICH1050280K, MICH1050280L, MICH1050280M, MICH1050280N, MICH1050280O).

Syntype of *Sabal yucatanica*. MEXICO. Quintana Roo state, Cozumel municipality, “Quintana Roo at Coba, bordering Lake Macanxac,” C.L. Lundell and A.A. Lundell 7727 (MICH [n.v.]).

Etymology. Bailey (1944) named it “*yucatanica*” because is very common in dry forests in Yucatan Peninsula where the type specimen was collected.

Specimens Examined (in Cuba and without type status): **CUBA. Artemisa** (San Cristóbal), río Santa Cruz, n.d., C. Wright 3971 p. p. C (GH00549119 p.p.a, GOET025819.2 ex HAN). **La Habana** (Boyeros), Santiago de las Vegas, 29 Oct. 1905, Hermann 3316 (FI ex ECA [n.v.], HAC ex ECA); La Pita, Santiago de las Vegas, 21 Mar. 1931, Roig & Hermann s.n. (HAC ex Roig5467.1, HAC ex Roig5467.2); finca la Cámara, Apr. 193, León 18009 (HAC ex LS4907!); **Matanzas** (Ciénaga de Zapata): Monte Santo Tomas, 4–11 May 1927, Acuña s.n. (HAC ex Roig4308.1!, HAC ex Roig4308.2!). **Mayabeque** (Batabanó), 14 Mar. 1890, Morales 1157 (HAC ex IH!); Bailey 12548, by Bailey 1944: 411 (BH [n.v.]); Pozo Redondo, Bailey 12564, by Bailey 1944: 411 (BH [n.v.]); Sabana de Pimienta, 12 Jun. 1928, León 13394 (HAC ex LS!, NY1662556, NY1662557); Hacienda Quintana, 4 Jul. 1929, León 13908 (GH [n.v.], HAC ex LS!, HAC ex LS4911!, NY1662561, US00012278 [n.v.], US00012353 [n.v.], US00012354 [n.v.]); León 14160, by Bailey 1944: 411 (BH [n.v.]); 17 Aug. 1929, León 14155 (HAC ex LS4902!); León 14161 (BH [n.v.], HAC ex LS!); monte Peralta, Oct. 1920, León 14240 (HAC ex LS4897!); Mégano, 30 Jan. 1930, León 14283 (HAC ex LS4905!); hacienda Quintana, 4 Jul. 1928, León & Néstor 13909 (HAC ex LS!, HAC ex LS4911!, NY1662535, NY1662550); 3 Apr. 1930, León 14299 (HAC ex LS4898!, HAC ex LS4899!); León 14301 (HAC ex LS!); León 14302 (HAC ex LS 4901!, HAC ex LS4904!); León 14304 (HAC ex LS4903!); Hacienda Peralta, 13 Feb. 1930, León 14287 (HAC ex LS4906!, HAC ex LS4910!, S-PL-24292 [n.v.]); León 14288 (NY1662562, NY1662563); León 14289 (HAC ex LS4908!); Batabanó, Feb. 1943, Ma. Victorin 56463 (MT00116910); 27 Apr. 1943, Ma. Victorin 58168 (GH [n.v.], MT00116911A, MT00116911B, US00012216 [n.v.], US00012301 [n.v.]); (Bejucal), La Pita, base Sierra Bejucal, Bailey 331, by Bailey 1944: 411 ([n.v.]). **Pinar del Río** (Guane), Guane, sur de El Cayuco, 21 Feb. 1926, Roig s.n. (HAC ex Roig3934!); Feb. 1928, Fors s.n. (HAC ex Roig4621!); Boquerón, Mendoza, 2 Apr. 1931, Bailey, Roig & León 15183 (BH [n.v.], HAC ex Roig5487.1!, HAC ex Roig5487.2!); (Minas de Matahambre), Luis Lazo, La Güira, 12 Dec. 1866, C. Wright 3971 p. p. D (GH00549119 p.p.b, GOET025819.1 ex HAN). San Juan y Martínez: Galafre, 7 Mar. 1911, Britton & Cowell 9845 (GH [n.v.], K001801257, NY1662558, NY1662559, NY1662560, NY1662588, US00012352 [n.v.]). **Isla de la Juventud** municipality: Cerro San Juan del Mar, 20 Feb. 1916, Brit-



56. Another sheet of many of the lectotype of *Sabal yucatanica* at MICH, C.L. Lundell and A.A. Lundell 7368, MICH1050280G. © 2026 and courtesy of MICH.

ton, Britton & Wilson 14646 (CM143486 [n.v.], CM143487 [n.v.], US00012249 [n.v.]). Location and date unknown, *C. Wright* 3971 p. p. E (A00028542, A00028543, A00028544, BRU00059705 [n.v.], BRU00059706 [n.v.], BRU00059707 [n.v.], F920958.1, F920958.2, GH00028545, GH00028546, GH00028547, GH00549126, HAC ex HABA.1!, HAC ex HABA.2!, HAC28877! [photo US87507], HAC28878! [photo US87508], K000462867, K000462868, K000462869, K000462870, NY00071241, NY00071242, NY00071243, NY1661990 [mix *Coccothrinax*], NY1661991, P00725549, P00725550, US00087507, US00087508). Locality and date unknown, *Hermann* 2855 (B [destr.], FI052579.2 [frag. ex B, mix]).

Moya field observations: CUBA. Isla de la Juventud: municipality: Cerro San Juan, Sta. Fe, 1 Oct. 2018, *Serie Moya* 1818; Mirador Sierra Las Casas, 1 Oct. 2018, *Serie Moya* 1834 (**Fig. 57**); playa Bibijagua, 3 Oct. 2018, *Serie Moya* 1864c (**Fig. 58**); Lomita W Bibijagua, 3 Oct. 2018, *Serie Moya* 1867.

Hodel field observations: CUBA. Artemisa (Bahía Honda): San Juan Guacamayo, Las Pozas, 22.851111, -83.235278, 24 Mar. 2017 (**Fig. 59**).

Geographical Distribution (Fig. 60): BELIZE. Belize, Corozal, Orange Walk, Stann Creek, Toledo. **CUBA. Artemisa** (Artemisa^R, Alquizar^R, Bahía Honda^A, Güira de Melena^R, Mariel^R, Quivicán^R, San Cristóbal^R); **Cienfuegos** (Aguada de Pasajeros^R). **La Habana** (Boyeros^H). **Matanzas** (Ciénaga de Zapata^R, Matanzas^H, Unión de Reyes^R). **Mayabeque** (Batabanó^H, Bejucal^H, Guines^R, Melena del Sur^R, Nueva Paz^R). **Pinar del Río** (Consolación del Sur^R, Guane^H, Minas de Matahambre^H, Pinar del Río^H, Sandino^R, San Juan y Martínez^H, San Luis^P), Isla de la Juventud^H. **MEXICO. Campeche** (Calakmul, Calkin, Campeche, Carmen, Champotón, Escárcega, Hopelchén, Tenabo). **Quintana Roo** (Bacalar, Benito Juárez, Cozumel, Francisco Carrillo Puerto, Lázaro Cárdenas, María Morelos, Othón P. Blanco). **Yucatán** (Celestún, Dzilam del Bravo^H, Dzemul, Halacho, Hocabá, Honucmá, Izamal, Maxcanú, Mérida, Muna, Oxkutzcab, Progreso, San Felipe, Sucilá, Ticul, Tizimín, Tzucabab, Valladolid, Yobaín). By Moya, Duno & Oviedo (2021: 13).

Biogeographical Distribution: CUBA. Province **CUBA**, subprovince Western Cuba, sector Peninsularicum (Guanahacabibense^H, Zapatense^H), sector Pinaricum (Sabaloense^H, Pinarense^H, Geronense^H), sector Rosaricum (Cajalbanense^H; subprovince Central Cuba, sector Havanicum (Güinense^H, Havanense^A). Province **YUCATÁN PENINSULA** (Northern Yucatán^H and Belizean Swamp Forests^H). By Moya, Duno & Oviedo (2021: 143).

Notes.

Sabal yapa



57. *Sabal yapa* at Mirador Sierra Las Casas, Isla de la Juventud, 1 Oct. 2018, *Serie Moya 1834*. © 2018 C. E. Moya López.

Beccari (1907: 64–68) (**Fig. 61**) validly published the name *Sabal yapa*, citing various collections from Cuba, including *C. Wright 3971* (B), *Torralba 179* (B (dest.)), and *Sagra 222* (G), and one from Mexico, *Gaumer 317* (MO), but without defining a type, thus creating syntypes (Greuter (pers. comm.) excluded *Gaumer 317* because Beccari included it only with doubt). Glassman (1972: 201) was the first to designate *C. Wright 3971* in the US as the type; here, US00087509 is identified as the lectotype. Moya (2025a: 38) amended this collection as “p. p. A.” Also, we amended the syntype *C. Wright 3971* as “p. p. B.”

C. Wright in Sauvalle (1871: 562) first listed *Sabal japa*, associating *Wright 3971* with the name, but without any description; therefore, it must be regarded as a *nomen nudum*. (Article 38 Ej.1, Rec. 50B, Turland et al. 2025).

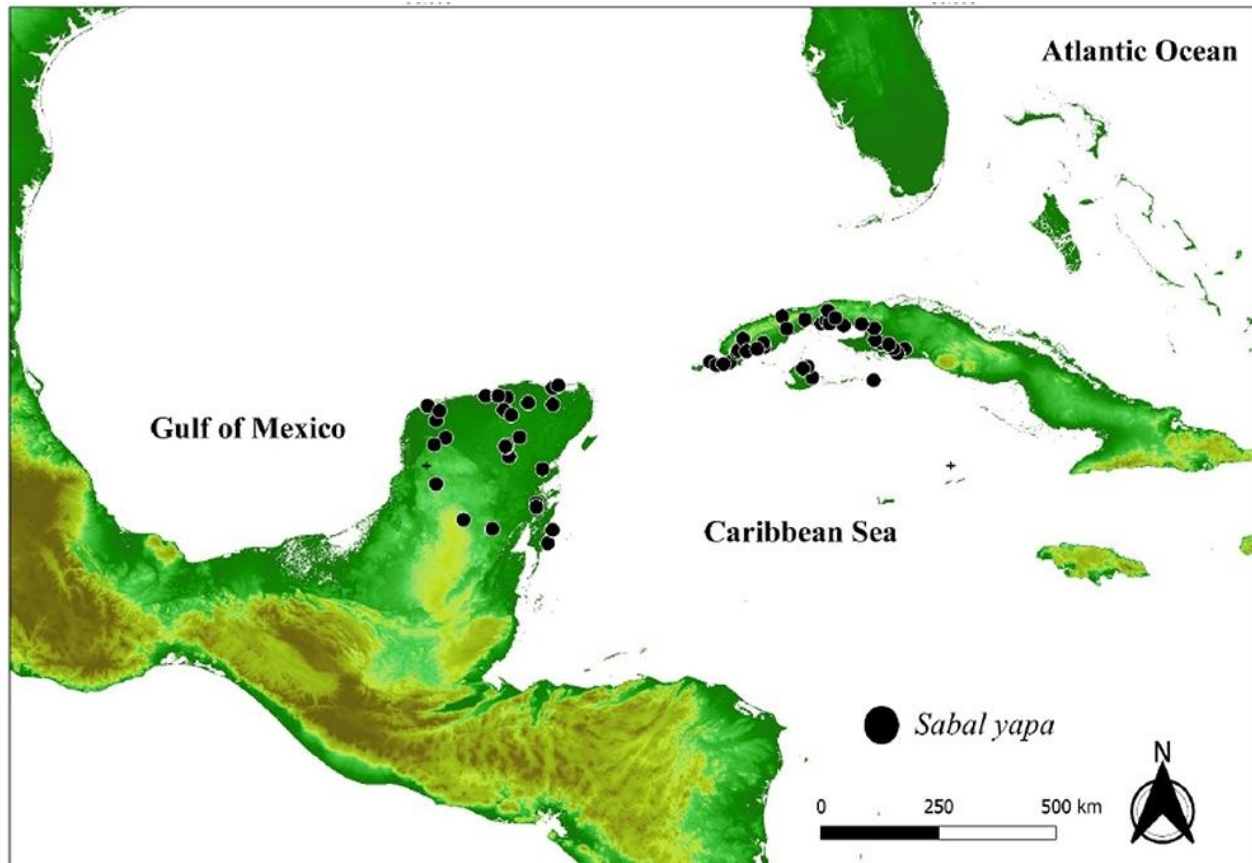
Standley (1920: 71) did not validly publish the new combination “*Inodes japa* (Wright) Standl.” when he cited it as a basionym of *Sabal japa* (*Anales Acad. Ci. Med. Habana*, 8: 562. 1871); thus, it was a *nomen nudum* (Article 36 Ej. 8, 9, Turland et al. 2025).



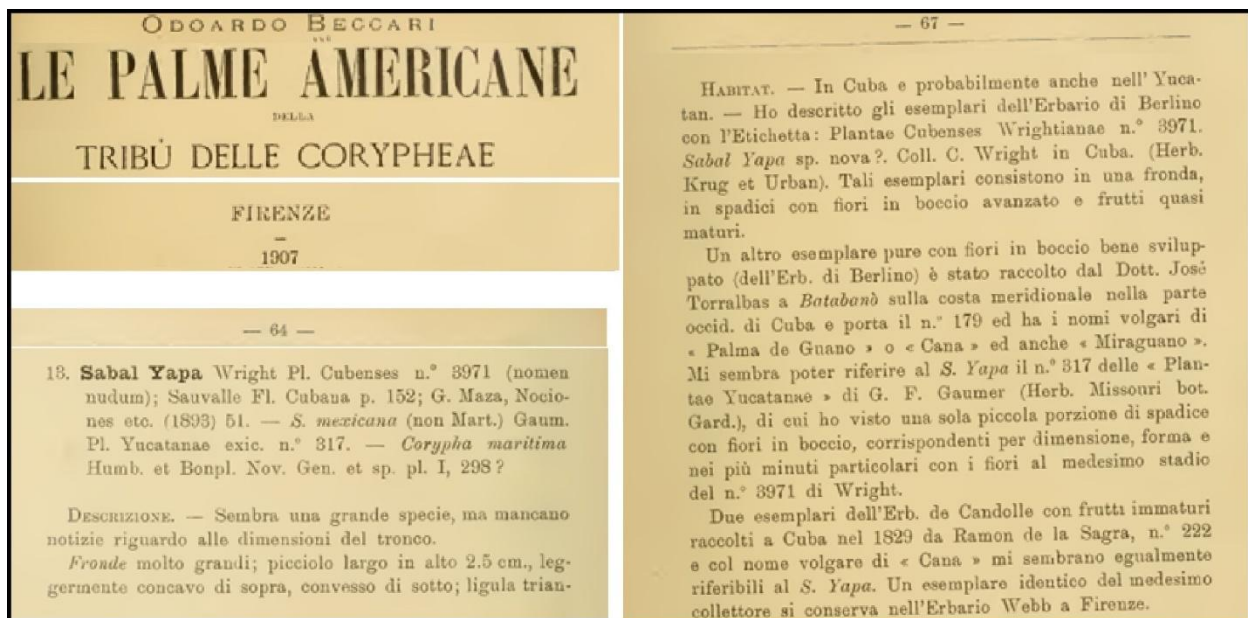
58. *Sabal yapa* at playa Bibijagua, Isla de la Juventud, 3 Oct. 2018, Serie Moya 1864c. © 2018 C. E. Moya López.



59. *Sabal yapa* at Las Pozas, San Juan Guacamayo, Bahía Honda, Artemisa, 24 Mar. 2017, DRH 8226. © 2017 D R. Hodel.



60. Map showing distribution of *Sabal yapa* in the Yucatan Peninsula (Mexico, Belize) and western Cuba. © 2021 Moya et al. (2021: 13) and prepared by Claudia Ramírez Díaz.



61. Beccari (1907: 64–68) validly published the name *Sabal yapa*, citing various collections from Cuba, thus creating syntypes.

Standley (1930: 219), despite being consistently cited, did not provide a valid publication; rather, he merely repeats what he published in 1920 and lists the common names and uses of the species for Yucatán.

Bartlett (1935: 36) did not validly publish the new combination “*Sabal japa* (Wright) Bartlett” when he explicitly cited *Sabal japa* C. Wright (Sauvage 1871: 562), a *nomen nudum*. (Article 36 Ej. 8, 9, Turland et al. 2025).

Two C. Wright specimens at GOET lack a collection number but bear the same labels as specimen GH00549119; here, we treat them as *C. Wright 3971*, which are emended according to locality as “p. p. C” and “p. p. D”.

Sabal mayarum

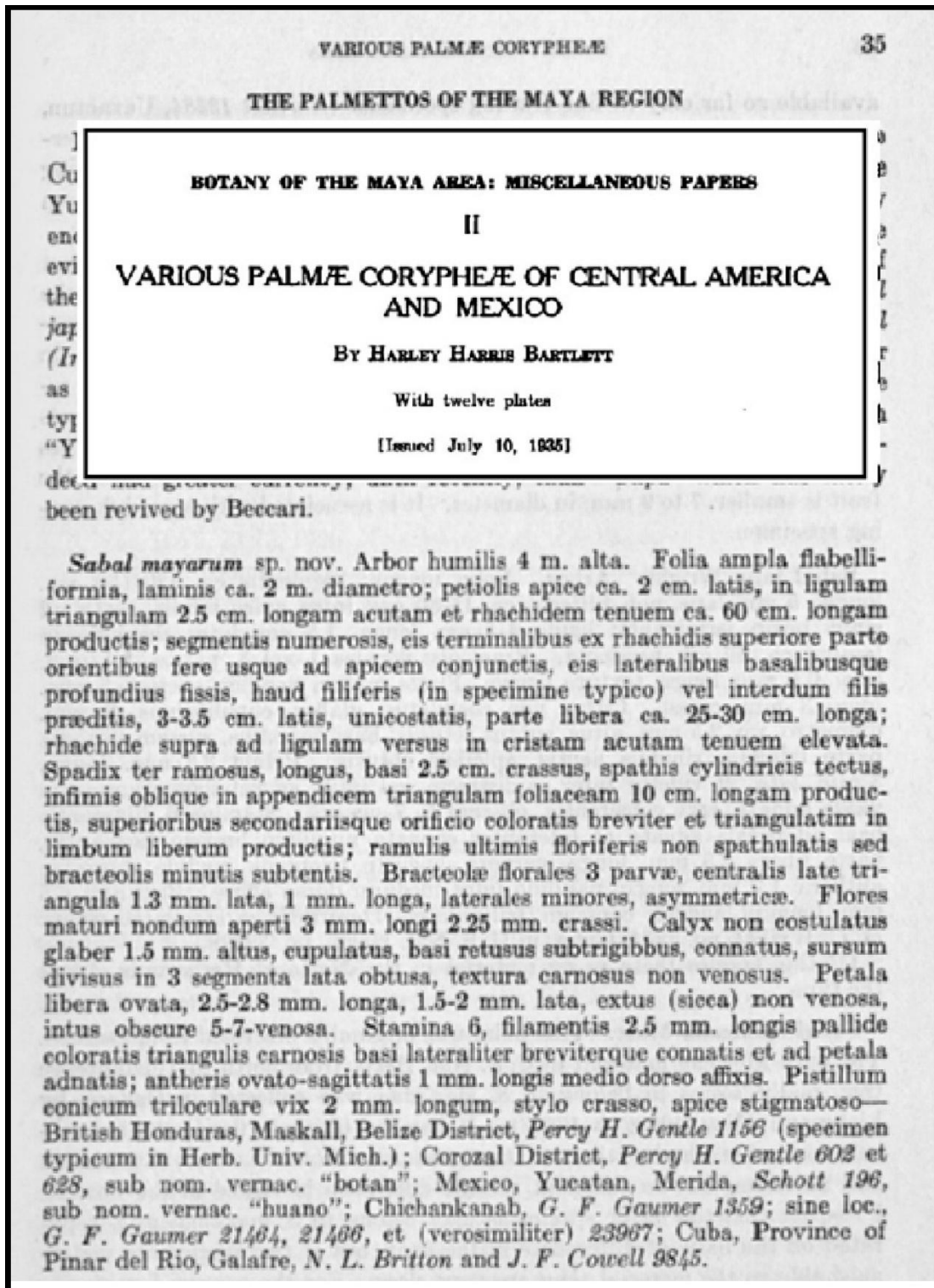
Bartlett (1935: 35) (**Fig. 62**) validly published the name *Sabal mayarum*, basing it on a plant from British Honduras (Belize), designated *Gentle 1156* in MICH as the type, creating syntypes by referring to an entire gathering (Article 9.6, Turland et al. 2025). He also designated several paratypes: *Gentle 602* and *Gentle 628* from Belize; *Schoott 196*, *Gaumer 1359*, *Gaumer 24164* [not 21464], *Gaumer 24166* [not 21466], *Gaumer 23967* from Mexico; and Britton and *Cowell 9845* from Cuba.

Glassman (1972: 199) considered *Sabal mayarum* a synonym of *S. yapa*. Moya, Duno, and Oviedo (2021: 5) designated MICH1050278B as the lectotype (Article 9.17 Turland et al. 2025).

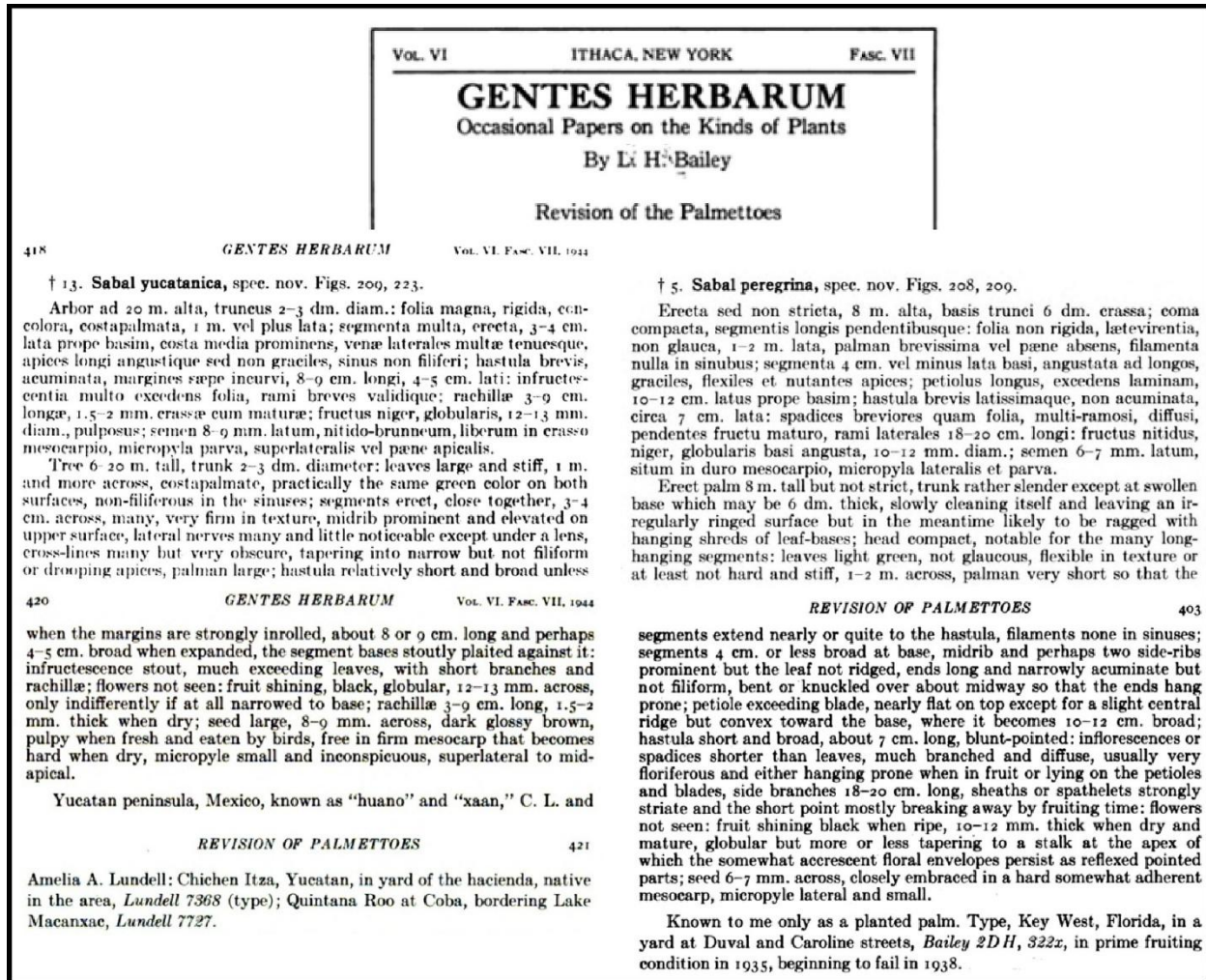
Sabal peregrina

Bailey (1944: 400) (**Fig. 63**) validly published the name *Sabal peregrina*, basing it on a plant cultivated in Key West, currently in Monroe County, Florida, U.S. A., creating syntypes because he cited two specimens of his own collections (Article 9.6, Turland et al. 2025). While Glassman (1972: 200), like Zona (1990: 656), considered *L.H. Bailey 322x* at BH, comprising only fruits, to be the type specimen, Reveal and Nixon (2013: 35) identified a conflict with the protologue; they designated *L.H. Bailey 2DH* at BH as the lectotype, thereby establishing syntypes by referencing a complete collection. Moya, Duno, and Oviedo (2021: 6) designated *L.H. Bailey 2DH* (BH000281614), consisting of a single specimen mounted on six herbarium sheets, as the lectotype in a second-step (Article 8.3, Turland et al. 2025). In reality, the lectotype of *S. peregrina*, *L.H. Bailey 2DH* (BH000281615), consists of a single specimen mounted on eight herbarium sheets, and Bailey used it in his original description; consequently, this entry serves to update that second-step designation, reclassifying the material under BH000281614 as isolectotype.

Glassman (1972: 200) also considered *Sabal peregrina* as a synonym of *S. yapa*.



62. Bartlett (1935: 35) validly published the name *Sabal mayarum*, basing it on *Gentle 1156* from British Honduras (Belize) but created syntypes by referring to an entire gathering.



63. Bailey (1944: 400) validly published the name *Sabal peregrina* but created syntypes because he cited two specimens of his own collections.

Sabal yucatanica

Bailey (1944: 418) validly published the name *Sabal yucatanica*, basing it on a plant from Chichen Itza and designating Lundell 7368 as the type, creating syntypes by referring to an entire gathering (Article 9.6, Turland et al. 2025). Glassman (1972: 201), like Zona (1990: 656), created syntypes by referring to an entire gathering in MICH. Moya, Duno, and Oviedo (2021: 12) argued that Glassman created a first-step lectotype and designated MICH1050280A (Fig. 64) as the second-step lectotype (Article 9.17, Turland et al. 2025), because a single, original label in common is lacking (Article 8.3, Turland et al. 2025).

Glassman (1972: 201) also considered *S. yucatanica* a synonym of *S. yapa*.



64. Moya López et al. (2021: 12) argued that Glassman created a first-step lectotype and designated MICH1050280A as the second-step lectotype because a single, original label in common is lacking.

Appendices

Cuban *Sabal* Specimens Requiring Precise Identification (here, 72 specimens are identified to the genus *Sabal*)

CUBA. *Sabal* sp. **Artemisa** (Alquízar), Ojo de Agua, ciénaga de Guanimar, 22 Aug. 1929, *León & Néstor 14179* (HAC ex LS.1!, HAC ex LS.2!, by Zona as *Sabal* cf. *maritima*); (San Cristóbal), San Cristóbal, 11 Nov. 1987, *Dechamps 12022* (K001287183 [n.v.]). **Cienfuegos** (Abreus), Cieneguita, 12 Sep. 1929, *León & Suero 14188* (NY1662522); Horquitas, 20 May 1990, *Dechamps et al.* (BR0000035053316); sabana Antón Recio, 22 Jun. 1922, *León 15607* (HAC ex LS4873); (Cumanayagua), La Sierra, 9 Jun. 1929, *Jack 7398* (US00012349 [n.v.]). **Granma** (Pilón), Ensenada de Mora, 26–29 Mar. 1912, *Britton, Cowell & Shafer 13022* (NY1662568). **Guantánamo** (Imías), banks of Imías river, 17 Jul.–4 Aug. 1924, *León 12285* (NY1661994, NY1661995, NY1661996). **Holguín** (Cacocum), Cupey in savannas, 7 Mar. 1915, *Ekman 4926* (NY1662513); 4 Aug. 1915, *Ekman 6341* (NY1662514). **Las Tunas** (Puerto Padre), Puerto Padre, 1 Aug. 1930, *Curbelo s.n.* (HAC ex Roig5266.1!, HAC ex Roig5266.2!). **Matanzas** (Cárdenas), península Hicacos, 7 Nov. 1987, *Dechamps 12005* (BR0000035053385, K001835510); Varadero, 9 Jun. 1931, *Hermann s.n.* (HAC ex Roig5670.1, HAC ex Roig5670.2); 27 Dec. 1937, *Killip 32429* (US00012148 [n.v.]). **Mayabeque** (Batabanó), Batabanó, 17 Apr. 1903, *Shafer 443* (CM333346 [n.v.], CM333347 [n.v.], NY1662538, NY1662547); Mégano, 30 Jan. 1930, *León 14284* (NY1662555); wet coastal savanna, 12 Apr. 1912, *Britton, Cowell & C. de la Torre 13356* (NY1662536, NY1662543, NY1662544, US00012348 [n.v.]); Batabanó, 29 Dec. 1929, *León 14262* (NY1662564, NY1662565, NY1662566, NY1662567); 7 Dec. 1930, *Killip 13629* (US00012171 [n.v.], US00012198 [n.v.]); ciénaga de Batabanó, 5 Sep. 1929, *León 14183* (HAC ex LS4921, NY1662539, NY1662545, NY1662546, NY1662549); Batabanó, hacienda Pimienta, 3 Nov. 1932, *León 15873* (NY1662542); hacienda San Francisco, 26 Jun. 1936, *León 14588* (HAC ex LS4924); (Madrugá), loma la Jíquima, 20 Nov. 1930, *León & Ramos 14685* (US00012195 [n.v.], US00012196 [n.v.]). **Pinar del Río** (Guane), Guane, 4,5 Mar. 1911, *Britton, Britton & Cowell 9753* (NY1662551, NY1662552, US00012197 [n.v.]); (Pinar del Río), embarcadero la Coloma, 24 Apr. 1926, *Roig s.n.* (HAC ex Roig3976); finca de Portas, 12 Feb. 1925, *Roig & Fors s.n.* (HAC ex Roig4623); (La Palma), La Palma, 27 Oct. 1992, *Dechamps & Carreras 12586* (BR0000035053392). **Sancti Spíritus** (la Sierpe), monte Reguera, Mapos, 30 Jul. 1934, *León 16126* (HAC ex LS4937); Sancti Spíritus, sabana S Guasimal, 22 Jun. 1918, *León & Roca 7847* (NY1662512). **Villa Clara** (Sagua la Grande), Sagua la Grande, 5 Sept. 1903, *Britton & Wilson 360* (NY1662525, NY1662526, NY1662527, NY1662585 [frag.]). **Isla de la Juventud** municipality, cerro San Juan, 20 Feb. 1916, *Britton, Britton & Wilson 14646* (NY1662548, NY1662553); playa Bibijagua, 7 Feb. 1956, *Killip 45604* (US00012350 [n.v.], US00012351 [n.v.]). Unknown locality and date, *C. Wright s.n.* (GOET025823.1 ex HAN, GOET025823.2 ex HAN, GOET025825 ex HAN); *C. Wright*

s.n. (NY1662485); *C. Wright s.n.* (US00012284); *Dechamps et al. 12479* (BR4010005445412 [n.v.]); *Dechamps et al. 12541* (BR4010005446440 [n.v.]); unknown collector, [Cuba 3] (GOET025815.1 ex HAN, GOET025815.2 ex HAN); unknown collector, [Cuba 7 (GOET025887 ex HAN)].

Fifteen unlocated León Cuban *Sabal* Collections (identified here as *Sabal sp.*)

CUBA. **Artemisa** (Güira de Melena), al N de Cajío, 8 May 1930, *León 14392* ([n.v.]). **Cienfuegos** (Cienfuegos), Cienfuegos, 1 Aug. 1930, *León 14616* ([n.v.]). **Mayabeque** (Batabanó), hacienda Quintana, 17 Aug. 1919, *León s.n.* ([n.v.]); E de Batabanó, 3 Apr. 1930, *León 14303* ([n.v.]); 26 Aug. 1930, *León 14587* ([n.v.]); hacienda Peralta, 4 Jul. 1929, *León 13910* ([n.v.]); hacienda Pimienta, 11 Jun. 1930, *León 14579* ([n.v.]); (Madruga), Loma del Chivo, 4 Jan. 1930, *León 14276* ([n.v.]). **Pinar del Río** (Viñales), San Vicente, 4 Jan. 1932, *León 15348* ([n.v.], *León 14849* ([n.v.])). **Sancti Spíritus** (La Sierpe), Mapos, 30 Jun. 1932, *León 15813* ([n.v.]); playa Romero, 28 Jul. 1932, *León 15667* ([n.v.]); (Sancti Spíritus), Guasimal, Oct. 1931, *León s.n.* ([n.v.]). **Isla de la Juventud** municipality, Nueva Gerona, Feb. 1939, *León s.n.* ([n.v.]); Sierra de las Casas, Feb. 1940, *León 17465* ([n.v.]).

Acknowledgements

We dedicate this paper to Werner Greuter, Rosa Rankin Rodríguez, Nicholas J. Turland and Rafaël Govaerts for correcting our erroneous interpretations of the Code. We are grateful to Walter Kittredge at A and GH; Katharina Rabe and Robert Vogt at B; Anna M. Stalter, Justin Thomas Scholten, and Kevin C. Nixon at BH; Chiara Nepi and Anna Donatelli at FI; Marc Appelhans at GOET; Brad Ruhfel at MICH; Hajo Esser at M; Emily Sessa and Amy Weiss at NY; Marc Jeanson at P; and Meghann S. Tonner, Ingrid Lin, Nancy Khan, and Eric Schuettelpelz at US for making specimens and/or photos available for study and publication. Special thanks go to the facilities offered at HAC to co-author Moya López for review of the specimens studied, especially to Bertha L. Toscano Silva for her great help during the review of the collections and Jovani Rojas González for providing photos of some type specimens. We thank Paul Craft and Javier Francisco-Ortega for providing literature. We also thank the staff of the following herbaria whom we have consulted online: A, B, F, FI, G, GH, GOET, K, MICH, MO, NY, S, UPS, US, and Mid-Atlantic Herbaria Consortium, Harvard University Herbaria and Libraries online specimen catalog, as well as the BHL, GBIF, Google books, HathiTrust Digital Library, IPNI, POWO, Research Gate, and Tropicos for allowing review specimens, photos, and literature. It is also appropriate at this time to all our co-authors with whom we have worked in the past, including Rodrigo Duno de Estefano and Ramona Oviedo Prieto. We thank Milián Rodríguez Lima and Duanny Suárez Oropesa for admirable companionship and collaboration in the field and for their astute thoughts and comments on Cuban palms, especially *Sabal*. We thank Claudia Ramirez Díaz of CICY (Yucatán Scientific Research Cen-

ter) for making the distribution map of *Sabal yapa* and an anonymous reviewer for checking the manuscript. All have our sincere thanks.

Literature Cited

- Bailey, L. H. 1944. Article 11. Revision of the American Palmettoes. *Gentes Herbarum* 6(7): 366–458. [Bailey Revision of American Palmettoes](#)
- Bartlett, H. H. 1935. Botany of the Maya area: miscellaneous papers II. Publ. Carnegie Institute Washington. Washington, D.C. 461: 29–37.
[Bartlett Botany of the Maya area](#)
- Beccari, O. 1907. Le Palme Americane della Tribu delle Corypheeae. *Webbia* 2: 1–343.
<https://www.biodiversitylibrary.org/item/52725#page/257/mode/1up>
- Beccari, O. 1908. XXIV. Palmae novae antillanae. *Repert. Spec. Nov. Regni Veg.* 6: 94–96.
<https://www.biodiversitylibrary.org/page/265737#page/109/mode/1up>
- Bisse, J. 1981 (reprint 1988). *Arboles de Cuba*. Editorial Científico Técnica. La Habana.
- Borhidi, A. and O. Muñiz. 1986. The phytogeographic survey of Cuba: 2. Floristic relationships and phytogeographic subdivision. *Acta Botanica Hungarica* 32(1–4): 3–48.
- Burret, M. 1929. Palmae Cubenses et Domingenses a Cl. E. L. Ekman 1914–1923 *lectae*. *Kongl. Svenska Vetensk. Acad. Handl., ser. 3*, 6(7): 3–28.
- Burret, M. 1933. Über die Verbreitung von *Sabal mauriiformis* (Karst.) Gris. et H. Wendl. und andere Arten von *Sabal*. *Repert. Spec. Nov. Regni Veg.* 32 (1–8): 100–101.
<https://www.deepdyve.com/lp/wiley/ber-die-verbretung-von-sabal-mauritiiformis-karst-gris-et-h-wendlund-6ZaBbK3Bay>
- Cook, O. F. 1901. A Synopsis of the Palms of Puerto Rico. *Bulletin of the Torrey Botanical Club* 28(10): 525–569. <https://www.biodiversitylibrary.org/page/729152#page/654/mode/1up>
- Cuccuini, P. and C. Nepi. 2006. The Palms of Odoardo Beccari. Dipartimento de Scienze Botaniche dell' Università de Palermo, Italy.
- Dahlgren, B. 1936. Index of American Palms. *Field Museum of Natural History. Botanical Series* 14(863): 1–456.

- Dahlgren, B. 1959. Index of American Palms. Plates. Field Museum of Natural History. Botanical Series 14(355): plate 171.
- Dransfield J., N. W. Uhl, C. B. Asmussen, W. J. Baker, M. M. Harley, and C. Lewis. 2008. Genera Palmarum: The Evolution and Classification of Palms. Royal Botanic Gardens, Kew.
- Fernández Jiménez, J. M. 1867. Tratado de la arboricultura cubana y... Imprenta La Fortuna. Habana. <https://www.biodiversitylibrary.org/item/185389#page/130/mode/1up>
- Glassman, F. 1972. A review of B. E. Dahlgren's index of American palms. Phanerogamarum Monografiae, Tomus VI. Cramer, Lehre, Germany.
- Gómez de la Maza, M. 1893. Nociones de botánica sistemática. Impr. de A. Alvarez y Compañía. Habana. <https://www.biodiversitylibrary.org/item/180223#page/61/mode/1up>
- Hertrich, W. 1951. Palms and Cycads: Their Culture In Southern California As Observed Chiefly in The Huntingdon Botanical Gardens. The Henry E, Huntingdon Library And Art Gallery, San Marino, CA.
- Howard, R. A. 1988. Charles Wright in Cuba, 1856–1867. Chadwyck-Healy, Cambridge.
- Humboldt, A. 1827. Ensayo Político sobre la Isla de Cuba. Casa de Jules Renouard. Paris. [Humboldt Political Essay Cuba](#)
- JSTOR. 2026a. Global Plants. [JSTOR Global Plants](#)
- JSTOR. 2026b. [JSTOR Journals](#)
- Kunth, C. S. 1816. Palmae [Arecaceae], pp. 298–318, in: Bonpland and Humboldt (eds.), Nova Genera et Species Plantarum 1. Paris. <https://www.biodiversitylibrary.org/item/11233#page/5/mode/1up>
- IPNI. 2026. International Plant Names Index. The Royal Botanic Gardens, Kew, Harvard University Herbaria & Libraries and Australian National Herbarium. <http://www.ipni.org>
- León, H. 1946. Flora of Cuba 1. Gymnosperms. Monocotyledons. Contribuciones Ocasionales del Museo de Historia Natural del Colegio de La Salle 8: 236–269.
- Liogier, A. 1969. Flora of Cuba. Supplement. Editorial Sauce, Caracas.
-

-
- Moya López, C. E. 2025a. The Collectors of Cuban Palms (Arecaceae) 3. Charles Wright. PalmArbor, 2025-01:1–72. [Moya López Collectors of Cuban palms Charles Wright](#) DOI: <https://doi.org/10.21414/B1H59F>
- Moya López, C. E. 2025b. Contributions of Brother León to the study of Cuban *Copernicia* (Arecaceae), 1931–1936. PalmArbor, 2025-04:1–101. [Moya López Contributions of Brother León to Cuban Copernicia](#) DOI: <https://doi.org/10.21414/B1FS3R>
- Moya López, C. E. 2025c. Inventario actualizado de las palmas nativas de Cuba, actualizado 3 de julio de 2025. Preprint, Research Gate. <https://www.researchgate.net/publication/393362921> DOI: [10.13140/RG.2.2.21589.13287](https://doi.org/10.13140/RG.2.2.21589.13287)
- Moya López, C. E. 2025d. Nueva combinación para la *Coccothrinax* colectada por Curtiss y descrita por Beccari de la Isla de la Juventud, Cuba. Preprint, Research Gate. <https://www.researchgate.net/publication/393623033> DOI: [10.13140/RG.2.2.24921.63847](https://doi.org/10.13140/RG.2.2.24921.63847)
- Moya López, C. E., Duno de Stefano, R. & R. Oviedo Prieto. 2021. Charles Wright and the Cuban Palms. 9. Update *Sabal japa*. PalmArbor 2021-14: 1–30. [Moya López et al update Sabal japa](#) DOI: <https://doi.org/10.21414/B1HS3C>
- Muñiz, O. and A. Borhidi. 1982. Catalog of the palms of Cuba. Acta Botanica Academiae Scientiarum Hungaricae. 28: 309–345.
- POWO. 2026. Plants of the World Online. Facilitated by the Royal Botanic Gardens, Kew. <http://www.plantsoftheworldonline.org/>
- Regalado L., I. Ventosa, and R. Morejón. 2008. Revisión histórica de los herbarios cubanos con énfasis en las series de especímenes. Revista del Jardín Botánico Nacional, Universidad de la Habana 29: 101–138.
- Reveal, J. L. and K. C. Nixon. 2013. The palm type collection in the Liberty Hyde Bailey Hortorium (BH). Phytoneuron 2013-79: 1–46.
- Sauvalle, F. A. 1871. Cuban Flora. Revisio Catalogi Grisebachiana vel Index Plantarum Cubensium. Annals of the Academy of Physical and Natural Medical Sciences of Havana. 7: 560–566. Imp. La Antilla, Cacho-Negrete, Havana. <https://www.biodiversitylibrary.org/item/25027#page/568/mode/1up>

- Schultes J. A. and J. H. Schultes f. 1830. Caroli a Linné, Systema Vegetabilium 7(2). Stuttgart. Germany. <https://www.biodiversitylibrary.org/page/736714#page/800/mode/1up>
- Small, J. K. 1927. The James palmetto—*Sabal jamesiana*. Journal of The New York Botanical Garden 32(332): 181–185. <https://www.biodiversitylibrary.org/page/31146447#page/586/mode/1up>
- Standley, P. C. 1920. Trees and shrubs of Mexico in Contributions from the United States National Herbarium 23(1). Washington. <https://www.biodiversitylibrary.org/page/374896#page/81/mode/1up>
- Standley, P. C. 1930. Publications of the Field Museum of Natural History, Botanical Series 3(3). <https://www.biodiversitylibrary.org/page/2400050#page/67/mode/1up>
- Stauffer, F.W. and J. Stauffer. 2017. The palm (Arecaceae) collections gathered by Bonpland and Humboldt in their American journey: origin and fate of the specimens and typifications. *Candollea* 72: 5–22.
- Thiers, B. M. 2026, updated continuously. Index Herbariorum. <https://sweetgum.nybg.org/science/ih/>
- Tropicos.org. 2026. <https://www.tropicos.org/home>
- Turland, N. J., Wiersema, J. H., Barrie, F. R., Gandhi, K. N., Gravendyck, J., Greuter, W., Hawksworth, D. L., Herendeen, P. S., Klopper, R. R., Knapp, S., Kusber, W.-H., Li, D.-Z., May, T. W., Monro, A. M., Prado, J., Price, M. J., Smith, G. F. & Zamora Señoret, J. C. 2025. International Code of Nomenclature for algae, fungi, and plants (Madrid Code), Regnum Vegetabile 162. Chicago: The University of Chicago Press. DOI: [10.7208/chicago/9780226839479.001.0001](https://doi.org/10.7208/chicago/9780226839479.001.0001)
- Walter, T. 1788. Flora Caroliniana. London. <https://www.biodiversitylibrary.org/page/10001187#page/126/mode/1up>
- Zona, S. 1990. A monograph of *Sabal* (Arecaceae: Coryphoideae). *Aliso* 12(4): 583–666.
- Zona, S. 1992. Distribution update: *Sabal domingensis* in Cuba. *Principes* 36(1): 34–35.

Celio E. Moya López is an Associate Researcher at the Botanical Garden of Havana, Cuba, "Quinta de los Molinos," and specializes in the biology of Cuban and Caribbean palms. celio.moya@gmail.com <https://orcid.org/0000-0002-5033-483X>

Donald R. Hodel is the emeritus landscape horticulture advisor for the University of California Cooperative Extension in Los Angeles and specializes in the selection and management of palms and trees. drhodel@ucanr.edu

Text © 2026 by C. E. Moya López and D. R. Hodel.

Photographs © 2026 by the identified photographer and/or institutions.

Publication date: 1 July 2026.

PalmArbor: <https://ucanr.edu/site/hodel-palms-and-trees/palmarbor>

ISSN 269083245

Editor-In-Chief: Donald R. Hodel drhodel@ucanr.edu

Hodel Palms and Trees: <https://ucanr.edu/site/hodel-palms-and-trees>