



California Forest Management Task Force

Coordinating the state's investments in
forest management, wood utilization,
and workforce development

Consensus: The issue goes beyond tree mortality

- Fire on the Mountain: Rethinking Forest Management in the Sierra Nevada
– Little Hoover Commission
- Improving the Health of California's Headwater Forests
– Public Policy Institute of California
- Improving California's Forest & Watershed Management – Legislative Analyst's Office
- Forest Health Initiative
-- CA Forestry Association





The “New Normal”

This is the new normal, and this could be something that happens every year or every few years.

– Gov. Jerry Brown December 2017

Executive Order B-52-18

May 2018

“WHEREAS the Forest Carbon Plan has been developed by state agencies to provide consensus forest practices that will achieve resilient forests that can withstand and adapt to wildfire, drought and a changing climate, safeguard the state's water supply, and ensure the state's forests operate as a carbon sink.”

California Forest Carbon Plan

Managing Our Forest Landscapes in a Changing Climate



May 2018



CalEPA
California Environmental
Protection Agency

2018
Legislative
Direction to
Task Force

AB 901: Requires the Task Force to provide recommendations on streamlining the Forest Practices Act by July 1, 2020

AB 1981: Work with CalEPA and CAL FIRE to reduce GHG emissions through application of compost on working lands

AB 2019: Develop recommendations with the Department of Insurance on an insurance pool for prescribed burn managers

Top 20 Most Destructive California Wildfires

	FIRE NAME (CAUSE)	DATE	COUNTY	ACRES	STRUCTURES	DEATHS
→	1 CAMP FIRE (<i>Under Investigation</i>)	November 2018	Butte County	153,336	18,804	85
→	2 TUBBS (<i>Electrical</i>)	October 2017	Napa & Sonoma	36,807	5,636	22
	3 TUNNEL - Oakland Hills (<i>Rekindle</i>)	October 1991	Alameda	1,600	2,900	25
	4 CEDAR (<i>Human Related</i>)	October 2003	San Diego	273,246	2,820	15
→	5 VALLEY (<i>Electrical</i>)	September 2015	Lake, Napa & Sonoma	76,067	1,955	4
	6 WITCH (<i>Powerlines</i>)	October 2007	San Diego	197,990	1,650	2
→	7 WOOLSEY (<i>Under Investigation</i>)	November 2018	Ventura	96,949	1,643	3
→	8 CARR (<i>Human Related</i>)	July 2018	Shasta County, Trinity County	229,651	1,614	8
→	9 NUNS (<i>Powerline</i>)	October 2017	Sonoma	54,382	1,355	3
→	10 THOMAS (<i>Under Investigation</i>)	December 2017	Ventura & Santa Barbara	281,893	1,063	2
	11 OLD (<i>Human Related</i>)	October 2003	San Bernardino	91,281	1,003	6
	12 JONES (<i>Undetermined</i>)	October 1999	Shasta	26,200	954	1
→	13 BUTTE (<i>Powerlines</i>)	September 2015	Amador & Calaveras	70,868	921	2
→	14 ATLAS (<i>Powerline</i>)	October 2017	Napa & Solano	51,624	783	6
	15 PAINT (<i>Arson</i>)	June 1990	Santa Barbara	4,900	641	1
	16 FOUNTAIN (<i>Arson</i>)	August 1992	Shasta	63,960	636	0
	17 SAYRE (<i>Misc.</i>)	November 2008	Los Angeles	11,262	604	0
	18 CITY OF BERKELEY (<i>Powerlines</i>)	September 1923	Alameda	130	584	0
	19 HARRIS (<i>Undetermined</i>)	October 2007	San Diego	90,440	548	8
→	20 REDWOOD VALLEY (<i>Powerline</i>)	October 2017	Mendocino	36,523	546	9

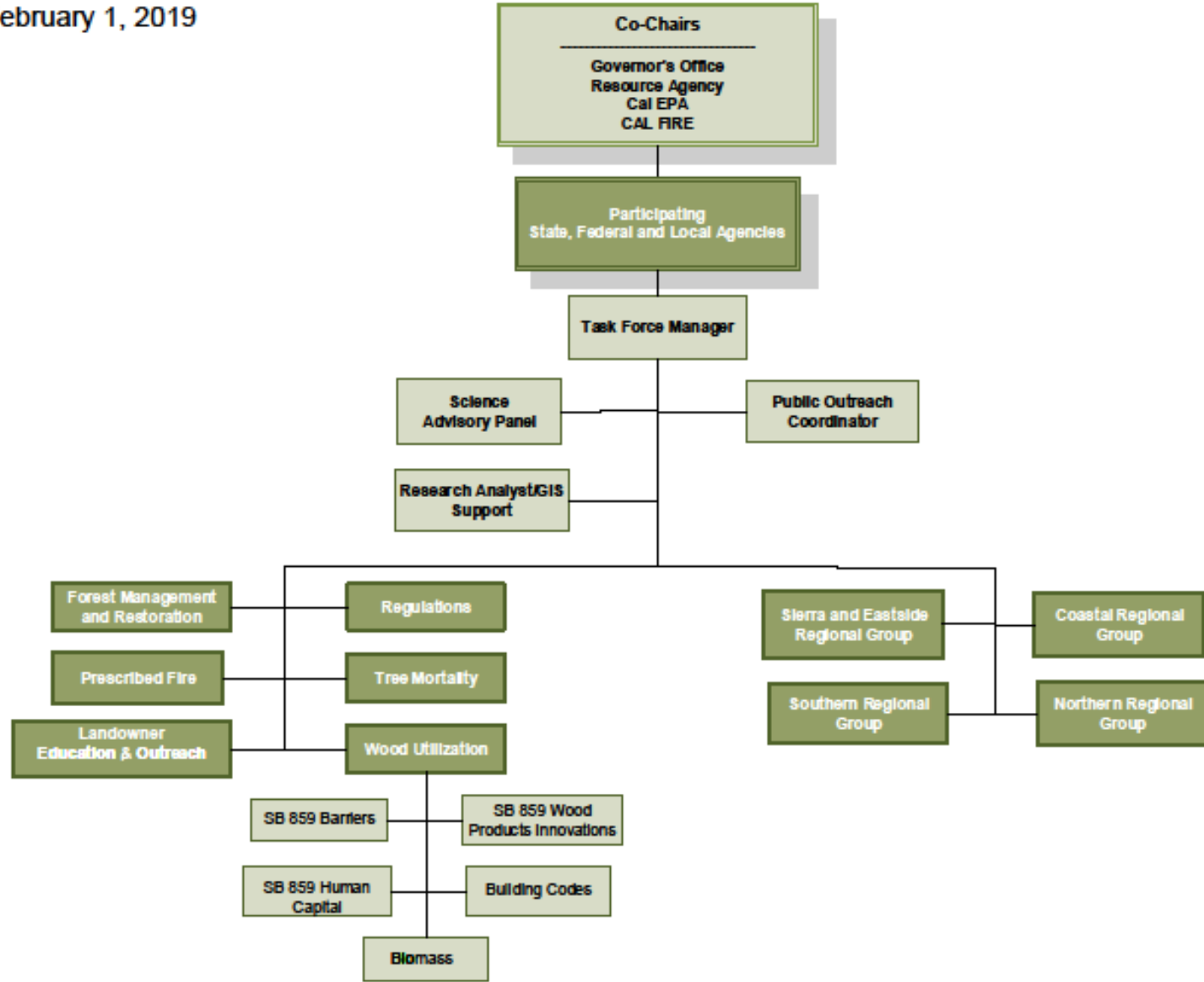


*"Structures" include homes, outbuildings (barns, garages, sheds, etc) and commercial properties destroyed.

**This list does not include fire jurisdiction. These are the Top 20 regardless of whether they were state, federal, or local responsibility.

Forest Management Task Force

February 1, 2019



Objectives of the FMTF




- Encourage coordination
- Facilitate forest health, prescribed fire, and fuel reduction activities
- Develop regional strategies
- Harmonize cross-jurisdictional regulatory & permitting requirements
- Provide consistent and coordinated messaging
- Measure progress and monitor outcomes



Increasing Capacity

State Investments in Forests

- California Climate Investments
 - Forest Health Grants
 - Fire Prevention Grants
- Sierra Nevada Conservancy
 - Watershed Improvement Program
 - Prop 1 and Prop 68 Grants
- Department of Conservation
 - Watershed Coordinators
 - Regional Forest and Fire Capacity Program
- Regional Conservation Partnership Program Grant
 - NRCS EQIP funding
 - RCD Forest Advisors



CALIFORNIA FOREST PRACTICE RULES

2018

Reducing Barriers Regulatory Relief

- Synchronize and expedite regulatory review
 - CalTREES: Single review period for CAL FIRE, DFW, and RWQCB permits
 - Improving regulatory interactions
- Small Landowner Exemption
- Exemption Consolidation
- Expanded allowance under Exemptions
 - Road construction
 - Larger diameter trees
- Multiple landowner NTMP & WFMP
- Consistent permitting across National Forests



Increasing Pace and Scale

Forest Management

- Prescribed Fire
 - Increased burn days and projections
 - Online clearinghouse for planning and permitting
 - “Burn Boss” certification
 - Liability insurance
- Small, Private Lands
 - Exemptions
 - CA Forest Improvement Program
 - Environmental
- Federal Lands
 - Good Neighbor Authority
 - Master Stewardship Agreement
 - Landscape collaboratives



Wood Utilization

Supporting Rural Development

- Rural Economic Development Steering Committee
 - Reducing Barriers
 - Human Capital
 - Innovation
- Building Codes
 - Mass timber for large buildings
 - Mass timber grant competition
- Biomass Working Group
 - BioMAT
 - BioRAM



Will we be Prepared for the Next Mortality Event?

- Cooperative relationships across Federal, State, and Local Agencies
 - Will increased forest management sustain these relationships over time?
- Non-traditional partners with new expertise
 - Counties/Local Agencies
 - Caltrans
 - Utilities
- Local capacity
 - State is investing heavily in people and projects throughout the state
 - Will this still be in place at next mortality event?
- Wildfire impacts to communities change acceptable impacts
 - Public support for prescribed fire, fuel reduction, and commercial forest management is increasing
 - These are pre-planned, mitigated and permitted activities.



Kevin Conway
Forest Management Task Force Manager

Kevin.Conway@fire.ca.gov

(530) 339-0286

www.CAForestTaskForce.org

