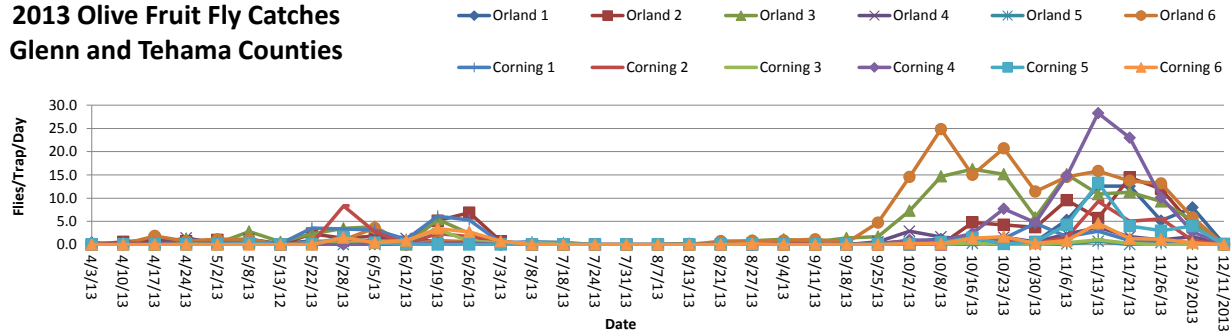


UCCE Glenn County - Olive Fruit Fly Populations for Glenn and Tehama County

2013 Olive Fruit Fly Catches Glenn and Tehama Counties



PLEASE READ NOTES BELOW - **PLEASE READ NOTES BELOW**

Block	Trap(s)	3-Apr		10-Apr		17-Apr		24-Apr		2-May		8-May		13-May		22-May		28-May		5-Jun		12-Jun		TOT/YR	
		M	F	M	F	M	F	M	F	M	F	M	F	M	F	M	F	M	F	M	F	M	F	M	F
Orland 1-Untreated	Trap 1	1	2	1	0	2	0	0	0	2	2	5	2	0	1	4	3	1	1	5	2	0	2	21	15
Glenn County Fairgrounds																									
Orland 2-Untreated	Trap 1	0	0	3	1	4	3	4	1	6	2	2	0	0	0	11	10	3	5	7	6	1	3	41	31
Road 200 & Road E																									
Orland 3-Untreated	Trap 1	0	2	1	1	0	0	7	2	2	0	10	7	2	1	13	8	13	8	17	10	0	0	65	39
SE Orland N and 16																									
Orland 4-Untreated	Trap 1	0	0	0	0	1	0	8	2	1	1	3	4	0	0	0	1	2	2	4	1	3	6	22	17
NE Orland Rd 12 and N																									
Orland 5-Treated	Trap 1	0	1	0	0	1	0	2	0	1	0	0	2	0	0	1	0	0	0	0	0	0	0	5	3
Road 24 and N																									
Orland 6 - Untreated	Trap 1	1	0	1	0	8	5	3	2	7	2	1	6	0	0	2	3	4	2	14	11	0	0	41	31
Hwy 99W and Road 18																									
Corning 1 - Treated	Trap 1	0	0	0	0	2	0	2	0	3	1	2	0	1	0	20	12	17	3	14	8	5	3	66	27
Northbound I-5 Reststop																									
Corning 2 - Treated	Trap 1	0	0	3	0	0	1	1	0	0	0	0	0	0	0	1	1	35	15	11	8	1	0	52	25
Fig Lane and Houghton																									
Corning 3 - Treated	Trap 1	0	0	0	0	0	0	1	0	0	1	0	0	0	0	0	0	2	0	3	2	4	1	10	4
Barham and Sampson																									
Corning 4 - Untreated	Trap 1	0	0	0	0	0	1	0	0	0	1	0	0	0	0	0	0	0	0	0	1	0	0	0	3
Sac. River - Kopta Road																									
Corning 5-Treated	Trap 1	0	0	0	0	0	0	0	0	0	0	0	2	0	0	1	0	5	5	2	1	1	0	9	8
Viola Ave. & Orchard Ave.																									
Corning 6-Treated	Trap 1	0	0	0	0	0	0	0	0	0	0	0	0	0	0	0	4	5	1	2	2	4	7	11	
Dora Ave. & Marguerite Ave.																									
Total		2	5	9	2	18	10	28	7	22	10	23	23	3	2	53	38	86	46	78	52	17	19	339	214

NOTES: **Traps Placed 3/27/13

**UCCE Glenn County - Olive Fruit Fly Populations
for Glenn and Tehama County**

PLEASE READ NOTE BELOW - **PLEASE READ NOTE BELOW**

Block	Trap(s)	19-Jun		26-Jun		3-Jul		8-Jul		17-Jul		24-Jul		31-Jul		7-Aug		13-Aug		21-Aug		27-Aug		TOT/YR	
		M	F	M	F	M	F	M	F	M	F	M	F	M	F	M	F	M	F	M	F	M	F	M	F
Orland 1-Untreated	Trap 1	2	3	1	2	0	0	0	0	0	0	0	0	0	0	0	0	1	0	1	0	0	2	26	22
Glenn County Fairgrounds																									
Orland 2-Untreated	Trap 1	25	11	28	20	4	1	0	0	0	0	0	0	0	0	0	0	0	0	0	0	0	98	63	
Road 200 & Road E																									
Orland 3-Untreated	Trap 1	17	21	7	10	2	1	0	0	0	0	0	0	0	0	0	1	0	1	1	4	1	97	73	
SE Orland N and 16																									
Orland 4-Untreated	Trap 1	3	1	0	4	0	1	0	0	0	0	0	0	0	0	0	0	0	0	0	0	0	25	23	
NE Orland Rd 12 and N																									
Orland 5-Treated	Trap 1	0	0	0	0	0	0	0	0	0	0	0	0	0	0	0	0	0	0	0	1	1	6	4	
Road 24 and N																									
Orland 6 - Untreated	Trap 1	3	3	2	2	0	0	0	0	0	0	0	0	0	0	0	0	0	1	5	3	2	50	43	
Hwy 99W and Road 18																									
Corning 1 - Treated	Trap 1	25	18	20	17	3	0	3	0	2	2	0	0	0	0	0	0	0	0	0	0	0	119	64	
Northbound I-5 Reststop																									
Corning 2 - Treated	Trap 1	12	5	8	4	2	2	0	0	0	0	0	0	0	0	0	0	0	0	0	0	0	74	36	
Fig Lane and Houghton																									
Corning 3 - Treated	Trap 1	13	10	2	3	2	1	1	1	0	2	0	0	0	0	0	0	0	0	0	0	0	28	21	
Barham and Sampson																									
Corning 4 - Untreated	Trap 1	1	2	1	2	0	0	0	0	0	0	0	0	0	0	0	0	0	0	0	0	0	2	7	
Sac. River - Kopta Road																									
Corning 5-Treated	Trap 1	0	0	0	0	0	0	0	0	0	0	0	0	0	0	0	0	0	0	0	0	0	9	8	
Viola Ave. & Orchard Ave.																									
Corning 6-Treated	Trap 1	14	10	9	10	2	3	0	0	0	0	0	0	0	0	0	0	0	0	0	0	1	32	35	
Dora Ave. & Marguerite Ave.																									
Total		115	84	78	74	15	9	4	1	2	4	0	0	0	0	0	0	2	0	3	6	8	7	566	399

NOTES: **Traps Placed 3/27/13

**UCCE Glenn County - Olive Fruit Fly Populations
for Glenn and Tehama County**

PLEASE READ NOTE BELOW - **PLEASE READ NOTE BELOW**

Block	Trap(s)	4-Sep		11-Sep		18-Sep		25-Sep		2-Oct		8-Oct		16-Oct		23-Oct		30-Oct		6-Nov		13-Nov		TOT/YR	
		M	F	M	F	M	F	M	F	M	F	M	F	M	F	M	F	M	F	M	F	M	F	M	F
Orland 1-Untreated	Trap 1	0	1	0	0	0	0	0	2	1	4	5	2	7	4	5	2	2	2	21	16	61	27	128	82
Glenn County Fairgrounds																									
Orland 2-Untreated	Trap 1	0	0	0	0	0	0	0	0	0	0	0	0	23	15	13	17	8	18	34	33	21	19	197	165
Road 200 & Road E																									
Orland 3-Untreated	Trap 1	6	3	2	2	8	2	7	5	21	30	55	33	69	61	61	45	27	14	63	43	37	39	453	350
SE Orland N and 16																									
Orland 4-Untreated	Trap 1	0	0	0	0	0	0	4	0	13	7	6	4	4	4	5	6	2	2	9	7	18	8	86	61
NE Orland Rd 12 and N																									
Orland 5-Treated	Trap 1	0	1	0	0	0	0	0	0	1	1	1	2	2	0	0	0	0	0	1	0	2	3	13	11
Road 24 and N																									
Orland 6 - Untreated	Trap 1	2	5	6	2	2	1	17	16	53	49	102	47	74	46	72	73	44	36	58	44	66	45	546	407
Hwy 99W and Road 18																									
Corning 1 - Treated	Trap 1	0	0	0	0	0	0	0	0	2	0	1	0	0	0	4	5	2	0	9	3	10	10	147	82
Northbound I-5 Reststop																									
Corning 2 - Treated	Trap 1	0	2	0	1	0	0	1	1	2	3	1	4	0	0	3	3	1	1	6	5	45	20	133	76
Fig Lane and Houghton																									
Corning 3 - Treated	Trap 1	0	0	0	0	0	0	0	0	0	1	1	0	1	1	1	0	0	0	2	1	5	2	38	26
Barham and Sampson																									
Corning 4 - Untreated	Trap 1	0	0	0	0	0	0	0	0	4	3	2	3	14	10	33	21	17	16	58	45	117	81	247	186
Sac. River - Kopta Road																									
Corning 5-Treated	Trap 1	0	0	0	0	0	0	0	1	0	0	2	1	7	5	0	1	2	2	20	10	61	32	101	60
Viola Ave. & Orchard Ave.																									
Corning 6-Treated	Trap 1	0	0	0	0	0	0	0	0	2	0	1	0	6	5	6	6	2	0	3	3	17	15	69	64
Dora Ave. & Marguerite Ave.																									
Total		8	12	8	5	10	3	29	25	99	98	177	96	207	151	203	179	107	91	284	210	460	301	2158	1570

NOTES: **Traps Placed 3/27/13

UCCE Glenn County - Olive Fruit Fly Populations for Glenn and Tehama County

NOTES: **Traps Placed 3/27/13
Traps Removed 12/11/13

Block	Trap(s)	21-Nov		26-Nov		3-Dec		11-Dec												TOT/YR		
		M	F	M	F	M	F	M	F	M	F	M	F	M	F	M	F	M	F	M	F	
Orland 1-Untreated	Trap 1	56	32	24	12	41	15	1	0												184	114
Glenn County Fairgrounds																						
Orland 2-Untreated	Trap 1	48	53	44	40	18	11	0	1												245	218
Road 200 & Road E																						
Orland 3-Untreated	Trap 1	56	23	45	20	26	10	0	0												509	373
SE Orland N and 16																						
Orland 4-Untreated	Trap 1	8	4	4	3	8	4	0	0												94	65
NE Orland Rd 12 and N																						
Orland 5-Treated	Trap 1	0	0	3	0	1	0	0	0												13	11
Road 24 and N																						
Orland 6 - Untreated	Trap 1	62	34	55	37	29	12	0	0												608	441
Hwy 99W and Road 18																						
Corning 1 - Treated	Trap 1	4	2	3	1	0	0	0	0												151	84
Northbound I-5 Reststop																						
Corning 2 - Treated	Trap 1	24	11	24	15	4	2	0	0												157	87
Fig Lane and Houghton																						
Corning 3 - Treated	Trap 1	1	1	0	0	0	0	0	0												39	27
Barham and Sampson																						
Corning 4 - Untreated	Trap 1	95	66	45	26	12	7	0	0												342	252
Sac. River - Kopta Road																						
Corning 5-Treated	Trap 1	17	11	2	1	3	0	0	0												118	71
Viola Ave. & Orchard Ave.																						
Corning 6-Treated	Trap 1	3	6	5	3	2	1	0	0												72	70
Dora Ave. & Marguerite Ave.																						
Total		374	243	254	158	144	62	1	1	0	0	0	0	0	0	0	0	0	0	0	2532	1813