

2019-2020 4-H FAIR REQUIREMENTS TO EXHIBIT AT THE GLENN COUNTY FAIR



University of California
Agriculture and Natural Resources

The Glenn County 4-H Council annually reviews and sets fair requirements. For the 2019-2020 program year, the requirements to be met in order to be eligible to exhibit and participate at fair are:

PRIMARY MEMBERS

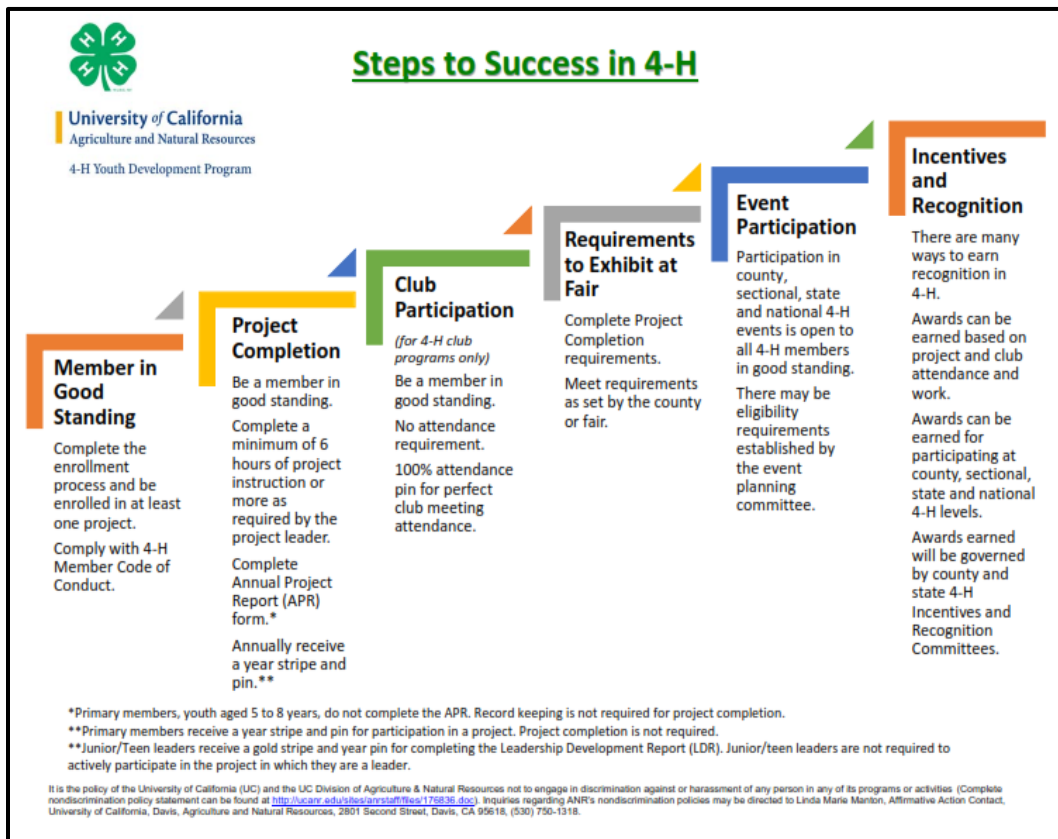
1. Follow Glenn County Fair requirements and rules.

ANYTHING BUT ANIMALS/STILL EXHIBIT/DUMMY ROPING PROJECT MEMBERS

1. Follow Glenn County Fair requirements and rules.
2. Project Completion - Be a member in good standing. Complete a minimum of six hours of 4-H project instruction or more as required by the project leader in project area before the Fair. At minimum, complete and turn in the Annual Project Report (APR) form by the record book deadline to club Key Leader. (See [Steps to Success in 4-H](#))

LIVESTOCK/EQUINE/DOG PROJECT MEMBERS (ALL ANIMALS)

1. Follow Glenn County Fair requirements and rules.
2. You must be enrolled in 4-H by **Monday, November 4, 2019**.
3. Project Completion - Be a member in good standing. Complete a minimum of six hours of 4-H project instruction or more as required by the project leader in project area before the Fair weigh-in date(s). At minimum, complete and turn in the Annual Project Report (APR) form by the record book deadline to club Key Leader. (See [Steps to Success in 4-H](#))
4. Attend six out of the eight of your community club's monthly meetings.
5. Give a presentation at County Presentation Day, a Club Meeting, a Project Meeting, or a qualifying county event. You may also participate in the County Interview Contest event to complete the presentation requirement. You may also be an Evaluator or Room Coordinator at County/Sectional Presentation Day. To qualify as an Evaluator, member must have given one gold presentation in the past and must be a Senior Member. To be a Room Coordinator, member must have given one gold presentation in the past and must be 13 years or older as of December 31, 2019. Presentation Form (club or project level) due May 4, 2020 to the UCCE Office. (If member gave a presentation at the County Presentation Day, a Presentation Form is not required.)



The project leader has the right to refuse signing the Glenn County Fair entries if the requirements have not been met by the member.