

# Goldspotted Oak Borer and Oak Mortality

## Quarterly Situation Report

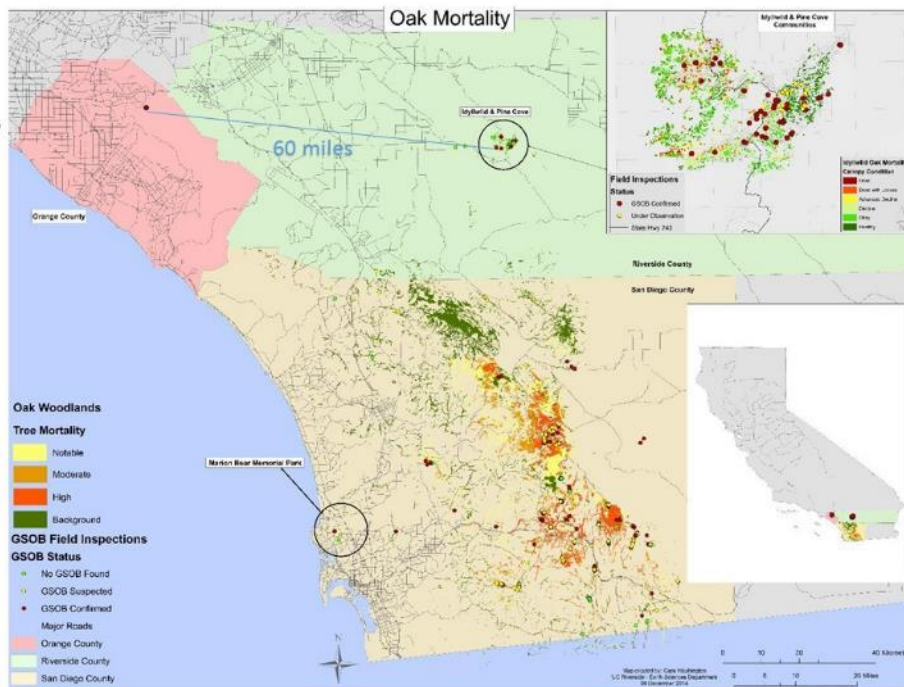
### October 1 through December 31, 2014

#### GSOB Discovered in Orange County

In mid-December, Dr. Tom Coleman (USFS-FHP) visited several sites in Orange County yesterday with staff from The Nature Conservancy and Irvine Ranch Conservancy. Zach Principe (TNC) had told Tom about oak mortality at several sites and wanted him to look at the cause. They visited three sites east of Orange and found GSOB at one site, Weir Canyon. This is quite a jump from the San Diego Co population and the only Orange County find to date. Weir Canyon is near Irvine Regional Park, but there is no camping allowed there; however, infested firewood may have been brought to homes in neighborhoods within close proximity to the canyon.

The infestation looks fairly recent (<5 yrs) because older GSOB-caused tree mortality was not observed in the initial survey. Approximately 30 trees had evidence of injury during (exit holes and galleries) during a quick survey. Several larvae were sampled from a couple of trees and delivered to Dr. Richard Stouthamer (UCR) who verified the species as *Agrilus auroguttatus* (GSOB) with genetic analyses.

Weir Canyon GSOB infestation in Orange County is approximately 60 air miles west of the Idyllwild infestation in Riverside County and 65 miles from the closest known San Diego County infestation at Mount Palomar. There is no nearby overnight camping but homes are within a mile of this new infestation.



A coalition of partners is quickly forming in Orange County to respond to the discovery including UC Cooperative Extension, Irvine Ranch Conservancy, Orange County Parks, Cleveland National Forest, CAL FIRE, Orange County Fire Authority, Orange County Agricultural Commissioner and others. Additional surveys are being conducted to determine the extent of the infestation.

## San Jacinto Mountains (Riverside County) Update

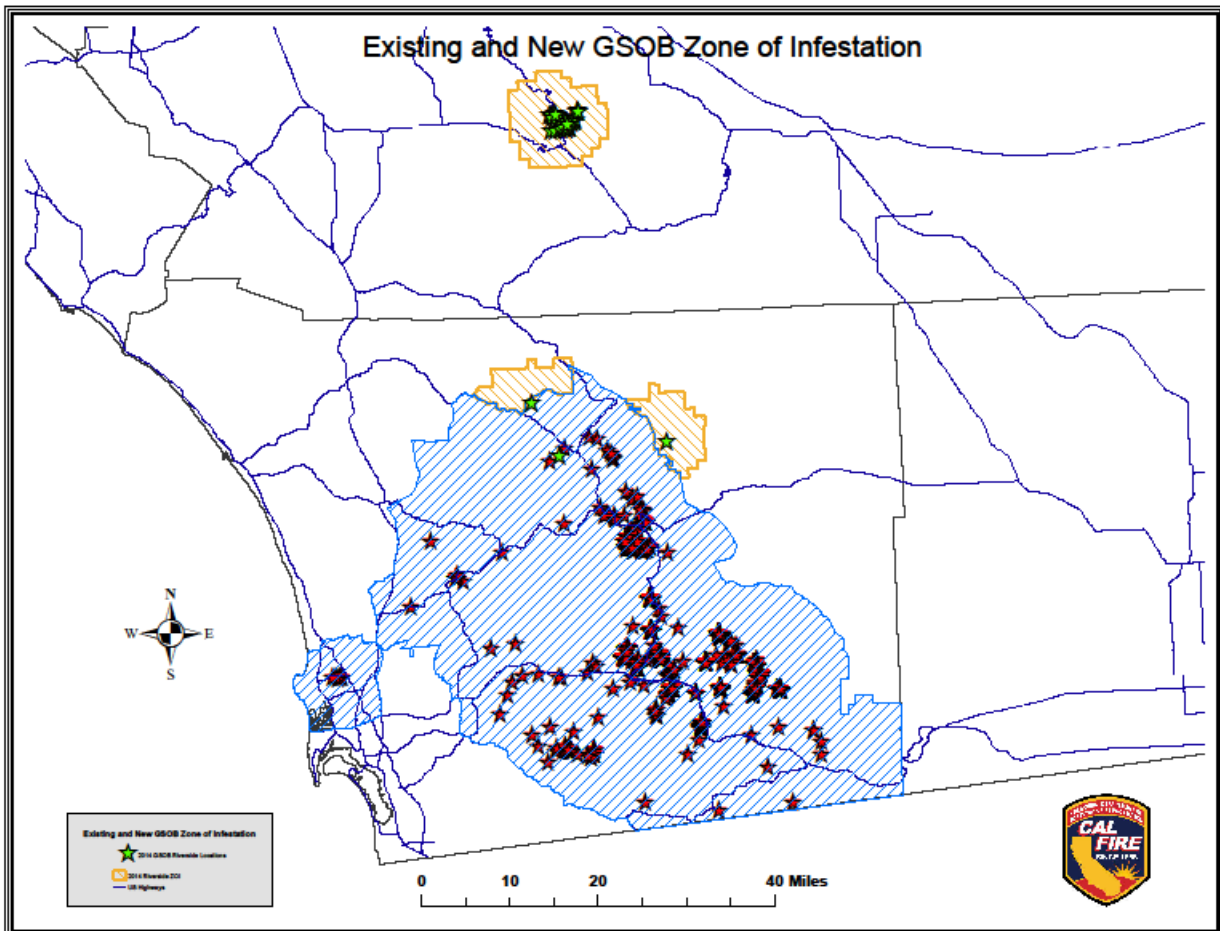
Due to winter dormancy of the California black oaks, oak tree surveys did not take place so no additional trees were discovered during the quarter. Surveys by volunteers will resume at spring leaf out.

## San Diego County Update

We continue to receive reports about significant GSOB problems through much of San Diego County. Tom Coleman and Cleveland National Forest staff conducted surveys around Mount Palomar and discovered GSOB infestation on the east and south sides of the mountain at lower elevations.

## Zone Of Infestation

On December 10<sup>th</sup>, the California Board of Forestry and Fire Protection unanimously approved the expansion of the GSOB ZOI to include new areas of infestation in San Diego County (Palomar and Ranchita) as well as the Riverside County infested area of Pine Cove and Idyllwild.



**William Heise County Park (Julian CA) for Oct. 1 to Dec. 31, 2014**

| <u>Location of following</u> | <u>New GSOB trees</u> | <u>GSOB trees removed</u> | <u>Other GSOB concerns</u>  |
|------------------------------|-----------------------|---------------------------|---|
| Picnic Area # 1              |                       | 7                         | Continued crown thinning, coast live & black oak mortality around cabins    |
| Entrance Drainage            |                       |                           | Continued crown thinning, coast live and black oak mortality                |
| RV loop                      |                       |                           | Canyon Oaks appear to have new crown thinning. Large trees still holding on |
| Cabin Loop                   |                       | 5                         | Coast live oaks showing thinning and stress on perimeter of area.           |
| Volunteer loop               |                       | 9                         | Canyon oaks showing signs of infestation, continued thinning throughout.    |
| Middle Loop                  |                       | 18                        | Continued oak mortality, mainly Coast Live.                                 |
| YC1/Pond                     |                       | 25                        | Canyon oaks still showing signs of infestation and crown thinning           |
| Upper loop                   |                       | 14                        | Coast live oaks showing thinning and stress on perimeter of area.           |
| Julian Estates               |                       |                           |   |
| Ranger residence # 1         |                       |                           |   |
| Ranger residence # 2         |                       |                           | Huge area of mortality working outwards from residence.                     |

**Dos Picos Regional Park - District 3  
All GSOB Trees removed Oct. 1 to Dec. 31, 2014**

|                    | <u>* New GSOB Trees</u> | <u>Total # of Trees Removed Due to GSOB</u> |
|--------------------|-------------------------|---|
| Campground         | 22                      | 60  |
| Day Use, Area 1    | 0                       | 2   |
| Day Use, Area 2    | 5                       | 7   |
| Day Use, Area 3    | 8                       | 5   |
| Along Service Road | 5                       | 5   |
| <b>Total</b>       | <b>40</b>               | <b>79</b>                                   |

\* New GSOB trees are only trees discovered this quarter, pending removal.

## GSOB Training and Meetings

|            |  |  |                                     |
|------------|--|--|-------------------------------------|
| 12/20/2014 | Customs Training   | San Diego  | Tracy<br>Ellis                      |
| 12/10/2014 | Board of Forestry<br>Presentation - Zone of<br>Infestation Expansion   | Sacramento   | Gregg<br>Bratcher<br>Kim<br>Corella |
| 11/17/2014 | GSOB Volunteer<br>Training Idyllwild                                   | Idyllwild  | Kevin<br>Turner                     |
| 11/16/2014 | Mount Palomar<br>Homeowners<br>Presentation                            | Mount Palomar  | Mike<br>Puzzo                       |
| 10/28/2014 | Idyllwild 2014 Surveys<br>Debriefing                                   | Mountain<br>Resource Center                                  | Kevin<br>Turner                     |
| 10/23/2014 | San Luis Obispo Oak<br>Pest ID Workshop                                | San Luis Obispo<br>UC Cooperative<br>Extension<br>Auditorium | Kevin<br>Turner<br>Kim<br>Corella   |
| 10/14/2014 | Town Hall Meeting  | Oak Tree Country<br>Club, Tehachapi,<br>CA                   | Kim<br>Corella                      |
| 9/30/2014  | South Bay Arborists<br>Urban Forest Insects<br>and Disease<br>Workshop | Woodside CA  | Katie<br>Harrell                    |
| 9/16/2014  | CA State Parks Guild<br>meeting  | Cuyamaca Rancho<br>State Park                                | Kevin<br>Turner                     |
| 9/9/2014   | GSOB Interpretive<br>Presentations<br>Planning Meeting                 | San Diego  | Kevin<br>Turner<br>Jan<br>Gonzales  |

## GSOB Outreach and Education Activities – Jan Gonzales UCCE San Diego

- Participated in the UC ANR 7<sup>th</sup> Oak Symposium, November 4-6, 2015; delivered presentation, “*Outreach education to counter the spread of Goldspotted Oak Borer, an invasive threat to California oak woodlands,*” and moderated a session of presentations on sudden oak death. Assisted with coordinating interviews on GSOB research with Jeanette Kazmiercza, graduate student in radio journalism at University of Southern California.
- Coordinated and/or presented with the GSOB display for events:
  - Ramona Fire Awareness open house event with the West End Ramona Fire Safe Council and Cal Fire, October 18
  - Palomar Mountain State Park, November 16
- Coordinated GSOB field tour and training in Santa Ysabel for the San Diego Zoo graduate program, October 12.
- Consulted with San Diego County Department of Public Works and reviewed their wood management plan for oak trees removed during San Vicente road expansion project in the Ramona area.
- Coordinated graphic design updates to Oaks at Risk handout.
- Discussed GSOB monitoring program for youth and arranged for program planning meeting with Kate Bennett, Program Coordinator for the Outdoor Education Program at YMCA Camp Marston.
- Continued development of GSOB Interpreter training package.
- Assisted West End Ramona Fire Safe Council in obtaining maps of GSOB infestation and threatened oak woodlands for grant proposal.
- Adapted the GSOB handout, “*The Goldspotted Oak Borer: A Threat to Oak Trees and You*” for San Diego County Department of Public Works staff.
- Responded to 9 phone calls and/or email inquires regarding GSOB.
- Distributed handout materials:
  - 750 GSOB trifold brochures
  - 500 UCIPM GSOB Pest Note pamphlet
  - 100 GSOB ID cards
  - 100 Don’t Move Firewood
  - 100 GSOB Firewood Advisory handouts
- Participated in 2 GSOB meetings/conference calls with the GSOB Education and Outreach Committee.
- Corrected links on website: [www.GSOB.org](http://www.GSOB.org)

## “Buy It Where You Burn It” Roadside Signs

In the spring of 2014, the California Firewood Task Force made available “year-end funds” to the GSOB Outreach Committee for a much awaited roadside sign project in Southern California. The committee had conceived of the idea of using roadside signs to warn the populace about the danger of moving GSOB-infested firewood in light of the fact that there was little prospect of an oak firewood quarantine. The recent surge in GSOB-caused mortality in San Diego County combined and the discovery of GSOB in Riverside County increased the urgency of getting signs installed.



With funding in hand, the committee developed a plan on sign design, placement locations, permitting, procurement, and sign installation. Installations have occurred in Cuyamaca State Park along Highway 79, Highway 76 near Mount Palomar, Highway 74 leading to Idyllwild, Mission Trails Regional Park in San Diego and four locations on the Descanso Ranger District of the Cleveland National Forest. We’ve just received additional funding to produce and erect more signs which will see some subtle redesign.



Please direct any corrections, questions or comments about the quarterly report to Kevin Turner at [kevint@ucr.edu](mailto:kevint@ucr.edu) . We welcome your future contributions to the report for any activities or information related to GSOB. For submitting information for the upcoming January through March 2015 quarterly report, please provide your input to me by close of business on April 8th. A reminder will be sent out through Collaborative Tools at the end of March.