

Table 1. Treatment efficacy and yield effects in a cv. Vina walnut orchard in a walnut blight recovery program.*

Treatment	Rate (MEC/A)**	Disease Incidence (%)	Yield (tons/A)
Control	---	36.7	---
Kocide 2000-Manex	2.3 lb	9.6	---
Kocide 3000-Manex	1.1 lb	5.4	---
Grower Standard***	---	---	2.74
Recovery Program	---	---	2.57
2005	---	80.3	0.89
2006	---	7.5	2.64

* - Disease incidence was 80.3% in 2005. In 2006, nine weekly applications of Kocide-Manex were done in a walnut blight recovery program.

** - Metallic copper equivalent (MEC).

*** - Six-year average prior to 2005 was 2.56 tons/A.

Fig. 1. Efficacy of new bactericide treatments on cv. Chico walnut with simulated rain applied - Fresno Co. 2006 -

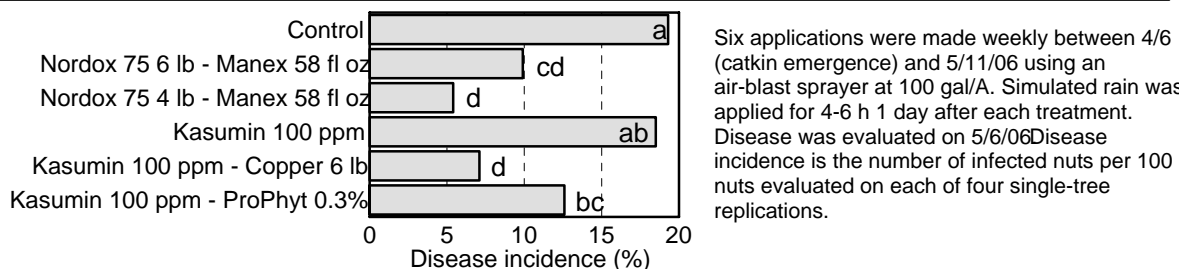


Fig. 2 Efficacy of new bactericide treatments on cv. Hartley walnut under natural rain conditions - Fresno Co. 2006 -

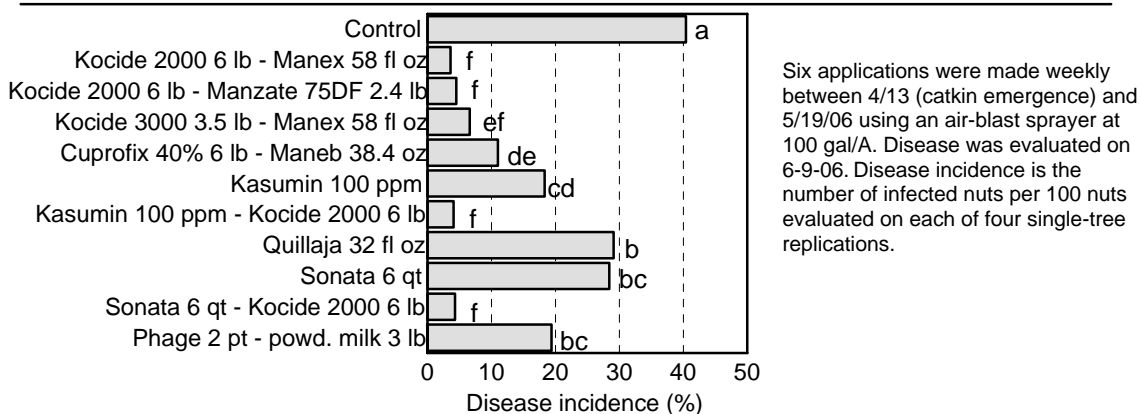


Fig. 3. Efficacy of new bactericide treatments on cv. Hartley walnut with simulated rain applied
- Solano Co. 2006 -

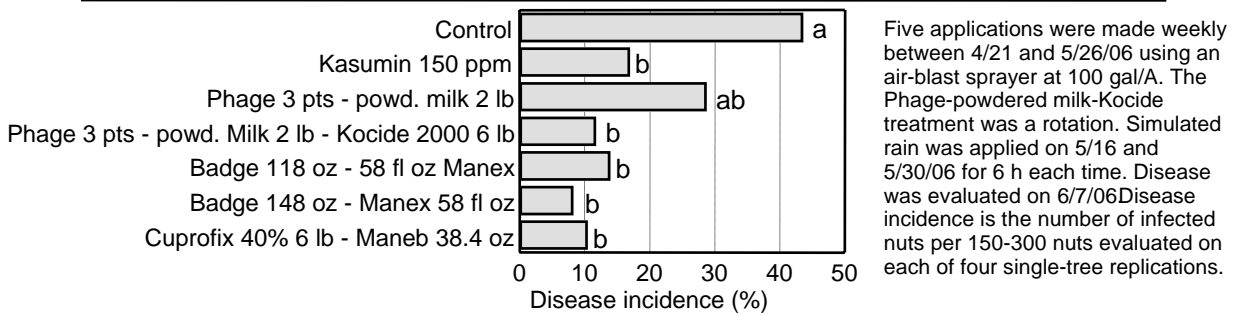


Fig. 4. Efficacy of new bactericide treatments on cv. Hartley walnut under natural rain conditions
- Solano Co. 2006 -

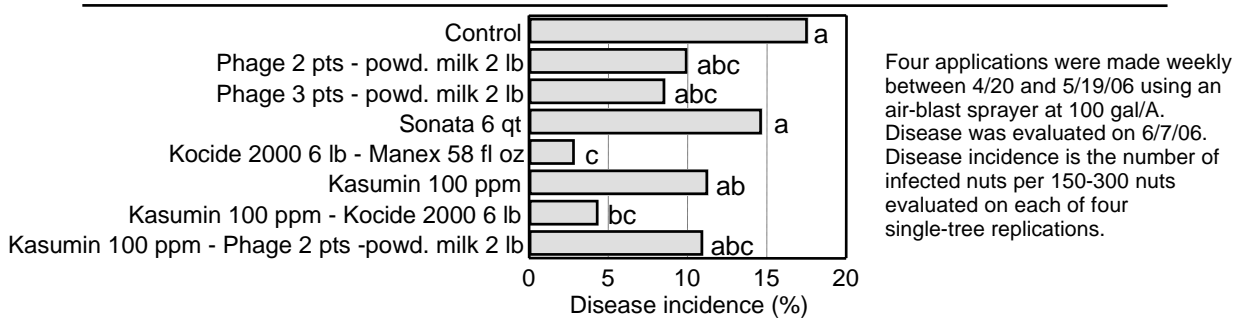


Fig. 5. Efficacy of new bactericide treatments on cv. Vina walnut under natural rain conditions
- Yuba-Sutter Co. 2006 -

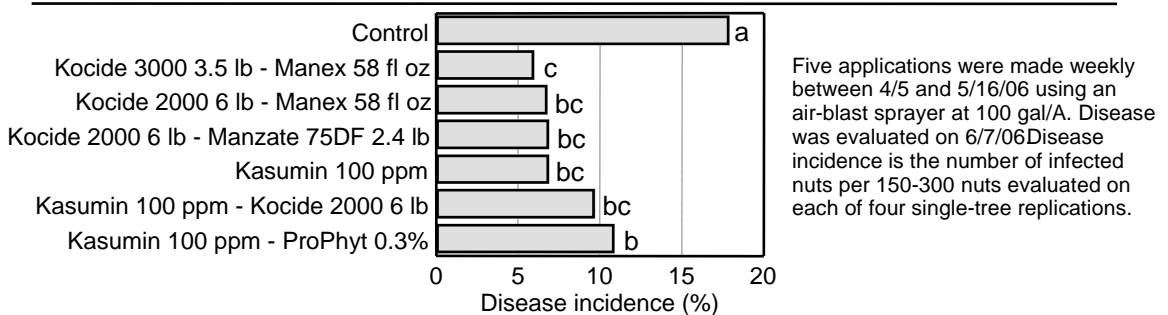


Fig. 6. Efficacy of new bactericide treatments on cv. Vina walnut under natural rain conditions
- Butte Co. 2006 -

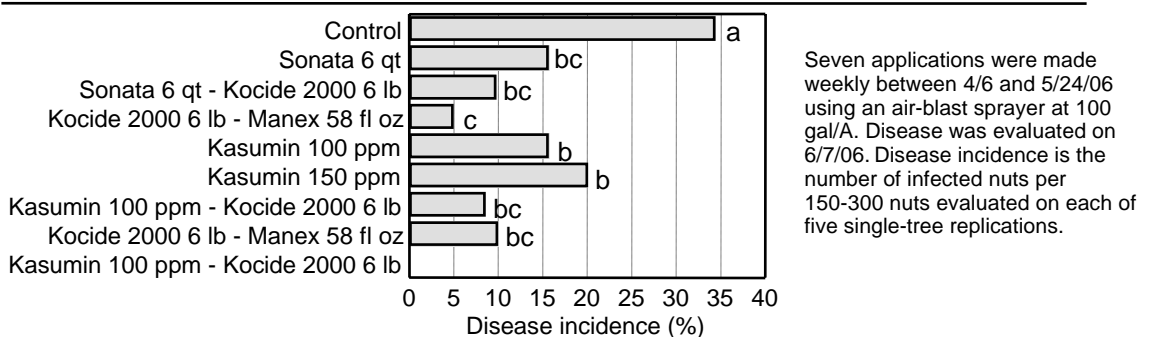


Fig. 7 Weather conditions, XanthoCast values, and disease incidence
 - Trial in Durham, Butte Co., 2006 -

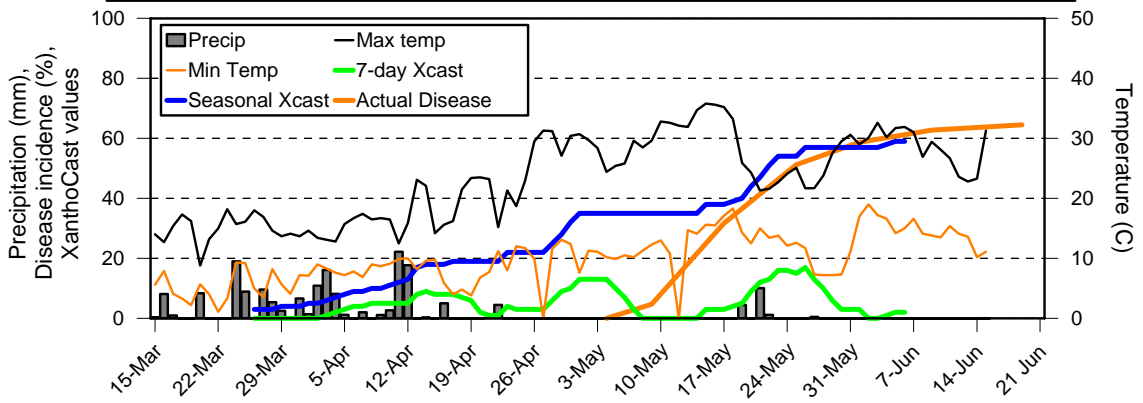


Fig. 8. Weather conditions, XanthoCast values, and disease incidence
 - Trial at Cana Highway, Tehama Co., 2006 -

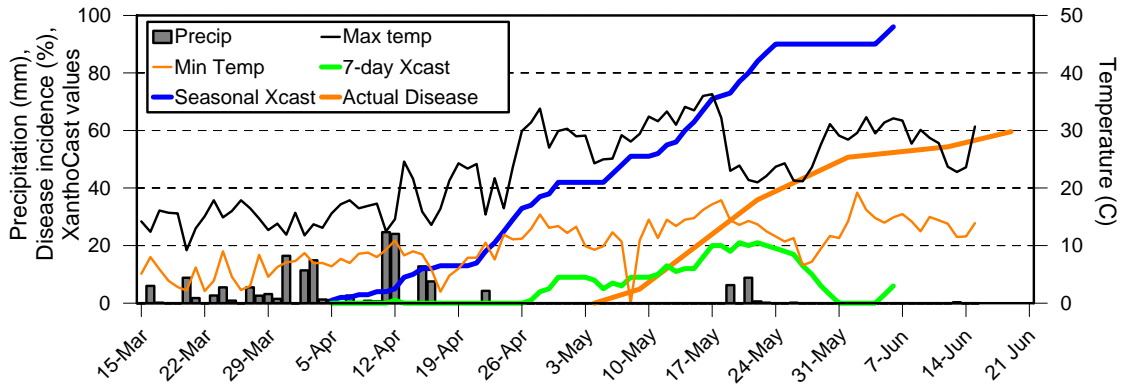
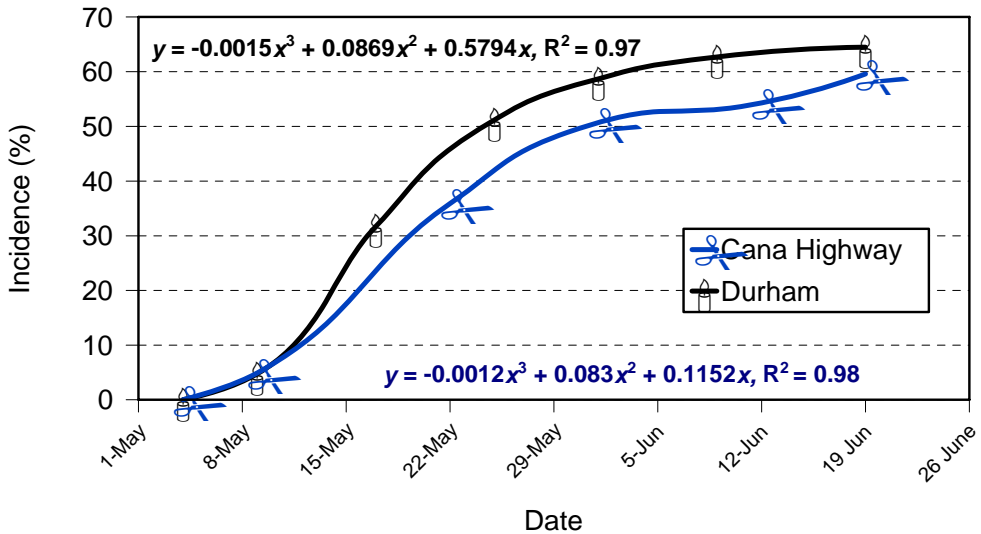
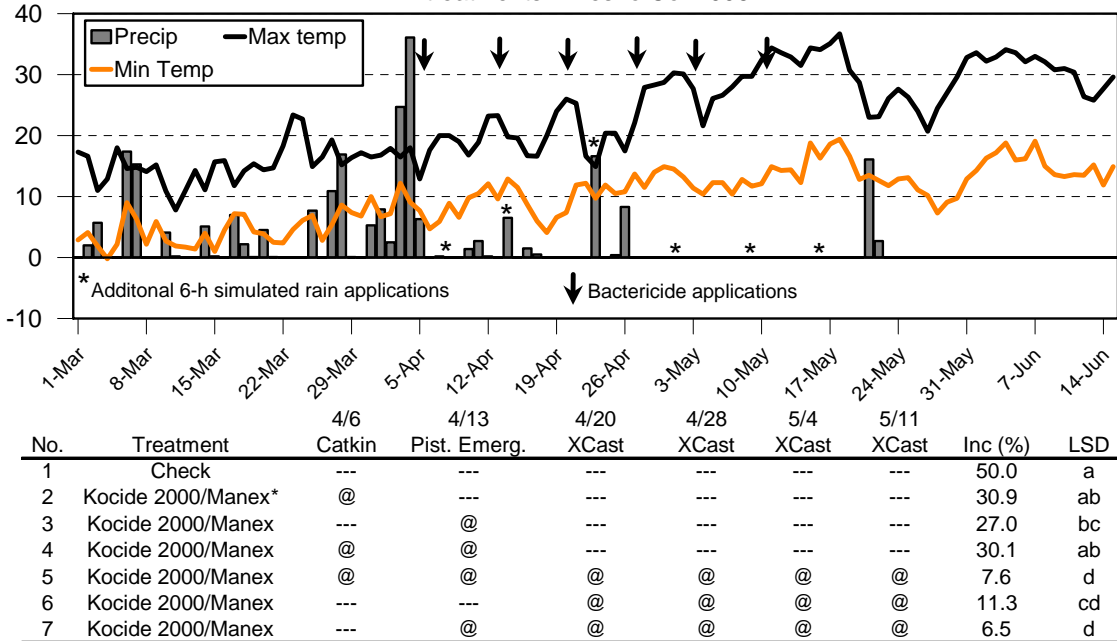


Fig. 9. Disease Progress Curves for the Butte and Tehama Co. trial locations 2006



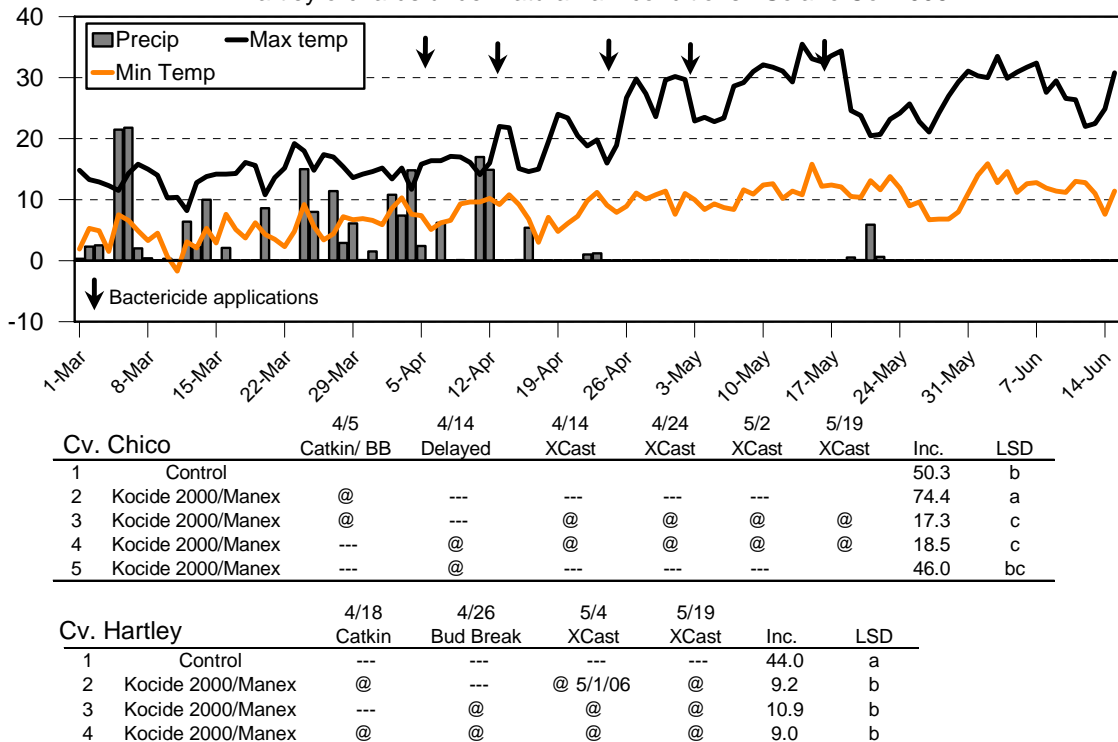
The data was modeled using a third order polynomial.

Fig. 10. Timing study with Kocide-Manex treatments in a cv. Vina orchard with simulated rain treatments - Fresno Co. 2006



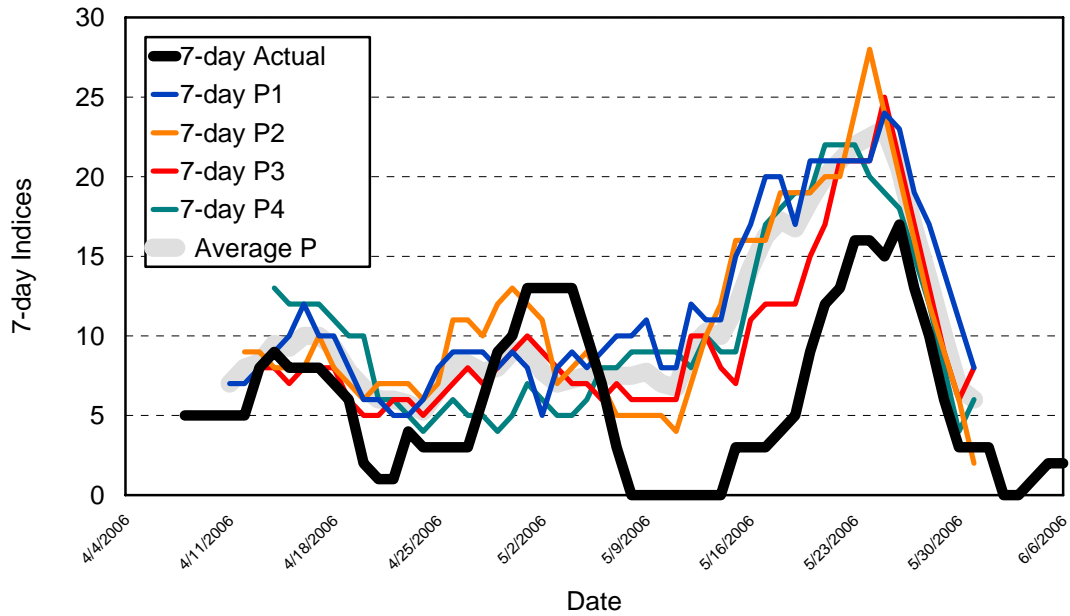
Kocide 2000/Manex was applied at a rate of 6 lb/58 fl oz/100 gal and 2 gal/tree using an airblast sprayer.

Fig. 11. Timing study with Kocide-Manex treatments in cv. Chico and Hartley orchards under natural rain conditions - Solano Co. 2006



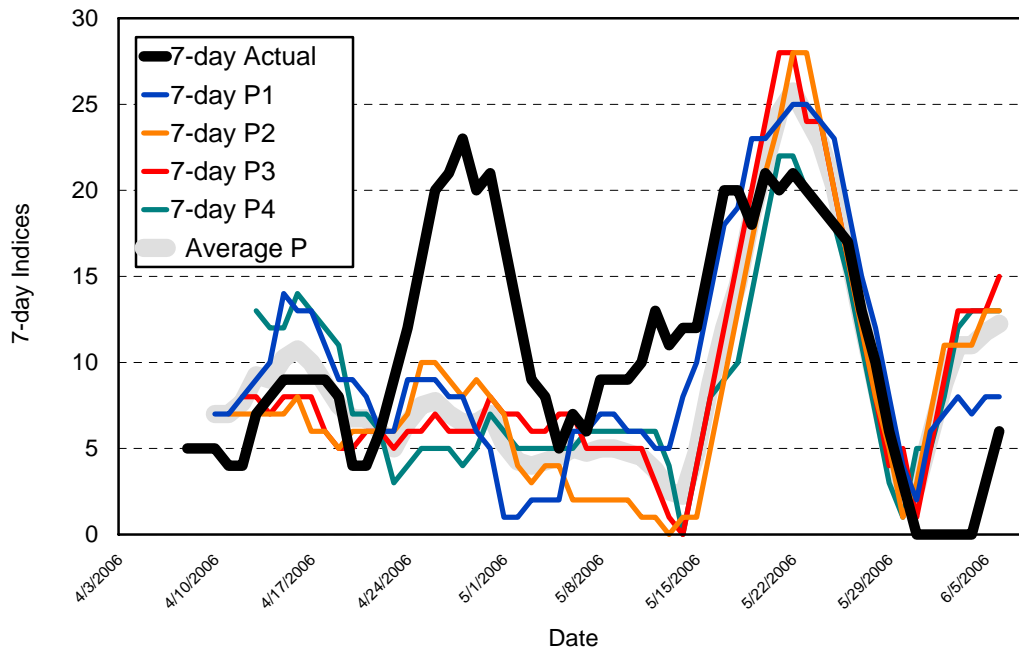
Kocide 2000/Manex was applied at a rate of 6 lb/58 fl oz/100 gal using an airblast sprayer.

Fig. 12. Actual and automated predicted XanthoCast 7-day indices
 - Durham -



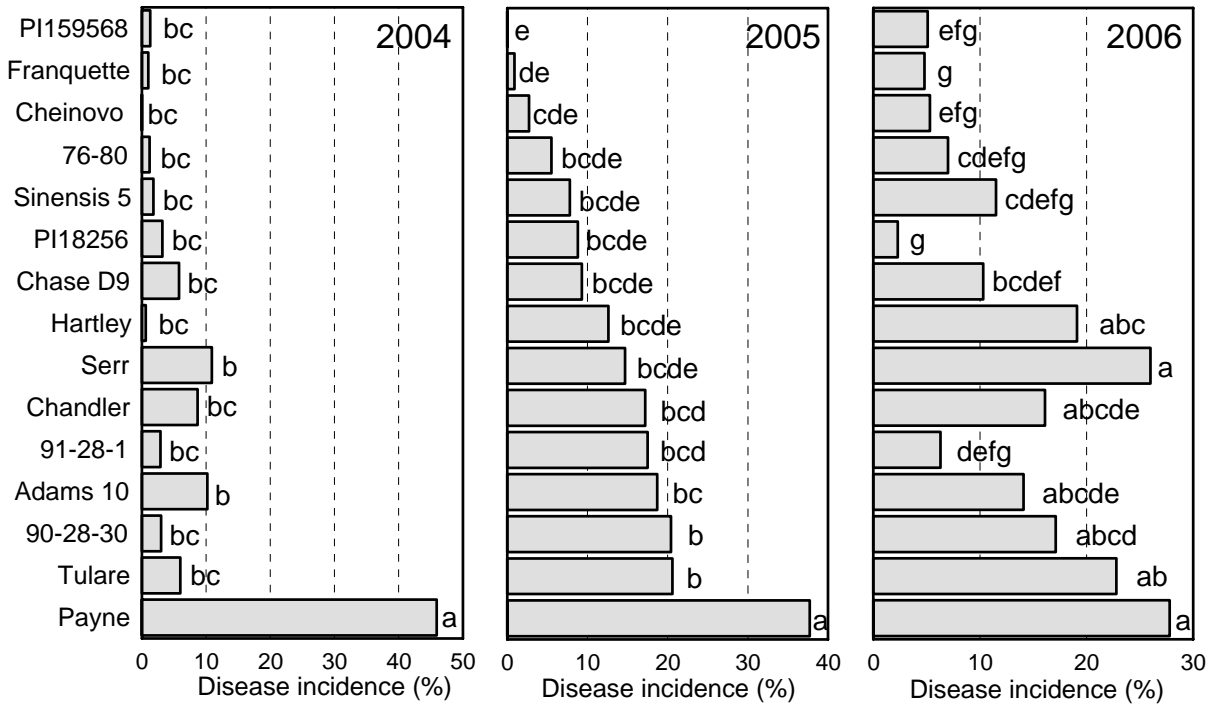
Forecasted values are based on Fox Weather and Irrigate.net agricultural telemetry network data for 1-day predicted (P1), 2-day predicted (P2), 3-day predicted (P3), and 4-day predicted (P4) values. Average predicted (P) shows the overall trend with a correlation of 0.49.

Fig. 13. Actual and automated predicted XanthoCast 7-day indices
 - E. Cana Hwy -



Forecasted values are based on Fox Weather and Irrigate.net agricultural telemetry network data for 1-day predicted (P1), 2-day predicted (P2), 3-day predicted (P3), and 4-day predicted (P4) values. Average predicted (P) shows the overall trend with a correlation of 0.48.

Fig. 14. Walnut variety susceptibility to blight in a simulated rain-treated orchard - Fresno Co. 2004-2006 -



Six weekly simulated rain events were applied using a high-angle sprinkler system.