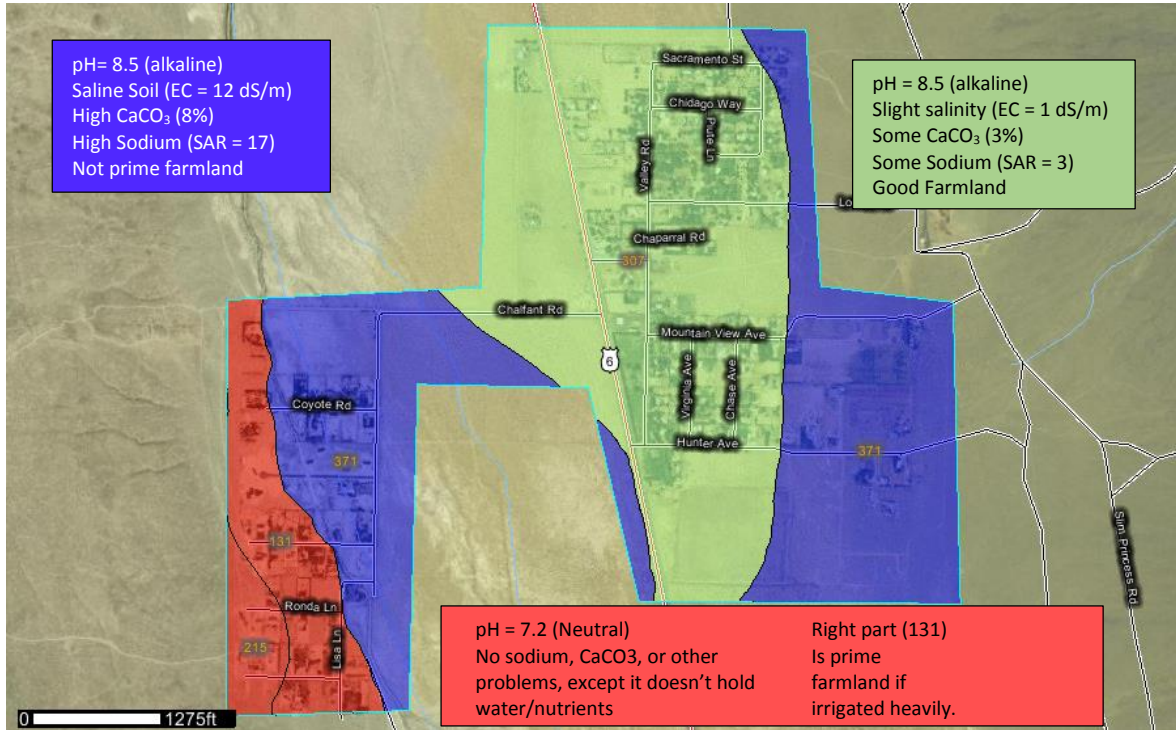


Chalfant Community Soils



Map symbol and soil name	Depth	Sand	Silt	Clay	Moist bulk density	Saturated hydraulic conductivity	Available water capacity
	<i>In</i>	<i>Pct</i>	<i>Pct</i>	<i>Pct</i>	<i>g/cc</i>	<i>micro m/sec</i>	<i>In/In</i>
131—Blindspring gravelly loamy sand, dry, 0 to 5 percent slopes							
	0-1	-81-	-17-	- 2-	1.30-1.45	42.34-141.14	0.08-0.11
	1-3	-81-	-17-	- 2-	1.30-1.45	42.34-141.14	0.08-0.11
	3-60	-81-	-17-	- 2-	1.30-1.45	42.34-141.14	0.08-0.12
215—Honova loamy coarse sand, 9 to 30 percent slopes							
	0-3	-82-	-11-	5- 8- 10	1.45-1.65	42.34-141.14	0.08-0.12
	3-9	-67-	-23-	5-10- 15	1.35-1.55	14.11-42.34	0.20-0.26
	9-13	—	—	—	—	—	—
307—Seaman sandy loam, 0 to 2 percent slopes							
	0-7	-67-	-20-	8-13- 18	1.60-1.70	14.11-42.34	0.10-0.13
	7-60	-67-	-20-	8-13- 18	1.60-1.70	14.11-42.34	0.10-0.13
371—Yaney-Yaney loam association, 0 to 2 percent slopes							
Yaney – Sandy	0-10	-94-	- 1-	0- 5- 10	1.40-1.50	14.11-42.34	0.03-0.06
	10-42	-66-	-23-	8-11- 14	1.30-1.40	4.23-14.11	0.01-0.08
	42-54	-64-	-27-	8-10- 12	1.30-1.40	4.23-14.11	0.01-0.08
	54-60	-83-	-10-	2- 8- 14	1.35-1.50	42.34-141.14	0.01-0.07
Yaney - Loamy	0-10	-46-	-44-	6-10- 14	1.25-1.35	1.41-4.23	0.08-0.14
	10-42	-66-	-23-	8-11- 14	1.30-1.40	4.23-14.11	0.01-0.08
	42-54	-64-	-27-	8-10- 12	1.30-1.40	4.23-14.11	0.01-0.08
	54-60	-83-	-10-	2- 8- 14	1.35-1.50	42.34-141.14	0.01-0.07

These soils have virtually no organic matter content.