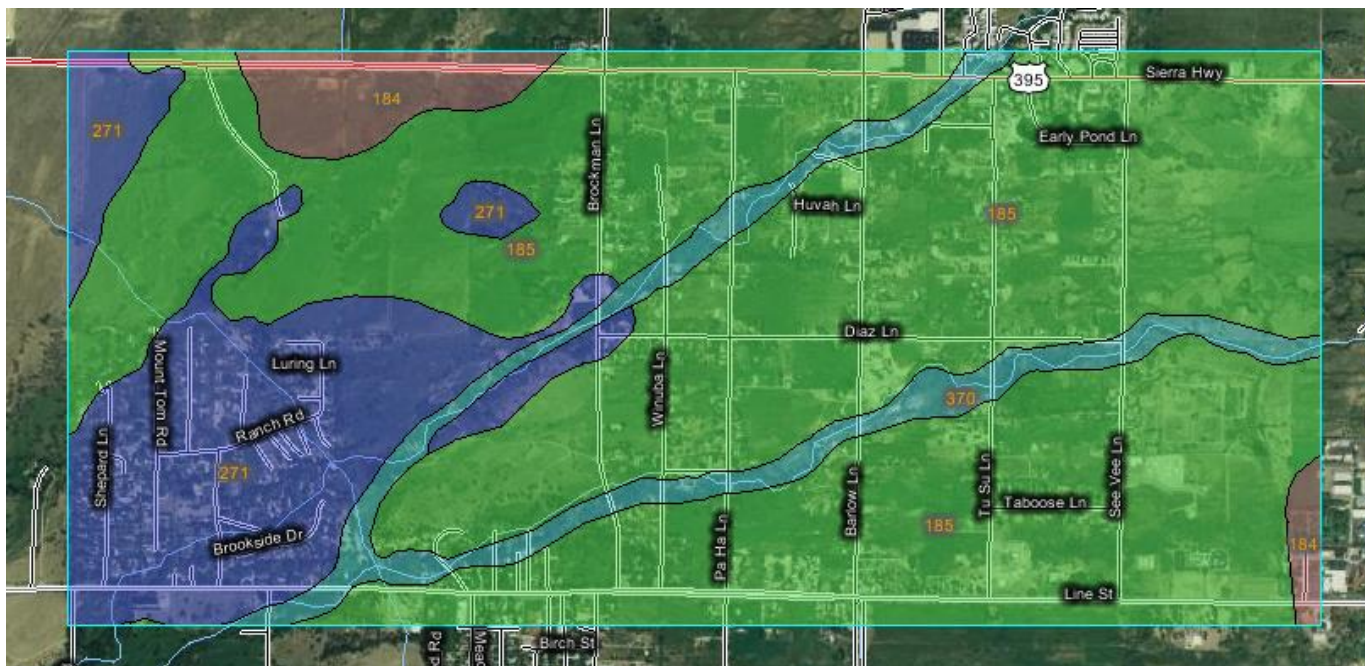


# Soils of West Bishop, Between Hwys. 395 and 168



## Key

184-Dehy Loam	185-Dehy Sandy Loam	271-Muranch Sandy Loam (Cobbly)	370-Drainageways (Xerofluvents)
---------------	---------------------	---------------------------------	---------------------------------

## Soil Properties

Series	pH	Saline?	CaCO <sub>3</sub> %	Drainage	Color	Notes
<b>Dehy</b>	6.2-6.8	No	0	Some-what Poor	Dark gray, touch of brown	Can get crusty and hydrophobic if left too dry. Easily compacted when wet. High water table. 4-5% Organic matter. Most common Bishop soil type.
<b>Muranch</b>	6.7	No	0	Good	Grayish brown	Prime farmland if irrigated. Easily wind eroded.
<b>Drainage-ways</b>	7.6	No	0	Poor	Dark gray or brown	Poor farmland. Not suitable for crops due to boulders, stones, and gravel. Consider raised beds if you have land in this type.