

# **San Luis Obispo County Pesticide Use Enforcement Program Update**

Janice Campbell, Deputy Ag. Commissioner

---

Annual Central Coast  
Caneberry Grower Meeting  
January 28, 2014

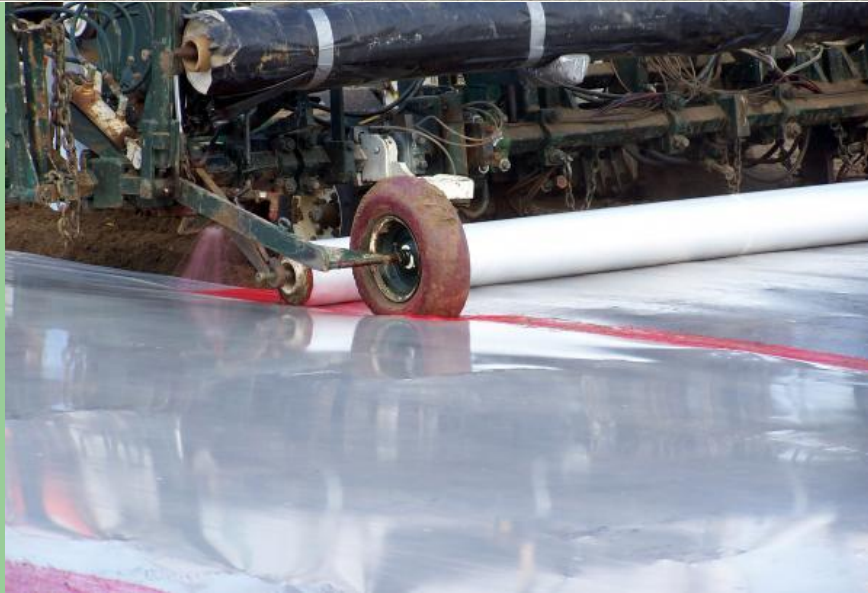
# Topics

- Fumigant Use Trends & Requirements
- Pesticide Use Reporting Reminders
- Ground Squirrel Control Workshop

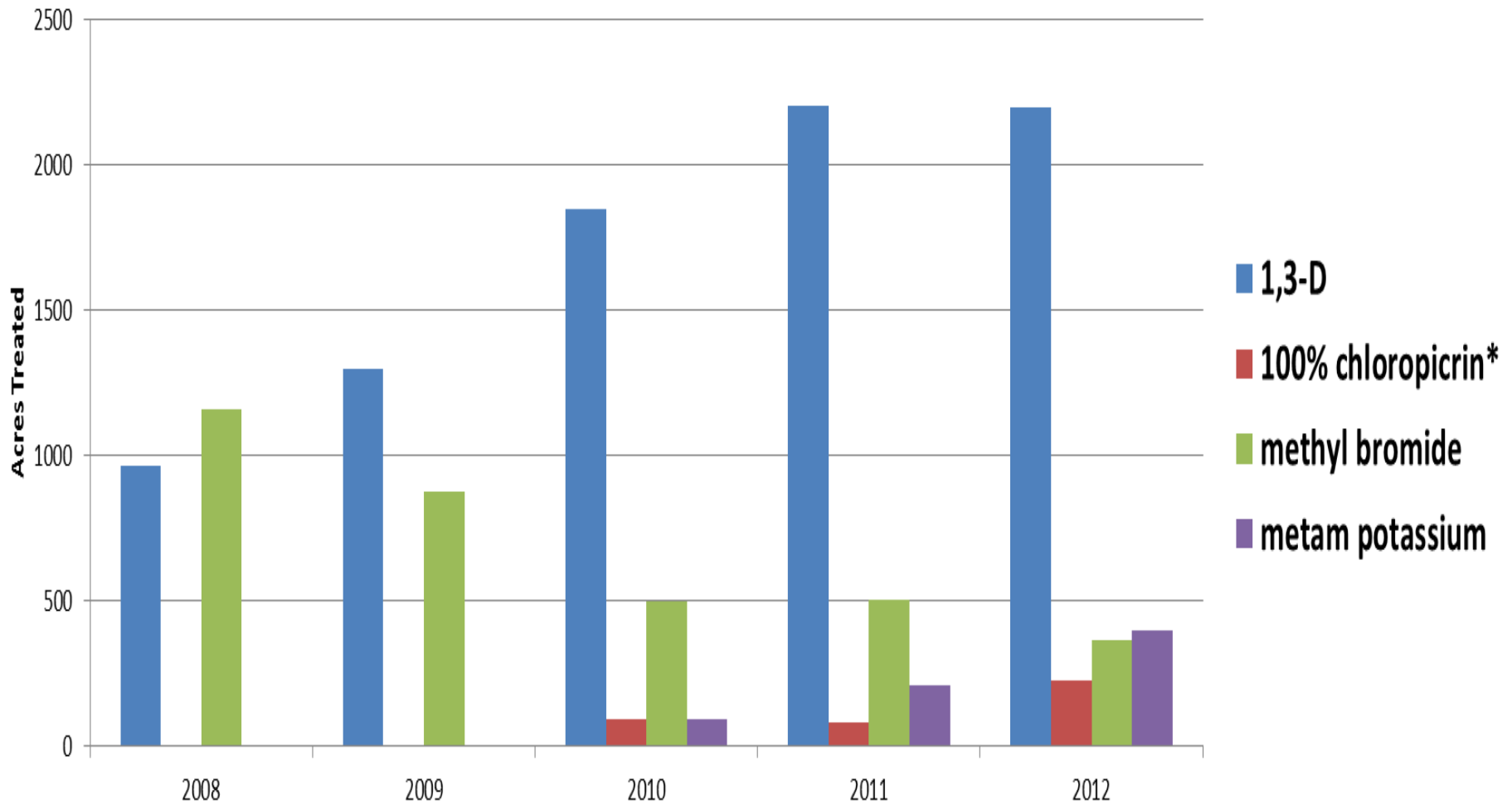
# Drip Chemigation



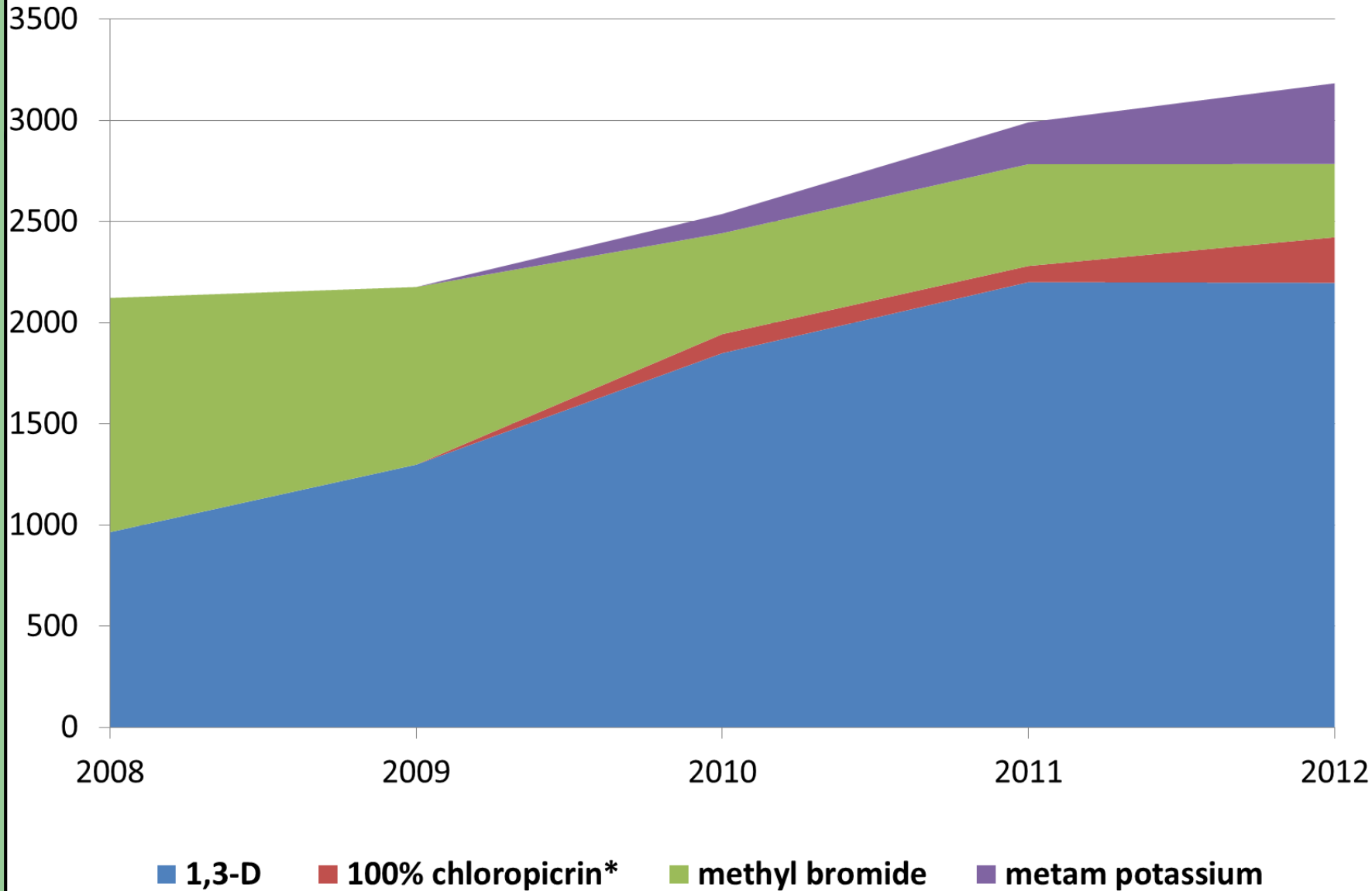
# Flat Fumigation



# San Luis Obispo County Fumigant Acres Treated by Year Pre-Plant for Strawberries



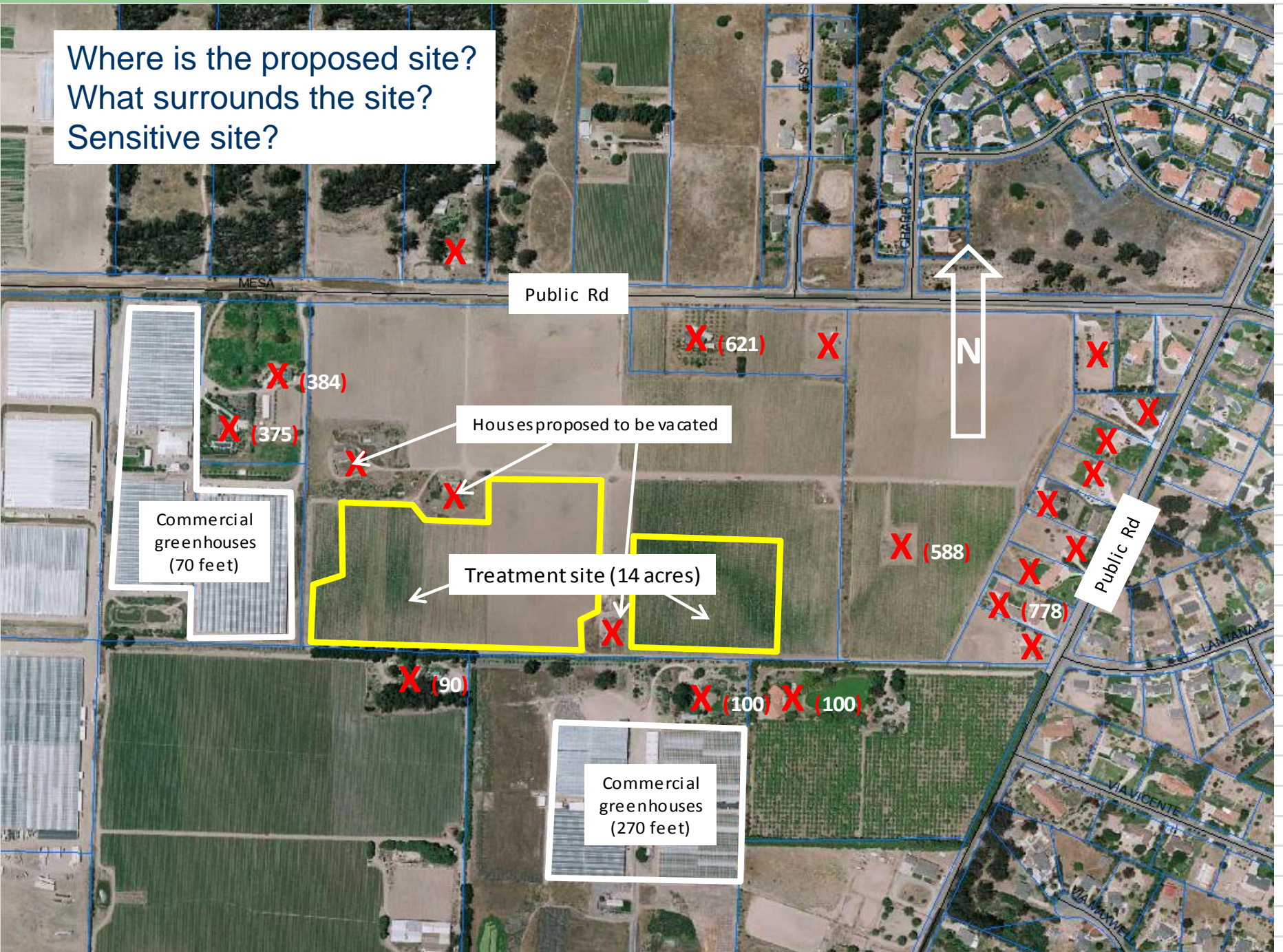
# San Luis Obispo County Fumigant Use Trends on Strawberries (Acreage Treated by Year)



# County Comparison of Permit Conditions

- San Luis Obispo and Santa Barbara
  - Very similar
  - Even playing field
- Site Evaluation
  - Permit conditions are site specific
  - Additional restrictions may be required

Where is the proposed site?  
What surrounds the site?  
Sensitive site?



Public Rd



Houses proposed to be vacated

Commercial greenhouses  
(70 feet)

Treatment site (14 acres)

Public Rd

Commercial greenhouses  
(270 feet)



# Buffer zone distance

- Distances vary based on
  - Fumigant used
  - Rate of application
  - Method of application
  - Area treated
  - Tarp type
  - Buffer zone credits applied
- Compare the product label and minimum allowed by permit

# Determining minimum buffer zone

- Fumigant product label
  - Consult specific label tables
  - Minimum buffer 25 ft
  - Range 25-1990 (depends on multiple variables)
- DPR recommended permit conditions
  - Dependent on tarp type and area treated
  - Minimum with TIF 25 ft
  - Minimum with standard tarp:
    - 60 ft (6 or less acres) or 100 ft (over 6 to 40 acres)

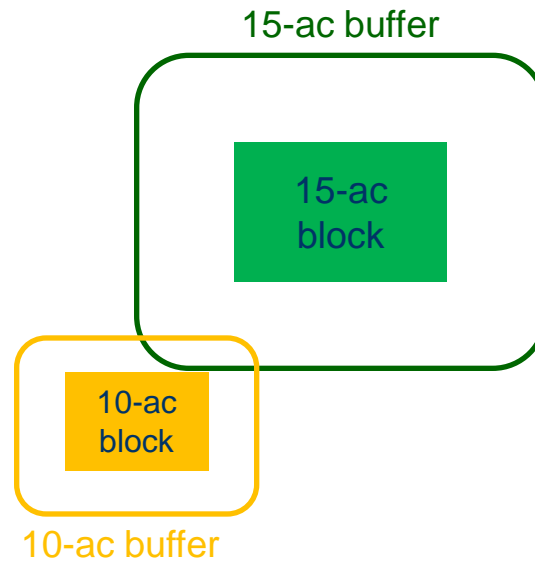
# Tarp requirements

- SLO and SB permit conditions require
  - TIF 60% tarp for all 100% Chloropicrin jobs
  - TIF 60% tarp may be required at
    - Sensitive sites with high concentration chloropicrin products
      - Such as Pic Chlor 60 and Pic Chlor 60 EC

# Tarp perforation

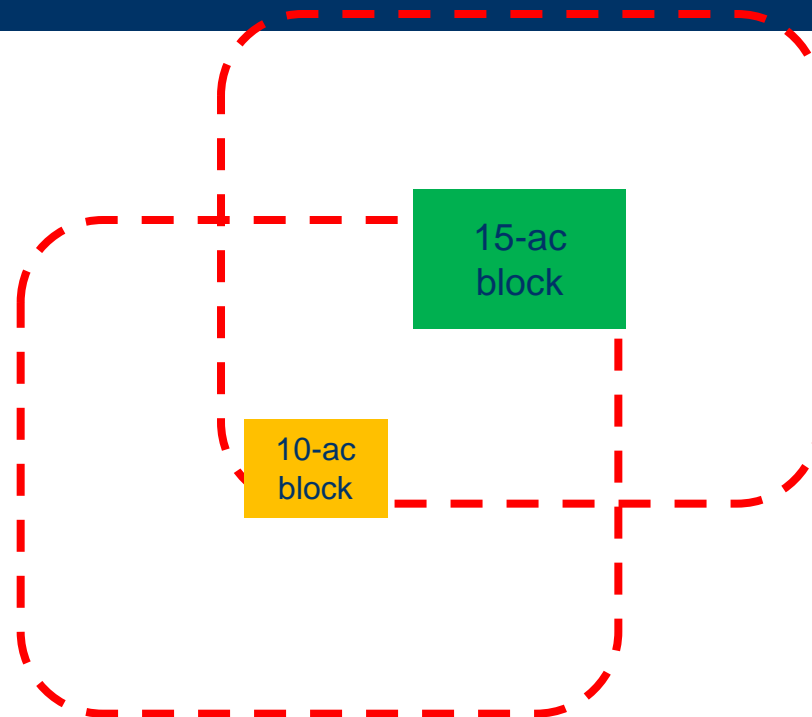
- Phase 2 fumigant labels
  - Perforation allowed 5 days after treatment
- DPR recommended permit conditions
  - Perforation of any tarp that US EPA has rated for buffer zone reduction shall not be cut for a minimum of 9 days after treatment
- SLO and SB permit conditions require
  - 9 days for all US EPA qualifying tarps

# Overlapping buffer zones



Buffers overlap – so the combined acreage must be used to determine buffer size

# Overlapping buffer zones



Combined acreage of 25 acres requires larger buffers

# Keep Non-handlers Out

- Treated area - minimum of 5 to 14 days
  - Depends on when the tarp will be removed and/or perforated
- Buffer zone duration - 48 hours
- Non-handlers:
  - Bystanders at bus stops
  - Pedestrians, joggers
  - Field harvesting crews
  - Lunch truck personnel

# Posting requirements

- Phase 2 fumigant labels
  - Post warning signs
  - Treated area and buffer zone
  - Entry restricted period and BZ duration
- SLO and SB permit conditions require
  - Post buffer zone perimeter every 200 ft
  - Exception may be allowed



# Transit areas within the buffer zone

- Who may transit on public roads?
  - Vehicles
  - Bicycles
  - **Pedestrians are not allowed**
- How will you keep people out of the buffer zone for 48 hours?
- Ag Commissioner may require extra precautions around transit areas or exclude transit areas from the buffer zone

# Emergency Preparedness

- Neighbor notification and field monitoring may be required by permit condition at sensitive sites

# Fumigant Questions

- Call your Inspector/Biologist
- Make your appointment soon

# Pesticide Use Reporting Reminder

- Production Agriculture Monthly Summary
  - Snail bait
  - Rodenticides
  - Herbicides

# Ground Squirrel Control Workshop

- Free Workshop
- Hosted by UCCE and SLO Ag. Commissioner's Office
- March 26, 2014
- Register by March 14
  - [http://ucanr.edu/groundsquirrels 2014](http://ucanr.edu/groundsquirrels2014)
  - Ingrid @ (805) 781-5940

# For more information

- Call the County Agricultural Commissioner's Office nearest you
  - Templeton (805) 434-5950
  - San Luis Obispo (805) 781-5910
  - Arroyo Grande (805) 473-7090
  - Santa Maria (805) 934-6200
  - Santa Barbara (805) 681-5600
- [www.cdpr.ca.gov](http://www.cdpr.ca.gov)
- [www.slocounty.ca.gov/agcomm](http://www.slocounty.ca.gov/agcomm)
- [www.countyofsb.org/agcomm](http://www.countyofsb.org/agcomm)