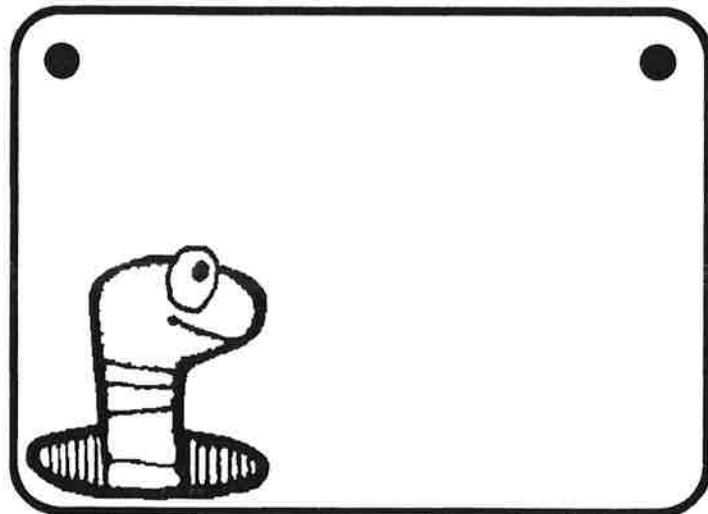
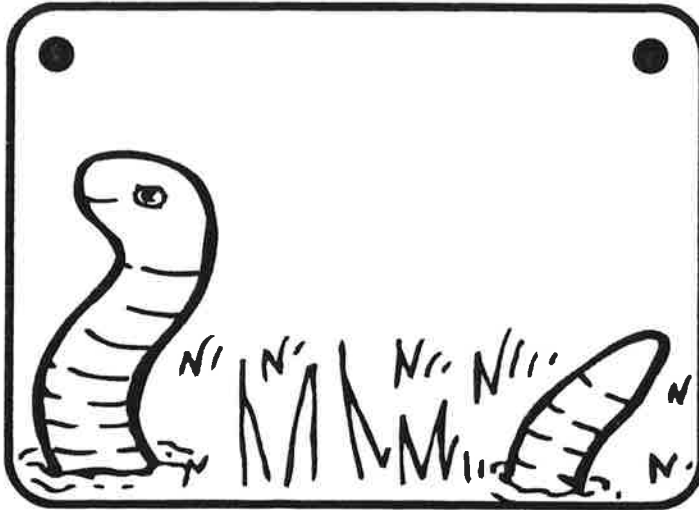


WORM NAME TAG PATTERNS

Punch Holes and String Yarn



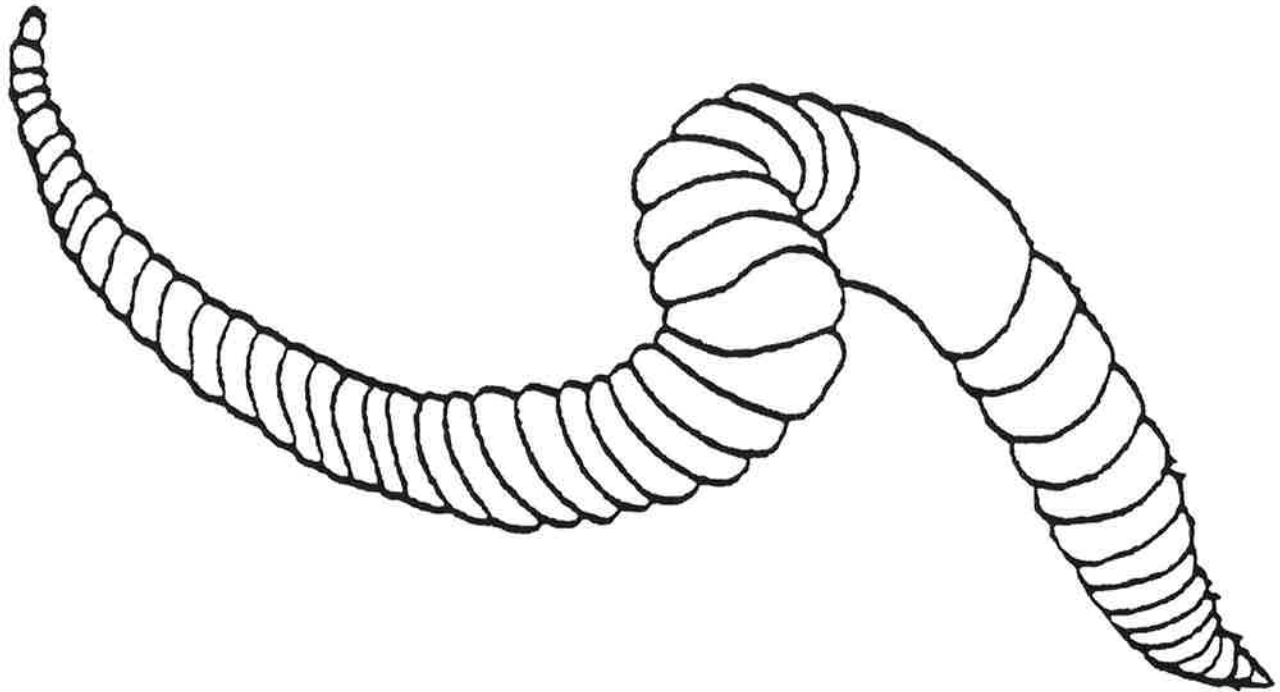
SAMPLE SENSES CUTOUTS



WORM BODY SHEET

DIRECTIONS:

Cut out the ***Worm Body Parts*** below and glue them on the correct place on the worm.



head

segments

saddle
(clitellum)

mouth

tail

COMPARISON CHART

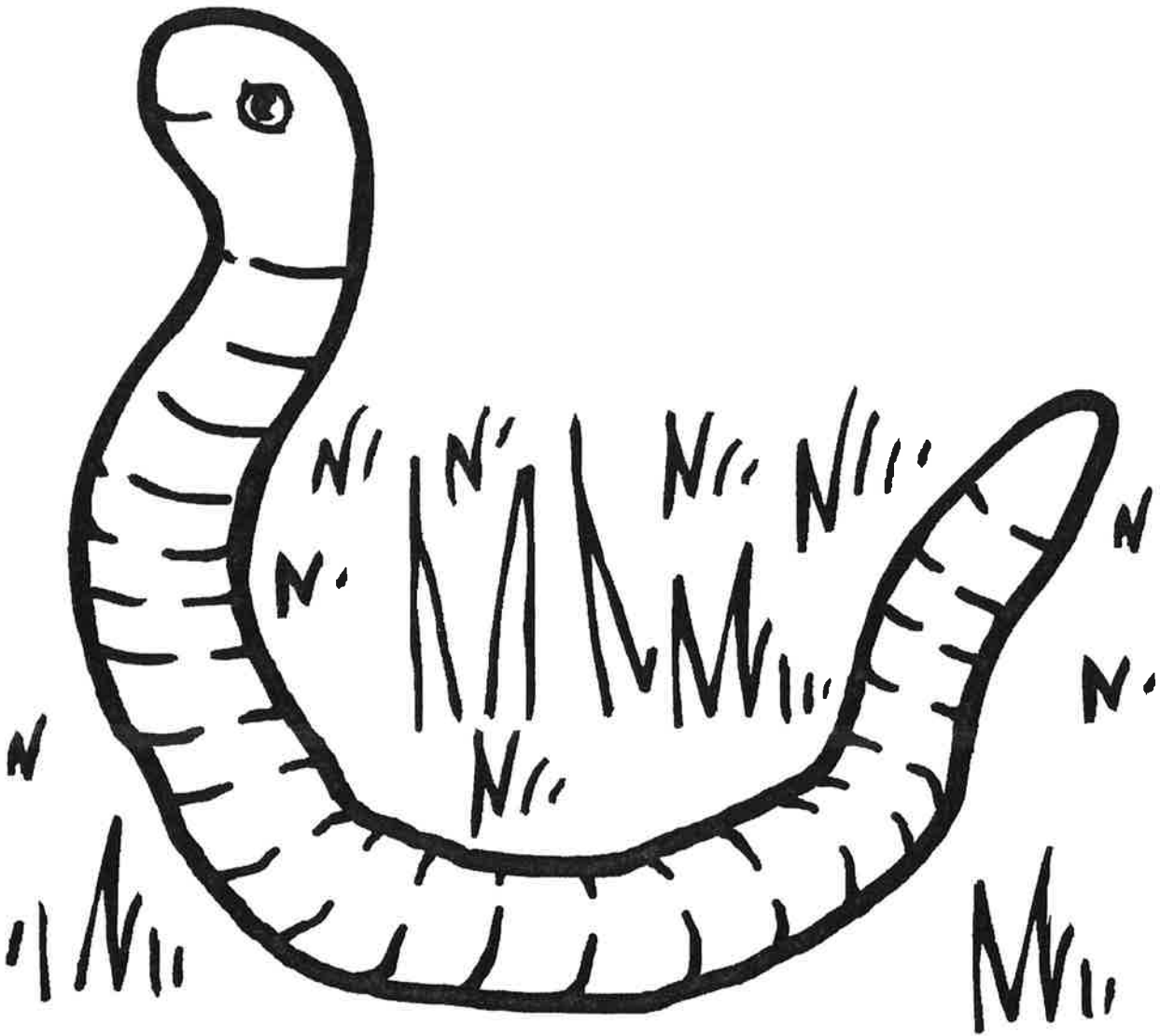
Compare the Body Parts of People and Worms

| People | Worms |
|--------|-------|
| 1 | 1 |
| 2 | 2 |
| 3 | 3 |
| 4 | 4 |
| 5 | 5 |

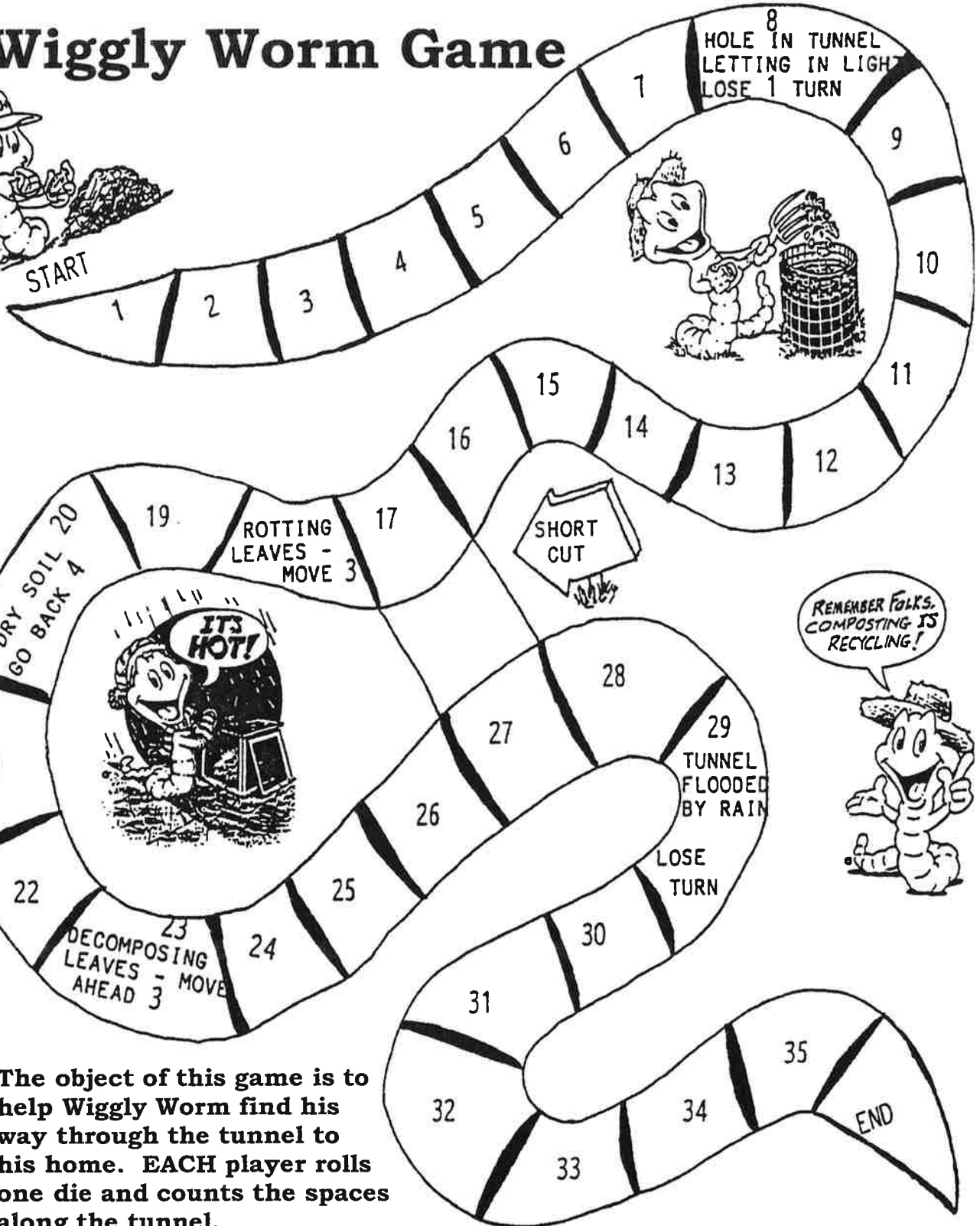
WORM STICK PUPPET

DIRECTIONS:

1. Color the worm.
2. Cut out along the dark lines.
3. Tape or glue a popsicle stick on the back of the puppet.
4. Use the stick to make the worm wiggle.

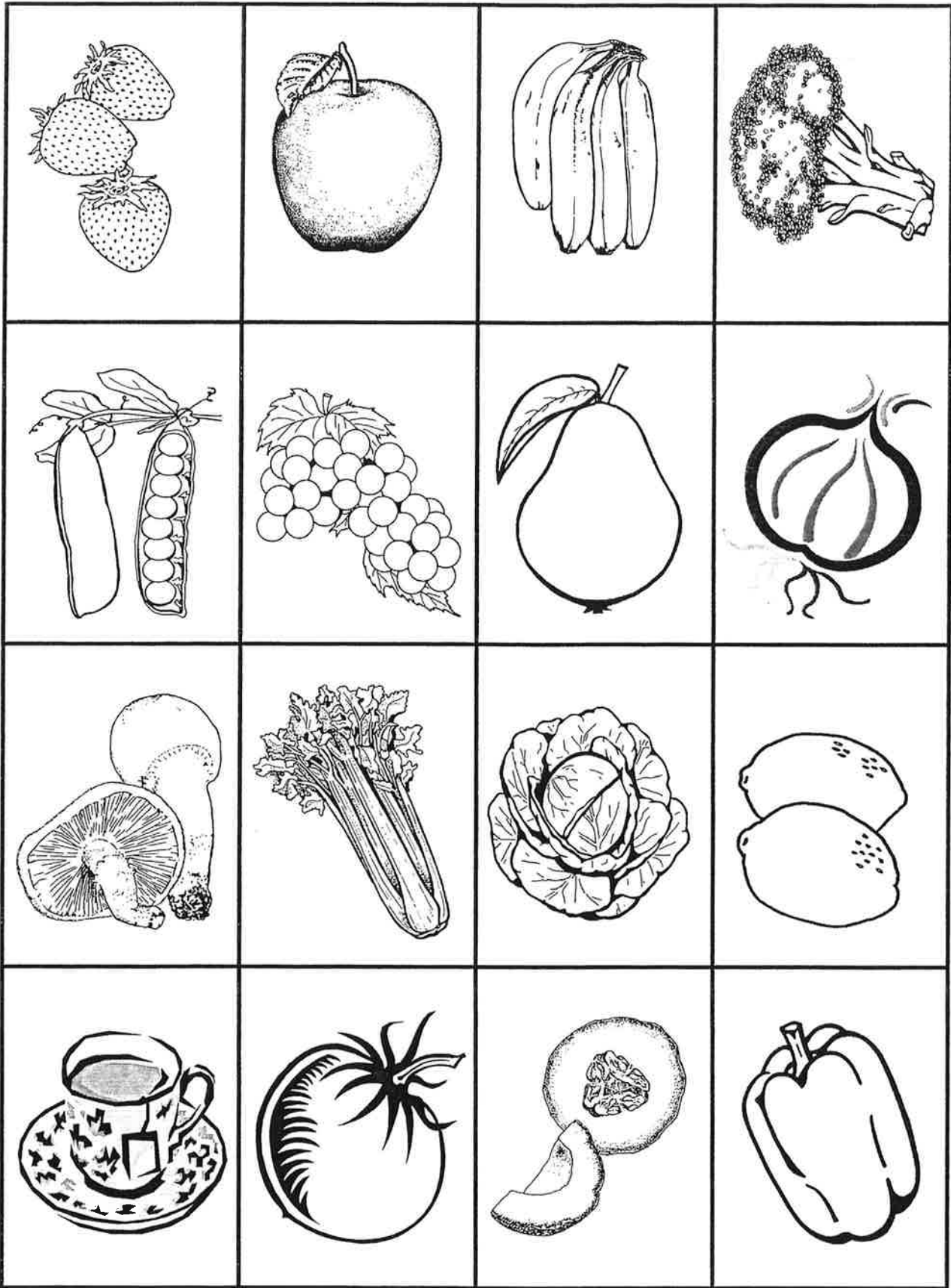


Wiggly Worm Game



The object of this game is to help Wiggly Worm find his way through the tunnel to his home. EACH player rolls one die and counts the spaces along the tunnel.

Redworm Concentration Cards



WORMSERVATION CHART

| Predictions | Observations |
|-------------|--------------|
| 1 | 1 |
| 2 | 2 |
| 3 | 3 |
| 4 | 4 |
| 5 | 5 |
| 6 | 6 |
| 7 | 7 |
| 8 | 8 |
| 9 | 9 |
| 10 | 10 |

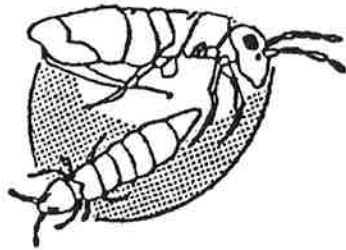
WORM BIN DETECTIVE CARDS



Centipede



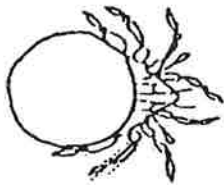
Millipede



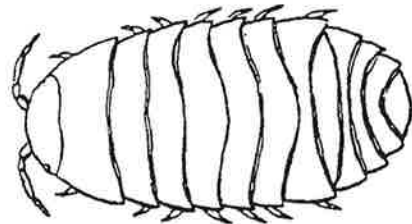
Springtail



Beetle



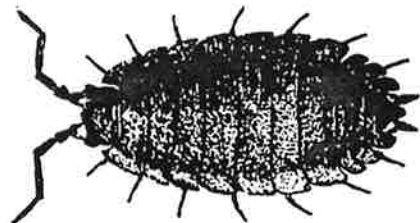
Mite



Pill Bug



Ant



Sow Bug

Millipede

My name means “one thousand legs,” but I really don’t have that many. See how many legs you can count. I am reddish in color and usually 1 to 3 inches long. I am a vegetarian.

Centipede

I am an enemy of earthworms. I hunt and eat them. I move quickly on my many legs.

Beetle

I am a hunter. I am shiny black with a tough shell and wings. I hunt mostly at night. I eat slugs and snails.

Springtail

I am white and very tiny. I get my name because I jump into the air when I am disturbed. I eat mold and decaying material.

Pill bug or Roly-Poly

I am grayish in color and about 2” long. I eat vegetation and decaying materials. If I am frightened, I can roll up myself in a ball.

Mite

I am very tiny. I am very round and flat. I have eight legs but they are hard to see. I can sometimes be harmful to earthworms.

Sow Bug

I like damp, moist places like worm bins. I don’t eat worms. I eat decaying vegetation. I am about 2” long. I’m related to the roly-poly but I can’t roll up.

Ant

I am an insect with six legs. Many people think I am a pest, but I help compost materials by digging tunnels and breaking down materials.

WORM BIN GAME BOARD

