

SAN LUIS OBISPO COUNTY SHEEP LEVEL TESTING

LEVEL 1

PASSING SCORE FOR LEVEL 1 IS 70%

This test will include identifying body parts, true/false questions, and multiple choice and fill in the blank. The following body parts chart is the one that will be used and all other questions will come from the 4-H Cooperative Curriculum System - "Rams, Lambs & You", the sheep project 1 activity book.

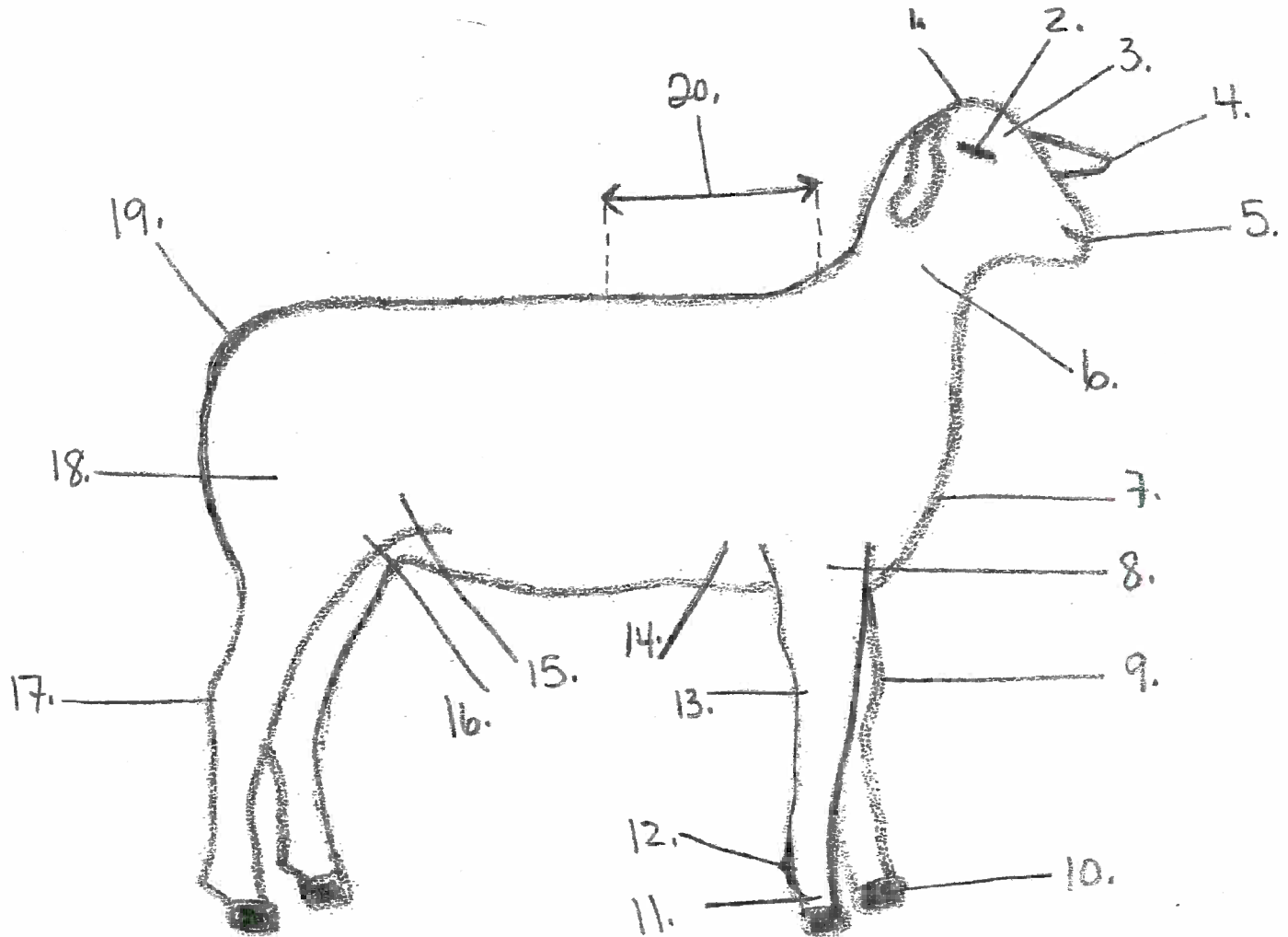
Please read the book, (you do not need to do any of the activities to be able to pass the test) spend a good amount of time on the glossary, there will be about 15 terms from there, study the parts chart below. There will be 4 breeds to identify from the list on page 8 by their appearance.

Good luck. See you at level testing day.

Sheep Body Parts

Please identify the parts of the market lamb.

Place the number on the line beside the word that most describes the body part.



20 Back/Rack

3 Forehead

7 Breast or brisket

17 Hock

12 Dewclaw

10 Hoof

4 Ear

9 Knee

2 Eye

18 Leg of lamb

8 Forearm

5 Mouth

14 Foreflank

6 Neck

11 Pastern

1 Poll

16 Rear flank

13 Shank

15 Stifle

19 Tail