

Lake Tahoe Basin Invasive Weed Coordinating Group

2010 Annual Report and Newsletter



Dedicated to preventing and controlling invasive weed species in the Tahoe Basin by sharing resources and information.

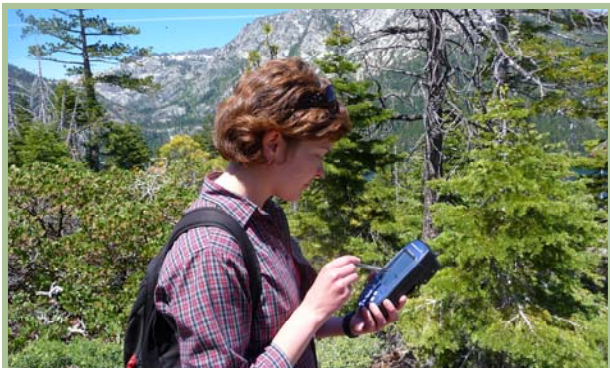
Project Highlight

Flammable Invasive Weeds Surveyed

Deforestation and erosion due to wildfire are major concerns to land managers and community members in the Tahoe Basin concerned with preserving Lake Tahoe's famous clarity. Additionally, the threat of wildfire to private, public and commercial properties could be elevated if a vegetation component of flammable invasive weeds were to establish itself in the Basin. In 2010, the LTBWCG supported the work of Tahoe Resource Conservation District (Tahoe RCD) to map three invasive weed species that pose a fire risk: medusahead (*Taeniatherum caput-medusae*), cheatgrass (*Bromus tectorum*) and broom (*Cytisus*) species. An educational handout "Flammable Invasive Weeds" was produced to assist with educational work. It should be noted that both cheatgrass and Broom species have been historically found in the Tahoe Basin; medusahead has yet to be documented in this area.

The focus of the surveys were "high priority" sites— areas within the Tahoe Basin that have been deemed at risk of invasion (e.g. meadows) and locations at the urban/wildland interface. In 2010 this study was limited to the South Shore region of the Tahoe Basin, with plans to expand Basin wide in the future. Mapping in the area affected by the 2007 Angora Fire was also of high priority to this study.

Surveys show burgeoning infestations of cheatgrass in urban and disturbed areas. Roadways, especially high traffic thoroughfares, showed the highest levels of *Bromus* infestation. Two of the six meadows surveyed showed a high level of infestation (20+ infestations greater than 20 ft²). In these areas, cheatgrass had often displaced the native forbs and grass species, especially in areas where the soil had been disturbed. The surveys found no populations of Medusahead (*Taeniatherum caput-medusae*) in any of our study sites. Incidences of Broom species (*Cytisus*) were localized and often restricted to residential sites.



Tahoe-Baikal Institute participant mapping flammable species



Young volunteer helps remove bull thistle and Eurasian watermilfoil from the Upper Truckee River

2010 Highlights

Detection and Mapping

- Detection surveys were completed on **5,518 acres** of public and private lands and **746 sites** were monitored.

Control and Eradication

- **374 net acres** were treated with mechanical and chemical control

Education & Outreach

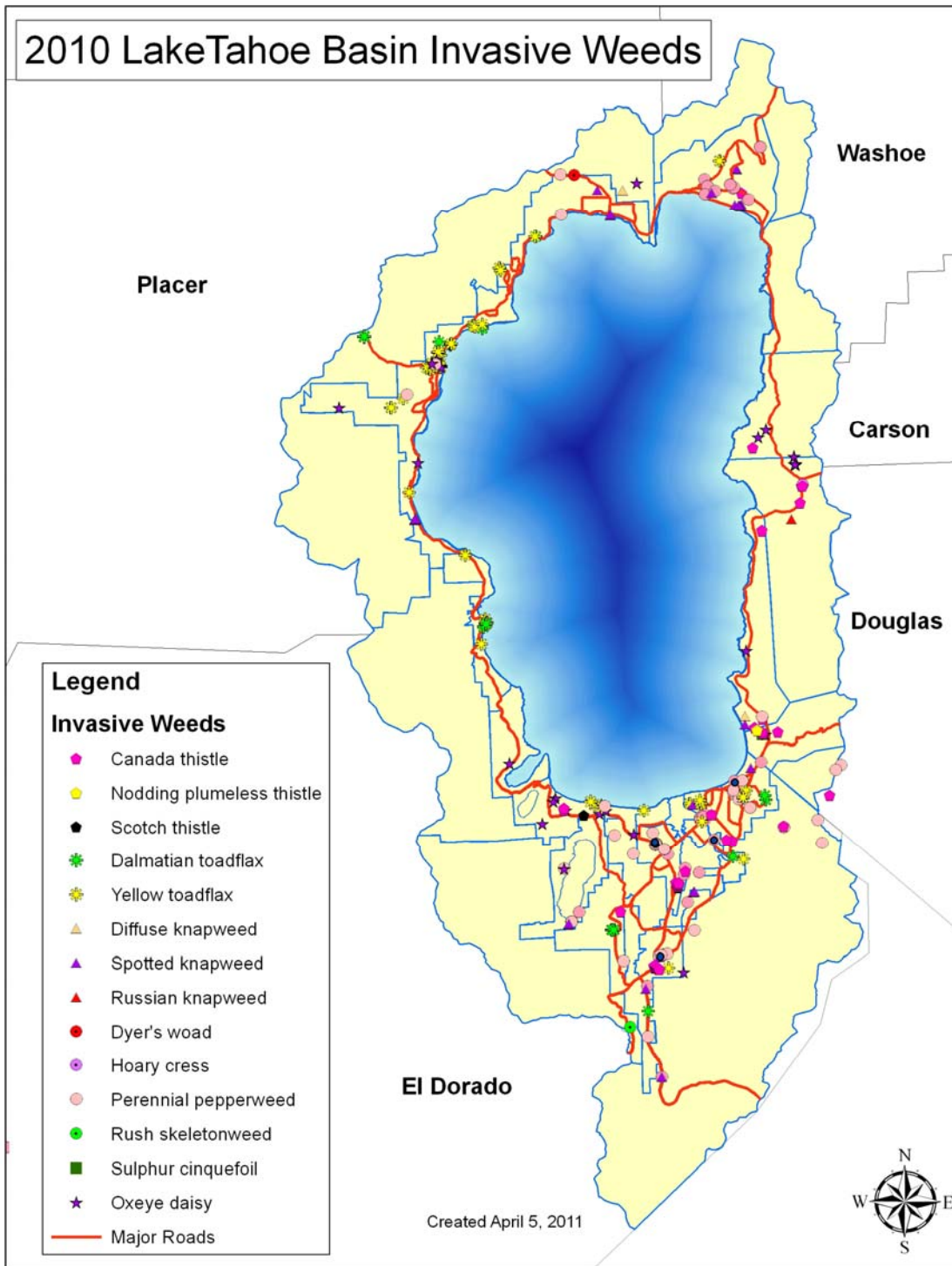
- **6,500+ people** were reached via trainings, radio, presentations, events, newspaper, television and workshops.
- **260 homeowners** received on-site consultations to detect and control invasive plants.

Check Out Our Website!

Visit our website to report invasive weed sightings, get involved and learn about our priority weeds

TahoInvasiveWeeds.org

2010 LakeTahoe Basin Invasive Weeds



Our Mission

Collectively, the Lake Tahoe Basin Weed Coordinating Group (LTBWCG) group is dedicated to ensuring that invasive weed detection, control and education is effective and seamless across the five county, bi-state region.

Since the LTBWCG inception in 2002, the group has annually prepared an action plan with specific actions and responsibilities relating to four areas of our collaborative work:

- detection and inventory of new and historical infestations,
- treatment and eradication of know sites,
- restoration as needed,
- and education and outreach.

The Lake Tahoe Basin is in the relatively early stages of invasion by weeds. The LTBWCG focuses on a technique called "early detection, rapid response" to find and eradicate plants before they become huge and expensive problems.

Upcoming Events

- * April 23rd: Tahoe Truckee Earth Day, at Squaw Valley Ski Resort, Visit: TahoeTruckeeEarthday.com
- * May (Dates to be determined): Tahoe Green Landscaper Workshop Series (in Spanish) Visit: TahoeRCD.org
- * June 30th:: Fanny Bridge Weed Pull, at Gatekeeper's Museum, Visit: TahoeRCD.org



LAKE TAHOE BASIN
WEED COORDINATING GROUP

Lake Tahoe Basin Invasive Weed Coordinating Group Partners:

California Dept. of Food and Agriculture, California State Parks, California Tahoe Conservancy, California State Lands Commission, Caltrans, Douglas County Weed District, El Dorado County Agriculture Department, Lahontan Regional Water Quality Control Board, Lake Tahoe Environmental Education Coalition, Natural Resources Conservation Service, Nevada Tahoe Conservation District, Nevada/Placer County Agriculture Dept., Nevada Department of Agriculture, Tahoe Regional Planning Agency, Tahoe Resource Conservation District, University of California Cooperative Extension, University of Nevada Cooperative Extension, US Forest Service-Lake Tahoe Basin Management Unit, Washoe Tribe of Nevada and California and Nevada State Parks.